

Part No. P0991509 05

# **CallPilot Mini/150**

## **Desktop Messaging Installation and Maintenance Guide**

**NORTEL**  
**NETWORKS™**

# CallPilot Mini/150 Desktop Messaging Installation and Maintenance Guide

**Copyright © 2003 Nortel Networks**

All rights reserved. 2003.

The information in this document is subject to change without notice. The statements, configurations, technical data, and recommendations in this document are believed to be accurate and reliable, but are presented without express or implied warranty. Users must take full responsibility for their applications of any products specified in this document. The information in this document is proprietary to Nortel Networks NA Inc.

The software described in this document is furnished under a license agreement and may be used only in accordance with the terms of that license. The software license agreement is included in this document.

## **Trademarks**

NORTEL NETWORKS is a trademark of Nortel Networks.

Microsoft, MS, MS-DOS, Windows, and Windows NT are registered trademarks of Microsoft Corporation.

All other trademarks and registered trademarks are the property of their respective owners.

# Contents

---

<b>Chapter 1</b>	
<b>Requirements for installing Desktop Messaging</b>	<b>7</b>
About CallPilot Desktop Messaging	7
Hardware requirements	7
Optional hardware	7
Software requirements	8
Integrated clients	8
Internet Mail clients	8
Related documents	8
Where to get help	9
<b>Chapter 2</b>	
<b>Configuring your system for Desktop Messaging</b>	<b>11</b>
Before you install Desktop Messaging	11
Desktop Messaging and data network security	11
Configuring IMAP/LDAP/SMTP servers for Desktop Messaging	12
IMAP	12
LDAP	12
SMTP	12
Configuring environments without a DNS	13
Configuring Desktop Messaging with IP address only	13
<b>Chapter 3</b>	
<b>Installing and configuring Desktop Messaging</b>	<b>15</b>
Installation information	15
Uninstalling an earlier version of Desktop Messaging	16
If you are Installing Desktop Messaging for Outlook and GroupWise	16
Setting up Microsoft Outlook 2000 in Corporate mode	16
Installing Desktop Messaging	17
After you install Desktop Messaging	22
To configure access to Desktop Messaging on subscribers' computers	22
Configuring Outlook 2002	23
Using Outlook 2002 as an Internet mail client	23
Configuring Novell GroupWise	25
Removing the CallPilot Message Store	25
Configuring GroupWise for Desktop Messaging	25
Configuring Lotus Notes	27
Updating the Mail database	27
Updating the database automatically	27
Updating the database manually	27

Setting up the CallPilot Address Book on the Lotus Notes server .....	28
Setting up the CallPilot Address Book Automatic update .....	30
Configuring Internet Mail clients .....	31
Configuring Outlook Express or Outlook in Internet Mail mode .....	31
Configuring an IMAP account on Outlook or Outlook Express .....	31
Configuring an LDAP directory service for Outlook Express or Outlook .....	33
Configuring special settings for Outlook Express or Outlook in Internet Mail mode	34
Testing the Outlook Express or Outlook in Internet Mail mode IMAP account ...	34
Configuring Netscape Messenger 4.x .....	35
Configuring an IMAP account on Netscape Messenger .....	35
Configuring an LDAP directory service for Netscape Messenger .....	37
Configuring Netscape Messenger 6.2 .....	38
Configuring an IMAP account on Netscape Messenger .....	38
Configuring an LDAP directory service for Netscape Messenger .....	39
Testing the Netscape Messenger IMAP account .....	39
Configuring Eudora Pro .....	40
Configuring an IMAP account on Eudora Pro .....	40
Configuring an LDAP directory service for Eudora Pro .....	42
Testing the Eudora Pro IMAP account .....	42

## **Chapter 4**

### **Troubleshooting . . . . . 43**

Troubleshooting during installation .....	43
Microsoft Outlook default mail client .....	44
No authorization to perform this operation .....	44
Troubleshooting log on problems .....	46
Invalid credentials .....	46
CallPilot Logon Failure .....	46
Troubleshooting Outlook 2002 problems .....	47
Accessing CallPilot support tools in Outlook 2002 .....	47
Troubleshooting Lotus Notes log on problems .....	48
Subscribers cannot see CallPilot Desktop Messaging .....	48
Replacing the Mail database design .....	48
No entries in CallPilot Personal Name and Address Book .....	49
The dynamic link library nNOTES.dll could not be found in the specified path	49
You download the CallPilot address book and 0 entries are found .....	49
Troubleshooting after logging on .....	50
The CallPilot address book is empty .....	50
The subscriber has message access problems .....	50
The subscriber has problems sending messages .....	50
The subscriber cannot send messages .....	51
The subscriber cannot send a CallPilot message .....	51

---

Non-delivery notification .....	52
"Unknown" appears in the Sender field .....	52
The subscriber has problems with receiving replies .....	53
Deleted messages remain in the subscriber's mailbox .....	53
The subscriber cannot delete messages .....	53
Messages no longer on server .....	53
Voice message does not play on telephone .....	53
The Message Waiting Indicator is active but there is no new message .....	54
Accessing Desktop Messaging online Help .....	55
To access online Help .....	55
Using Desktop Messaging Support Tools .....	56
Resetting the CallPilot message store for Microsoft Outlook .....	56
Using CPTrace .....	57
Using CPTrace .....	57
CP Trace settings .....	58
<b>Index .....</b>	<b>59</b>



---

# Chapter 1

## Requirements for installing Desktop Messaging

---

### About CallPilot Desktop Messaging

With CallPilot Desktop Messaging from subscribers can access their CallPilot mailbox from their personal computer. Subscribers can manage all their voice messages in one graphical interface. They can still access their mailbox from their telephone at any time.

With CallPilot Desktop Messaging subscribers can:

- listen to voice messages
- record and send voice messages
- forward and reply to voice messages
- add message options such as urgent and private
- change their CallPilot password

This guide tells a System Administrator how to install, configure and troubleshoot CallPilot Desktop Messaging on subscribers' computers.

Subscribers can perform some configuration and troubleshooting tasks with your guidance.

### Hardware requirements

The following list contains both the minimum and recommended hardware that Desktop Messaging software needs for operation.

- IBM PC or compatible:
  - minimum Pentium/586 or faster system with 16 Mbytes of RAM minimum; 32 Mbytes recommended
- Monitor:
  - 16-color VGA 640 x 480 capability minimum; 256-color SVGA 800 x 600 capability recommended
- Disk drive:
  - 15 Mbytes of free space
- CD-ROM drive
- Windows-compatible mouse and keyboard
- LAN connection to CallPilot Mini/CallPilot 150. Subscribers can access their CallPilot messages over the LAN via ISDN, ADSL, dial-up modem or ethernet.

#### Optional hardware

- a sound card and a set of speakers for playing messages on a computer
- a microphone for recording messages on a computer

## Software requirements

### Integrated clients

Integrated clients run with a corporate email server. You can use Desktop Messaging with one or more of these clients:

- Microsoft Outlook 2000 in Corporate mode
- Microsoft Outlook 98 in Corporate mode
- Microsoft Outlook XP
- Novell GroupWise 6.0
- Lotus Notes 4.6 and 5.0



**Note:** Desktop Messaging does not support the Microsoft Windows Terminal Server running the Citrix client.

---

### Internet Mail clients

You can use Desktop Messaging with these IMAP Internet clients:

- Microsoft Outlook Express 5.0 and 6.0
- Microsoft Outlook 98, 2000 and 2002 (XP) in Internet mail mode
- Netscape Messenger 6.2
- Qualcomm Eudora Pro Comm Center 5.0

## Related documents

For information about how subscribers use CallPilot Desktop Messaging, refer to the:

- *CallPilot Mini/150 Desktop Messaging Quick Reference Guide*
- CallPilot Unified (Desktop) Messaging online Help and online guides
- *CallPilot Reference Guide* for CallPilot 150
- *CallPilot Mini Reference Guide* for CallPilot Mini

For information about setting up CallPilot Message Networking refer to the:

- *CallPilot Message Networking Set Up and Operation Guide*
- *CallPilot Manager Set Up and Operation Guide*

## Where to get help

### USA and Canada

#### Authorized Distributors - ITAS Technical Support

**Telephone:**

1-800-4NORTEL (1-800-466-7835)

If you already have a PIN Code, you can enter Express Routing Code (ERC) 196#.

If you do not yet have a PIN Code, or for general questions and first line support, you can enter ERC 338#.

**Website:**

<http://www.nortelnetworks.com/itas/>

**email:**

[naitas@nortelnetworks.com](mailto:naitas@nortelnetworks.com)

#### Presales Support (CSAN)

**Telephone:**

1-800-4NORTEL (1-800-466-7835)

Use Express Routing Code (ERC) 1063#

### EMEA (Europe, Middle East, Africa)

#### Technical Support - CTAS

**Telephone:**

00800 800 89009

**Fax:**

44-191-555-7980

**email:**

[emeahelp@nortelnetworks.com](mailto:emeahelp@nortelnetworks.com)

### CALA (Caribbean & Latin America)

#### Technical Support - CTAS

**Telephone:**

1-954-858-7777

**email:**

[csrmgmt@nortelnetworks.com](mailto:csrmgmt@nortelnetworks.com)

### APAC (Asia Pacific)

#### Technical Support - CTAS

**Telephone:**

+61 388664627

**Fax:**

+61 388664644

**email:**

[asia\\_support@nortelnetworks.com](mailto:asia_support@nortelnetworks.com)



---

## Chapter 2

# Configuring your system for Desktop Messaging

---

### Before you install Desktop Messaging

Before using Desktop Messaging:

- In CallPilot Manager, make sure that the number of Maximum Outcalling Channels is enough to accommodate the expected CallPilot telephone player use. The Outcalling Channels value controls the number of simultaneous channels that can be used for outcalling. For information on setting the outcalling channels, refer to the *CallPilot Manager Set Up and Operation Guide*.
- If you are installing Desktop Messaging for subscribers who use Outlook 98 or Outlook 2000, make sure their clients are set to the proper mode. For more information refer to [“Software requirements” on page 8](#).

### Desktop Messaging and data network security

Due to the complexity and diversity of network configurations, this guide does not cover data network security issues. Discuss security issues with a security specialist or data network administrator.

## Configuring IMAP/LDAP/SMTP servers for Desktop Messaging

CallPilot supports IMAP/LDAP protocols, which let Desktop Messaging subscribers access their CallPilot mailboxes using Microsoft Outlook, Lotus Notes, Novell GroupWise, and selected third-party Internet mail clients: Microsoft Outlook Express, Netscape Messenger, and Qualcomm Eudora Pro.

Each type of Desktop client is configured and used slightly differently. To configure a specific Desktop client, refer to [“Installing and configuring Desktop Messaging” on page 15](#).

Although you individually configure the Desktop clients, you configure CallPilot 150 and CallPilot Mini the same way for all the Desktop clients it supports. Follow the instructions in this chapter to configure the IMAP/LDAP/ SMTP servers.

### IMAP

Internet Message Access Protocol (IMAP) lets a client access and use electronic mail messages on a server. These messages are stored on CallPilot 150 and CallPilot Mini.

IMAP lets subscribers check for messages from any location with an Internet connection. IMAP also lets subscribers access messages from multiple locations. IMAP is a method of accessing electronic mail or bulletin board messages that are kept on a shared mail server. IMAP lets a client email program access remote message stores as if they were local. For example, email stored on an IMAP server can be accessed from a computer at home, a workstation at the office, and a notebook computer while traveling, without the need to transfer messages or files between computers.

### LDAP

Lightweight Directory Access Protocol (LDAP) is a set of protocols for accessing information directories. LDAP supports TCP/IP, which is necessary for any type of Internet access. LDAP lets a client search for and use information entries on a directory server, such as CallPilot 150 and CallPilot Mini. For example, a typical entry in the CallPilot directory contains attributes of a subscriber such as name, telephone number, and CallPilot mail address. Internet clients can use LDAP to query address book information from the CallPilot directory, perform address resolution, or search for specific subscribers, if this functionality is implemented by the Internet client.

### SMTP

Simple Mail Transfer Protocol (SMTP) is a protocol for sending email messages between servers. Most email systems that send mail over the Internet use SMTP to send messages from one server to another. These messages can then be retrieved with an email client using IMAP. SMTP is also generally used to send messages from a mail client to a mail server. This is why you must specify both the IMAP server and the SMTP server when you configure your email application.

Since Voice Profile for Internet Mail (VPIM) Networking also uses SMTP, you do much of the configuration for IMAP in the same places you set up VPIM Networking.

## Configuring environments without a DNS

The Domain Name System (DNS) is an Internet service that translates domain names into IP addresses. Because domain names are alphabetic, they are easier for subscribers to remember. The Internet is based on IP addresses. Every time you use a domain name, therefore, a DNS must translate the name into the corresponding IP address. For example, the domain name `www.example.com` can translate to `198.105.232.4`.

The DNS is, in fact, its own network. If one DNS server does not know how to translate a particular domain name, it asks another one, and so on, until the correct IP address is returned.

Desktop Messaging uses Domain Name resolution, which is provided by a DNS. If your network does not have a DNS, then you must configure Desktop Messaging to use IP addresses.

## Configuring Desktop Messaging with IP address only

If you do not use DNS to resolve domain names, configure CallPilot 150 and CallPilot Mini and client computers to use an IP address only:

- 1** Ensure no DNS servers are currently configured.
- 2** Enter the host name on CallPilot 150 or CallPilot Mini.
- 3** Configure computers running Desktop Messaging with the IP address of CallPilot 150 or CallPilot Mini.



---

## Chapter 3

# Installing and configuring Desktop Messaging

---

It takes approximately 10 minutes to install CallPilot Desktop Messaging. Depending on the subscribers' expertise, you can ask them to install Desktop Messaging on their computer.

### Installation information

Before you install CallPilot Desktop Messaging on a subscriber's computer:

- Make sure the subscriber's computer has the correct hardware and software requirements. Refer to [“Hardware requirements” on page 7](#) and [“Software requirements” on page 8](#).
- If the subscriber has version 1.06 or earlier of Desktop Messaging, you must uninstall the earlier version before you do the installation procedure. Refer to [“Uninstalling an earlier version of Desktop Messaging” on page 16](#).
- Ensure that the microphones, speakers, and sound cards that are connected to the subscriber's computer are configured. Refer to the manufacturer's documentation.
- Have this information available:
  - the fully qualified domain name (FQDN) of CallPilot 150 or CallPilot Mini, or the IP address, if you do not have a DNS
  - the SMTP/VPIM prefix of CallPilot 150 or CallPilot Mini. If you use Message Networking, include this prefix.
  - the subscriber's mailbox number



**Note:** If the subscriber uses Novell GroupWise they must have Windows Messaging 4.0 installed on their computer. This is normally the case when Windows is installed on a computer. However, if Windows Messaging 4.0 is not installed, the GroupWise installation gives you these options:

- Install the complete Windows Messaging system.
- Leave Windows Messaging as is.

Install the Complete Windows Messaging system even if Windows Messaging is already installed. This ensures that the GroupWise option is available during Desktop Messaging installation.

---

## Uninstalling an earlier version of Desktop Messaging

If the subscriber has Desktop Messaging 1.06 or earlier on their computer, uninstall it before you do the installation procedure.

### To uninstall a previous version of Desktop Messaging

- 1 Quit any open applications, including the Desktop Messaging installation program.  
If you use Microsoft Outlook, it can take an additional minute or two for the mail services to shut down.
- 2 Click the Windows **Start** button, point to **Programs**, point to **Nortel Networks CallPilot Desktop Messaging** and click **Uninstall CallPilot Desktop Messaging** for the specific email client. The Uninstall window appears.
- 3 Click the **Uninstall NOW!** button.
- 4 If a message appears that asks if you want to delete any files beginning with the letters nb, nm, or ns, click the **Yes** button.
- 5 If you are uninstalling Desktop Messaging for Lotus Notes, you must enter your Lotus Notes password before the uninstall process continues.

## If you are Installing Desktop Messaging for Outlook and GroupWise

If you want to install Desktop Messaging for both Microsoft Outlook and Novell GroupWise on the same computer, you must install each client separately.

- 1 The first time you install Desktop Messaging, select the Outlook email client only, and when you reach the **Additional Options** screen, select **Update default mail profile**.
- 2 Install Desktop Messaging a second time, and this time select the Novell GroupWise email client only. When you reach the **Additional Options** screen, select **Update default mail profile**.

## Setting up Microsoft Outlook 2000 in Corporate mode

If the subscriber is using Microsoft Outlook 2000 as an integrated client that runs with a corporate email server, before you install Desktop Messaging, make sure the subscriber is in Corporate mode.

- 1 Start Outlook 2000 on the subscriber's computer.
- 2 On the **Tools** menu click **Options**.  
The Options dialog box appears.
- 3 Click the **Mail Services** tab.
- 4 Click the **Reconfigure Mail Support** button.  
The Email Service Options wizard appears.
- 5 Make sure that **Corporate or Workgroup** is selected.  
If it is not already selected, select it and complete the rest of the wizard.



**Note:** If the subscriber uses Outlook 98, refer to the Knowledge Base at the Microsoft website for information about configuring Outlook 98 in Corporate mode.

---

## Installing Desktop Messaging

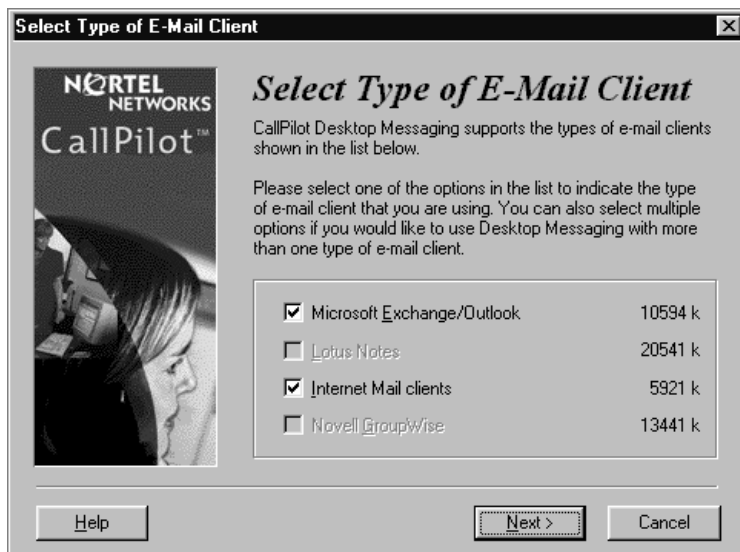
You install Desktop Messaging from the CallPilot 150/CallPilot Mini Documentation and Client Software CD.

### To install Desktop Messaging

- 1 Load the **CallPilot Mini/CallPilot 150 CD** in the CD-ROM drive of your computer.
  - 2 Double-click the **CD** folder and double-click the **Optional Software** folder.
  - 3 Double-click the **Desktop Messaging** folder.
  - 4 Double-click the **setup.exe** icon.
- The setup program starts and the Welcome window appears.



- 5 Click the **Next** button.
- The Select Type of E-Mail Client screen appears.



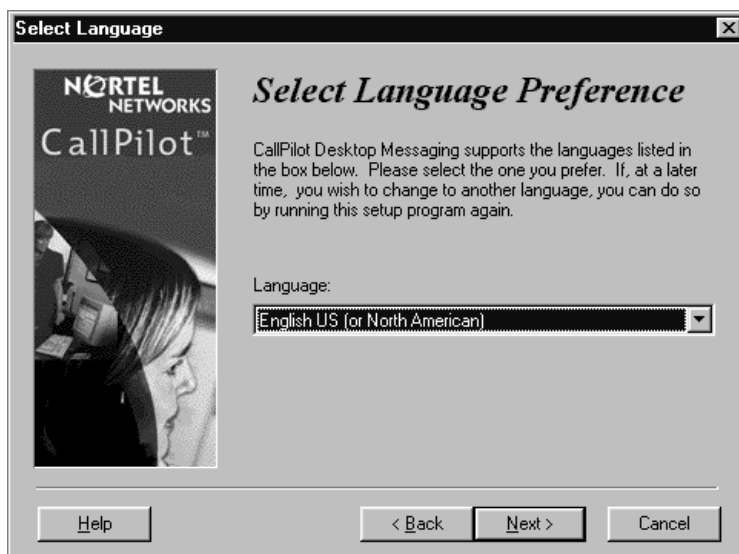
- 6 Select the check boxes for the email clients that you use. Internet Mail clients include Microsoft Outlook Express, Microsoft Outlook in Internet mail mode, Netscape Messenger, and Qualcomm Eudora Pro.



**Notes:**

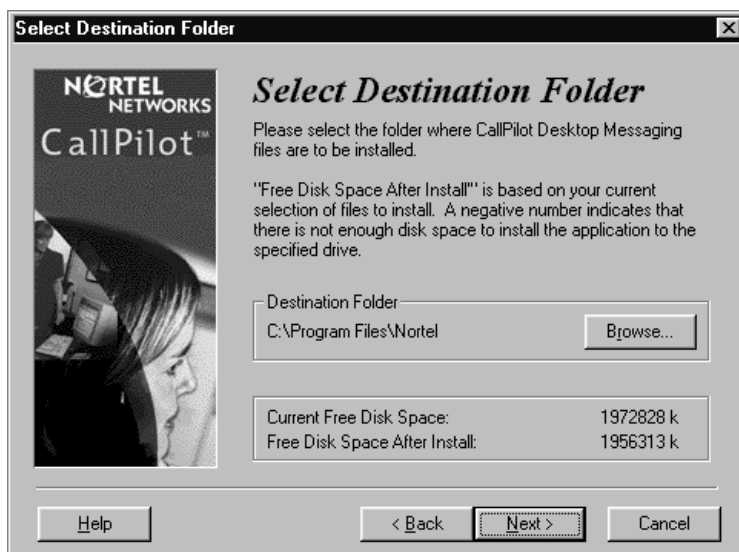
- If you want to install Outlook and GroupWise on the same computer, you must follow the procedure [“If you are Installing Desktop Messaging for Outlook and GroupWise” on page 16](#).
  - If you are using Outlook in Internet Mail mode (rather than Corporate mode), clear the Microsoft Exchange/Outlook option. After you install Desktop Messaging, go to [“Configuring Outlook Express or Outlook in Internet Mail mode” on page 31](#).
- 

- 7 Click the **Next** button.  
The Language selection screen appears.



- 8 From the **Language** list box, select the language you want to use.

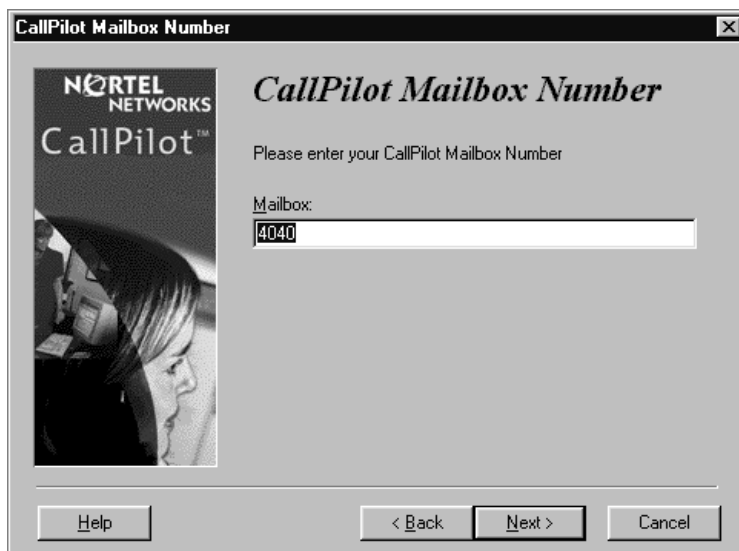
- 9 Click the **Next** button.  
The Select Destination Folder screen appears.



- 10 Click the **Next** button to accept the default directory, or click the **Browse** button if you want to locate other destination folders, and select the folder you want to install Desktop Messaging in.

Nortel Networks recommends that you install Desktop Messaging in the default folder.

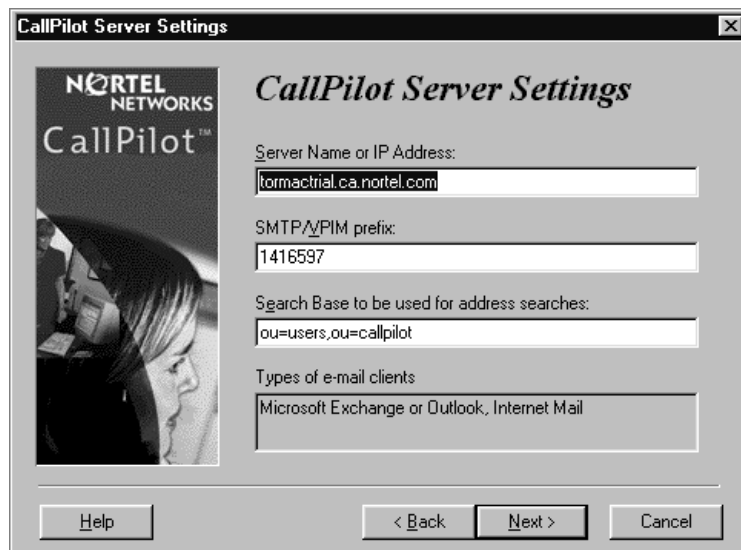
- 11 Click the **Next** button.  
The CallPilot Mailbox Number screen appears.



- 12 Enter the subscriber's mailbox number. The mailbox number is usually the subscriber's extension number.

- 13 Click the **Next** button.

The CallPilot Server Settings screen appears.




The **CallPilot Server Settings** dialog box is shown. It features the Nortel Networks CallPilot logo on the left. The right side contains four text input fields: 'Server Name or IP Address' with the value 'tormactrial.ca.nortel.com', 'SMTP/VPIM prefix' with '1416597', 'Search Base to be used for address searches' with 'ou=users,ou=callpilot', and 'Types of e-mail clients' with 'Microsoft Exchange or Outlook, Internet Mail'. At the bottom are buttons for 'Help', '< Back', 'Next >', and 'Cancel'.

- 14 In the **Server Name or IP Address** box type the FQDN or IP address of the CallPilot Mini or CallPilot 150 system.
- 15 In the **SMTP/VPIM prefix** box type the SMTP/VPIM prefix of the CallPilot subscriber's address. If CallPilot Networking is not enabled, leave this box blank, otherwise enter the value from the Local Prefix field of the Digital Networking Properties page in CallPilot Manager.
- 16 Do not change the information in the **Search base** box.
- 17 Click the **Next** button.

The Ready to Install! window appears.

**Note:** The Fax Printer option is not available on CallPilot 150 or CallPilot Mini.



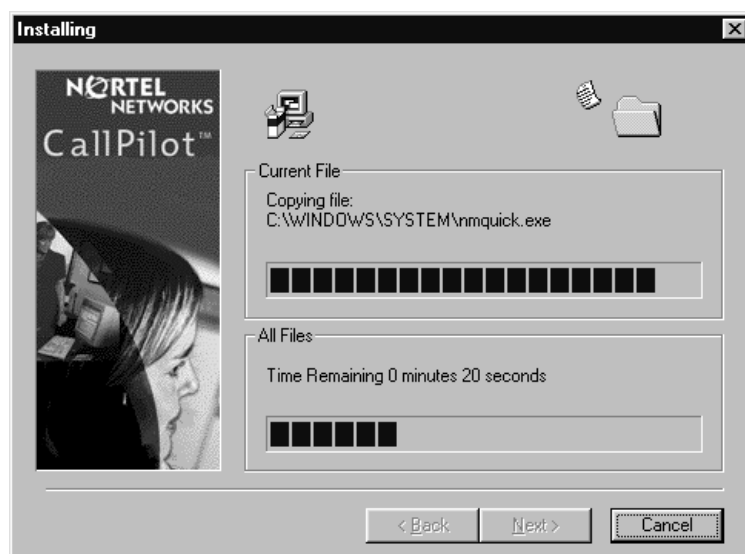
The **Ready to Install!** dialog box is shown. It features the Nortel Networks CallPilot logo on the left. The right side contains the text: 'You are now ready to install CallPilot Desktop Messaging. Press the Next button to begin the installation or the Back button to reenter the installation information.' Below this is the 'Additional Options' section with three checkboxes: 'Install Fax Printer Driver' (checked), 'Update default mail profile' (checked), and 'Update Lotus Notes databases' (unchecked). At the bottom are buttons for 'Help', '< Back', 'Next >', and 'Cancel'.

If you are installing Desktop Messaging for Lotus Notes, you must enter your Lotus Notes password before the installation process continues. The Desktop Messaging installation program tries to detect Lotus Notes by searching for the notes.ini file on the hard drive. If the file is not found, the Lotus Notes option is disabled during installation. If the notes.ini file is located on a server, you can disable Lotus Notes detection to install Desktop Messaging for Lotus Notes. To disable Lotus Notes detection:

- a Quit the Desktop Messaging installation program.
- b Click the **Start** button and click **Run**.  
The Run dialog box appears.
- c In the **Open** box type *setup.exe /ld*.
- d Restart the Desktop Messaging installation program.  
If you are installing Desktop Messaging on a Windows NT or a Windows 2000 system, a message appears that prompts you to enter your user name and password.

**18** Click the **Next** button.

The installation progress bar appears and indicates that files are being copied.



**19** Click the **Finish** button to complete the installation.

## After you install Desktop Messaging

After you install Desktop Messaging:

- Set the default email client.
- Configure access to Desktop Messaging on subscribers' computers
- Set the Timezone and Daylight Savings Time setting in CallPilot Manager

### To set the default email client

- 1 Click the Windows **Start** button, point to **Settings** and click **Control Panel**.  
The Control Panel window appears.
- 2 Double click the **Internet Options** icon.  
The Internet Properties window appears.
- 3 Click the **Programs** tab.
- 4 In the **E-mail** list box, make sure the client that is displayed is the e-mail client you are using. If another email client is displayed, select the correct email client from the **E-mail** list box and click the **OK** button.

### To configure access to Desktop Messaging on subscribers' computers

On each subscriber computer:

- 1 Start Desktop Messaging for the first time on the client computer.  
The Desktop Messaging Logon page appears.
- 2 In the **Server** box type the IP address.
- 3 In the **Password** and **Mailbox** boxes, enter the subscriber's password and mailbox numbers.  
The email client opens.

### To set the Timezone and Daylight Savings Time settings

- 1 Start CallPilot Manager. For information about logging onto CallPilot Manager, refer to the *CallPilot Manager Set Up and Operation Guide*.
- 2 Click the **Configuration** heading.
- 3 Click the **System Properties** link.  
The System Properties page appears.
- 4 Select the timezone you are in from the **Timezone** list box. The timezone controls the deliver and receive settings for Desktop Messaging.
- 5 Select the **Daylight Savings Time** check box at the start of Daylight Savings Time. When Daylight Savings Time ends, clear the check box. This setting ensures that the message times for Desktop Messaging are correct.
- 6 Click the **Submit** button.

## Configuring Outlook 2002

Outlook 2002 handles mail accounts differently than previous versions of Outlook. This section describes how to configure the Desktop Messaging options for Outlook 2002.

### To set Desktop Messaging options

- 1 In Outlook, on the **Tools** menu, click **E-mail Accounts**.  
The E-mail Accounts wizard appears.
- 2 Choose **View or change existing e-mail accounts**, and then click **Next**.
- 3 In the e-mail account list, choose **CallPilot Desktop Messaging**, and then click **Change**.  
The Desktop Messaging options dialog box appears.
- 4 Make changes to Desktop Messaging settings, as required, and then click the **OK** button.
- 5 Click **Finish** to exit the E-mail Accounts wizard.

### Using Outlook 2002 as an Internet mail client

In Outlook 2002, Corporate mode and Internet Mail do not exist. Instead, the subscriber can manage all Exchange server, IMAP and POP server, and Web-based e-mail accounts from the same interface.

This section describes how to configure Outlook 2002 as an Internet mail client that works with Desktop Messaging for Internet Mail clients.

If the subscriber uses Desktop Messaging with an Exchange Server, you should install Desktop Messaging for Outlook on their computer. The Desktop Messaging installation program automatically configures Outlook with the required settings.

### To define the CallPilot mailbox settings

- 1 In Outlook, on the **Tools** menu click **E-mail Accounts**.  
The E-mail Accounts wizard appears.
- 2 Select **Add-a new e-mail account**, and then click **Next**.  
The E-mail Servers page appears.
- 3 Select **IMAP**, and then click **Next**.  
The Internet E-mail Settings (IMAP) page appears.
- 4 Specify the settings for the subscriber's CallPilot mailbox.
  - **User Information**—Type the subscriber's name and CallPilot address in the boxes.  
Enter the address in the form:  
  
<SMTP/VPIM prefix><mailbox number>@<local CallPilot server>
  - **Logon Information**—Type the subscriber's CallPilot mailbox number and password in the boxes.

- Do not select the **Log on using Secure Password Authentication (SPA)** check box.
  - **Server Information**—Enter the CallPilot fully qualified domain name (FQDN) for both the incoming and outgoing servers.
- 5 Click **Next**.  
A message appears that confirms the changes.
  - 6 Click **Finish**.

## To configure access to the CallPilot Address Book

- 1 In Outlook, on the **Tools** menu click **E-mail Accounts**.  
The E-mail Accounts wizard appears.
- 2 Select **Add a new directory or address book**, and then click **Next**.
- 3 Select **Internet Directory Service (LDAP)** and then click **Next**.
- 4 In the **Server Name box**, type the CallPilot FQDN.
- 5 Click **Next**.  
A message appears that confirms the changes.
- 6 Click **Finish**.

## To configure text formatting

- 1 In Outlook, on the **Tools** menu click **Options**.
- 2 Click the **Mail Format** tab.
- 3 In the **Message Format** section, select **Plain Text**.
- 4 Click **OK**.

## Configuring Novell GroupWise

This section is an overview of how GroupWise is integrated with CallPilot. For information on how to use GroupWise to address, compose, open, delete, and perform other CallPilot operations, refer to the *CallPilot Mini/150 Desktop Messaging Quick Reference Guide* or the online Help.



**Note:** If the subscriber uses Novell GroupWise they must have Windows Messaging 4.0 installed on their computer. This is normally the case when Windows is installed on a computer. However, if Windows Messaging 4.0 is not installed, the GroupWise installation gives you these options:

- Install the complete Windows Messaging system.
- Leave Windows Messaging as is.

Install the Complete Windows Messaging system even if Windows Messaging is already installed. This ensures that the GroupWise option is available during Desktop Messaging installation.

---

## Removing the CallPilot Message Store

When you install Desktop Messaging on the computer of a subscriber who uses GroupWise, the folder is added to the subscriber's GroupWise mailbox.

You or the subscriber can use this procedure to remove the CallPilot Message Store from GroupWise.

### To remove the CallPilot Message Store

- 1 Click the Windows **Start** button, point to **Settings** and click **Control Panel**.  
The Control Panel window appears.
- 2 Click the **Add/Remove Programs** icon.  
The Add/Remove Programs Properties dialog box appears.
- 3 In the list select **CallPilot Desktop Messaging for Novell GroupWise**.
- 4 Click the **OK** button.

## Configuring GroupWise for Desktop Messaging

- 1 Start GroupWise.
- 2 On the **Tools** menu click **CallPilot**, point to **CallPilot Configuration**, and click **CallPilot Configuration Menu**.  
The CallPilot Desktop Messaging dialog box appears.
- 3 In the **Server** box enter the CallPilot 150 or CallPilot Mini system name or IP Address.
- 4 In the **SMTP/VPIM prefix** box **enter** the SMTP/VPIM prefix of the subscriber's address. If the Network Messaging option is not enabled leave this box blank. If Network Messaging is installed, enter the value in CallPilot Manager, in the Digital Networking Properties page, in the Local Prefix box.

- 5 In the **Mailbox** box, enter the subscriber's mailbox number.
- 6 At **Check for new messages** (Automatically/Manually), if the subscriber uses ISDN or dialup, select **Manually**. This option saves on toll charges by not continuously checking for new messages on CallPilot 150 or CallPilot Mini.
- 7 Select **Include original message header when forwarding or replying**. This adds header information to each forward or reply, so that Desktop Messaging messages are consistent with other email messages. Subscribers can disable this feature if they wish to.
- 8 Select the **Remember password** check box if the subscriber does not want to enter their password each time they log on.
- 9 Click the **Address Book** tab.
- 10 In the **Path** box enter the location of the local CallPilot address book.
- 11 From the **Order** list box, select the order in which you want the names to be displayed in the address book.
- 12 Select the **Remind me to download address book every \_\_ day(s)** if subscribers want to download addresses automatically from the system. The default is every 20 days. Subscribers can change the number of days, if they want to. If subscribers do not want to download the address book, do not select this check box.
- 13 If you want to download the address book now, click the **Download now** button. Subscribers can click this button whenever they want to download the address book.
- 14 Click the **Apply** button.
- 15 Click the **Audio** tab.
- 16 Select the **Choose audio device before each audio session** check box if the subscriber does not use either the telephone or computer to listen to their messages on a regular basis.
- 17 Click the **Download file before playing** check box if the subscriber wants to download messages before they play them. After the message downloads, the subscriber can play the message additional times without delay, and use GroupWise to forward it to another CallPilot subscriber.
- 18 From the **Audio device** setting, select either **Computer** or **Telephone** as the playback and recording device. If you select **Telephone**, enter a telephone number and click **Add**. All telephone numbers are stored, which is useful if the subscriber listens to or records messages from multiple locations.
- 19 Click the **Apply** button.
- 20 Click the **Volume Control** tab.
- 21 Select the default speaker and microphone volumes from this tab. The microphone level can be changed only from this dialog box. The subscriber can change the volume level and the volume control on the player from this dialog box. The selected volume level is used for future player sessions.
- 22 Click **OK** to save your changes and close the dialog box.

## Configuring Lotus Notes

### Updating the Mail database

In Lotus Notes, the Mail database design determines which messages appear in the Notes message list. There are two ways to update the database design for Desktop Messaging:

- **automatic update:** this updates the database automatically when you install Desktop Messaging (recommended).
- **manual update:** you or the subscriber must update the database manually after you install Desktop Messaging.

We recommend the automatic update option. It provides the optimal configuration for message storage, is compatible with customized database designs, and does not require any manual updates to the database design.

### Updating the database automatically

To automatically update the Mail database, select the Update Lotus Notes Databases option when you install Desktop Messaging. When the installation is complete, Desktop Messaging is ready to use and does not require any manual changes to the Mail database.

When you use this update method, Lotus Notes stores CallPilot messages in a separate folder. This configuration lets users easily prioritize CallPilot messages since they are not mixed with other e-mail messages.

### Updating the database manually

You should update the database design manually only if:

- the subscriber wants CallPilot messages stored in the same Inbox as their Lotus Notes e-mail messages
- the subscriber's database design has not been customized, and the subscriber does not intend to customize the database design in the future
- you are familiar with modifying Lotus Notes database design

To perform a manual update, you must replace the current database design using a CallPilot template. Replacement of the database design removes any customization in the current database design.

### To update the Mail database design manually

- 1 Start Lotus Notes.
- 2 On the **Help** menu select **About Notes Desktop**.  
Make a note of the version of Lotus Notes.
- 3 Click the **Mail** database. The Mail database has the subscriber's name and the envelope icon.

- 4 On the **File** menu, click **Database**, and then click **Replace Design**.  
The Replace Database Design dialog box appears.
- 5 Select **Template Server**.  
The Template Server window appears.
- 6 Select **Local**, and then click **OK**.
- 7 Select the **Show advanced templates** check box.
- 8 From the list box, select the version of CallPilot Mail for the version of Lotus Notes that you use.
- 9 Click **Replace**.  
A message appears that asks you to confirm your request to change the database view.
- 10 Click **Yes**.

## Setting up the CallPilot Address Book on the Lotus Notes server

If you want users to access the address book from the Notes server, you must set it up for them. To set up a copy of the CallPilot address book on the Notes server, you install an empty Lotus Notes database (callpilot.nsf) on the server and fill the database with the CallPilot address book information.

Update the address book on the Notes server regularly to ensure that the address information is accurate. Alternatively, you can set up the Lotus Notes server to automatically update the CallPilot address book using the automatic update utility.

### To install the CallPilot database

- 1 Insert the CallPilot Desktop CD in the Lotus Notes server CD-ROM drive.
- 2 From the Server directory, run setup.exe.  
An empty Lotus Notes database file, called *callpilot.nsf*, is created.

### To adding the CallPilot database to the Lotus Notes workspace

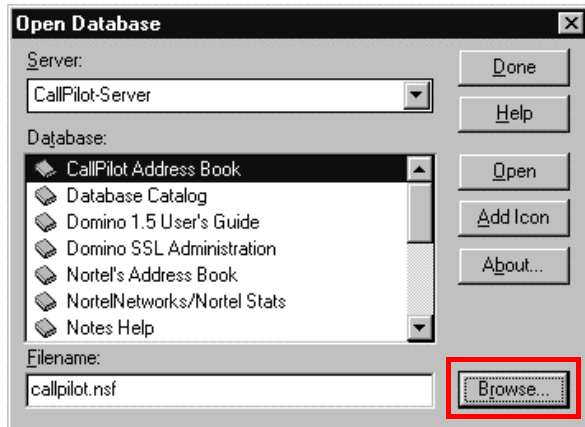
- 1 From the Lotus Notes server, click **File**, point to **Database** and click **Open**.  
The Open Database dialog box appears.
- 2 From the Server Workspace, open a Lotus Notes database.



**Note:** Make sure that you open the database from the Server Workspace, not the Local Workspace.

---

- 3 Click the **Browse** button to locate the callpilot.nsf file in the notes/data directory.



- 4 Select the callpilot.nsf file and click the **Select** button.
- 5 Click **Add Icon** to add the icon to the Server Workspace.  
The new icon appears on the Lotus Notes server workspace.
- 6 Double-click the icon to open the address book.
- 7 On the **View** menu, select **CallPilot (People)**.
- 8 On the **Actions** menu, click **Download CallPilot Address Book**.  
To download the address book, you must have the Lotus Notes server administrative password. Contact your Information Systems administrator if you do not have the password.
- 9 If the Download CallPilot Address Book command is not available on the Actions menu:
  - a In Designer mode, open the callpilot.nsf file.
  - b On the **Actions** menu, click **Download CallPilot Address Book**.
  - c On the **Edit** menu, click **Properties**.  
The Properties dialog box appears.
  - d Make sure that the **Hide Action if Formula is True** check box is cleared.
  - e Close the Properties dialog box.

## Setting up the CallPilot Address Book Automatic update

You can configure the Automatic update utility as a scheduled task to update the CallPilot address book stored on the Lotus Notes server.

### To set up the Automatic update utility

- 1 Run the CallPilot server installation, if it has not already been run.
- 2 Update the CallPilot address book manually to make sure that there are no conflicts. To manually download the CallPilot Address Book refer to procedure on page [“To update the Mail database design manually” on page 27](#).
- 3 Open the CallPilot Address Book.
- 4 Navigate to the **Folders and Views/Servers/Program** folder.
- 5 Select the **Program** folder and click **Add Program**.  
The Program view appears.
- 6 In the **Program name** box, type *nmlnadbk.exe*.
- 7 Make sure that the **Command line** box is empty.
- 8 Set **Enabled/disabled** to **Enabled**.
- 9 Select the time and frequency that you want the update utility to run.
- 10 Click the **Save** button, and close the dialog box.  
Lotus Notes updates the address book based on the schedule you specified.

## Configuring Internet Mail clients

CallPilot Desktop Messaging supports these Internet mail clients:

- Outlook Express
- Outlook in Internet mail mode
- Netscape Messenger
- Eudora Pro



**Note:** You must use at least the minimum supported version of the Internet mail client. In particular, Netscape Messenger versions earlier than 4.5 are incompatible with CallPilot Desktop Messaging. Your Information Systems administrator can give you more information on upgrading your Internet mail client.

---

You need the following information to configure your Internet mail client:

- the FQDN or IP address of CallPilot 150 or CallPilot Mini
- the subscriber's CallPilot mailbox number and password
- the SMTP/VPIM prefix of CallPilot 150 or CallPilot Mini. If you use Message Networking, include this prefix. Enter the value from the Local Prefix box of the Digital Networking Properties page in CallPilot Manager.

You can provide this information to subscribers if you want them to configure the client.

## Configuring Outlook Express or Outlook in Internet Mail mode

If your Internet mail client is Microsoft Outlook Express or Outlook, use the following procedures.

### Configuring an IMAP account on Outlook or Outlook Express

- 1 Start Outlook.
- 2 On the **Tools** menu, select **Services**.  
The Internet Accounts screen appears.
- 3 Click **Add**, and then click the appropriate **Mail** option.  
The Internet Connection Wizard starts up.
- 4 In the **Display name** box type your name.
- 5 Click the **Next** button.  
The Internet Connection Wizard - Internet E-mail Address screen appears.

- 6** In the **E-mail address** box type the subscriber's CallPilot address in the form

<SMTP/VPIM prefix><mailbox number>@<local CallPilot Mini/CallPilot 150 system>.  
For example: 14165556003@voiceserver.ca.result.com, where:

- 1416555 is the SMTP/VPIM prefix. If you use Message Networking, include this prefix.
- 6003 is the CallPilot mailbox number
- voiceserver.ca.result.com is the FQDN of the CallPilot Mini/CallPilot 150 system. If your network does not use DNS, enter <hostname>.localdomain as the FQDN (where the hostname is that of the CallPilot Mini/CallPilot 150 system)  
or  
if you are not using a DNS environment, instead of the FQDN type the IP address of the CallPilot.

- 7** Click the **Next** button.

The E-Mail Server Names screen appears.

- 8** From the list box choose **IMAP** as the incoming mail server type.

- 9** In the **Incoming mail server** box type your FQDN, or if you are not using a DNS environment, type the IP address of the CallPilot.

- 10** In the **Outgoing mail server** box type your FQDN, or if you are not using a DNS environment, type the IP address of the CallPilot.

- 11** Click the **Next** button.

The Internet Mail Logon screen appears with the subscriber's IMAP account name displayed.

- 12** In the **Password** box type the subscriber's CallPilot mailbox password.

Do not select the Log on using Secure Password Authentication (SPA) check box.

- 13** Click the **Next** button.

The Internet Connection Wizard - Internet Mail Logon screen appears.

- 14** In the **Account name** box type the subscriber's SMTP/VPIM prefix and mailbox number.

- 15** In the **Password** box type the subscriber's mailbox password.

- 16** Click the **Next** button.

The Internet Connection Wizard - Congratulations screen appears.

- 17** Click the **Finish** button and close the Internet Accounts screen.

A message appears that asks if you want to download folders from the mail server you added.

- 18** Select the **Yes** button to download the folder list for the IMAP account that you just created  
or

select the **No** button if you do not want to download the folder list at this time.

**Tip:** To make changes to your new IMAP account, select the account name and click Properties to display the Properties page.

- 19** Click the **OK** button.

## Configuring an LDAP directory service for Outlook Express or Outlook

- 1 Start Outlook.
- 2 On the **Tools** menu, click **Accounts**.  
The Internet Accounts screen appears.
- 3 Click the **Directory Service** tab.
- 4 Click the **Add** button and click **Directory Service**.  
The Internet Connection Wizard starts.
- 5 In the **Internet directory (LDAP) server** box type the FQDN or IP address of the CallPilot 150 or CallPilot Mini system.  
Do not select the My LDAP server requires me to log on check box.
- 6 Click the **Next** button.  
The Internet Connection Wizard - Check E-mail Addresses screen appears.
- 7 If the subscriber wants to check for addresses in the CallPilot LDAP directory when they address messages, select **Yes**.
- 8 Click the **Next** button.  
The Internet Connection Wizard - Congratulations screen appears.
- 9 Click the **Finish** button.  
The Internet Accounts screen appears.
- 10 Click the **Properties** button, and then click the **Advanced** tab.
- 11 If your network is slow, move the slide bar under **Search timeout** toward **Long** to increase the timeout.
- 12 If the subscriber expects to do directory searches that return more matches than the number shown, increase the number in the **Maximum number of matches to return** box.
- 13 In the **Search base** box type the search base for the CallPilot directory.  
The search base is *ou=users,ou=callpilot*.
- 14 Click the **OK** button.  
The Internet Accounts screen appears again.
- 15 If the subscriber wants to check for addresses in the CallPilot LDAP directory, click the **Set Order** button. The Directory Services Order screen appears. If necessary, use the **Move Up** or **Move Down** buttons to position the CallPilot LDAP directory in the search order.
- 16 Click the **OK** button.  
The Internet Accounts screen appears.
- 17 Click the **Close** button.

## Configuring special settings for Outlook Express or Outlook in Internet Mail mode

- 1 Select the settings for the type of Outlook the subscriber uses.
  - If the subscriber uses Outlook Express:
    - a On the **Tools** menu, click **Options**.  
The Options screen appears.
    - b Click the **Send** tab.
    - c From **Mail sending format**, select **Plain Text**.
    - d Click the **Plain Text Settings** button.  
The Plain Text Settings screen appears.
    - e From **Message format**, select **MIME**.
    - f From the **Encode text using** list box, select **None**.
    - g Click the **OK** button.
    - h Click the **OK** button.
  - If the subscriber uses Outlook 98:
    - a On the **Tools** menu, click **Options**.
    - b Click the **Mail Format** tab.
    - c From **Send in this message format**, select **Plain Text**.
    - d Click the **OK** button.
- 2 If the subscriber has addresses from the CallPilot LDAP directory in their Outlook Express or Outlook 98 personal address book:
  - In the Address Book, right-click the recipient's name.
  - Select **Properties**, and then select the **Name** tab.  
The Properties screen appears.
  - Select the **Send E-Mail using plain text only** check box.
  - Click the OK button.

## Testing the Outlook Express or Outlook in Internet Mail mode IMAP account

- 1 Use your telephone to log on to your CallPilot mailbox.
- 2 Compose a test voice message and send it to the subscriber.
- 3 Have the subscriber check that the message appears in their Inbox.

## Configuring Netscape Messenger 4.x

If the subscriber uses Netscape Messenger version 4.x as their Internet Mail client, use these procedures. If the subscriber uses Netscape Messenger 6.2, refer to [“Configuring Netscape Messenger 6.2” on page 38](#).

### Notes:

- If the subscriber uses Netscape with POP for email, Netscape cannot be configured with IMAP at the same time. You must set up a different Netscape subscriber profile.
- If the subscriber uses Netscape for their email, Netscape cannot be configured to send mail to CallPilot, since only one SMTP server can be configured. You must set up a different Netscape subscriber profile.
- You need Netscape Messenger 4.5 or later. Netscape Messenger versions prior to 4.5 are incompatible with CallPilot Desktop Messaging.

## Configuring an IMAP account on Netscape Messenger

- 1 Start Netscape Messenger.
- 2 On the **Edit** menu, select **Preferences**.
- 3 From the **Mail & Newsgroups** category, select **Identity**.  
The Preferences screen appears.
- 4 In the **Your name** box, type the subscriber's name.
- 5 In the **Email address** box enter the subscriber's email address in the form  
<SMTP/VPIM prefix><mailbox number>@<local CallPilot Mini/CallPilot 150 system>.

For example: 198887002@voiceuser.factor.com, where

- 19888 is the SMTP/VPIM prefix
  - 7002 is the subscriber's CallPilot mailbox number
  - voiceuser.factor.com is the FQDN of the CallPilot Mini/CallPilot 150 system. If your network does not use DNS then use <hostname>.localdomain as the FQDN (where hostname is that of the CallPilot Mini/CallPilot 150 system).
- 6 From the **Mail & Newsgroups** category, select **Mail Servers**.  
The Preferences screen appears.
  - 7 Click the **Add** button.  
The Mail Servers Properties screen appears with the General tab displayed.
  - 8 In the **Server Name** box type the FQDN of the CallPilot Mini/CallPilot 150 system.
  - 9 In the **User Name** box type the part of the subscriber's CallPilot mail address that comes before the @ sign.
  - 10 In the **Check for mail every \_\_\_ minutes** box type how frequently you want Netscape Messenger to check for new messages.
  - 11 Select the **IMAP** tab.

- 12 From **When I delete a message**, select **Mark it as deleted**.
- 13 Select the **Clean up (“Expunge”) Inbox on exit** check box.
- 14 Click the **OK** button.  
You return to the Mail Servers screen.
- 15 In the **Outgoing mail (SMTP) server** box type the FQDN or IP address of the CallPilot Mini/CallPilot 150 system.
- 16 In the **Outgoing mail server user name** box type the FQDN or IP address of the CallPilot Mini/CallPilot 150 system.
- 17 From the **Mail & Newsgroups** category, select **Addressing**.
- 18 From **Pinpoint Addressing**, select both **Address Books** and **Directory Server**.
- 19 From the **Mail & Newsgroups** category, select **Messages**.
- 20 From the **By default, forward messages** list box, select **As Attachment**.
- 21 From **Send messages that use 8-bit characters**, select **Using the “quoted printable” MIME encoding**.
- 22 From the **Mail & Newsgroups** category, select **Copies and Folders**, and make sure all the check boxes are clear.
- 23 From the **Mail & Newsgroups** category, select **Formatting**.
- 24 From **Message formatting**, select **Use the plain text editor to compose messages**.
- 25 From the **Mail & Newsgroups** category, select **Return Receipts**.
- 26 From **If I request a receipt when sending a message, I want**, select **A delivery receipt from the receiving server (DSN)**.
- 27 From **When a receipt arrives**, select **Leave it in my Inbox**.
- 28 Click the **OK** button.

## Configuring an LDAP directory service for Netscape Messenger

- 1 Start Netscape Messenger.
- 2 On the **Communicator** menu, select **Address Book**.  
The Address Book screen appears.
- 3 On the **File** menu, select **New Directory**.  
The Directory Server Property screen appears.
- 4 In the **Description** box, type a descriptive name for the subscriber's CallPilot directory service.
- 5 In the **LDAP server** box, type the FQDN of the CallPilot Mini/CallPilot 150 system.
- 6 In the **Search Root** box, type the search base.  
Use the search base *ou=users,ou=callpilot*
- 7 Click the **OK** button.
- 8 Go to [“Testing the Netscape Messenger IMAP account” on page 39](#) to test the IMAP account.

## Configuring Netscape Messenger 6.2

If the subscriber uses Netscape Messenger version 6.2 as their Internet Mail client, use these procedures. If the subscriber uses Netscape Messenger version 4, refer to [“Configuring Netscape Messenger 4.x” on page 35](#).

### Notes:

- If the subscriber uses Netscape with POP for email, Netscape cannot be configured with IMAP at the same time. You must set up a different Netscape subscriber profile.
- If the subscriber uses Netscape for their email, Netscape cannot be configured to send mail to CallPilot, since only one SMTP server can be configured. You must set up a different Netscape subscriber profile.

## Configuring an IMAP account on Netscape Messenger

- 1 Start Netscape Messenger.
- 2 On the **Tasks** menu, select **Mail & Newsgroups**.  
If there are no email accounts configured the Account Wizard appears. If the Account Wizard appears, go to step 4. Otherwise the Mail & Newsgroups window appears.
- 3 On the **File** menu, select **New** and click **Account**.
- 4 Select ISP or email provider and click the **Next** button.
- 5 In the **Your name** box, type the subscriber's name.
- 6 In the **Email address** box enter the subscriber's email address in the form  
<SMTP/VPIM prefix><mailbox number>@<local CallPilot Mini/CallPilot 150 system>  
For example: 198887002@voiceuser.factor.com, where:
  - 19888 is the SMTP/VPIM prefix
  - 7002 is the subscriber's CallPilot mailbox number
  - voiceuser.factor.com is the FQDN of the CallPilot Mini/CallPilot 150 system. If your network does not use DNS then use <hostname>.localdomain as the FQDN (where hostname is that of the CallPilot Mini/CallPilot 150 system).
- 7 Click the **Next** button.  
The Server Information page appears.
- 8 In the **Incoming Server** section, select **IMAP**.
- 9 In the **Server Name** box type the FQDN of the CallPilot Mini/CallPilot 150 system. If your network does not use DNS enter the IP address (in the form N.N.N.N) instead of the FQDN.
- 10 In the **Outgoing Server (SMTP)** section, in the **Server Name** box type the FQDN of the CallPilot Mini/CallPilot 150 system. If your network does not use DNS, type the IP address instead of the FQDN.
- 11 Click the **Next** button.  
The User Name page shows the subscriber's mailbox number (the part of the subscriber's CallPilot mail address that comes before the @ sign).

- 12 Click the **Next** button.  
The Account Name page appears.
- 13 Type a name for the CallPilot mailbox to help the subscriber to identify it in Netscape Mail.
- 14 Click the **Next** button.  
The Congratulations page appears.
- 15 Verify your CallPilot mailbox information and click the **Finish** button.
- 16 On the **Edit** menu, select **Mail & Newsgroups Account Settings**.
- 17 In the **Server Settings** panel, at select **Check for new messages every 10 minutes** and change it from 10 minutes to 1 minute.
- 18 From the **When I delete a message** setting select **Move it to the Trash folder to Mark it as deleted**.
- 19 Make sure that the **Clean up (“Expunge”) Inbox on Exit** setting is selected.
- 20 In **Copy and Folder Settings** panel, from the **“Sent” folder on:** setting select **Local Folders**.
- 21 From the **“Drafts” folder on:** setting select **Local Folders**.
- 22 From the **“Templates” folder on:** setting select **Local Folders**.
- 23 Click the **OK** button.

## Configuring an LDAP directory service for Netscape Messenger

- 1 On the **Edit** menu, select **Preferences**.
- 2 Double-click **Mail & Newsgroups**.
- 3 In the **Addressing** panel, select **Directory Server**. Click the **Edit Directories** button.  
The LDAP Directory Servers window appears.
- 4 Click the **Add** button.  
The Directory Server Properties window appears.
- 5 In the **Name** box type the FQDN of the CallPilot Mini/CallPilot 150 system. If your network does not use DNS type the IP address (in the form N.N.N.N) instead of the FQDN.
- 6 In the **Hostname** box type the hostname of the CallPilot Mini/CallPilot 150 system, or another unique identifier.
- 7 In the **Base DN** box type the string *ou=users,ou=callpilot* and click the **OK** button.
- 8 Click the **OK** button to close the LDAP Directory Servers window.
- 9 Go to [“Testing the Netscape Messenger IMAP account” on page 39](#) to test the IMAP account.

## Testing the Netscape Messenger IMAP account

- 1 Use your telephone to log on to your CallPilot mailbox.
- 2 Compose a test voice message and send it to the subscriber.
- 3 Have the subscriber check that the message appears in Netscape Messenger.

## Configuring Eudora Pro

To change any part of this configuration after it is complete, on the **Tools** menu click **Options** to display the configuration screens.

### Configuring an IMAP account on Eudora Pro

- 1 Double click the **Eudora Pro** icon.  
The New Account Wizard - Welcome to Eudora Pro! screen appears.
- 2 Click the **Next** button.  
The New Account Wizard - Account Settings screen appears.



**Note:** If you have another IMAP account for your CallPilot mailbox, you can import the settings. This configuration assumes that the Eudora IMAP account is a new configuration.

---

- 3 From **Would you like to**, select **Create a brand new email account**.
- 4 Click the **Next** button.  
The New Account Wizard - Personal Information screen appears.
- 5 In the **Your Name** box, type the subscriber's name.
- 6 Click the **Next** button.  
The New Account Wizard - E-Mail Address screen appears.
- 7 In the **E-Mail Address** box type the subscriber's CallPilot mail address.

Enter the subscriber's email address in the form  
<SMTP/VPIM prefix><mailbox number>@<local CallPilot Mini/CallPilot 150 system>.

For example: 14164067001@voiceuser.factor.com, where:

- 1416406 is the SMTP/VPIM prefix
- 7001 is the subscriber's CallPilot mailbox number
- voiceuser.factor.com is the FQDN of the CallPilot Mini/CallPilot 150 system. If your network does not use DNS, use <hostname>.localdomain as the FQDN (where hostname is that of the CallPilot Mini/CallPilot 150 system).

- 8 Click the **Next** button.  
The New Account Wizard - Logon Name screen appears.
- 9 Check that the **Logon Name** box contains the part of the subscriber's CallPilot mail address that comes after the @ sign, and click the **Next** button.  
The New Account Wizard - Incoming E-Mail Server screen appears.
- 10 Check that the **Incoming Server** box contains the FQDN of the CallPilot Mini/CallPilot 150 system.

- 11** From **Please choose whether the server for your incoming mail uses POP or IMAP**, select **IMAP**, and click the **Next** button.  
The New Account Wizard - IMAP Location Prefix screen appears.
- 12** Click the **Next** button without entering a location prefix.  
The New Account Wizard - Outgoing E-Mail Server screen appears.
- 13** Check that the **Outgoing Server** box contains the FQDN or IP address of the CallPilot Mini/CallPilot 150 system, and then click the **Next** button.
- 14** Click the **Finish** button.
- 15** On the menu bar, on the **Tools** menu click **Options**.
- 16** From the **Category** heading click the **Attachments** icon.  
The Options screen appears.
- 17** From **Encoding method**, select **MIME**.
- 18** From the **Category** heading, click the **Styled Text** icon.
- 19** From the **When sending mail with styled text (HTML)**, select **Send plain text only**.
- 20** Click the **OK** button.  
You return to the main screen.

## Configuring an LDAP directory service for Eudora Pro

- 1 Start Eudora Pro.
- 2 On the **Tools** menu click **Directory Services**.
- 3 From the **Protocols** box, select **LDAP**.
- 4 Click the **New Database** button.  
The Modify Database screen appears.
- 5 Click the **Network** tab.
- 6 In the first box, type a descriptive name for the CallPilot directory service.
- 7 In the **Host Name** box, type the FQDN or the IP address of the CallPilot Mini/CallPilot 150 system.
- 8 Click the **Search Options** tab.
- 9 If your network is slow, move the slide bar under **Search timeout** toward **Long** to increase the timeout.
- 10 In the **Search Base** box type the search base for the CallPilot directory. The search base is *ou=users,ou=callpilot*
- 11 Click the **OK** button.  
You return to the Directory Services screen.

## Testing the Eudora Pro IMAP account

- 1 From your telephone to log on to your CallPilot mailbox.
- 2 Compose a test voice message and send it to the subscriber.
- 3 Have the subscriber check that the message appears in their Eudora Pro client.

---

## Chapter 4

# Troubleshooting

---

This chapter is about:

- [Troubleshooting during installation](#)
- [Troubleshooting log on problems](#)
- [Troubleshooting Outlook 2002 problems](#)
- [Troubleshooting Lotus Notes log on problems](#)
- [Troubleshooting after logging on](#)
- [Accessing Desktop Messaging online Help](#)
- [Using Desktop Messaging Support Tools](#)
- [Using CPTrace](#)

This chapter discusses problems that subscribers can experience with Desktop Messaging. The troubleshooting information is divided into problems and suggested solutions. Based on the expertise of subscribers, you can ask them to do some of the troubleshooting procedures.

If the suggested solution does not correct the problem, contact your Nortel Networks representative.

The problems discussed here apply to all clients unless otherwise noted. Perform the suggested solutions from the desktop computer, or, where noted, on CallPilot 150, CallPilot Mini or CallPilot Manager.

## Troubleshooting during installation

Before you begin to install Desktop Messaging for Microsoft Outlook, GroupWise, or Lotus Notes, you require:

- the subscriber's CallPilot mailbox number
- the fully qualified domain name or IP address of CallPilot 150 or CallPilot Mini
- the SMTP/VPIM prefix of CallPilot 150 or CallPilot Mini



**Note:** Before you install Desktop Messaging, make sure the Integrated Client (Microsoft Outlook, GroupWise, or Lotus Notes) is working properly.

---

## Obtaining the Desktop Messaging version number

- 1 If the subscriber cannot log on, but you require the CallPilot version number, navigate to:  
windows\system\nmdcva.exe
- 2 Right-click the file and select **Properties**.  
The Properties page appears.
- 3 Select the **Version** tab.  
The version number for Desktop Messaging is displayed.

### Microsoft Outlook default mail client

You see the error message when you install Desktop Messaging: “Either Outlook is not the default mail client or there is no default mail client to fulfill the current request.” If Outlook is installed on the subscriber’s computer but they do not want Outlook to be their default mail client, they can change to another client after Desktop Messaging is installed.

To define Outlook as the default mail client:

- 1 Click the Windows **Start** button, point to **Settings** and click **Control Panel**.  
The Control Panel window appears.
- 2 Double-click the **Internet Options** icon.  
The Internet Properties dialog box appears.
- 3 Click the **Programs** tab.
- 4 From the **E-mail** list box, select **Microsoft Outlook**.
- 5 Click the **OK** button.

### No authorization to perform this operation

Subscribers must have Manager or Designer access control of the mail database to install Lotus Notes Desktop Messaging. The Lotus Notes administrator sets this control on the server for each subscriber. The default is Manager access.

To determine the level of access control for a subscriber:

- 1 From the subscriber’s Lotus Notes Mail database, click **File**, click **Database**, and click **Access Control**.
- 2 Click the subscriber’s name in the displayed list.  
The subscriber’s access control level appears in the Access box. The choices are Manager, Designer, Editor, Author, Reader, Depositor, and No Access.  
For a subscriber to install Desktop Messaging, Manager or Designer must be displayed.
- 3 If neither Manager nor Designer is selected:
  - you must temporarily give the subscriber Manager or Designer access
  - or
  - the Lotus Notes administrator must manually update the Mail database from the server for each subscriber who needs CallPilot access

This update creates a new view, CallPilot Desktop Messaging, in Lotus Notes.

To update a CallPilot subscriber Mail database from the server:

- 1 Install CallPilot Desktop Messaging on the Lotus Notes server computer by running **Server, setup.exe**.
- 2 Start **Update database design**.
- 3 To locate the Update database design program, click **Start**, point to **Programs**, point to **Nortel CallPilot Desktop** and click **Update database design**.

- 4 From **Update CallPilot Mail databases**, select **Add CallPilot components** or **Remove CallPilot components**.
- 5 Click **OK**.
- 6 From the **Select database(s)** dialog box, select one or a group of mail files to update.
- 7 Click **OK**.

## Troubleshooting log on problems

### Invalid credentials

The subscriber sees messages such as “Invalid credentials. Please retry” or “The server could not be located. Please Retry.”

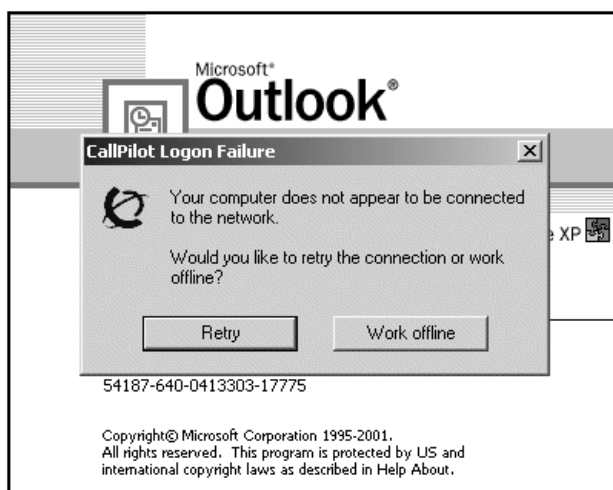
- 1 On the subscriber’s computer, check that Desktop Messaging is configured with the proper settings. Verify that the following information is correct:
  - mailbox number
  - fully qualified domain name (FQDN) or IP address of CallPilot 150 or CallPilot Mini
  - the SMTP/VPIM prefix, if any, of CallPilot 150 or CallPilot Mini
- 2 Check that you can log on from the telephone using the same mailbox number and password.
- 3 Test that you have network connectivity to CallPilot 150 or CallPilot Mini.  
Issue a network command to CallPilot 150 or CallPilot Mini exactly as it appears in your Desktop Messaging configuration. Try to ping using the DOS prompt, and ensure that you receive a valid response from CallPilot 150 or CallPilot Mini. If you do not have network connectivity to CallPilot 150 or CallPilot Mini, you are not able to access Desktop Messaging.

These steps are applicable only in a DNS enabled environment:

- 4 Ensure that DNS is configured on this computer. Under **TCP/IP properties**, click the **DNS** tab. Ensure that a DNS server is listed. Verify that it is the correct IP address for the DNS server.
- 5 Check with the DNS administrator whether the server name is in the DNS server. Verify that the correct hostname is configured in the DNS server.
- 6 Check that the CallPilot FQDN is properly configured in the DNS server.

### CallPilot Logon Failure

The subscriber sees a message that their computer is not connected to the network.



Tell the subscriber to contact their network administrator.

## Troubleshooting Outlook 2002 problems

These are issues with how Desktop Messaging works with Outlook 2002. These issues should be resolved with a future Outlook service release patch from Microsoft.

### Sending messages

When a subscriber who uses Outlook 2002 creates a CallPilot message in the CallPilot window, Outlook does not automatically send the message when the subscriber clicks the Send button. To send the message, the subscriber must click the Send/Receive button on the Outlook toolbar. We recommend subscribers install Outlook SP 1 from Microsoft, which fixes this issue.

### Accessing CallPilot support tools in Outlook 2002

This section describes how to use CallPilot support tools specific to Desktop Messaging for Outlook 2002.

#### To reset the CallPilot Message Store in Outlook 2002

- 1 On the subscriber's computer, press the **Ctrl** and **Shift** keys.
- 2 In Outlook, on the **Tools** menu, click **Send/Receive, Accounts, CallPilot Transport**.
- 3 Continue to press the **Ctrl** and **Shift** keys until the CallPilot Reset Mailbox dialog box appears.
- 4 Click **Reset Mailbox**.

#### To access the Outbox Fix utility in Outlook 2002

- 1 In Outlook, on the **Tools** menu click **E-mail accounts**.  
The E-mail Accounts wizard appears.
- 2 Select **View or change existing e-mail accounts**, and then click **Next**.
- 3 In the e-mail account list, select **CallPilot Desktop Messaging**.
- 4 While you press the **Ctrl** and **Shift** keys, click **Change**.  
The CallPilot Outbox Fix dialog box appears.
- 5 Click **Fix outbox**.

## Troubleshooting Lotus Notes log on problems

When Desktop Messaging is installed, Desktop Messaging appears under Folders and Views. In the Personal Name and Address Book on Local database, two new views are created:

- Groups (CallPilot)
- People (CallPilot)



**Note:** In Lotus Notes 5.0, these views are accessible only from the View menu. In Lotus Notes 5.0 subscribers must log on to CallPilot before they can download the address book.

---

### Subscribers cannot see CallPilot Desktop Messaging

When the subscriber logs on, they do not see Desktop Messaging.

- 1 Verify that the subscriber is in **Folders and Views**.
- 2 If they do not see Desktop Messaging and they are in Folders and Views, ask the subscriber to uninstall the current version of CallPilot, and then reinstall it. When they reinstall, tell them to make sure that when they reach the Ready to Install window they select the Update Lotus Notes databases check box.



**Note:** Even if the subscriber does not select the check box, you can manually update the Mail database design.

Replace the Mail database design only if you have not customized Lotus Notes. If you replace the database design, any customization is removed.

You require Manager or Designer-level access to update the Mail database design.

---

### Replacing the Mail database design

The Lotus Notes administrator can replace the Mail database design from the Lotus Notes server.

To update the Mail database design:

- 1 Copy one of the files into the notes/data directory on the Lotus Notes server:
  - cpmail46.ntf for Lotus Notes 4.6
  - cpmail50.ntf for Lotus Notes 5.0
- 2 Use **File > Database > Open** to add the mail database icon that you are going to update.
- 3 Select this icon.
- 4 Select **File > Database > Replace design**.
- 5 In the **Replace Database Design window**, select the **Show advanced templates** check box.

- 6 Make sure that:
  - the Inherit future design changes check box is selected
  - Hide formulas and LotusScript is not selected
- 7 Select **CallPilot Mail (R4.6)** or **CallPilot Mail (R5.0)**.
- 8 Click **Replace**.
- 9 Press **F9** to refresh the window and display the names.

### **No entries in CallPilot Personal Name and Address Book**

While in the Personal Name and Address Book window, the subscriber selects People (CallPilot) and does not see any entries in the CallPilot Address Book.

Ask the subscriber to download the CallPilot Address Book manually and update the Personal Address Book template.

To manually download the CallPilot Address Book:

- 1 Make sure that Address Book—People (CallPilot) window is the active window.
- 2 On the **Actions** menu, select **Download CallPilot Address Book**.

### **The dynamic link library nNOTES.dll could not be found in the specified path**

- 1 On your desktop, right-click the **Lotus Notes** icon, select **Properties**, and then click the **Shortcut** tab.
- 2 Examine the properties of your Lotus Notes shortcut.
- 3 Verify the path in the **Start in** box.  
**Note:** Usually, when Lotus Notes creates a shortcut, it puts a working directory in this box.
- 4 Add or update the path.

### **You download the CallPilot address book and 0 entries are found**

- 1 Check the **CallPilot Address Book** search base.  
Search base is configured under **Actions > CallPilot Desktop Messaging > CallPilot Desktop Messaging**. Select the **Address Book** tab.
- 2 Verify that the search base is exactly as it is configured on the CallPilot Administration Client.

## Troubleshooting after logging on

### The CallPilot address book is empty

Lotus Notes 5.0 subscribers must log on to CallPilot before they can download the address book.

- 1 Make sure that your **Address Book—People (CallPilot)** window is the active window.
- 2 On the **View** menu, click **Refresh**.
- 3 Make sure the CallPilot Address Book has been downloaded.

Outlook and GroupWise clients:

- 1 Click **Download CallPilot Address Book**.
- 2 If it responds with 0 entries found, verify that the search base is correct.

### The subscriber has message access problems

The subscriber has modified the settings so that they are now correct, but the subscriber still cannot access their messages.

If you modified the settings while Desktop Messaging was open, close and reopen Desktop Messaging so that the settings take effect.

### The subscriber has problems sending messages

When the subscriber sends a message, it arrives in the recipient's Outlook mailbox, but it does not arrive in the CallPilot message mailbox.

- 1 Ensure that when you address the message, you locate the recipient's address in the CallPilot Address Book. If the recipient is defined in your Personal Address Book, then ensure that the Personal Address Book entry is a CallPilot address.
- 2 To ensure that the recipient is defined as a CallPilot Address type, highlight the name, click **Properties**, and verify that the Address Type=CallPilot.
- 3 Before you send the message, in the To field, highlight the Recipient, click **Properties**, and verify that the Address Type=CallPilot.

### Messages remain in the subscriber's Outbox

On Microsoft Outlook, messages remain in the mail client outbox (not the CallPilot Message Store outbox). This problem can be caused by the migration from one server to another while maintaining the same Outlook client.

Remove the Outlook server, then re-add it to the subscriber's profile.

To fix the Outbox:

- 1 On the subscriber's computer, on the **Tools** menu click **Services**.  
The Services dialog box appears.
- 2 Select **CallPilot Desktop Messaging**.
- 3 Press the **Ctrl + Shift** keys, and click **Properties**.  
The CallPilot Outbox Fix dialog box appears.



- 4 Click the **Fix outbox** button.

### The subscriber cannot send messages

The subscriber cannot send messages to AMIS or digital networking subscribers.

- 1 Make sure that the subscriber is addressing the message correctly. Refer the subscriber to “Address Formats” in their online Help.
- 2 Ensure the subscriber has the capability to send messages to AMIS and digital networking subscribers. Security concerns can restrict subscribers from composing messages to these types of subscribers.

### The subscriber cannot send a CallPilot message

The subscriber cannot send a CallPilot message. When the subscriber clicks Send, an error message appears that says, “Error. Failed to send message.”

- Ask the subscriber to check that their mailbox is not full. If their mailbox is full, they cannot send messages until some messages are deleted.
- Ask the subscriber to check the format of the message address. If the FQDN after the @ symbol does not match the FQDN of CallPilot 150 or CallPilot Mini configured to this mailbox, the message is rejected.
- Ask the subscriber to verify that no attachment is empty. An empty attachment causes the entire message to be rejected. Delete the empty attachment and try sending the message again.

Test whether you can ping CallPilot 150 or CallPilot Mini:

- 1 At the DOS prompt, type:  
ping <CallPilot Mini/CallPilot 150 FQDN>
- 2 If the response is “request timed out,” then type:  
ping <CallPilot Mini/CallPilot 150 IP address>

**Note:** If there is a reply, then the CallPilot 150 or CallPilot Mini FQDN has not been properly configured to your Domain Name System (DNS). Contact your DNS administrator for assistance.

- 3 If there is no reply, verify that CallPilot 150 or CallPilot Mini can be reached on your LAN. Contact your IS administrator for help.
- 4 Verify that CallPilot 150 or CallPilot Mini is up and running.

### **Non-delivery notification**

The subscriber receives non-delivery notifications for messages.

- 1 Ask the subscriber to verify that they have a valid attachment type.
- 2 Ask the subscriber to make sure that their mailbox is not full.
- 3 Ask the subscriber to make sure that they are addressing the message correctly. See “Address Formats” in the online Help.
- 4 Ask the subscriber to ensure that they are attaching only VBK or WAV files to your messages. Desktop Messaging does not accept any other file types.
- 5 If the subscriber is sending to a remote location, ask the subscriber to verify that the address is valid and still exists.
- 6 Ensure that the subscriber has the capability to dial the number. Refer to the *CallPilot Manager Set Up and Operation Guide*.
- 7 Verify that the remote server is responding by issuing a network command on CallPilot 150 or CallPilot Mini. Internet Mail clients cannot send or receive WAV files.

### **"Unknown" appears in the Sender field**

In some messages, the subscriber sees a name or phone number in the Sender field. In other messages, the subscriber sees “Unknown.”

If the caller’s phone system has Calling Line ID, CLID information appears in the Sender field for messages that are created when people phone you and you are not available. If CLID information is not provided, it appears as “Unknown.” For messages that are sent from people using Networking, if the sender’s name is not provided to the CallPilot system, the Sender field appears as “Unknown.”

### **The subscriber has problems with receiving replies**

Recipients can see the subscriber's CallPilot messages and people receive the messages that the subscriber sends, but the subscriber does not receive replies to their messages.

- 1 On the **Actions** menu, select **CallPilot Configuration**.
- 2 Click **Properties**.
- 3 Ensure that the SMTP/VPIM prefix is specified correctly.

### **Deleted messages remain in the subscriber's mailbox**

When a subscriber deletes messages using Desktop Messaging, the messages are still in the subscriber's mailbox when they access the mailbox using the telephone.

If the messages that they delete on the desktop are still in a Deleted Items Folder in the CallPilot Message Store, the messages remain in the subscriber's CallPilot mailbox. The subscriber still has these messages when they access them from the telephone. To remove the messages from both mailboxes, the subscriber must permanently delete them from the Deleted Items folder.

### **The subscriber cannot delete messages**

The subscriber cannot delete their messages. When the subscriber tries to delete the messages permanently, the messages remain.

If the subscriber is using Desktop Messaging to delete these messages and they are also logged on to their mailbox from their telephone, they cannot delete messages using Desktop Messaging.

Ask the subscriber to end the telephone mailbox session, and then try to delete the messages from Desktop Messaging.

### **Messages no longer on server**

The subscriber receives the error message: "This message could not be found on the server. Messages must exist on the server in order to be played via the telephone. Use computer to play this file. Port failed."

Voice messages that are saved to the subscriber's computer are no longer in their CallPilot Inbox. The subscriber cannot play these messages from the telephone. To listen to these messages, the subscriber must use computer speakers or headphones.

### **Voice message does not play on telephone**

The subscriber plays a voice message from the telephone. The subscriber answers the telephone when it rings but the message does not play.

- 1 Ask the subscriber to say something like "hello," to initiate message playback.

- 2 Ask the subscriber to check the CallPilot player status bar. If it states Open Pending, hang up the telephone. Click **Computer** on the player, and then click telset playback. The phone rings again.
- 3 Tell the subscriber that if the Status bar still says Open Pending, hang up again and wait three to five minutes and try to play the message again. If this problem continues, contact your Nortel Networks Customer Technical Support.

### **The Message Waiting Indicator is active but there is no new message**

The subscriber's telephone message waiting indicator is activated but there is no new message in the subscriber's Desktop Inbox.

Messages are downloaded from CallPilot 150 and CallPilot Mini with the same frequency as email messages (this applies only to Lotus Notes subscribers).

- 1 To adjust the frequency, on the **File** menu, select **Tools**.
- 2 Click **User Preferences**.
- 3 Click **Mail**.
- 4 Change the **Check for mail every \_\_ minutes** setting.
- 5 If you want to check for mail immediately, on the **Actions** menu, select **Refresh CallPilot Message List**.

## Accessing Desktop Messaging online Help

Desktop Messaging for Microsoft Outlook, Novell GroupWise, and Lotus Notes provides standard Help.



**Note:** To access Internet Mail client Help, on the Messaging Administration menu click Internet Mail Client Administration.

Internet Mail client Help contains Help for the CallPilot interface. Use the manufacturer's online Help for questions about your Internet Mail client.

---

### To access online Help

From Microsoft Outlook:

- From your **Inbox**, on the **Help** menu, select **CallPilot Desktop Messaging Help**.

From Novell GroupWise:

- From your **Inbox**, on the **Help** menu, select **CallPilot Desktop Messaging Help**.

From Lotus Notes:

- From your **Inbox**, on the **Actions** menu, select **CallPilot Help Topics**.

## Using Desktop Messaging Support Tools

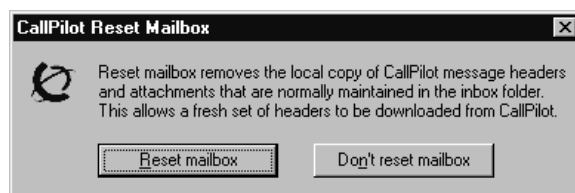
### Resetting the CallPilot message store for Microsoft Outlook

This feature is available only for subscribers who use Microsoft Outlook. Resetting the CallPilot message store removes invalid or corrupt messages from the Inbox.

Lotus Notes and GroupWise clients can reset their mailboxes by choosing the Refresh CallPilot Message List option.

### For Microsoft Outlook 98 and 2000

- 1 Press **Ctrl + Shift**.
- 2 On the **Tools** menu, click **Send and Receive**, and then click **CallPilot Transport**.
- 3 Press **Ctrl + Shift** until the CallPilot Reset Mailbox dialog box appears.



- 4 Select the **Reset Mailbox** button.

All CallPilot messages are purged from the subscriber's mailbox, and the CallPilot message headers that are stored for the subscriber are downloaded again. The messages disappear and then reappear one by one. All message caching is lost.



**Note:** The messages are not deleted from CallPilot. The messages are removed from the client computer cache. Messages are downloaded again from CallPilot 150 and CallPilot Mini to the client computer.

This feature is intended for system administrators and CallPilot product support.

---

## Using CPTrace

You can use CPTrace to collect information about problems with one of the desktop clients that CallPilot runs on. You save this information to a log file that you can analyze to determine the cause of the problem.

Problems you can look for include:

- trouble connecting to CallPilot 150 or CallPilot Mini
- CallPilot player problems
- address book problems
- problems with message compose, reply, forward, delete and notification

To use CPTrace, you must understand Desktop Messaging functionality and the corresponding components on the IMAP server.



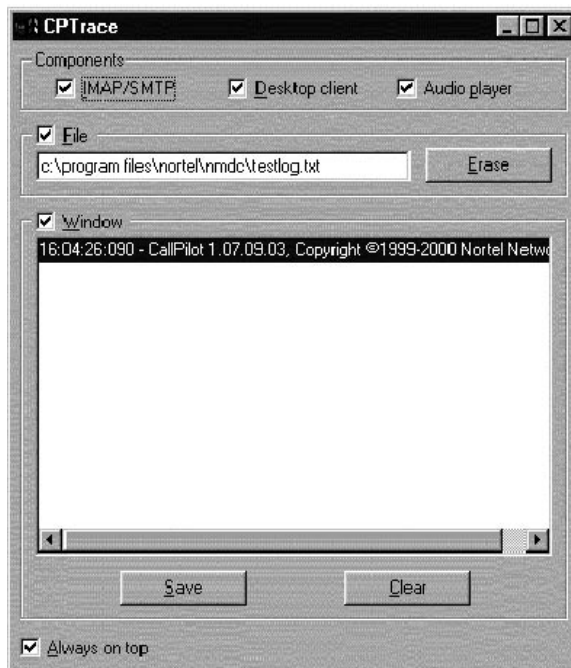
**Note:** Running CPTrace affects how CallPilot works. It is possible that you will not be able to reproduce problems while CPTrace is running.

CPTrace.exe is installed with each desktop client in the \Program Files\Nortel\<client directory>:

- for Microsoft Outlook, in nmde
- for Lotus Notes in nmin
- for GroupWise in nmgw

## Using CPTrace

To use CPTrace, double-click the CPTrace.exe in the corresponding desktop client directory.



## CP Trace settings

The CPTrace settings are stored in the Windows registry. The existing settings are used each time you run CPTrace.

CP Trace settings	
<b>IMAP/SMTP</b>	Logs all IMAP/SMTP traffic
<b>Desktop client</b>	Logs internal Outlook, Lotus Notes and GroupWise traffic
<b>Audio Player</b>	Logs Audio player traffic
<b>File</b>	<p>Writes logs to a file. Check this box and type a file name and extension to maintain the log. You can include a directory path such as c:\my player. When you close CPTrace with the File check box selected, the Desktop client continues to write information to the file selected. This slows down the Desktop operation slightly.</p> <p>The log file never gets larger than 1Mbyte. When the file size reaches 1Mbyte, 10 percent of the file is purged, starting with the oldest data.</p> <p>If you select the File check box and close CPTrace, you receive a warning that File tracing is still enabled and asking if you want to turn off tracing. ClickYes to leave file tracing enabled.</p>
<b>Window</b>	Writes logs to the display window.
<b>Erase</b>	Deletes the log file from the directory you defined for it. A message appears that asks you to confirm the deletion.
<b>Clear</b>	Clears the display window
<b>Save</b>	A Save As dialog box appears that you can use to save the trace to a text file. The default file name is CPTrace.txt. This file is stored in a temporary directory.
<b>Always on top</b>	Check this box to keep the CPTrace tool on top of other windows.

# Index

---

## A

Accessing Help 55

## C

CallPilot Address Book

    setting up in Outlook (Internet mail mode) 24

    setting up in Outlook Express 24

CallPilot Message Store 25

CLAN IP address 31

Configuring

    environments without a DNS 13

    Eudora Pro 40

    GroupWise 25

    IMAP account on Outlook/Express 31

    Internet mail clients 31

    IP address only 13

    LDAP directory service for Outlook/Express 33

    Lotus Notes 27

    Netscape Messenger 35

    Outlook 2000 in Corporate mode 16

    Outlook Express or Outlook (Internet Mail mode)  
    31

    special settings for Outlook Express or Outlook  
    (Internet Mail mode) 34

Corporate mode 8, 16

## D

Desktop Messaging

    about 7

    data network security 11

    hardware requirements 7

    installation time 15

    online Help 55

    optional hardware requirements 7

    related documents 8

    software requirements 8

    supported IMAP Internet clients 8

Desktop Messaging support tools 56

Desktop Messaging version number 43

Domain Name System (DNS) 52

    configuring environments without a DNS 13

## E

Error message, No authorization to perform this  
operation 44

Eudora Pro 8

    configuring 40

    configuring IMAP account 40

    configuring LDAP directory service 42

    testing IMAP account 42

## F

Fully Qualified Domain Name (FQDN) 46

## G

GroupWise

    CallPilot Message Store 25

    configuring 25

## H

Help, accessing 55

## I

IMAP

    configuration 35

    configure settings 12

    server 12

    server name 32

    testing Outlook Express or Outlook (Internet Mail  
mode) IMAP account 34

Installation requirements 15

Installation time 15

Installing Desktop Messaging 17

Integrated clients 8

Internet mail

    configuring clients 31

    configuring Outlook Express or Outlook (Internet  
Mail mode) 31

    configuring special settings for Outlook Express or  
Outlook (Internet Mail mode) 34

    testing Outlook Express or Outlook (Internet Mail  
mode) IMAP account 34

Internet Message Access Protocol. See IMAP 12

IP addresses 13

## L

LDAP

    configure settings 12

    configuring directory services 33

    directory name 33

    directory services 33

    server 12

Lightweight Directory Access Protocol. See LDAP 12

Lotus Notes  
    configuring 27  
    error message 44  
    workspace 28

## M

Message waiting indicator 54  
Microsoft  
    Outlook (Internet mail mode) 8  
    Outlook Express 8  
Microsoft Outlook (Internet mail mode)  
    configuring access to CallPilot Address Book 24  
Microsoft Outlook 2002  
    configuring text formatting options 24  
    specifying e-mail settings 23  
Microsoft Outlook Express  
    configuring access to CallPilot Address Book 24  
My LDAP server requires me to log on 33

## N

Netscape Messenger 8  
    configuring 35  
    configuring IMAP account 35  
    configuring LDAP directory service 37  
    return receipts 36  
    testing IMAP account 39

## O

Online Help  
    Address formats 51  
Outlook 2000 16  
Outlook 98 16  
Outlook Express or Outlook (Internet Mail mode),  
    configuring 31

## R

Related documents 8

## S

Servers  
    IMAP 12  
    LDAP 12  
    SMTP 12  
Simple Mail Transfer Protocol. See SMTP 12  
SMTP  
    server 12  
    server name 32  
SMTP/VPIM 46  
SMTP/VPIM prefix 15, 25, 31, 35, 43

Support tool  
    CPTrace 57  
    reset CallPilot message store for Microsoft Outlook  
        98, 2000 56

## T

Timeout 33  
    Search timeout for Eudora Pro 42  
Troubleshooting  
    after logging on 50  
        Outlook 50  
        Outlook and GroupWise 50  
    Desktop Messaging support tools 56  
    during installation 43  
    logon problems 46  
    obtaining the Desktop Messaging version number  
        43  
    update CallPilot user Mail database (for  
        administrator) 44

## U

Uninstalling earlier version of Desktop Messaging 16

## V

VPIM Networking 12

## W

Windows Messaging 4.0 15, 25