

# **Option 11C/ 11C Mini Installer's Checklist**

**P0941097**

**NOTE: This document is pertinent for Option 11C and Option 11C Mini systems on Release 25.40.**

The **Generic X11 Release 25.40** software for Option 11C and Option 11C Mini systems includes fifteen (15) manufacture installed Performance Enhancement Products (PEPs) applicable to all regions, with one (1) additional PEP applicable to the Japan region only.

PEP #	PRS ID	Description of problem that Patch corrects
MPLR16094	MP15693	(BUG7058 SWD) Swd watchdog timer expired on task tSL1
MPLR16095	MP16797	(BUG7058 SWD) Swd watchdog timer expired on task 0x20020000.
MPLR16157	MP16936	Data Network instability causes system initialization.
MPLR16233	MP17239	Check for 100BaseT DB MAC_CRC_ERROR flag is not correct
MPLR16166	MP17110	ON HOOK DEFAULT PATH does not work with HFD
MPLR16216	MP17264	Acquired M390X sets in a Symposium or Symposium Express environment only allowing one conference or transfer operation. If the problem already exists on a customer site, INI is required after patch is installed. If the patch is installed before the sets are used at all, or during an upgrade, then an INI is not needed.
MPLR16227	MP17486	Occasionally an EDD gives an invalid redundant IP address to ITGL card. Use of pbxLinkShow will show this address. On ITGL2.20.83, occasionally can see error messages printing out by pbxLinkRedundant saying zero connection ID specified. This can cause data corruption on ITGL card, leading to a corrupted IP address.
MPLR16245	MP17503	When an M3903/3904 set is configured as ACD with force answer feature enabled, the warning tone is missing when handset is on hook and the call is force answered.
MPLR16273	MP17507	When a non system park DN is used to park a call on the M3903,4 or 5 sets the display is not updated correctly. The Display reads "Press OK to park call on" and does not provide the user with a number, just the option of pressing OK.
MPLR16272	MP17347	When the NSVC key is pressed on the M3904 and M3905 Ph3 ACD supervisor sets to select the Night Service Select Mode it doesn't display "Day/Nite/Transition mode selected" when the appropriate mode is selected.
MPLR16280	MP16163	When a call from an analog Modem is established or received, after certain time the call is cut off.
MPLR16304	MP17833/ MP17942	Occasionally a firmware download to an M3900 set will fail. With no error code. The set may be unrecoverable. This patch allows the system to note download failure, send abort message, clear and reschedule download. May retry 2 to 3 times, depending on why download failed.
MPLR16208	MP17179	TMDI does not com back up after cold start
MPLR16317	MP17073	When the Call Server and Media Gateway are running in slave mode full call processing is available. If the Call Server fails due to power issues and switches to survival mode the ITG line card cannot establish a link to the ELAN address of the Media Gateway even though the survivable IP address is configured. The IP sets then cannot make calls other than to sets on the same card.

MPLR16324	MP17942	A slowdown condition of firmware download to M3900 sets is seen. Slow download can result in the appearance of IOD51 messages during the firmware download attempts
-----------	---------	---

**JAPAN Only:**

PEP #	PRS ID	Description
MPLR16276	MP17136	Caller from PSTN hears the busy tone when call is on an Analog DID trunk (Japan)

The Option 11C software daughterboard release for Release 25.40 are as follows:

North America (U.S.A. / Canada)	CALA	Asia Pacific	Japan
NTSK11AR R13	NTSK02AR R13	NTSK03AR R13	NTSK15AR R13

The new Option 11C Mini system controller releases are as follows:

North America	CALA	Asia Pacific	Japan
NTSK11ZR R13	NTSK02ZQ R13	NTSK03ZR R13	NTSK15ZR R13

The software version can be identified by the Product Issue of the pre-programmed daughterboard, (or system controller on Option 11C Mini) or PCMCIA card. Product Issue may be determined by locating the label with the product code (i.e. NTSKxxAR, NTSKxxZR, or NTSKxxBR) on either the software box, the software daughterboard, or the PCMCIA card. The Product Issue is the two digit number immediately following the product code. Note that the "xx" in the NTSKxxAR, NTSKxxZR, and NTSKxxBR indicates the region to which the software is released.

# **Option 11C/ 11C Mini Installer's Checklist**

**P0941097**

NOTE: This document is pertinent for Option 11C and Option 11C Mini on R25.40

## **CAUTION**

Ensure that the NTDK20 SSC card is on a **FLAT** surface before installing the Software Daughterboard and Security Device. Ensure that the NTDK97 MSC is on a **FLAT** surface before installing the Security Device.

**DAMAGE MAY RESULT if this is done with the card still in the box!**

### **CAUTION Please read this important message on software upgrades**

**Note:** Nortel Networks recommends that you upgrade the boot code to the latest release when you upgrade the software. The boot code is on the programmed PCMCIA card.

**Please refer to Nortel Networks NTP's for installation instructions.**

**UPGRADE method: Log in to the system and select DL 143. Type UPGRADE to access the Installation Program.**

You cannot use the UPGRADE command to upgrade correctly from Release 22 to 23; 22 to 24; or 23 to 24. The Sysload Method must be used.

**SYSLOAD method:** Toggle the power supply to OFF and then to ON. During the reboot, press Ctrl I to access the Installation Program.

## **NEW - Software daughterboard – NTTK25AA**

The NTTK25AA blank software daughterboard is being introduced due to the component obsolescence of the Intel Flash Memory chip used on NTTK13AA daughterboards. This new daughterboard however; has the same memory capacity as the NTTK13AA containing 48 Meg of flash memory storage split into 32 Meg of program store and 16 Meg of C:Drive. The NTTK25AA card is compatible with X11 Release 25.30 software or higher. This card is not compatible with issues of software earlier than 25.30. The installation of the card is the same as with the NTTK13AA or NTDK81AA. . If you are upgrading from a previous version of software daughtercard, please ensure that you have the latest bootcode from your release 25.30 PCMCIA card. (see Upgrade NTP). The minimum bootrom compatible with the NTTK25AA is NTDK34FA release 07.

As noted below, NTTK13AA will continue to be supported with X11 Release 24.24 to Release 25.40 and higher.

## **Software Daughterboard Compatibility**

The following identifies the existing software daughterboards and the software releases they are compatible with:

<b>Software Daughterboard</b>	<b>Capacity</b>	<b>Introduced on</b>	<b>Compatible with</b>
NTDK21AA	32 Meg	Release 22.08D	Release 22.08D – 23.55
NTDK81AA	40 Meg	Release 23.18	Release 23.18 – 24.24
NTTK13AA	48 Meg	Release 24.24	Release 24.24 – 25.30and higher
NTTK25AA	48 Meg	Release 25.30	Release 25.30 and higher

## **NTDK97 – 11C Mini System Controller**

This controller is designed specifically for the Option 11C Mini which has forced air cooling. DO NOT install this controller in an Option 11C Cabinet (NTAK11) as it will generate excess heat and system damage will result. In addition this controller, when installed in an Option 11C cabinet DOES NOT meet regulatory standards.

## **IP Expansion Connectivity**

### **Upgrading your Option 11, 11E or 11C system to support IP Connectivity**

A minimum software release of X11 Release 25.30 is required to use the new IP daughterboards.

In order to support the software, the software daughterboard, NTTK13AA or NTTK25AA is required on each IP cabinet.

The IP Expansion product requires a minimum vintage of the NTDK20EA SSC card in the main cabinet for Option 11C. Option 11C IP Expansion cabinets require minimum NTDK20CA or later.

Option 11C Mini requires a minimum vintage of the NTDK20EA SSC card in both the main and IP Expansion chassis.

The Option 11C Cabinet refresh is required for cabinets configured with IP daughterboards. Existing cabinets can be easily field upgraded by ordering the **NTDK18AA** cabinet upgrade kit.

IP daughterboards can co-exist with existing Fibre daughterboards thereby providing customers with an easy upgrade solution

## **NTDK97 – Faceplate LED status**

The Link light will be “on” during sysload, then turn “off” after the ethernet interface is enabled (whether ethernet is configured or not) and remain “off” during normal use.

**Before starting make sure you have the following:**

### **11C System**

• NTDK20 SSC Card • Software Daughterboard • Security Device • Keycode Datasheet (see next page for keycode instructions)

### **11C Mini System**

• NTDK97 MSC Card • Security Device • Keycode Datasheet (see next page for keycode instructions)

### **For IP Expansion Systems**

• IP Daughterboard(s) with appropriate cables • IP Expansion Security Device(s) • Grounding Clips

Note: Your IP Expansion Security Device I.D. begins with the number 4xxxxxxx. It is programmed to work with your main cabinet security device. You will also see NT\_REM printed on the device.

**The following guides from the NTP suite will be helpful to complete installation:**

- Option 11C Planning and Installation Guide
- Option 11C Mini Planning and Installation Guide
- Option 11C and 11C Mini Upgrade Procedures Guide
- For IP Expansion installation procedures, refer to the Planning and Installation Guide
- For Survivability configurations, please refer to the Option 11C Survivability Operation and Configuration Guide.

- Set the baud rate for Port 0 of the SSC/MSC card, using the dip switch on the SSC/MSC card faceplate.

**Port 0 is the only SDI port that can be used for software installations and upgrades.**

- After successful install of the system, make sure that Port 0 of SSC/MSC card is configured as a Maintenance Terminal/TTY. This is required for future software upgrades.
- If upgrading from an Option 11E multi-cabinet system that has fibre connection to the expansion cabinets, it is recommended that the keycodes be validated on the main cabinet first before swapping out the expansion cabinets.

## **INSTALL MENU**

If installing Option 11C using a Software Daughterboard for a brand new system or for an upgrade from an Option 11/11E to 11C, select Option 1 (New Install or Option 11/11E Upgrade – From Software Daughterboard). If installing to your 11C Mini system using a Mini System Controller for a brand new system, select Option 1.

If installing using a PCMCIA card, select Option 4 (New system installation – from Software Delivery Card) or Option 2 (System Upgrade) to upgrade an Option 11/11E to Option 11C, or to upgrade software to a new release or issue.

"**Basic Configuration**" database option includes the following items: Directory, Configuration Record, XPECs blocks, Superloops blocks, Patch, Physical Dump Record, IMS TN Table, IMS Links No, Table, Asynch Blocks, CSL Blocks, VAS Blocks, Background TTY Blocks, Background Port ID Blocks, Aries Data Block, SYS PARAMS Block, LAPW Blocks. For a more extensive default data block, please choose "Pre-Configured Data".

## **IMPORTANT KEYCODE INFORMATION:**

**The data you need to enter in the INSTALL MENU is provided on the Keycode Datasheet.**

**If the keycodes are unsuccessful, check the following:**

**-software issue, feature set name, any additional packages, TNs, ISM parameters, security ID, auxiliary ID (the old site ID, if this is an upgrade), and ensure the correct keycodes were entered.**

**All items must match the keycode sheet exactly.**

For an Option 11C Mini system, check that the number of TNs has been entered correctly from the keycode sheet.

When performing a new system installation, please ensure that the default AUX ID matches the AUX ID from the keycode data sheet.

If they still are not successful, then call your Service Representative.

### **SYSTEM UPGRADE FROM Option 11/11E to Option 11C, retaining copper interface**

If you are installing the NTDK26 Backwards Compatible Daughterboard on the SSC card, jumper J7 must be removed prior to installing the card.

### **SYSTEM UPGRADE FROM Option 11 or 11E to Option 11C**

The following two methods can be used to extract customer data from Option 11/11E software cartridge:

- PC with the Option 11/11E data stored in a CCBR file, or
- NTDK30 Database Upgrade Tool

### **SOFTWARE UPGRADE on Option 11C or Option 11C Mini systems**

The following is required: Software on PCMCIA Card and new keycodes; or blank PCMCIA Card and access to Nortel Network's Software Distribution website to download the applicable software.

### **SOFTWARE DOWNLOAD Website**

The Electronic Software Distribution website is available for Option 11C/11C Mini software downloads to your PCMCIA Card. The site is located at: <http://www.nortelnetworks.com> Choose Customer Support – Software Distribution menu. Choose Option 11C/11C Mini from the pulldown product listing found under the 'View by a Product' option at the blue 'Products' banner. You must **log in** first in order to access the software downloads.

Registration is required in order to access this site.

# Meridian 1

## R25 General Release Bulletin - Asia Pacific

(former known as Market Introduction Catalogue)

**(For Asia Pacific's Authorised Distributors internal use only)**

<b>Publication Number:</b>	<b>Issue 1.1</b>
<b>Product Release :</b>	<b>X11 Release 25.40</b>
<b>Date :</b>	<b>6 March 2002</b>
<b>Issued by :</b>	<b>WT Choo</b>
	<b>Meridian 1 Product Management</b>
	<b>Asia Pacific</b>

### IMPORTANT:

**This document contains Nortel Networks proprietary information and is issued for Asia Pacific's Authorised Distributors' internal use only. Not to be released to the public, including past, present or potential customers**

© 2000 Nortel Networks  
All right reserved  
Meridian 1, Meridian, and SL-1 are trademarks of Nortel Networks.

Title to and ownership of Meridian 1 software shall at all times remain with Nortel Networks. Meridian 1 software shall not be sold outright and the use thereof by the customer shall be subject to the parties entering into agreement as specified by Nortel Networks.

Information contained in this document is subject to change. Nortel Networks reserves the right, without notice, to make changes in equipment or programme components as progress in engineering, manufacturing, or technology may warrant.

# Table of Contents

<b>Table of Contents .....</b>	<b>1</b>
<b>1 Introduction .....</b>	<b>3</b>
1.1 Release 25.40 Quick View .....	4
1.1 Release 25.40 Quick View .....	5
1.2 Release 25 Feature Content and MAT/OTM Matrix.....	7
1.3 Release 25 Peripheral Software Downloadable (PSDL) Listing .....	11
<b>2 System Advisements.....</b>	<b>14</b>
2.1 Systems Supported .....	14
2.2 Feature Interactions .....	16
2.3 Real Time Impact of Release 25 .....	17
2.4 System Security.....	18
2.5 Audit routine .....	18
2.6 CallPilot Distributor Web Site for PEPs Identification .....	18
2.7 Symposium Distributor Web Site for PEPs Identification .....	18
2.8 Cross Product Dependency List Information .....	19
2.9 System Management.....	19
2.10 Migration Pathways.....	21
<b>3 Small System Advisements .....</b>	<b>22</b>
3.1 Small System Controller and Memory Requirements .....	22
3.2 Software Delivery.....	23
3.3 Software Conversion .....	24
3.4 Upgrades to Release 25 from Option 11/11E .....	24
3.5 Upgrades to Release 25 for Option 11C.....	24
3.6 Upgrades to Release 25 for Option 11C Mini .....	24
3.7 Basic Configuration Data .....	25
3.8 Use of BKO command in LD 43.....	25
3.9 Backwards Compatible Daughterboard - NTDK26 .....	25
<b>4 Large System Advisements.....</b>	<b>26</b>
4.1 Call Processor Memory Requirements.....	26
4.2 Upgrading to X11 Release 25.40 .....	28
4.3 Software Delivery.....	28
4.4 Call Processor CP PII – 256MB Memory Upgrade - Release 25.40.....	29
4.5 Large System New Global Clock Controller - NTRB53 .....	29
<b>5 Documentation .....</b>	<b>30</b>
5.1 Release 25.40 Documentation Overview.....	30
5.2 Documentation Order Codes.....	31



---

<b>6</b>	<b>Software ISM &amp; Packaging Changes .....</b>	<b>38</b>
6.1	Software ISM .....	38
6.2	Software Packages .....	40
<b>7</b>	<b>Feature Overview .....</b>	<b>43</b>
7.1	Release 25.40 Features Summary .....	43
7.2	Release 25.30 Features Summary .....	51
	<b>Appendix A: Auxiliary Processor Alignment Release 25.40 .....</b>	<b>52</b>
	<b>Appendix B: Electronic Software Distribution .....</b>	<b>55</b>
	<b>Last Page.....</b>	<b>61</b>

---

# 1 Introduction

---

This document provides an overview of the Global features developed for the Meridian 1 Generic X11 Release 25.40 software. It describes the new features and enhancements offered. It also provides an overview and brief descriptions of the features introduced in Release 25.30 since not all regions rolled out Release 25.30. This document contains feature information that is applicable for all supported Meridian 1 system types.

X11 Global Release 25.40 is a multi-purpose release designed to deliver a single global software stream to all markets. Release 25.40 will be supported on new systems as follows:

As of April 2001, the Option 51C is no longer sold as a new system in Asia Pacific.

Upgrades to 25.40 will be offered to existing Opt. 51C systems provided that no hardware upgrades are required.

The default processor for new Option 61C systems in all regions will be the 68060E processor and for Option 81C will be Call Processor PII (256MB) commercial processor.

Release 25.40 Option 81C new systems will ship with Fiber Network Fabric (FNF) and Call Processor PII (CP PII) with 256MB memory as the default configuration.

For Options 51C, 61C, 81 and 81C details on feature installation and operation, and hardware upgrade procedures, refer to the Nortel Networks Publications (NTPs). Also, please refer to the Software Conversion Procedures (553-2001-320) that are included in your NTP shipment prior to loading this software.

For information on Memory calculations, please refer to the Technical Reference Guide for Small Systems or the Meridian 1 Release 25 Planning and Engineering Guide for Large Systems.

Not all features described in this document are offered in all countries, and as noted within the Bulletin, not all features are supported on all machine types.

Please contact your local Nortel Networks sales representative for more information.

**Generic X11 Release 25.40 is supported on:**

- Option 11C and Option 11C Mini.

[Refer to Option 11C/Mini Installer's Checklist Release 25.40 (P0941097) for details of any manufactured PEPs with the GA Release of 25.40]

- Options 51C, 61C, 81 and 81C equipped with the Motorola 68060 (NT5D10) CP3, or 68060E (NT5D03) CP4 commercial processors.
- Options 81C equipped with Call Processor PII commercial processors.

[Refer to Manufacture Delivered Customer Solutions (MDCS) Release 25.40 GRB for details of any mandatory PEPs required for Large Systems if applicable]

**IMPORTANT**

**Please read all included advisements, requirements, and enhancements both common, and pertinent to your machine type prior to loading this software.**

**When references in this document are made to "Release 25", the statements are applicable to Release 25.10, Release 25.15, Release 25.30 and Release 25.40.**

## **1.1 Release 25.40 Quick View**

### **1.1.1 System Management**

Release 25.40 is not supported by MAT, only supported by OTM 1.2 or higher.

### **1.1.2 Software Delivery**

Release 25.40 uses the same software delivery vehicles as all other issues of Release 25.

Refer to Appendix B, “Electronic Software Distribution (ESD)” for the new electronic software download website.

### **1.1.3 Software Migration Pathway**

Release 25.40 supports same migration paths as Release 25.30, 25.15 and Release 25.10.

### **1.1.4 Memory Requirements**

Release 25.40 Small systems memory requirements are the same as all other issues of Release 25.

A new blank software daughterboard NTKK25AA is being introduced in Sept. 01 and both NTKK25AA and NTKK13AA are supported on Release 25.40.

Release 25.40 Option 51C-81C memory requirements are the same as Release 25.15 & 25.30; Release 25.40 introduced Memory upgrade for Option 81C CP PII to 256MB, that is mandatory for all 81C CP PII machines with six or more groups. New 81C systems will ship with CP PII with 256MB memory.

### **1.1.5 Supported Machine types**

Release 25.40 is supported by the same machine type as Release 25.15 & 25.30; however Option 51C is no longer sold as a new system.

### **1.1.6 PE/EPE Support**

Release 25.40 supports the same PE/EPE equipment as all other issues of Release 25

### **1.1.7 New ISM and software Packages**

Release 25.40 introduced six new Software Packages and one new ISM. Refer to (Software ISM & Packages changes) section of this Bulletin for details.

### **1.1.8 Documentation changes for Release 25.40**

Meridian documentation suite has been updated to include Release 25.40 new features.

Additional restructure and quality enhancements of the suite will include the introduction of new binders, merging and discontinuing of some documents.

A cross-reference chart of discontinued books as well as merged content will be generated to help users understand the changes.

Refer to the Documentation section of this bulletin for details.

## 1.2 Release 25 Feature Content and MAT/OTM Matrix

Feature/Product	11C Mini	11C	51C	61C	81	81C	25.10	25.15	25.30	25.40	MAT/OTM Mandatory Requirement
<b>System Features &amp; Processor, Memory and Clock Enhancements</b>											
Fiber Network Fabric (FNF)					X	X		X	X	X	No
Call Processor PII (CP PII)						X		X	X	X	No
Inventory Reporting Phase 2	X	X	X	X	X	X	X	X	X	X	No
Option 11C/11C Mini IP Expansion	X	X							X	X	No <sup>2,3</sup>
Scheduled Electronic Lock	X	X	X	X	X	X			X	X	No
Attendant Announcement	X	X	X	X	X	X				X	No
ACD DN Expansion <sup>6</sup>						X				X	No
MISP & DPNSS Support for IP Expansion <sup>9</sup>	X	X								X	No
Autonegotiation on IP Expansion	X	X								X	No
CP PII Memory Enhancement Option 81C (256MB)						X				X	No
Large System New Clock Controller (NTRB53AA)			X	X	X	X	X	X	X	X <sup>5</sup>	No

Feature/Product	11C Mini	11C	51C	61C	81	81C	25.10	25.15	25.30	25.40	MAT/OTM Mandatory Requirement
<b>Networking and Internet Telephony Gateway</b>											
Internet Telephony Gateway ITG Trunks 2.0	X	X	X	X	X	X	X	X	X	X	6.67.04 /1.0 or higher
D-Channel Expansion					X	X	X	X	X	X	No
Private to Public CLID Conversion	X	X	X	X	X	X	X	X	X	X	No
<b>ISDN &amp; QSIG Enhancements and Regulatory requirements</b>											
QSIG Message Waiting Indication	X	X	X	X	X	X				X	No
QSIG Enhancements	X	X	X	X	X	X				X	No
Agent Greeting	X	X	X	X	X	X		X	X	X	No

Feature/Product	11 C MINI	11C	51C	61C	81	81C	25.10	25.15	25.30	25.40	MAT/OTM Mandatory Requirement
<b>Desktop and IP Telephone</b>											
M3900 Enhancements (Release 25.10)	X	X	X	X	X	X	X <sup>1</sup>	X	X	X	No
M3900 – Corporate Directory	X	X	X	X	X	X		X	X	X	6.67.07 /1.0 or higher
M3900 – Virtual Office	X	X	X	X	X	X		X	X	X	No
ITG Line-Side 2.0 & i2004 Internet Telephone	X	X	X	X	X	X			X <sup>4</sup>	X	6.67.07 /1.0 <sup>2</sup>
ITG Line-Side 2.2& i2050 Soft Phone <sup>8</sup>	X	X	X	X	X	X				X <sup>8</sup>	OTM 1.2
M3900 Productivity Enhancement <sup>7</sup>	X	X	X	X	X	X				X	No
M3900 Virtual Office Enhancement <sup>7</sup>	X	X	X	X	X	X				X	No
M3904 Full Duplex Handsfree (FDHF) <sup>7</sup>	X	X	X	X	X	X				X	No
M3900 Phase III Enhancement <sup>7</sup> (Release 25.40)	X	X	X	X	X	X				X	No
<b>Infrastructure, Tools and Keycode Enhancements</b>											
Dynamic PSDL Partitioning (DPSDL)	X	X	X	X	X	X				X	No
PDT Password Enhancement	X	X	X	X	X	X				X	No
PDT Access Log Enhancement	X	X	X	X	X	X				X	No
Keycode Enhancement	X	X	X	X	X	X				X	No



Feature/Product	11 C MINI	11C	51C	61C	81	81C	25.10	25.15	25.30	25.40	MAT/OTM Mandatory Requirement
<b>Features Enhancements (Not Applicable all regions)</b>											
<b>Business Network Express</b>	X	X	X	X	X	X		X	X	X	No
<b>MDECT 2000 MSMN</b>	X	X	X	X	X	X	X	X	X	X	No
<b>CLID on Analog Trunks (Hong Kong only)</b>	X	X	X	X	X	X	X	X	X	X	No
<b>New Wireless Visitor ISM</b>	X	X	X	X	X	X				X	No
<b>Singapore ISDN Enhancement (Singapore only)</b>	X	X	X	X	X	X				X	No
<b>SDID number as CLID for EISDN</b>	X	X	X	X	X	X				X	No
<b>Network Break-in And Force Disconnect</b>	X	X	X	X	X	X				X	No

## Notes:

1. M3900 Enhanced Flash Download requires:  
Release 25.10 Plus MDCS or Manufacture Patches OR Release 25.15 or higher.
2. The OTM 1.01 upissue or MAT 6.67 update disk (ITGL content) is required to support Internet Telephony Gateway Line-Side ITGL in Expansion cabinet in survival mode with Option11C/Mini IP Expansion.
3. OTM 1.2 is supporting Release 25.40 features; **MAT is NOT supported on Release 25.40 or later**  
MAT 6.67.07 plus update disk or OTM 1.0 upissue (1.01) is required to support ITG in expansion Cabinet with Release 25.30.
4. i2004 Internet Telephone requires :  
Release 25.15 Plus Patches, Release 25.30 Plus MDCS or Release 25.40
5. New Large System Clock Controller NTRB53 requires Release 25.40 in order to download New Firmware, Existing clocks continue to be supported on Release 25.40, and the new clock controller NTRB53 is backward compatible with Releases 19 to 25. New Clock H/W will not be available until Q2 2002. Please look for Product Bulletins announcing H/W availability
6. Requires Option 81C with CP PII, Applications may require updating in order to account for additional ACD DN's
7. Refer to M3900 Phase III Product Bulletin for details of Release 25.40 M3900 Enhancements.
8. ITG Line-Side 2.2& i2050 Soft phone will be available no earlier than March 6, 2002. A specific market notice will be sent out to confirm availability.
9. MISP and DPNSS support for IP expansion will be on control release with the introduction of Release 25.40

### 1.3 Release 25 Peripheral Software Downloadable (PSDL) Listing

Loadware	Release 25.10 Small / Large PSWV 19/36	RELEASE 25.15 SMALL / LARGE PSWV 33/38	Release 25.30 Small / Large PSWV 53/70	Release 25.40 Small / Large PSWV 77/77
LCRI	LOADAA02	LOADAA02	LOADAA02	LOADAA02
XNET	LOADAC23	LOADAC23	LOADAC23	LOADAC23
XPEC	LOADAC35	LOADAC35	LOADAC38	LOADAC38
FNET	LOADAA06	LOADAA06	LOADAA06	LOADAA06
FPEC	LOADAA07	LOADAA07	LOADAA07	LOADAA07
MSDL	LOADAJ70	LOADAJ70	LOADAJ70	LOADAJ71
ASYN	LOADAH50	LOADAH50	LOADAH50	LOADAH51
DCH1	LOADAJ70	LOADAJ70	LOADAJ70	LOADAJ71
MLNK	LOADAK80	LOADAK80	LOADAK80	LOADAK81
BRIL	LOADAK81	LOADAK81	LOADAK81	LOADAK82
BRIT	LOADAK80	LOADAK80	LOADAK80	LOADAK81
MISP	LOADAJ70	LOADAJ70	LOADAJ70	LOADAJ71
MPHA	LOADAH50	LOADAH50	LOADAH50	LOADAH51
BRSC	LOADAJ70	LOADAJ70	LOADAJ70	LOADAJ71
BBRI	LOADAH52	LOADAH52	LOADAH52	LOADAH53
PUPE	LOADAK80	LOADAK80	LOADAK80	LOADAK82
BRIE	LOADAK81	LOADAK81	LOADAK81	LOADAK82
ISIG	LOADAA31	LOADAA31	LOADAA31	LOADAA32
SWE1	LOADBA49	LOADBA49	LOADBA49	LOADBA49
UKG1	LOADBA46	LOADBA46	LOADBA46	LOADBA46
AUS1	LOADBA46	LOADBA46	LOADBA46	LOADBA46
DEN1	LOADBA46	LOADBA46	LOADBA46	LOADBA46
FIN1	LOADBA46	LOADBA46	LOADBA46	LOADBA46
GER1	LOADBA50	LOADBA50	LOADBA50	LOADBA50
ITA1	LOADBA46	LOADAA49	LOADAA49	LOADAA50
NOR1	LOADBA46	LOADBA46	LOADBA46	LOADBA46
POR1	LOADBA46	LOADBA46	LOADBA46	LOADBA46
DUT1	LOADBA46	LOADBA46	LOADBA46	LOADBA46
EIR1	LOADBA46	LOADBA46	LOADBA46	LOADBA46
SWI1	LOADBA51	LOADBA51	LOADBA51	LOADBA51
BEL1	LOADBA46	LOADBA46	LOADBA46	LOADBA46

<b>Loadware</b>	<b>Release 25.10 Small/Large PSWV 19/36</b>	<b>Release 25.15 Small/Large PSWV 33/38</b>	<b>Release 25.30 Small/Large PSWV 53/70</b>	<b>Release 25.40 Small/Large PSWV 77/77</b>
SPA1	LOADBA46	LOADBA46	LOADBA46	LOADBA46
NET1	LOADBA48	LOADBA48	LOADBA48	LOADBA48
FRA1	LOADBA49	LOADBA49	LOADBA49	LOADBA49
CIS1	LOADBA46	LOADBA46	LOADBA46	LOADBA46
ETSI	LOADBA47	LOADBA47	LOADBA47	LOADBA47
E403	LOADBA07	LOADBA07	LOADBA07	LOADBA07
N403	LOADBA05	LOADBA05	LOADBA05	LOADBA05
JTTC	LOADAC08	LOADAC08	LOADAC08	LOADAC08
TCNZ	LOADAA13	LOADAA13	LOADAA13	LOADAA13
AUBR	LOADAA13	LOADAA13	LOADAA13	LOADAA13
AUPR	LOADAA04	LOADAA04	LOADAA04	LOADAA04
HKBR	LOADAA06	LOADAA06	LOADAA06	LOADAA06
HKPR	LOADAA08	LOADAA08	LOADAA08	LOADAA08
SING	LOADAA14	LOADAA14	LOADAA14	LOADAA15
THAI	LOADAA07	LOADAA07	LOADAA07	LOADAA07
NI02	LOADAB17	LOADAB17	LOADAB17	LOADAA21
T1IS	LOADAA09	LOADAA09	LOADAA09	LOADAA10
T1ES	LOADAA09	LOADAA09	LOADAA09	LOADAA09
ESGF	LOADAA19	LOADAC20	LOADAC20	LOADAC22
ISGF	LOADAA17	LOADAC18	LOADAC18	LOADAC20
TEGF	LOADAA18	LOADAC19	LOADAC19	LOADAC22
TIGF	LOADAA16	LOADAC17	LOADAC17	LOADAC19
INDO	LOADAA06	LOADAA06	LOADAA06	LOADAA06
JAPN	LOADAA15	LOADAA15	LOADAA15	LOADAA15
MSIA	LOADAA04	LOADAA04	LOADAA04	LOADAA04
CHNA	LOADAA03	LOADAA03	LOADAA03	LOADAA04
INDI	LOADAA03	LOADAA03	LOADAA03	LOADAA03
PHLP	LOADAA02	LOADAA02	LOADAA02	LOADAA02
TAIW	LOADAA03	LOADAA03	LOADAA03	LOADAA03
EAUS	LOADAA01	LOADAA01	LOADAA02	LOADAA02
EGF4	LOADAA04	LOADAC05	LOADAC05	LOADAC07
DCH3	LOADAA09	LOADAA09	LOADAA09	LOADAA09
PUP3	LOADAA09	LOADAA09	LOADAA09	LOADAA09
T1E1	LOADAA11/15	LOADAA11/15	LOADAA11/15	LOADAA15
DITI	LOADAA33/34	LOADAA33/34	LOADAA33/34	LOADAA34
CLKC New Global Large System Clock [NTRB53]	NA	NA	NA	LOADAA06

<b>Loadware</b>	<b>Release 25.10 Small/Large PSWV 19/36</b>	<b>Release 25.15 Small/Large PSWV 38/33</b>	<b>Release 25.30 Small/Large PSWV 53/70</b>	<b>Release 25.40 Small/Large PSWV 77/77</b>
<b>M3900 Loadware</b>	M3900 Phase II (M3905 Phase I)	M3900 Phase II (M3905 Phase I)	M3900 Phase II (M3905 Phase I)	M3900 Phase III
<b>N.A./Global Languages Set:</b>				
M3902	LOADAA36	LOADAA40	LOADAA40	LOADAA80
M3903	LOADAA45	LOADAA51	LOADAA52	LOADAA80
M3904	LOADAA41	LOADAA46	LOADAA46	LOADAA83
M3905	LOADAA27	LOADAA32	LOADAA32	LOADAA82

---

## 2 System Advisements

---

In this document, Small Systems refer to the Option 11C and Option 11C Mini. Large Systems refer to the Option 51C, 61C, 81 and 81C machine types. System Advisements are applicable to all System Types.

Where references are made to Release 25, the statements are applicable to Release 25.10, 25.15, 25.30 and 25.40.

### 2.1 Systems Supported

Generic X11 Release 25 supports the following machine types:

- Meridian 1 Option 11C
- Meridian 1 Option 11C Mini
- Meridian 1 Option 51C<sup>\*</sup>, 61C, 81 and 81C
- Meridian 1 Option 81C equipped with Call processor PII

Note<sup>\*</sup>: Option 51C is no longer sold as a new system, however software-only upgrades to Release 25.40 will be offered to existing Option 51C systems.

#### 2.1.1 PE and EPE Support

##### X11 Release 25.40

##### CP3 (68060) and CP4 (68060E)

Release 25.40 supports the same PE/EPE equipment as all other issues of Release 25 (i.e. Releases 25.10, 25.15, 25.30) and the same as Release 24.25.

A very limited number of sites running release 25.10 have experienced sporadic digital set operation when combined with older PE and EPE hardware. This issue is related to the occasional loss of system messages between the CPU and the set. Release 25.15 and later contains a Message Buffering solution to address this issue.

PE and EPE hardware will be supported on X11 Release 25 subject to the following guidelines and limitations.

- CP3 (68060) and CP4 (68060E) Systems - EPE supported subject to guidelines listed below.
- CP PII (Pentium®) System does not support PE or EPE cards.

---

## System Upgrade - CP3, CP4 - Guidelines

Due to differences in processing speeds of the CP3 and CP4 processors and EPE hardware, there are certain Customer Data Configurations that may be susceptible to performance degradation of Telephone sets connected to EPE. These are:

- Having the same Multiple Appearance Directory Number (MADN) on Telephones connected to the same Digital Line Card (DLC).
- Group Call configurations where the target sets are on the same Digital Line Card.
- Calling Party Name Display- longer names increase the potential for problems.
- Numbering schemes where Directory Number Expansion is used.

To ensure optimum performance, the above configurations should be avoided. In the event that this is not possible or practical, Nortel Networks advises that the EPE be migrated to IPE prior to upgrading to Release 25.

## System Upgrade - CP PII

For upgrades to the CP PII processor platform, EPE cards will **not** be supported and will need to be migrated to IPE hardware. This refers to cards that plug into PE and EPE shelves (cards that have 1 1/2" spacing). Some telephone sets, such as SL1 sets (QSUXXX), may have to be replaced in this migration. Cards in the network shelves will continue to be supported. Connections from Networking Equipment to Meridian Mail and Digital Trunk/Primary Rate Interface are therefore not impacted by this requirement and remain supported in this configuration.

## X11 Release 26 (when available)

The introduction of this release will no longer support Peripheral Equipment (PE) or Enhanced Peripheral Equipment (EPE) on any Meridian 1 system type.

### PE or EPE includes the following:

1. All Peripheral Equipment/Enhanced Peripheral Equipment housed in old style Peripheral Equipment/Enhanced Peripheral Equipment shelves and
2. SL-1 proprietary telephone sets and attendant consoles associated with SL-1 line cards.

**Note 1:** "QPC" cards housed in CORE/Network shelves will continue to be supported on Release 26. For example, QPC 414 ENET cards will continue to be supported as an interface to Meridian Mail and Digital Trunk Interfaces (DTI) connection even though the card can no longer be used to drive Enhanced Peripheral Equipment (EPE) shelves.

**Note 2:** In order to allow our customers and distributors the ability to optimize resources during a system or software upgrade, Nortel Networks has not introduced

any changes in X11 Release 26 to prohibit PE and EPE equipment. When a system is upgraded to X11 Release 26, the craftsperson can convert the desktop Terminal Number (TN) to the X11 Release 26 feature set. This eliminates the need to change the TN features and Services twice. Following the TN changes, the new IP shelf can be exchanged and the new desktop equipment installed and tested.

A list of the specific hardware that is impacted with the introduction of X11 Release 26 can be found in AP Product Management Product Bulletin, AP PM 2000-41, "Peripheral Equipment (PE) / Enhanced Peripheral Equipment (EPE) Retirement Notification with Generic X11 Release 26".

## 2.2 Feature Interactions

Microcellular features (packages 345, 346, 314, 302, 303) are not supported on any Release 25 based and later systems.

SILC and UILC cards were not supported in Option 11C/Mini IP Expansion (IPEX) cabinet for Release 25.30, but are supported with Release 25.40.

Meridian Home Office MHO-II is supported with Release 25.40, but not supported with M3900 Phase III

Remote Office (RO) 1.3 is supported with Release 25.40 but not supported with M3900 Phase III until the upissue 1.3.4 is available.

Release 25.40	M2000	M3900 Phase II [3902,3903,3904]	M3900 Phase III [3902,3903,3904,3905]
Remote Office [RO 1.2]	Supported	Supported	Not supported, continue to use M3900 Phase II or upgrade to RO 1.3.4 when available
Remote Office [RO 1.3.1]	Supported	Supported	Not supported, continue to use M3900 Phase II or upgrade to RO 1.3.4 when available
Remote Office [RO 1.3.4]	Supported	Supported	Supported

Support for telephone sets and the different versions of Remote Office (RO) and Release 25.40 as per the table above.

Remote Office 1.3.4 is a maintenance up-issue to provide full M3900 Phase III compatibility and General availability for Remote Office 1.3.4 will be early March 2002.

## 2.3 Real Time Impact of Release 25

The real time impact of Release 25 is shown in the following table. These values are based on the average basic calls measurements in combination with the real time impact on some basic market models which make extensive use of key features, such as CPND, CDR, digital trunking and digital sets.

Machine type	Release 24 to 25
11C	6%
CP3: (51C/61C/81/81C)	6%
CP4: (51C/61C/81/81C)	6%

CP4 to CP PII improvement in real time capacity	
CP4 to CP PII: (Option 81C)	210% (= 3.1X)

## Recommended Call Register Counts

The following tables detail the recommended Maximum Call Register Counts for Release 25 Call Registers as set out in LD 17, at the “NCR” prompt, after answering “Yes” to the PARM prompt

	11C	51C (CP3 & CP4)	61C (CP3 & CP4)
<b>Recommended Call Register Count</b>	1750	2000	4000

	81/81C (CP3 & CP4)	81C CP PII With 5 or fewer groups	81C CP PII With 6 to 8 groups
<b>Recommended Call Register Count</b>	10000	20000	25000



## **2.4 System Security**

Nortel Networks strongly recommends changing the default system passwords for Meridian 1, Meridian Mail and CallPilot systems during initial installation. These passwords should be changed again when the system is placed in active service. These actions will help deter unauthorized system access which can result in toll fraud or system abuse.

For more information, please refer to the System Security Management NTP [553-3001-302].

## **2.5 Audit routine**

As in the case of previous software releases, it is recommended that the Audit routine (Overlay 44) be specified as the background diagnostic to optimize the system capability to deal with call processing anomalies, especially in large line size and high traffic configurations.

## **2.6 CallPilot Distributor Web Site for PEPs Identification**

Please check on the CallPilot distributor web site for current information on any required PEPs for any given X11 software release.

The web site is at: <https://www21.nortelnetworks.com/MPL>

Please note that this site requires an account and password. If you do not currently have an account and password, and are a CallPilot distributor, please contact your regional sales representative for access to this site.

## **2.7 Symposium Distributor Web Site for PEPs Identification**

Symposium Call Center Server SCCS have all the latest PEPs installed on it from the factory as per details on the SCCS Web Page:

<http://www.nortel-sccs.com/sccs.asp>

---

## 2.8 Cross Product Dependency List Information

The Meridian PEP Library now offers a new tool to allow quick identification of PEPs that may be recommended for a particular Application running on a specific Release of X11 software. This Dependency List information has been available on Web MPL for Symposium, CallPilot and Symposium Express since early 2001. X11 Release 25.40 will see the launch of several new Dependency Lists for Feature Groups such as Networking and IP.

The website address for WebMPL access is:

<https://www21.nortelnetworks.com/MPL>

Access to the Meridian PEP Library does require a Distributor account and a password.

## 2.9 System Management

Customers that utilize third party management systems must ensure that the Management System is compatible with Release 25 software.

### **MAT 6.6X**

MAT Release 6.67.04 supports Generic X11 Release 25.10 and associated features;

MAT Release 6.67.07 supports Generic X11 Release 25.15 and associated features.

MAT Release 6.67.07 plus update disk supports Generic X11 Release 25.30 and associated features

<p>MAT is not supported on Release 25.40 or later, Please contact your sales representative for more information related to upgrade to OTM.</p>
---

To confirm your MAT Release version, open MAT on your PC, in the MAT Navigator Window under Help, select About MAT Application.

For further information on MAT 6.67 please refer to the MAT specific General Release Bulletin, which will be shipped with each MAT order.

### **OTM 1.x**

OTM 1.00 supports Generic X11 Release 25.15 and associated features

OTM 1.01 supports Generic X11 Release 25.30 and associated features

OTM 1.1 delivers additional functionality to manage the Survivable IP Expansion cabinets in the areas of Common Services and Maintenance in both the Windows and Web environment.

OTM 1.2 supports Generic X11 Release 25.40 and associated features.

The following X11 Release 25 Features require MAT 6.6x or OTM 1.0x for configuration - the features cannot be programmed through overlays:

- **ITG Trunks 2.0 with ISDN** - the configuration and maintenance of the IP Telephony Gateway (ITG) card is through the "ITG ISDN Trunks" application in MAT 6.67.04 or later or OTM 1.0.
- **Corporate Directory functionality** (one of the M3900 Digital Telephone Enhancements) - the configuration and maintenance of Corporate Directory requires MAT 6.67.07 or OTM 1.0. For existing MAT 6.67.04 sites, and up-issue to MAT 6.67.07 is required for Corporate Directory.
- **ITG Line Side & i2004 Internet Telephones** - the configuration and maintenance of the IP Telephony Gateway (ITG) IPE card is through the "ITG IP Phones" application in MAT 6.67.07 or OTM 1.0.
- **Option 11C/Mini IP Expansion** - MAT 6.67.07 Plus update disk or MAT 1.01 is required to support ITGL card in the Expansion cabinet in survival mode.

**Note:**

OTM 1.01 (Optivity Telephony Manager for Meridian) is a system management software product that provides a single point of connectivity to multiple Meridian 1 voice switches, Meridian Mail systems, and other applications.

- OTM supports connectivity over serial, dialup/PPP, or Ethernet.

For more information about OTM 1.x, Release 25 Features that Require System Management please refer to the OTM 1.01, OTM 1.1 and OTM 1.2 General Release Bulletin when available.

## **2.10 Migration Pathways**

### **2.10.1 Software Conversion**

For Options 51C, 61C, 81, 81C, and 81C with CP PII direct software conversion is supported to X11 Release 25 from the following releases:

- X11 Release 19, 20, 21, 22, 23, 24

For Option 11C, automatic conversion is supported directly to X11 Release 25 from the following releases:

- X11 Release 16, 18, 20, 21, 22, 23, 24

For Option 11C Mini, automatic conversion is supported directly to X11 Release 25 from the following release:

- X11 Release 24

For more information on software conversion; refer to Upgrade and Conversion Procedures Document NTP [553-2001-320].

### **2.10.2 M3900 Digital Telephone Enhancements**

The M3900 Digital Telephones have a Flash Memory download capability that allows downloading a new firmware version from the Meridian 1 to the M3900 telephone.

Firmware migration is supported using Flash download from:

Phase 1 M3900 sets (X11 Release 24), to Phase 3 (Release 25.40).

Phase 2 M3900 sets (X11 Release 25.10, 25.15 and 25.30) to Phase 3 (Release 25.40).

Additional migration information related to M3900 Series Enhancements can be found in M3900 Digital Telephone Phase 3 Product Bulletins.

---

## 3 Small System Advisements

---

The following advisements are for small systems (Option 11C and 11C Mini) only.

### 3.1 Small System Controller and Memory Requirements

#### 3.1.1 Option 11C Mini

The Option 11C Mini comes with 48Mb Total Memory (32 Mb Program Store and 16 Mb C-Drive space) on the Mini System Controller in order to run Release 25 software. The supported Release 25 System Controller card for Option 11C Mini:

- NTDK97AB or NTDK97AC (48 Meg - no memory upgrade needed) Mini System Controller (MSC)
- NTDK20EA or higher Small System Controller (SSC) for Option 11C Mini main and IP Expansion chassis when using IP Expansion.(25.30)

Please ensure that you have upgraded the bootcode on the MSC to NTDK34FA Rel 06 or higher.

Refer to NTP Upgrades Guide - Chapter 15 Use the flash boot ROM utility.

#### 3.1.2 Option 11C

##### Software Daughter Board Requirements

The Option 11C requires a 48Mb Total Memory (32 Mb Program Store and 16 Mb C-Drive space) in order to run Release 25 Software. This requirement is met with the NTTK13AA or NTTK25AA blank Software Daughterboards.

New orders will receive the new NTTK25AA blank software daughterboard. This card is applicable for software Release 25.30 or higher.

A system upgrading to Release 25 must replace its NTDK21 (32 Mb) or NTDK81 (40 Mb) based software daughterboard, with an NTTK13AA or NTTK25AA (48 Mb) daughterboard.

Please ensure that you have upgraded the bootcode on the SSC prior to upgrading the software daughterboard. To verify the size of the software daughterboard and for installation instructions, refer to NTP upgrade manual Chapter 9.

## **System Controller Card Requirements**

The supported Release 25 System Controller card for Option 11C:

- NTDK20CA or higher Small System Controller (SSC)
- NTDK20EA or higher Small System Controller (SSC) for Option 11C main cabinet when using IP Expansion and NTDK20CA or higher for each Expansion cabinet.(Release 25.30 or later)

An existing Option 11C system equipped with a controller card NTDK20AB can be upgraded to an NTDK20CA with a field upgrade kit NTDK19AA.

As of October 2001, the controller card provided will be NTDK20FA

## **3.2 Software Delivery**

### **3.2.1 Option 11C Mini**

- Pre-Programmed Mini System Controller (MSC) for new systems
- PCMCIA Card for upgrades
- Electronic Software Distribution (ESD)\*

### **3.2.2 Option 11C**

- Software daughterboard for new systems
- PCMCIA card for upgrades
- Electronic Software Distribution (ESD)\*

\* Please Refer to Appendix B for more information related to Electronic Software Delivery for Small Systems via Electronic Software Distribution website

### **3.3 Software Conversion**

#### **3.3.1 Option 11C**

Automatic conversion is supported directly to X11 Release 25 from the following releases (Note - not all releases were made available in all markets):

- X11 Release 16, 18, 20, 21, 22, 23, 24

#### **3.3.2 Option 11C Mini**

Automatic conversion is supported directly to X11 Release 25 from X11 Release 24.

### **3.4 Upgrades to Release 25 from Option 11/11E**

The Option 11/11E systems running on pre-Release 22 software require a hardware upgrade to Option 11C in order to support Release 25. The Option 11C system offers a menu driven installation and upgrade method. Please refer to Option 11C Installation and or Upgrade Procedures Guide for additional information. Please read the Option 11C NTPs thoroughly before performing any hardware/software changes. All upgrade procedures should be strictly followed step by step.

### **3.5 Upgrades to Release 25 for Option 11C**

The Boot Code on the SSC requires updating before upgrading software to Release 25.40. Refer to the "Small Systems Memory Requirements for Release 25" earlier in this Chapter for the requirements. Updating of the SSC Boot Code is a manual process that uses the Flash Boot ROM Utility.

Refer to NTP 553-3021-250 Upgrade procedures, Chapter 13.

### **3.6 Upgrades to Release 25 for Option 11C Mini**

Option 11C Mini was introduced with Release 24 on the NTDK97AA in Asia Pacific. This vintage of the Mini System Controller does not have sufficient memory for Release 25. To upgrade to Release 25 the minimum vintage of MSC is NTDK97AB or higher.

The Boot Code on the MSC requires updating before upgrading software to release 25. Refer to the "Small System Memory Requirements for Release 25" earlier in this chapter for the requirements.

Updating the MSC Boot code is a manual process that requires a PCMCIA card programmed with R25. The upgrade is done using the Flash Boot ROM Utility in LD 143.

Refer to NTP 553-3021-250 Upgrade Procedures Chapter 13.

### **3.7 Basic Configuration Data**

On Release 22.08, the "Basic Configuration" default data option provided only a configuration record and no other customer data. With X11 Release 22.16 and later, the "Basic Configuration" data option is expanded to include default data such as XPECs, Superloops, and other default data blocks. It doesn't include Model sets, routes, TN's etc. For complete default data including model sets etc., choose the Pre-Configured data option.

### **3.8 Use of BKO command in LD 43**

The BKO command is used to backup the customer data to an external data card (blank PCMCIA card) located in slot "B" on the CPU faceplate.

Warning: If the pre-programmed software PCMCIA card is used during BKO operation, the card cannot be used to install software without first removing the backup data, reformatting the disk, and reprogramming with the appropriate software.

### **3.9 Backwards Compatible Daughterboard - NTDK26**

The backward compatible daughterboard allows Option 11/11E/11C two cabinet copper) systems to be upgraded to Release 25 maintaining copper connectivity. The NTDK26 has a hardware key that prevents installation when the ethernet jumper (J7) is installed.

The ethernet jumper plug (J7) on the NTDK20 (Small System Controller) pack **MUST** be removed before the NTDK26 daughterboard is installed.

Note: Ethernet is not supported in this configuration.



## 4 Large System Advisements

### 4.1 Call Processor Memory Requirements

#### 4.1.1 Call Processor CP3, CP4

**Release 25 Minimum Memory Requirements for CP3 (68060) or CP4 (68060E) processors:**

Release 25 supports Motorola based Call Processors 68060 and 68060E as well as Call Processor PII (for Option 81C only). 68030 and 68040 Call Processors are not supported in Asia Pacific on Release 25. Systems operating on Motorola based Call Processors must meet the following minimum Flash and DRAM memory requirements.

System	Flash Memory Requirement	DRAM Memory Requirement	Total Memory
Option 51C/61C with CP3 or CP4	64 MB	64 MB	128 MB
Option 81C on 68060/68060E with 5 or less Network Groups	64 MB	64 MB	128 MB
Option 81C on 68060/68060E with 6 or more Network Groups	64MB	80 MB	144 MB

**Release 25.40 Recommended Memory Requirements for 68060E Processors:**

System	Flash Memory Requirement	DRAM Memory Requirement	Total Memory
Option 51C/61C	64 MB	64MB	128 MB
Option 81/ 81C (with or without Fiber Network Fabric)	64 MB	96 MB	160 MB

With X11 Release 25.40, all new Option 61C systems will be equipped with 68060E/160MB Call Processors (NT5D03PB). New Option 81C systems will only be offered with Call Processor Pentium® II CP PII equipped with 256MB memory.

Note: Option 51C will no longer be sold as a new system, however software-only upgrade to Release 25.40 will be offered to existing Option 51C.

### **Memory Upgrade**

The NTZC75AA DRAM Memory Upgrade Kit supports 32 MB DRAM memory upgrade of Call Processors 68060 and 68060E. This kit contains one 32 MB DRAM SIMM and supports the memory upgrade of one call processor card.

NTZC76AA supports optional Flash Memory upgrades. This kit may be used by distributors / customers who wish to standardize on higher flash memory configurations.

The NTZC77 kit contains the anti-static mat and ESD wrist-strap, which is required to perform a memory upgrade; NTZC77AA is not required if the distributor/customer already possesses the anti-static mat and wrist-strap.

#### **4.1.2 Call Processor Pentium® II CP PII**

**For Option 81C Systems on Call Processor Pentium® II CP PII:**

##### **Release 25.40**

Option 81C CP PII with 5 or less network groups can continue to use DRAM 128 MB when upgrading to Release 25.40.

Option 81C CP PII with 6 or more network groups **MUST** upgrade their DRAM to 256 MB when upgrading to Release 25.40.

---

**Release 25 Minimum and Recommended Memory Requirements for Pentium® II CP PII:**

<b>System</b>	<b>Flash Memory Requirement</b>	<b>DRAM Memory Requirement</b>	<b>Total Memory</b>
Option 81C CPP with 5 or fewer Network group Release 25.30	N/A	128 MB	128 MB
Option 81C CPP with 5 or fewer Network group Release 25.40	N/A	128 MB	128 MB
Option 81C CPP with 6 or more Network group <b>Release 25.40 or later</b>	N/A	256 MB	256 MB

## 4.2 Upgrading to X11 Release 25.40

For hardware upgrades that require (or elect) call processor upgrades, Call Processor CP4 (68060E) is available for 61C and 81/81C systems.

**Where the processor upgrade is to the CP4 (68060E), suggested memory configurations for Call Processor CP4 (68060E) are as per recommended memory configurations in Section 4.1.1.**

## 4.3 Software Delivery

Release 25 Software will be shipped on CD-ROM media only. This means that Release 25 requires an IODU/C (NT5D61) on a system operating with Call Processor 68060 (NT5D10) or 68060E (NT5D03).

For an Option 81C system equipped with Call Processor PII, Release 25 requires a cPCI Multi-Media Disk Unit (NT4N43). The Multi-Media Disk Unit is part of the hardware package for an upgrade to Call Processor PII.

Release 25 software and related documentation such as General Release Bulletins can now be downloaded from the Electronic Software Distribution (ESD) web site for Large and Small Systems.

Refer to Appendix B, "Electronic Software Distribution (ESD)", of this document, for more details.

---

## **4.4 Call Processor CP PII – 256MB Memory Upgrade - Release 25.40**

The CP PII memory enhancement feature increases the memory to 256MB for new Option 81C system and allows existing systems to upgrade their memory. To upgrade existing CP PII (128MB) hardware; a 256MB memory upgrade kit shall be used with the following order codes:

256 MB CP PII memory upgrade Kit for one CPU only - NT4N19AA / A0856417

Two memory upgrades kits are required to upgrade a system, this feature will not support true redundant mode in a mixed-memory configuration.

Upgraded CP PII CPU Board (A0786611 or A0810496) from 128MB to 256MB will be coded with - NT4N64AA Rel 01

All new CP PII CPU (256MB) will be NT4N64AA Rel 02 / A0844698

CP PII with 256 MB of memory requires X11 Release 25.40 Software, and cannot be used with Release 25.30 or earlier releases.

## **4.5 Large System New Global Clock Controller - NTRB53**

The NTRB53 Global Clock Controller will replace the QPC471H and QPC775F in new 61C and 81C systems.

Existing Clock Controllers QPC471 & QPC775 will continue to function with X11 Software Release 25.40, the new clock controller is not mandatory with Release 25.40.

The NTRB53 Clock controller retains existing functionality and software configuration of the clock remains unchanged.

Release 25.40 Software introduces a PSDL object to allow field upgrades of the clock's firmware.

The NTRB53 new clock controller is compatible with Option 51C, 61C, 81C from X11 Releases 19 and later.

The NTRB53 Clock controller retains existing functionality, but it cannot co-exist with QPC471 or QPC775 in the same system.

The New Clock Hardware will be available after the introduction of Release 25.40.

---

## 5 Documentation

---

### 5.1 Release 25.40 Documentation Overview

The Release 25 documentation suite has been updated for Release 25.40 to reflect the new content. The changes include:

- What's New for Meridian 1 X11 Release 25.40 Guide - P0942056. This document contains the following information for each of the new features of Release 25.40:
  - Description
  - Operating Parameters
  - Feature Interactions
  - Feature Packaging
  - Feature Implementation
  - Feature Operation
- Meridian Electronic Reference Library (MERL) CD-ROMs will be included with each Release 25.40 software order. The order code is NTLH19AC - A0859697, it will include the application NTP CD-ROM and the Meridian 1 CD-ROM. (The Meridian 1 CD-ROM is no longer separately orderable.)
- Meridian IP Telephony Gateway (ITG) Line2.1 NTP will be part of MERL and will also be available on a separate CD-ROM, the order code for the individual CD-ROM is NTDW81AB - A0868154
- SIPE (DPNSS & MISP) content changes (post Release 25.30) will be added to the appropriate Option 11C and Option 11C Mini guides.
- CPP & FNF information that was in standalone NTP's for Release 25.15 & Release 25.30 has been rolled into the appropriate NTP's in the main suite.
- Library Navigator Release 25.40 (P0942452)
- There is one new coil NTP and four new binder NTPs added to the library:
  - Meridian / Succession Systems Remote Office Guide (Binder)
  - Meridian / Succession Systems Internet Application and Terminals description Guide (Binder)
  - Meridian / Succession Systems Integrated Applications Guide (Binder)
  - Meridian Telephone and Console Description reference Guide (Binder)
  - Meridian / Succession Internet Terminals Description Guide (Coil)

**The following items are discontinued with Release 25.40:**

- Condensed library
- Spiral binding of I/O Guides
- Meridian 1 CD-ROM NTP (MERL CD-ROM includes Release 25.40 information)
- CP PII Guide (Merged into the appropriate documents in the Reference Library)
- FNF Guide (Merged into the appropriate documents in the Reference Library)
- Meridian 1 X11 Task System Programming guide.
- Meridian 1 X11 Task Fault Clearing task guide.

## 5.2 Documentation Order Codes

### Release 25 Meridian 1 CD-ROM

Description	Release 25.30 PEC CPC Codes	Release 25.40 PEC CPC Codes
Meridian Electronic Reference Library [MERL] Option 11C-81C	NTLH19AB A0835745	NTLH19AC A0859697
Meridian IP Telephony Gateway [ITG] line	NTDW81AA A0806119	NTDW81AC A0870183

## Option 11C and 11C Mini Release 25 Documentation

Description	Release 25.30 PEC CPC Codes	Release 25.40 PEC CPC Codes
<b>Option 11C - Coil Package</b>	<b>NTTK31AC A08185245</b>	<b>NTTK31AD A0872793</b>
System Security Management	N/A P0913527	N/A P0949474
Option 11C Planning and Installation	N/A P0915838	N/A P0985656
Option 11C and 11C Mini Fault Clearing Guide	N/A P0915839	N/A P0915839
Option 11C and 11C Mini Central Answering Position Guide	N/A P0910772	N/A P0910772
Option 11C and 11C Mini Customer Controlled Back-up and Restore Guide	N/A P0910773	N/A P0910773
Option 11C and 11C Mini Upgrade Procedures Guide	N/A P0915840	N/A P0949475
Input/Output Administration Guide	N/A P0915832	N/A P0942453
Input/Output Maintenance Guide	N/A P0915833	N/A P0942455
Input/Output System Messages Guide	N/A P0915834	N/A P0942454
Option 11C Survivability	N/A P0919734	N/A P0949476

Description	Release 25.30 PEC CPC Codes	Release 25.40 PEC CPC Codes
<b>Option 11C Mini - Coil Package</b>	<b>NTKG80CG A0818640</b>	<b>NTKG80CH A0872530</b>
System Security Management	N/A P0913527	N/A P0949474
Option 11C Mini Planning and Installation	N/A P0910788	N/A P0910788
Option 11C and 11C Mini Fault Clearing Guide	N/A P0915839	N/A P0915839
Option 11C and 11C Mini Central Answering Position Guide	N/A P0910772	N/A P0910772
Option 11C and 11C Mini Customer Controlled Back-up and Restore Guide	N/A P0910773	N/A P0910773

<b>Description</b>	<b>Release 25.30 PEC CPC Codes</b>	<b>Release 25.40 PEC CPC Codes</b>
Option 11C and 11C Mini Upgrade Procedures Guide	N/A P0915840	N/A P0949475
Input/Output Administration Guide	N/A P0915832	N/A P0942453
Input/Output Maintenance Guide	N/A P0915833	N/A P0942455
Input/Output System Messages Guide	N/A P0915834	N/A P0942454

<b>Description</b>	<b>Release 25.30 PEC CPC Codes</b>	<b>Release 25.40 PEC CPC Codes</b>
<b>Option 11C Mini Fiber Expansion Package</b>	<b>NTTK38AC A0818527</b>	<b>NTTK38AD A0874342</b>
Option 11C Mini Planning and Installation	N/A P0910788	N/A P0910788
Option 11C and 11C Mini Expansion Guide	N/A P0915853	N/A P0915853
Option 11C Survivability	N/A P0919734	N/A P0949476

### Option 11C and 11C Mini Optional Documents

<b>Description</b>	<b>Release 25.30 PEC CPC Codes</b>	<b>Release 25.40 PEC CPC Codes</b>
Option 11C and 11C Mini Technical Reference Guide	N/A P0915854	N/A P0942448
Option 11C ISDN BRI Hardware, installation and Maintenance	N/A P0915857	N/A P0942451
Option 11C 1.5 MB DTI/PRI	N/A P0915856	N/A P0942449
Option 11C 2.0 MB DTI/PRI	N/A P0915856	N/A P0942450



## Option 51C to 81C Release 25 Documentation

Description	Release 25.30 PEC CPC Codes	Release 25.40 PEC CPC Codes
<b>Global Meridian 1 Reference Library</b>	<b>NTLH02AB A0828803</b>	<b>NTLH02AC A0859721</b>
Meridian 1 X11 Release 25 Library Navigator	N/A P0934461	N/A P0942452
What's New guide- Release 25.40	N/A P0919733	N/A P0942056
Meridian 1 X11 Release 25 Planning and Engineering	NTLH03AA A0804746	NTLH03AB A0859742
Meridian 1 X11 Release 25 System installation	NTLH04AA A0804747	NTLH04AB A0859756
Meridian 1 X11 Release 25 System Maintenance	NTLH04AA A0804747	NTLH04AE A0859838
Meridian 1 X11 Release 25 Upgrade and Conversion Procedure	NTLH05AA A0804748	NTLH05AB A0859763
Meridian 1 X11 Release 25 Remote Services Products Guide	NTLH06AA A0804749	NTLH06AB A0859769
Software Feature Guide	NTLH08AA A0804751	NTLH08AB A0859771
Software System Management	NTLH10AA A0804757	NTLH10AB A0859794
Software Networking	NTLH11AA A0804767	NTLH11AB A0859795
Meridian 1 X11 Release 25 Software Meridian Data Services	NTLH12AA A0804771	NTLH12AB A0859796

Description	Release 25.30 PEC CPC Codes	Release 25.40 PEC CPC Codes
Meridian 1 X11 Release 25 Software Automatic Call Distribution	NTLH13AA A0804775	NTLH13AB A0859798
Hospitality	NTLH14AA A0804777	NTLH14AB A0859799
Attendant PC Guide	N/A	NTLH15AB A0884082
Input/Output Administration Guide	N/A P0915832	N/A P0942453
Input/Output Maintenance Guide	N/A P0915833	N/A P0942455
Input/Output System Messages Guide	N/A P0915834	N/A P0942454

## Individual Coil Guides

<b>Description</b>	<b>Release 25.30 PEC CPC Codes</b>	<b>Release 25.40 PEC CPC Codes</b>
Meridian 1 X11 Release 25 Library Navigator	N/A P0934461	N/A P0942452
Input/Output Administration Guide	N/A P0915832	N/A P0942453
Input/Output Maintenance Guide	N/A P0915833	N/A P0942455
Input/Output System Messages Guide	N/A P0915834	N/A P0942454
System Security Management	N/A A0913527	N/A P0949474
Meridian 1 X11 Integrated Voice Services	N/A P0909573	N/A P0909573
Meridian 1 X11 Release 25 NT5D61 IODU/C Reference Guide	N/A P0912861	N/A P0912861
Meridian 1 X11 Release 25 Call Processor Card Field Memory Upgrade	N/A P0912862	N/A P0912862
Meridian 1 X11 Release 25 Meridian Integrated Conference Bridge Description, Installation administration and Maintenance	N/A P0912865	N/A P0912865
Meridian 1 X11 Release 25 Meridian Integrated RAN Description, Installation and Operation	N/A P0912866	N/A P0912866
Meridian 1 X11 Release 25 Meridian Integrated Personal Call Director	N/A P0914163	N/A P0914163
Meridian 1 X11 Release 25 Meridian Internet Telephony Gateway [ITG] Trunk 1.0 Basic pre-Trunk Signaling Description, Installation and Operation	N/A P0912863	N/A P0912863
Meridian 1 X11 Release 25 Meridian Internet Telephony Gateway [ITG] Trunk 2.0/ISDN Signaling Link [ISL] Port Description, Installation and Maintenance	N/A P0912540	N/A P0912540
Meridian 1 X11 Meridian Internet Telephony Gateway [ITG] Line Card 1.0 IP Telecommuter Description, Installation and Operation	N/A P0912864	N/A P0912864

## Introductory Task Guides

Description	Release 25.30 PEC CPC Codes	Release 25.40 PEC CPC Codes
Meridian 1 X11 Task Basic Telecom Management Guide	N/A P0912434	N/A P0912434
Meridian 1 X11 Task Network Planning Guide	N/A P0912435	N/A P0912435

## Optional Documents - Binders

Description	Release 25.30 PEC CPC Codes	Release 25.40 PEC CPC Codes
Meridian 1 X11 Release 25 DPNSS1	NTKF79AA A0788073	NTKF79AB A0859800

## New Documents with Release 25.40

Description	Release 25.40 PEC CPC Codes
Meridian / Succession Systems Remote Office Guide	NTLH02AF A0860307
Internet Applications and Terminals Description Guide	NTLH02AH A0860309
Meridian 1 X11 Release 25 Meridian Integrated Applications	NTLH02AJ A0860311
Meridian 1 X11 Release 25 Telephones and Console Description Reference Guide	NTLH02AG A0860308
Internet Telephony Gateway [ITG] Line 2.2 Card Description, Installation and Operation	N/A P0986457
Internet Terminals Description Guide	N/A P0986458

## Data Sheets

Description	Release 25.30 PEC CPC Codes	Release 25.40 PEC CPC Codes
Meridian 1 X11 Release 25 Data sheet Note: Data sheets are not available in all regions.	N/A P0907149	N/A P0944014

---

**Retired Documents for Meridian 1 X11 Release 25.40**

<b>Description</b>	<b>Release 25.30 PEC CPC Codes</b>	<b>Note</b>
Meridian 1 X11 Release 25 Software Input/Output Guides	NTLH09AB A0818140	Binding will be done in binder only (no spiral)
Global Release 25 CD-ROM Meridian 1 Reference Library Option 11C-81C	NTLH01AC A0828806	MERL CD includes Release 25.40 information
Meridian 1 X11 Release 25 Meridian Condensed Library	NTLH17AB A0828804	Discontinued.
Meridian 1 X11 Release 25 Call Processor PII Reference Library	NT5F36AA A0786997	Included in Meridian 1 Reference Library
Meridian 1 X11 Release 25 Fiber Network Fabric FNF Reference Guide	NT5F37AA A0786998	Included in Meridian 1 Reference Library
Meridian 1 X11 Release 25 Call Processor PII, FNF Description, Installation and Administration Guide	N/A P0914249	Included in Meridian 1 Reference Library
Meridian 1 X11 Release 25 Call Processor PII, FNF Software Upgrade Guide	N/A P0914248	Included in Meridian 1 Reference Library
Meridian 1 X11 Release 25 Task System Programming Guide	N/A P0912433	Discontinued.
Meridian 1 X11 Release 25 Task Fault Clearing Guide	N/A P0912436	Discontinued.

## 6 Software ISM & Packaging Changes

### 6.1 Software ISM

#### 6.1.1 New ISM Counters

With the introduction of X11 Release 25.10, there were six new ISM Parameters and two changed ISM parameters for all systems.

There was one new ISM in RELEASE 25.30 for small systems only.

Release 25.40 introduces one new ISM Parameter.

#### Release 25 ISM Parameters

ISM Parameter	Systems	Release Introduced
ITG ISDN Trunks	All	25.10
Internet Telephones* NTZC82AA / A0804340	All	25.15 + Patches Or 25.30 + MDCS
Attendant Consoles	All	25.10
Wireless Visitor	All	25.40
CLASS Telephones	All	25.10
Phantom Ports	All	25.10
Data Ports	All	25.10
Traditional Trunks	All	25.10
Analogue Telephones	All	Changed with 25.10
Digital Telephones	All	Changed with 25.10
Survivability NTSF8720 / A0784530	Small system Only	25.30

Note: Internet Telephones ISM Parameter is used for both i2004 and i2050

### 6.1.2 Changes to Existing ISM Counters

With the introduction of Release 25, some ISMs will be counted differently. The following table provides a list indicating how the various peripherals (Lines, Trunks and Sets) are counted before and with the introduction of Release 25.

<b>A TN configured in Meridian 1</b>	<b>Existing ISM (*)</b>	<b>ISM in R25 (*)</b>
ACD Analogue Set	ACD Agents and Analogue Telephones	ACD Agents and Analogue Telephones
ACD Digital Set	ACD Agents and Digital Telephones	ACD Agents and Digital Telephones
Analogue AST and ACD Set	AST, Analogue Telephone and ACD Agents	AST, Analogue Telephone and ACD Agents
Analogue AST Set	AST and Analogue Telephones	AST and Analogue Telephones
Analogue Data Set (FAXA)	Analogue Telephones	Data Ports
Analogue Set	Analogue Telephones	Analogue Telephones
ATA Set (VCE)	Digital Telephones	Digital Telephones
Attendant Console	None	Attendant Consoles
CLASS Set	Analogue Telephones	CLASS Telephone
Digital AST and ACD Set	AST, Digital Telephone and ACD Agents	AST, Digital Telephone and ACD Agents
Digital AST Set	AST and Digital Telephones	AST and Digital Telephones
Digital Data Set	Digital Telephones	Data Ports
i2004 Telephone Set	None	Internet Telephones
Line-Side T1/E1	Analogue Telephones	Analogue Telephones
MCA Set	Digital Telephones	Data Ports
MCMO (CT2) Set	Wireless Telephones	Wireless Telephones
MCU	Digital Telephones	Data Ports
MDECT Set	Wireless Telephones	Wireless Telephones
Meridian Integrated ACD Port	ACD Agents and Digital Telephones	ACD Agents and Digital Telephones
Meridian Mail / CallPilot ACD Port	None	None
PC console	None	Attendant Consoles
Phantom Analogue Set	None	Phantom Ports

<b>A TN configured in Meridian 1</b>	<b>Existing ISM (*)</b>	<b>ISM in R25 (*)</b>
Phantom Digital Set	Wireless Telephones	Wireless Telephones
R232 DAC	Digital Telephones	Data Ports
R422 DAC	Digital Telephones	Data Ports
ITG 1.0 Trunk	None	ITG ISDN Trunks
ITG 2.0 Trunk	None	ITG ISDN Trunks
1.5 Mb DTI Trunk	None	Traditional Trunks
1.5 Mb PRI Trunk	None	Traditional Trunks
2.0 Mb DTI Trunk	None	Traditional Trunks
2.0Mb PRI Trunk	None	Traditional Trunks
Analogue Trunk	None	Traditional Trunks
BRI Trunk	None	Traditional Trunks
IDA Trunk	None	Traditional Trunks
ISA Trunk	None	Traditional Trunks
ISL Trunk	None	Traditional Trunks
VNS Trunk	None	Traditional Trunks

## 6.2 Software Packages

The following tables provide a list of the New and Enhanced Packages introduced in Release 25.40 and Release 25.30, their mnemonics, and their package numbers.

### New Packages

<b>Package Name</b>	<b>Package Number &amp; Mnemonic</b>	<b>X11 Software Release</b>	<b>Supported System</b>
IP Connectivity	295 IPEX	25.30	Option 11C & 11 Mini only
Attendant Announcement	384 ATAN	25.40	All
Priority Network Override	389 PONW	25.40	All

Package Name	Package Number & Mnemonic	X11 Software Release	Supported System
M3900 Productivity Enhancements	386 M3900 PROD-ENH	25.40	All
M3900 Virtual Office Enhancements	387 VIRTUAL-OFFICE ENH	25.40	All
ACD DN Expansion	388 ACDE	25.40	Option 81C CP PII only

## Enhanced Packages

New Feature	Package Number	Mnemonic	Package Name	Supported System
Dynamic PSDL	0	BASE	Base Software	All
Keycode Enhancement.	0	BASE	Base Software	All
CP PII Memory Enh.	0	BASE	Base Software	81C CP PII
New Large system Global Clock controller	0	BASE	Base Software	Option 51C & 61C & 81C
ITGL 2.2 & i2050	0	BASE	Base Software	All
M3900 Phase III Enh.	0	BASE	Base Software	All
Refine Corporate Directory Search	381	CDIR	M3900 Corporate Directory	All
Virtual Office Speed Dial Capabilities	382	VIRTUAL_ OFFICE	M3900 Virtual Office	All



New Feature	Package Number	Mnemonic	Package Name	Supported System
QSIG Message Waiting Indicator	305	QSIG-GF	QSIG Generic Functioning	All
- QSIG Message Waiting Indicator.	316	QSIG-SS	QSIG Supplementary Services	All
- QSIG Call Completion & Call Diversion Interaction Enhancement.				All
- Redirecting Name Display Enhancement for QSIG Call Rerouting.				All
- CLID Enhancement for QSIG Call Diversion				All

---

## 7 Feature Overview

---

### 7.1 Release 25.40 Features Summary

The following list of features is the preliminary content list for Release 25.40. Please note that individual features may be added or deleted from this list depending upon development, market, or testing conditions.

#### **QSIG Product Improvements**

##### **QSIG Call Completion and Call Diversion Interaction Enhancement**

This product improvement provides for QSIG – MCDN and QSIG-QSIG gateways, the capability of employing Call Completion (CCBS and CCNR) when QSIG Call Diversion occurs.

##### **CLID Enhancement for QSIG Call Diversion**

This product improvement provides for QSIG GF interfaces, the capability of displaying the correct CLID on the calling user's set when the diverted-to user set is rung during QSIG call diversion.

##### **Redirecting Name Display Enhancement for QSIG Call Rerouting**

This product improvement provides for QSIG GF interfaces, the capability of displaying the redirecting name on the diverted-to user's set, during QSIG Call Diversion due to Call Rerouting algorithm, when the originating and diverted-to user's are present on the same node.

#### **QSIG Message Waiting Indication**

QSIG Message Waiting Indication allows Meridian 1 users, connected to a voice mail system on another vendor's PBX, to get a message waiting indication. This feature provides a means to pass the Message Waiting Indicator across a private QSIG network with Meridian and other vendors' PBXs. In the same way the feature allows a Meridian Mail hosted at a Meridian 1 switch to serve third party PBX users across a QSIG network.

## **ACD DN/CDN Expansion**

The Automatic Call Distribution Directory Number/Control Directory Number (AC DN/CDN) Expansion feature (ACDE Package 388) increases the allowable number of ACD DN and/or CDNs on a Meridian 1 Option 81C CP PII system from 240 to a maximum of 1000 for each customer. The number of customer groups remains at 100 and the system level total of configurable ACD DN/CDNs remains the same at 24,000.

## **Attendant Announcement**

X11 Release 25.40 introduces the Attendant Announcement feature (AANN Package 384) delivers a pre-recorded message for calls terminated on the attendant, attendant queue, redirected to the attendant or night station.

The Attendant Announcement feature provides different announcements based on the state of the call:

- Announcement when terminating to the Attendant (ANAT).
- Announcement when Night service is activated (ANNS)
- Announcement when Call forward No answer to the Attendant (ANFA).
- Announcement when Call forward Busy to the Attendant (ANFB).
- Announcement when Slow Answer Recall to the Attendant (ANSR).
- Announcement on Attendant Extended Calls (ANXC).
- Announcement when Overflowed or Forwarded (ANOF) if customer uses the Attendant Overflow Position (AOP) or Attendant Alternative Answer (AAA) features.

## **ITG Line side 2.2 & i2050 Software IP Phone**

The i2050 Software IP Phone is Windows-Based application that makes your desktop computer a powerful tool for unified voice, data and video communications.

The i2050 Software Phone support the following:

- Traditional telephony features such as Call origination, Call Termination, Conference, Transfer, Hold, and Message waiting indication.
- Dedicated Hold, Release, Answer, Volume, Mute, Navigation and Message Waiting indication keys.
- Macro functions for programming lengthy dialing patterns.
- Powerful directory capabilities; locally stored on the PC or linked to external directories such as LDAP, Outlook, and ACT.
- DHCH-compliant services.
- Nortel Networks USB Audio Kit.
- “One-click” direct dialing from various windows and applications.
- Online help with full index search capabilities.

## **Survivable IP Expansion – MISP Support & DPNSS**

Enable an MISP card to be supported in an Option 11C/11C Mini Survivable IP Expansion cabinet.

## **Auto Negotiation for SIPE**

This enhancement creates a prompt in LD 117 that allows the user to turn on/off auto negotiation. The ability to control Auto negotiation on the Meridian 1 will simplify the installation and support routers and switches where auto-negotiation is turned on.

## **CP PII Memory Enhancement**

Increase the amount of DRAM on the CPP processor from 128 MB to 256 MB. Required for all Release 25.40 and later CP PII Option 81C systems with 6 or more groups.

## **Large systems New Global Clock Controller**

Introduces a new Global clock controller (NTRB53) for Option 51C, 61C, 81 and 81C systems.

The NTRB53 Clock Controller will replace the QPC471H and QPC775F in new systems. Existing Clock Controllers QPC471 & QPC775 will continue to function with X11 Software Release 25.40. The NTRB53 Clock controller retains existing functionality and software configuration of the clock remains unchanged.

Meridian X11 Release 25.40 software introduces a PSDL object to allow field upgrades of the clock's firmware. The NTRB53 new clock controller is compatible with Option 51C, 61C, 81C from X11 Releases 19 and later.

## **New Wireless Visitors ISM**

Introduces a new ISM for MDECT wireless visitors to differentiate them from "home" users.

## **Singapore ISDN Enhancement**

This feature allows the Meridian 1 to interwork properly with Nokia CO switch for the Singapore ISDN interface. It allows the Meridian 1 to automatically restart the ISDN Trunks in the event that the link is torn down and reconnects again.

This Feature is introduced through modification to Singapore Loadware.

This feature is available to Singapore Market only.

## Network Break-in and Force Disconnect

The Network Break-in and Force Disconnect feature allows an analog or digital set to perform the following functions:

- Break in to an established two- party call
- Force disconnect an established two-party call

Priority Levels PLEVs (0 to 7) are configured on a set basis, A set can break in or disconnect an established call only if it has a priority level greater than of the wanted and unwanted parties. This feature introduces Priority Network Override (PONW) Package 389.

## Dynamic PSDL

Dynamic PSDL will split the current PSDL file into 'individual' product loadware files. Meridian 1 will build the PSDL.rec file dynamically during installation from individual product loadware files. Previously the larger PSDL.rec file was included with the software during loadbuild. This will allow for field replacement of individual loadware files as required. It will also eliminate the duplication of loadware files for M39xx language management. With this functionality only 1 PCMCIA card for small systems is required to deliver the entire language file.

DPSDL provides a vehicle to introduce New Loadware to the field if required in a timely manner, without waiting for Software upissue and avoiding all upgrade related issues such as keycode, ordering codes, system management compatibility and applications compatibility. Prior to the introduction of Release 25.40 (DPSDL Feature) a new X11 Software upissue was required to deliver new loadware upgrade

## Keycode Enhancement Feature

The purpose of this enhancement is to modify the dependency between the X11 Software Keycode and the X11 software version release name. Currently, the keycode is linked to the release, issue, and phase letter i.e. 25.27A. The Phase letter (a.k.a. subissue) is used for Beta releases of software.

This enhancement will remove the dependency of the keycode to the phase letter and leaves it linked to the keycode to the release and issue number only. This means that a new keycode will not be required to upgrade between Beta sub-issues of software (i.e. from 25.37B to 25.37C, etc.) as long as there are no changes to the other keycode parameters such as ISM parameters limits or package content. A new keycode will be required when upgrading to a different issue, such as the market Release version 25.40, or if other keycode parameters change.

## **SDID number as CLID for Euro-ISDN trunk**

The SDID functionality will be made available for Euro-ISDN calls with the introduction of Release 25.40. The SDID feature replaces the DN by the DID number of the IDC table in LD 15. This will be enabled for CLID option OPT1 [international calls], OPT2-OPT5 [based on APAC ISDN requirements for international calls]. This enhancement replaces the DN of an analog or digital set or an attendant console with incoming DID-DN. This feature is not applicable to trunks as originator.

## **PDT Password Enhancement**

Allows an authorized Distributor or Nortel Networks Technician to change the diagnostic passwords. The PDT Password enhancement gives administrators the ability to change the level 1 and level 2 PDT passwords. Currently this capability can only be delivered using patch MPLR13326. Starting with Release 25.40 this capability is integrated into the software. With release 25.40 this password will need to be set in order to be able to access PDT.

Refer to X11 System Security Management NTP [553-3001-302]

## **PDT Access log Enhancement**

As remote sessions can potentially occur anywhere on a network with access to the Meridian ELAN, this makes problem investigation much more difficult to coordinate. Potential illegal accesses cannot be easily traced as the offender's login user ID is never output or recorded.

Also, because ELAN accesses are much more popular due to MAT/OTM availability, the file can be filled within hours rather than days.

This enhancement would allow the access log to record the user ID and increase the capacity to handle more entries in the log file.

Refer to X11 System Security Management NTP [553-3001-302].

## **Release 25.40 Enhanced M3900 Features**

### **Refined Corporate Directory Search**

Refined Corporate Directory Search introduces a new "Resume" soft key in the Corporate Directory screen so that the user can resume the keypad entry to enter additional letters to narrow the search further without reentering the letters from the beginning (for M3903, M3904 and M3905).

### **M3900 CTIA and TAPI**

Delivers the M3900 CTIA and TAPI 2.1 service provider (for M3902, M3903, M3904 and M3905).

### **Headset Support When Handsfree Disabled**

Currently, headsets are not supported when handsfree is disabled on an M3900 set. This enhancement will enable end users to use the headset key on their set if the administrator deems it necessary to deny the handsfree class of service (for M3903 and M3904).

### **Speed Dial Capabilities (Virtual Office)**

The current Virtual Office feature enables users to log on to a host set and have their personal profile appear at that set. However, at the present time the configuration of speed call features on a virtual TN is prohibited. The change will be to enable usage of speed dial. (For M3903 and M3904).

### **Call Forward enhancements**

The call forward number is automatically deleted if the user starts entering a new number rather than requiring multiple presses of the delete key (for M3902, M3903, M3904 and M3905).

### **Password Clear**

When the switch issues the Directory/Call Log password reset command, the password is turned off instead of set to "12345678" (for M3903, M3904 and M3905).

### **Pause in dialing strings**

Enables entering 1.5 second pauses in a dialing string. (For M3902, M3903, M3904 and M3905).

### **31 Digit Predial**

Increases number of digits in the dialing strings from 24 to 31 for Call Log, Personal Directory, Redial List, & Predial (for M3902, M3903, M3904 and M3905).

**Special Characters**

M3900 character set will now include all the special characters defined in the ASCII character set to be used with set-to-set messaging, personal directory, editing feature key labels, etc. (for M3902, M3903, M3904 and M3905).

**M3905 Phase III**

Delivers most of Release 2 & 3 M3900 features to M3905 with common F/W on M3904 and M3905.

**Virtual Office Login Enhancement**

Currently only one user can log into Virtual Office at a time, and other users attempting to log in at the same time receive a "system busy, try later" message. This enhancement will increase the number of users that can log on at the same time.

**One-button Access Keys**

Improvements to the way the Personal Directory, Corporate Directory, Call Log, & Redial List features are accessed (for M3903, M3904 and M3905).

- Call Log and Redial List - One button access via softkeys or feature keys.
- Directory - user can start to conduct a directory search via the dial pad without pressing the Select softkey
- Corporate Directory-Users begin the search without pressing the Select key.

**System Initiated Language Selection**

M3900 sets on systems in different countries can initialize with a default language other than English. This eliminates the need for system administrators/users to have to go through the language selection option on each set to select a different language (for M3902, M3903, M3904 and M3905).

**Set-to-Set Messaging Enhancements**

Allows a system administrator to predefine ten messages that can be customized by the administrator to reflect the type of messages most often used by the users. Users can select one message to be sent as their Set-to-Set message and they can edit that one message to whatever they like. The user may only need to modify a small portion of the message to add the correct date/time, etc.. Only one message per set is actually stored in the system. (For M3903, M3904 and M3905)

**Erase Callers and Redial List for Virtual Office**

Allows the lists to be cleared when a virtual office worker logs out of the host M3900 set (for M3903 and M3904).



### Automatic Logout for Virtual Office

Allows the administrator to specify a time in which all idle virtual terminals will be logged out. Also, if a user tries to log into a host terminal, but is still logged into another terminal, the first terminal will be logged out and the user will be allowed to log into the second terminal (for M3903 and M3904).

### Full Duplex Handsfree

Delivers a full duplex handsfree cartridge to a new M3904 set.

### M3900 Phase 3 Feature/X11 Release 25.40 Compatibility Table

Feature	Feature Package	M3902	M3903	M3904	M3905
Call Forward Enhancements	N/A	X	X	X	X
Password Clear	N/A		X	X	X
Pause in Dialing Strings	N/A	X	X	X	X
31 Digit Predial	N/A	X	X	X	X
Special Characters	N/A	X	X	X	X
Refined Corporate Directory Search	N/A		X	X	X
Headset State Support	N/A		X	X	
Speed Dial Capabilities (Virtual Office)	N/A		X	X	
Virtual Office Login Enhancement	N/A		X	X	
Computer Telephony Integration Adapter (CTIA)	N/A	X	X	X	X
PC Utility Adapter	N/A	X	X	X	X
Full Duplex Handsfree Accessory	N/A			X	
M3905 Phase 3 set	N/A				X
Secondary DN Dialing	N/A		X	X	X
One-button Feature Access Keys	Pkg. 386		X	X	X
Set-to-Set Messaging Enhancements	Pkg. 386		X	X	X
System Initiated Language Selection	Pkg. 386	X	X	X	X
Virtual Office Automatic Logout	Pkg. 387		X	X	
Redial & Callers List Erase (Virtual Office)	Pkg. 387		X	X	

## **7.2 Release 25.30 Features Summary**

### **Option 11C/Mini IP Expansion**

The Option 11C/Mini IP Expansion provides IP interconnection between Option 11C main and expansion cabinets. This IP interconnection enables:

- Increased Digital Trunking Capacity
- Voice Distribution over Campus Data Network via IP Expansion Cabinet
- Survivable Expansion Cabinets

This new feature is applicable to Option 11C and Option 11C Mini systems.

### **Meridian ITG line-side & i2004 Internet Telephones**

The Meridian ITG Line-side offering and i2004 Internet Telephone unifies a number of enterprise-critical communication functions and provides the customer with the benefits of IP Telephony such as simplified management without sacrificing features, reliability or Quality of Service (QoS).

### **The Scheduled Electronic Lock (SELK)**

The Scheduled Electronic Lock (SELK) enhances of the Electronic Lock Feature.

The Scheduled Electronic Lock feature automatically locks telephone sets at predetermined times. These times are defined in the Scheduled Access Restrictions (SAR) database (Overlay 88). SAR group numbers are also defined in LD 88. A maximum of eight scheduled lock times can be assigned to each group.

### **Night Service Enhancement for BRI Trunks**

Night Service Enhancement for BRI Trunks enhances the functionality of the Night Service feature. Night Service allows calls that are normally directed to the attendant to be routed to another defined destination. With the Night Service Enhancement for BRI Trunks feature, a Night Service DN (NITE) or Night Service Group number (NGRP) can be defined for BRI trunks.

## Appendix A: Auxiliary Processor Alignment Release 25.40

Auxiliary Processor	Compatibility (Release)
<b>System Management</b>	
Meridian Administration Tools (MAT)	6.6x is supporting Release 25.30 MAT is <u>Not</u> supported on Release 25.40 or later
Optivity Telephony Manager (OTM)	1.2 and later
<b>Messaging</b>	
Call Pilot	1.x
Call Pilot 100/150 for Option 11C/Mini	1.5
Meridian Mail	11.xx - 13.xx
Meridian Mail Card Option	11.xx - 13.xx
Meridian Mail reporter	2.x <sup>a</sup>
<b>Wireless</b>	
Companion DECT	45000302 or later (Not downloaded from Meridian)
Companion	3.xx - 7.xx (7.xx required for Enhanced Capacity)
Wireless IP Gateway	1.1x
<b>Remote Product</b>	
9150	1.3 or higher 1.3.4 is M3900 Phase III Concurrent
9110 & 9115	1.3.x or higher 1.3.4 is M3900 Phase III Concurrent
Meridian Home office MHO-II	1.18 is supported with Release 25.40, but Not supported with M3900 Phase III
<b>Call Center Applications</b>	
Meridian MAX [IPEX]	10.x
Meridian MAX [IPE]	8.7, 9.2, 9.3

Network Administration Center [NAC]	2.5 <sup>a</sup>
Meridian Customer Controlled Routing [MCCR] (Discontinued as of July 2000, SCCS offer the functionality of MCRR)	3B, 3C <sup>a</sup>
Meridian Link [Mlink] (Replaced by Meridian Link Services MLS)	5, 5C <sup>a</sup>
Meridian Link & MCCR Co-residency	6.0,6.4
Meridian Link Services [MLS] (Part of SCCS, but sold as a separate product to replace Meridian Link)	4.0,4.2
<b>Symposium Applications &amp; IVR</b>	
Symposium Link	6.x
Symposium Agent Greeting	2.0
Symposium TAPI Service Provider / Symposium Agent	2.x
Symposium Desktop TAPI Service Provider for MCA (Meridian Communicator Adapter)	1.x – 2.x
Symposium Express Call Center [SECC]	2.x.3.x
Symposium Call Center Server [SCCS]	3.x, 4.x
Symposium Call Center Server (SCCS) release 1.5 is a retired product. Customers should be upgrading SCCS to the latest supported release if they plan on running X11 release 25.40. The upgrade sequence varies depending on which X11 release you are upgrading from.	<p><u>X11 R23</u> - Customers who are running SCCS release 1.5 with X11 Release 23, should <u>upgrade their Meridian 1 to Release 25.40, prior to upgrading their SCCS</u>. SCCS release 1.5 support for 25.40 is being provided only to facilitate an upgrade path for those customers who are running SCCS 1.5 with X11 Release 23. However, please note: SCCS1.5 should only be run with X11 release 25.40 for a limited period of time during the transition to later releases, since problems reported with this combination will result in the fast tracking of the SCCS upgrade to a fully supported release</p> <p><u>X11 R24 and R25</u> - Customers who are running SCCS release 1.5 with X11 Release 24 or earlier versions of X11 Release 25 should <u>upgrade their SCCS prior to upgrading to X11 25.40.</u></p>
Symposium Integrated Interactive Voice Response	2.2 <sup>a</sup>
Symposium Open Interactive Voice Response	4.0 <sup>a</sup>
Periphonics IVR (VPS)	5.x <sup>a</sup>

---

Peripherals IVR (MPS)	1.x <sup>a</sup>
Peripherals IPML (Peri-IPML)	2.0 <sup>a</sup>

<sup>a</sup> No X11 dependency.

---

## Appendix B: Electronic Software Distribution

---

### Electronic Software Delivery for Meridian 1 Systems via Nortel Network's Customer Support website

The software download process is required to take compressed software from the Internet and download it to your PC for duplication. Electronic Software Distribution via Nortel Network's Customer Support website provides a common portal to available Nortel Software.

The following is an example of the Meridian 1 software available for download from the website.

- **Option 11C/11C Mini:** provides software and related General Release Bulletins.
- **Option 51C, 61C, and 81C:** system software, install disks, related MDCSs, and related documentation for all CPU types.
- **Network Management (MAT/OTM):** including system software, updates, PEPs, and related documentation.
- **Meridian Internet Telephony Gateway ITG; IP Telephony; IP telecommuter:** software and documentation for products such as ITG Trunk and Line side applications.
- **Meridian Integrated Products, including MIRAN, MICA, MICB, MIVS and MIPCD.**

### Who has access to the web site?

Software distribution is designed for Nortel Networks Distributors and associated technical support personnel. In exceptional circumstances, end customers will be granted access to this site.

### To register for an account:

Nortel Networks has adopted the Common Registration System (CRS). This provides one user I.D. and password to access the service websites such as the Software Distribution and Keycode Retrieval websites.

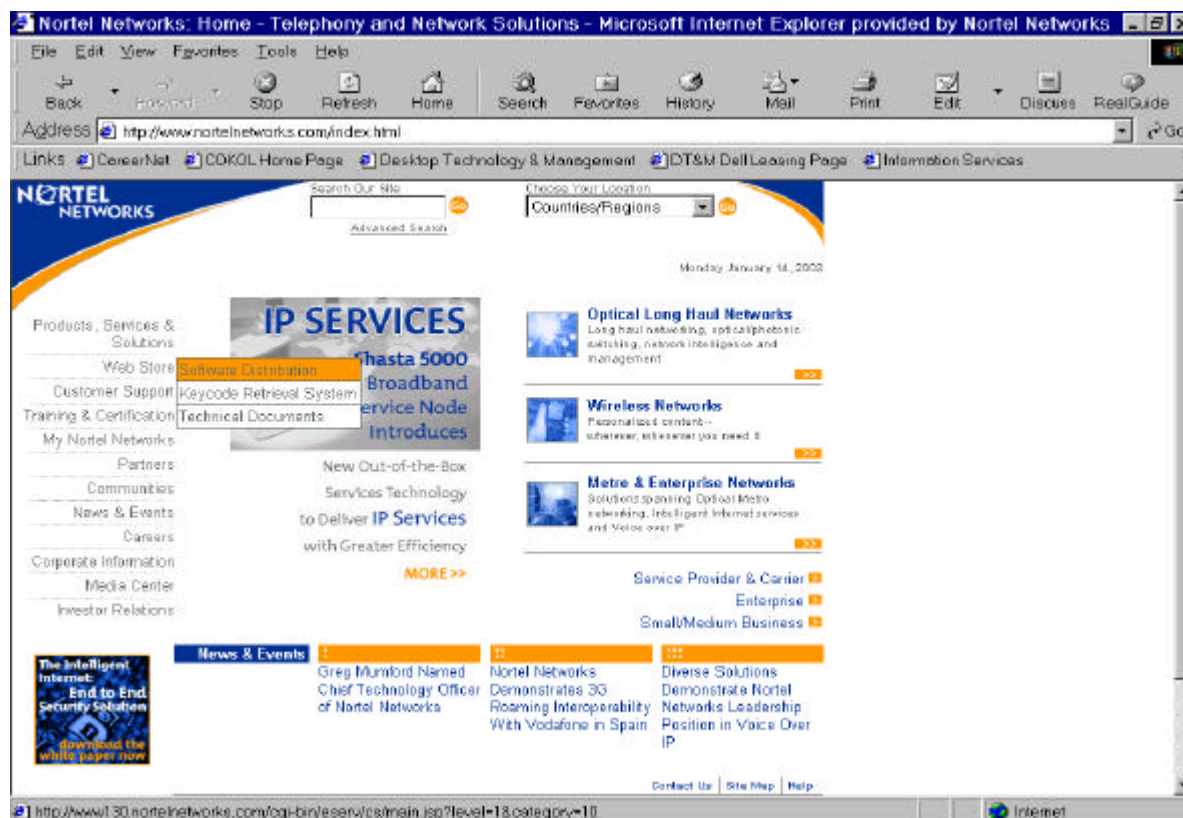
Go to <http://www.nortelnetworks.com/>, to "Customer Support" menu, choose "Register menu. Follow the registration process instructions.

For further details, choose the "Getting Started with Customer Support" under "Support News" banner.

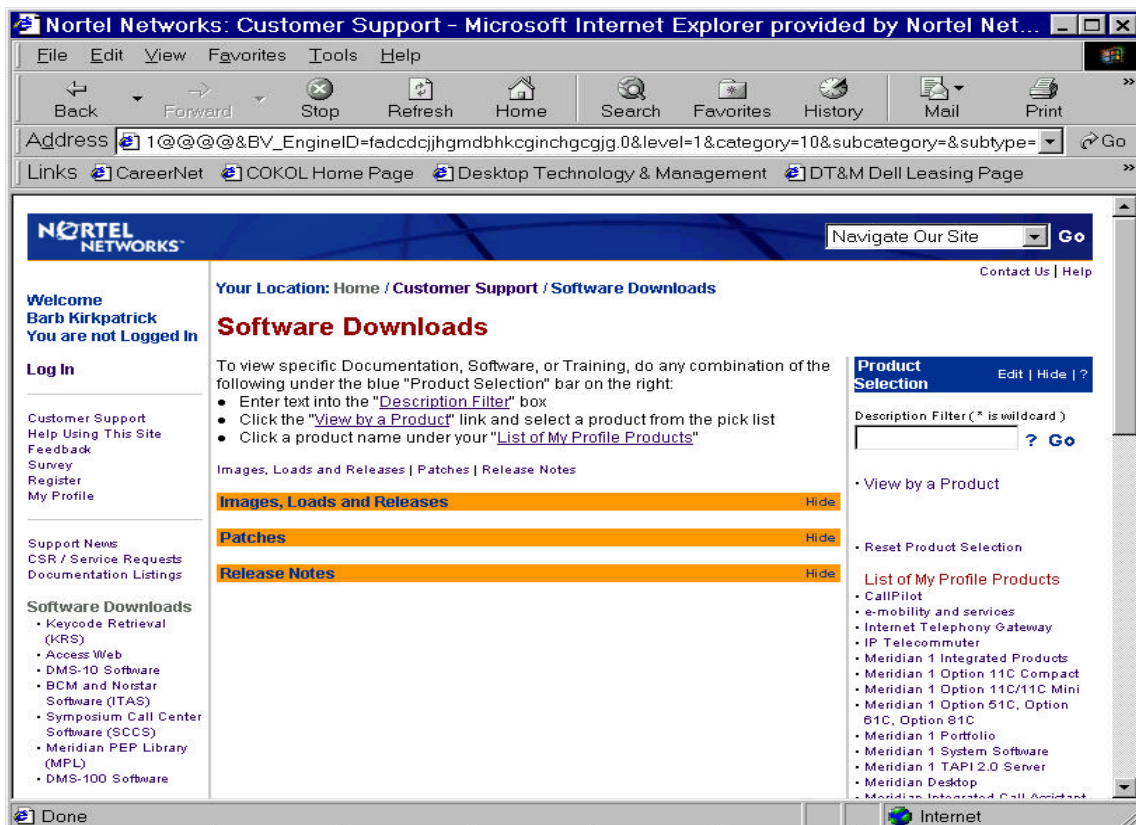
## Software Download Steps:

The software download site can be accessed through the following Customer Support website at: <http://www.nortelnetworks.com>

Choose “Customer Support” – “Software Distribution” menu or “Software Downloads from Customer Support page.”



To access the software as an authorized user, you must go to the “Log in” menu and apply your user I.D. and password. Before Log In, you will be able to view software as a Guest only.



Choose the product required in the Product listing (ie. Option 11C or Option11C Mini). To find the product listing, go to the « **Products** » banner and choose “View by a Product”.

Highlight product(s) required and Save. Click on product under “List of My Profile Products” and you will be able to see all applicable software files.

Find the software file required (search by release may be available for some products). Click on your software selection. Then click on the executable file and/or applicable documentation file and save to your desktop.

(If you do not see any software files available, you may need to go to “My Profile” menu and make sure the Software box is checked.

**Pick Your Services**

**Hide**

[Edit](#) ☐ Documentation Listings

[Edit](#) ☒ Software Downloads

[Edit](#) ☐ Training Listings



**Nortel Networks: Customer Support - Microsoft Internet Explorer provided by Nortel Net...**

File Edit View Favorites Tools Help

Back Forward Stop Refresh Home Search Favorites History Mail Print

Address [BV\\_SessionID=@@@0369887071.1011025991@@@&BV\\_EngineID=fadcdcjhgmdbhkcgjg.0](#) Go

Links [CareerNet](#) [COKOL Home Page](#) [Desktop Technology & Management](#) [DT&M Dell Leasing Page](#)

---

**NORTEL NETWORKS** Navigate Our Site

Contact Us | Help

**Your Location:** Home / Customer Support / Product Select

## Product Select

Active product: Meridian 1 Option 11C/11C Mini

**View by a Product**

Select a product from this list to view Customer Support content for that product. Note that the product selected will not be permanently stored in your profile. Click "Save" to return to the Customer Support site.

**Product Selection** Edit | Hide | ?

Description Filter (\* is wildcard)

• View by a Product

• Reset Product Selection

**List of My Profile Products**

- CallPilot
- e-mobility and services
- Internet Telephony Gateway
- IP Telecommuter
- Meridian 1 Integrated Products
- Meridian 1 Option 11C Compact
- **Meridian 1 Option 11C/11C Mini**
- Meridian 1 Option 51C, Option 61C, Option 81C
- Meridian 1 Portfolio
- Meridian 1 System Software
- Meridian 1 TAPI 2.0 Server

Knowledge Search

FAQ Search  
Solution Search

Customer Support  
Help Using This Site  
Feedback  
Survey  
Register  
My Profile

Support News  
CSR / Service Requests  
Documentation Listings  
Software Downloads  
Training Listings  
Certification

Internet

**Nortel Networks: Customer Support - Microsoft Internet Explorer provided by Nortel Net...**

File Edit View Favorites Tools Help

Back Forward Stop Refresh Home Search Favorites History Mail Print

Address <https://www130.nortelnetworks.com/cgi-bin/eserv/cs/main.jsp> Go

Links [CareerNet](#) [COKOL Home Page](#) [Desktop Technology & Management](#) [DT&M Dell Leasing Page](#)

---

**NORTEL NETWORKS** Navigate Our Site

Contact Us | Help

**Your Location:** Home / Customer Support / Software Downloads

## Software Downloads

Active product: Meridian 1 Option 11C/11C Mini

Images, Loads and Releases | Patches | Release Notes

**Images, Loads and Releases** Hide

Description	Software Type	Release Date
• U.S.A. Release 25.30 (PSWV 70)	Rls 25.30	Aug 30, 2001
• M3900 Global Languages - 25.30 (PSWV 70)	Option 11C - PSWV 70	Aug 30, 2001
• Canada Release 25.30 (PSWV 70)	Rls 25.30	Aug 30, 2001
• CALA Release 25.30 (PSWV 70)	Rls 25.30	Aug 30, 2001
• Asia Pacific Release 25.30 (PSWV 70)	Rls 25.30	Aug 30, 2001

**Top**

**Patches** Hide

Software content for Meridian 1 Option 11C/11C Mini [25.30] is not available in this category. If you require further assistance please reference the regional contact information on the side menu area to the left.

**Top**

**Product Selection** Edit | Hide | ?

Description Filter (\* is wildcard)

• View by a Product

• Reset Product Selection

**List of My Profile Products**

- CallPilot
- e-mobility and services
- Internet Telephony Gateway
- IP Telecommuter
- Meridian 1 Integrated Products
- Meridian 1 Option 11C Compact
- **Meridian 1 Option 11C/11C Mini**
- Meridian 1 Option 51C, Option 61C, Option 81C
- Meridian 1 Portfolio
- Meridian 1 System Software
- Meridian 1 TAPI 2.0 Server

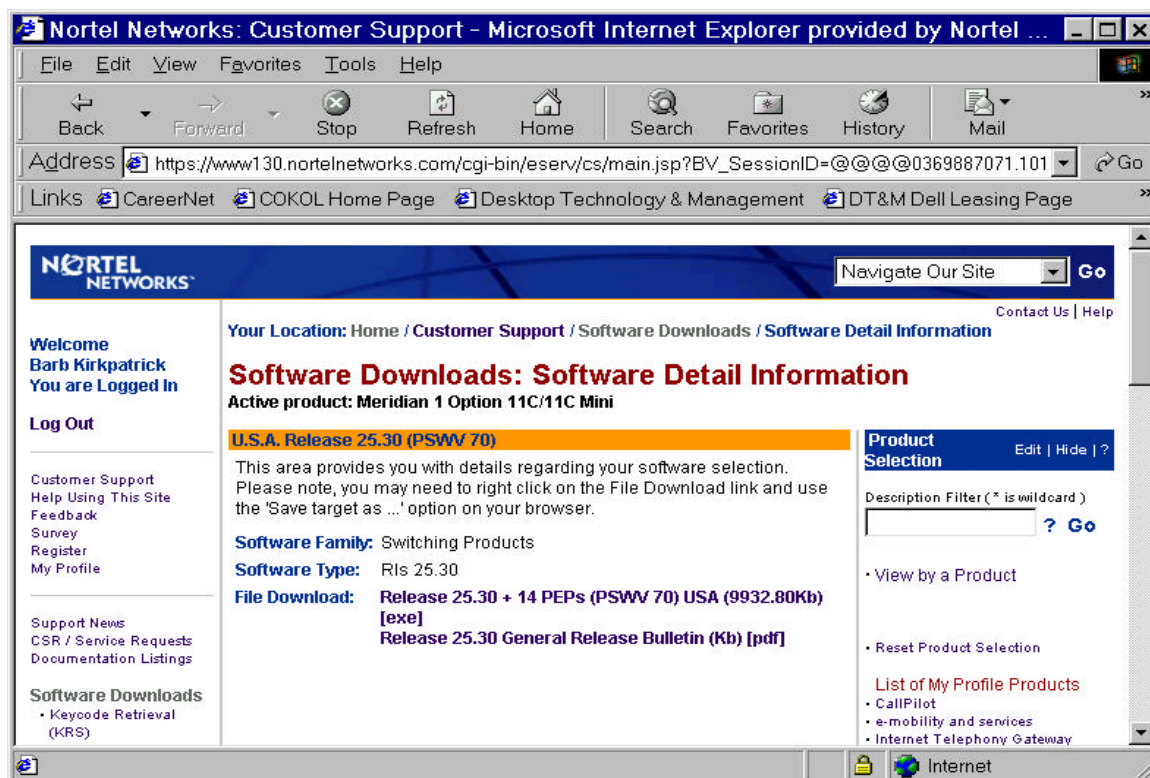
Customer Support  
Help Using This Site  
Feedback  
Survey  
Register  
My Profile

Support News  
CSR / Service Requests  
Documentation Listings

**Software Downloads**

- Keycode Retrieval (KRS)
- Access Web
- DMS-10 Software
- BCM and Norstar Software (ITAS)
- Symposium Call Center Software (SCCS)
- Meridian PEP Library (MPL)
- DMS-100 Software

Internet



For Option 11C Software you will require the PCMCIA Card Programmer. If you do not already have the PCMCIA Card Programmer installed on your P.C., go to "Site Tools" in the pulldown menu from the Option 11C software page and download the Card Programmer (version 0.5 or higher).

The Programmer will prepare and if necessary erase the PCMCIA card (40 Mb or higher), and load the new software to the card. Open the PCMCIA Card Programmer, select the software from the applicable P.C. drive letter in step 1, then select the PCMCIA drive letter in step 2, click on Program PCMCIA card.

The PCMCIA Card Programmer is compatible with Window 95, 98, and Windows NT 4.0 and above. See Read Me file provided with the Tool for manual instructions.

When properly programmed, the software on the PCMCIA card will have the following directory and file structure:

```
bootrom/
dflt_db/
p/
u/
dramos
dramos.sym
dramoscc.sym
```

A readme.txt file may also be present.

You are now ready to put the programmed card into slot A of the System Controller and proceed with the installation procedure.

For large systems software specific instructions, go to “Site Tools” of the pulldown menu on the Option 51C, 61C, 81,81C software page.

## Last Page

---

This page is included to ensure that people with a hard copy of Generic X11 Release 25.40 General Release Bulletin have the complete document. The table of contents must show that this is the actual last page of the document.

Meridian 1

### **Generic X11 Release 25**

Asia Pacific General Release Bulletin – Release 25.40

© 2001 Nortel Networks

All rights reserved.

Information subject to change without notice.

Documentation Release: Standard

Date: February 2002