

Meridian 1

Release 25 General Release Bulletin - Asia Pacific

(For Asia Pacific's Authorised Distributors internal use only)

Publication Number:	Issue 1.0
Product Release :	X11 Release 25.40B
Date :	26 August 2002
Issued by :	Meridian 1/VoIP Product Management Asia Pacific

IMPORTANT:

This document contains Nortel Networks proprietary information and is issued for Asia Pacific's Authorised Distributors' internal use only. Not to be released to the public, including past, present or potential customers

© 2002 Nortel Networks
All right reserved
Meridian 1, Meridian, and SL-1 are trademarks of Nortel Networks.

Title to and ownership of Meridian 1 software shall at all times remain with Nortel Networks. Meridian 1 software shall not be sold outright and the use thereof by the customer shall be subject to the parties entering into agreement as specified by Nortel Networks.

Information contained in this document is subject to change. Nortel Networks reserves the right, without notice, to make changes in equipment or programme components as progress in engineering, manufacturing, or technology may warrant.

Table of Contents

1	Release 25.40B Addendum.....	3
1.1	Simple Network Management Protocol (SNMP) Security Vulnerabilities ...	4
1.2	Keycodes for Release 25.40B.....	4
1.3	Ordering Codes for Release 25.40B	5
1.4	Product Enhancement Package (PEPs) for Release 25.40B.....	6
1.5	Dependency Lists for Release 25.40B	6
1.6	Release 25.40B Reference Product Advisory Bulletins.....	8
2	Introduction	9
2.1	Release 25.40 Quick View	10
2.1	Release 25.40 Quick View	11
2.2	Release 25 Feature Content and MAT/OTM Matrix.....	13
2.3	Release 25 Peripheral Software Downloadable (PSDL) Listing.....	17
3	System Advisements.....	20
3.1	Systems Supported	20
3.2	Feature Interactions	22
3.3	Real Time Impact of Release 25	23
3.4	System Security	24
3.5	Audit routine	24
3.6	CallPilot Distributor Web Site for PEPs Identification.....	24
3.7	Symposium Distributor Web Site for PEPs Identification	24
3.8	Cross Product Dependency List Information.....	25
3.9	System Management	25
3.10	Migration Pathways	27
4	Small System Advisements	28
4.1	Small System Controller and Memory Requirements.....	28
4.2	Software Delivery	29
4.3	Software Conversion	30
4.4	Upgrades to Release 25 from Option 11/11E	30
4.5	Upgrades to Release 25 for Option 11C	30
4.6	Upgrades to Release 25 for Option 11C Mini.....	30
4.7	Basic Configuration Data.....	31
4.8	Use of BKO command in LD 43	31
4.9	Backwards Compatible Daughterboard - NTDK26.....	31
5	Large System Advisements	32
5.1	Call Processor Memory Requirements.....	32
5.2	Upgrading to X11 Release 25.40	34
5.3	Software Delivery	34
5.4	Call Processor CP PII – 256MB Memory Upgrade - Release 25.40	35
5.5	Large System New Global Clock Controller - NTRB53	35

6	Documentation	36
6.1	Release 25.40 Documentation Overview	36
6.2	Documentation Order Codes.....	37
7	Software ISM & Packaging Changes	44
7.1	Software ISM.....	44
7.2	Software Packages	46
8	Feature Overview	49
8.1	Release 25.40 Features Summary.....	49
8.2	Release 25.30 Features Summary.....	57
	Appendix A: Auxiliary Processor Alignment Release 25.40	58
	Appendix B: Electronic Software Distribution	60
	Appendix C: PEPs available for 25.40 GA	66
	Last Page.....	71

1 Release 25.40B Addendum

X11 Release 25.40 software is being up-issued to address identified SNMP security vulnerabilities. Additionally Nortel Networks has taken the opportunity to integrate some critical fixes into the software to improve the quality and robustness of the base X11 code and to improve supportability of the product by a significant reduction in the number of required Product Enhancement Packages (PEPs). Please contact your regional technical support primes for more details.

In order to facilitate easier trialing of our IP Line side products - i2004 IP Telephones and i2050 IP Softphones - 4 Internet Telephone ISMs will be provisioned for all Release 25.40B new system and upgrade orders. With these ISMs, customers could easily try out our IP telephone sets as and when they are ready, without the need to obtain a new Meridian 1 system keycode. When the customers decide to purchase our IP telephones, these 4 ISMs will constitute part of the ISMs to be purchased¹.

So as to allow our customers to benefit from the above-mentioned “Try and Buy” program, as and when current Release 25.40 customers need to expand their existing system capacities (ISMs) or change feature sets, they will upgrade to Release 25.40B, i.e. these changes will require upgrades to the Release 25.40B software.

As with Release 25.40, Release 25.40B software for both Small and Large System types can be downloaded from the Partner's Information Center (PIC) by authorized Distributor Partners at <http://www.nortelnetworks.com/pic>

Other than the changes mentioned above, all other information and advisements associated with the introduction of Release 25.40 software are still relevant, applicable and remain intact for Release 25.40B. Throughout the remainder of this General Release Bulletin beginning from Section 2, all reference to Release 25.40 can simply be substituted to read Release 25.40B

¹ For example: If a customer decides to purchase 10 i2004 IP telephone sets, the customer will need to purchase 2 blocks of 8 Internet Telephone ISMs, i.e. purchase a total of 16 ISMs. The original 4 ISMs will be counted as part of the 16 ISMs purchased.

1.1 Simple Network Management Protocol (SNMP) Security Vulnerabilities

On February 12, 2002, CERT®, a federally funded Internet security watchdog organization, issued a global security advisory concerning SNMPv1. The advisory states that network equipment - including switches, routers, hubs, printers, and operating systems - may be vulnerable to an SNMP-related attack that could cause equipment to fail or allow unauthorized users to take control of it. Simple Network Management Protocol (SNMP) serves as the basis for software tools that enable network administrators to monitor the status and performance, as well as to configure, network systems, for example, enabling prioritization of traffic and network traffic flow control by managing the various elements of the network.

Responding to this advisory Nortel Networks has set up an internal task force to evaluate the situation and where applicable implement appropriate corrective measures. This effort is being done in collaboration with industry participants, software suppliers, and other groups to ensure appropriate actions and means of implementation are available to our customers.

Specific testing indicated that Meridian X11 software contained such SNMP security vulnerabilities as predicted by CERT®. Since corrective action through a Product Enhancement Package (PEP) was not possible the need arose then to up-issue the recently introduced X11 Release 25.40 software to Release 25.40B.

For further information on the SNMP security vulnerabilities please refer to the following Web sites:

<http://www.nortelnetworks.com/corporate/technology/snmpv1.html>
<http://www.cert.org/advisories/CA-2002-03.html> (Section III. Solution)

1.2 Keycodes for Release 25.40B

As we will be provisioning the 4 Internet Telephones ISMs for all new and upgrade orders, a new keycode will be provided for such orders.

1.3 Ordering Process for Release 25.40B

The New System ordering process remains unchanged. For small systems, the Security Device Kit (NTVS803x) contains the R25.40B software. For large systems, the Software Installation Kit (NTZC91BA) contains the R25.40B software.

The System Upgrade Software order process also remains unchanged. The upgrade from R25.40 to R25.40B is considered a Software Issue Upgrade. For small systems, R25.40B software may be downloaded from the web, then matched to a keycode as generated by the Upgrade codes identified in Sections 4 - 8 (11C) / 4 - 6 (Mini) of the Upgrade system software form. For large systems, the Software Installation Kit (NTZC91BA) contains the R25.40B software.

As mentioned above, the default for the Internet Telephone ISM for both small and large systems will be 4.

If the customer does elect to order IP telephony, they are required to order Internet Telephone ISMs as if the system is defaulted to 0. For example: If a customer decides to purchase 10 i2004 IP telephone sets, the customer will need to purchase 2 blocks of 8 Internet Telephone ISMs, i.e. purchase a total of 16 ISMs. The original 4 ISMs will be counted as part of the 16 ISMs purchased.

1.4 Product Enhancement Package (PEPs) for Release 25.40B

With the introduction of Release 25.40B software all reported problems found on this release as well as the 25.40 release that are “patchable” will have PEPs written for both Release 25.40B and Release 25.40.

Additionally all relevant PEPs currently available for Release 25.40, largely those found in Appendix C plus any others that have been developed since Release 25.40 began shipping in February, 2002, have been re-written for Release 25.40B. Availability for these re-written PEPs in the Meridian PEP Library is concurrent with the release of Release 25.40B. As is standard on MPL different releases of the PEPs will be clearly identified as Issue 25.40 and 25.40B.

1.5 Dependency Lists for Release 25.40B

The Release 25.40B Dependency Lists will be made available within co-incident with the Release 25.40B start ship date.

The following is a listing of the PEPs targeted for the Release 25.40B Dependency Lists. For more information, please contact your regional Technical Support primes.

Release 25.40B Dependency List Content

6th August 2002

Total: 40

DepList Category	PEP ID	Machine Type
CORE	MPLR16603	ALL
CORE	MPLR16413	CPP
CORE	MPLR16280	Option 11C
CORE	MPLR16094	Option 11C
CORE	MPLR16095	Option 11C
CORE	MPLR16266	CPP
CORE	MPLR16353	All
CORE	MPLR16354	All
CORE	MPLR12088	All
CORE	MPLR15930	All
CORE	MPLR16058	All
CORE	MPLR16285	All
CORE	MPLR12848	All
Features	MPLR15696	CPP
IP	MPLR16325	All
EuroNet	MPLR15719	All
EuroNet	MPLR12176	All
EuroNet	MPLR12417	All
EuroNet	MPLR12097	All
EuroNet	MPLR15908	All
EuroNet	MPLR16111	All
EuroNet	MPLR11286	All
EuroNet	MPLR15880	All
EuroNet	MPLR13138	All
EuroNet	MPLR16168	All
Int'l Net	MPLR16377	All
CallPilot	MPLR15788	All
CallPilot	MPLR16214	All
CallPilot	MPLR15156	All
CallPilot	MPLR13010	All
SCCS/SECC	MPLR16430	All
SCCS/SECC	MPLR11587	All
SCCS/SECC	MPLR16264	All
SCCS/SECC	MPLR16463	All
SCCS/SECC	MPLR16465	All
SCCS/SECC	MPLR13030	All
SCCS/SECC	MPLR12858	All
SCCS/SECC	MPLR15929	All
SCCS/SECC	MPLR16103	All
SCCS/SECC	MPLR16216	All

Note: The Dependency List Paks are currently available for Release 25.40. The equivalent DepList Paks for Release 25.40B are targeted for development three to four months from the Release 25.40B start ship date.

1.6 Release 25.40B Reference Product Advisory Bulletins

The following Product Advisory bulletins issued for Release 25.40 are also applicable to Release 25.40B:

- AP PM 2002-60 ACD DN/CDN Expansion Feature (ACDE Package 388) Requirements with X11 Release 25.40 Software
- AP PM 2002-62 Service Change to M3900 sets can cause Data Corruption / INI on Generic X11 Meridian 1 Release 25.40

2 Introduction

This document provides an overview of the Global features developed for the Meridian 1 Generic X11 Release 25.40 software. It describes the new features and enhancements offered. It also provides an overview and brief descriptions of the features introduced in Release 25.30 since not all regions rolled out Release 25.30. This document contains feature information that is applicable for all supported Meridian 1 system types.

X11 Global Release 25.40 is a multi-purpose release designed to deliver a single global software stream to all markets. Release 25.40 will be supported on new systems as follows:

As of April 2001, the Option 51C is no longer sold as a new system in Asia Pacific.

Upgrades to 25.40 will be offered to existing Opt. 51C systems provided that no hardware upgrades are required.

The default processor for new Option 61C systems in all regions will be the 68060E processor and for Option 81C will be Call Processor PII (256MB) commercial processor.

Release 25.40 Option 81C new systems will ship with Fiber Network Fabric (FNF) and Call Processor PII (CP PII) with 256MB memory as the default configuration.

For Options 51C, 61C, 81 and 81C details on feature installation and operation, and hardware upgrade procedures, refer to the Nortel Networks Publications (NTPs). Also, please refer to the Software Conversion Procedures (553-2001-320) that are included in your NTP shipment prior to loading this software.

For information on Memory calculations, please refer to the Technical Reference Guide for Small Systems or the Meridian 1 Release 25 Planning and Engineering Guide for Large Systems.

Not all features described in this document are offered in all countries, and as noted within the Bulletin, not all features are supported on all machine types.

Please contact your local Nortel Networks sales representative for more information.

Generic X11 Release 25.40 is supported on:

- Option 11C and Option 11C Mini.

[Refer to Option 11C/Mini Installer's Checklist Release 25.40 (P0941097) for details of any manufactured PEPs with the GA Release of 25.40]

- Options 51C, 61C, 81 and 81C equipped with the Motorola 68060 (NT5D10) CP3, or 68060E (NT5D03) CP4 commercial processors.
- Options 81C equipped with Call Processor PII commercial processors.

[Refer to Manufacture Delivered Customer Solutions (MDCS) Release 25.40 GRB for details of any mandatory PEPs required for Large Systems if applicable]

IMPORTANT

Please read all included advisements, requirements, and enhancements both common, and pertinent to your machine type prior to loading this software.

When references in this document are made to "Release 25", the statements are applicable to Release 25.10, Release 25.15, Release 25.30 and Release 25.40.

2.1 Release 25.40 Quick View

2.1.1 System Management

Release 25.40 is not supported by MAT, only supported by OTM 1.2 or higher.

2.1.2 Software Delivery

Release 25.40 uses the same software delivery vehicles as all other issues of Release 25.

Refer to Appendix B, "Electronic Software Distribution (ESD)" for the new electronic software download website.

2.1.3 Software Migration Pathway

Release 25.40 supports same migration paths as Release 25.30, 25.15 and Release 25.10.

2.1.4 Memory Requirements

Release 25.40 Small systems memory requirements are the same as all other issues of Release 25.

A new blank software daughterboard NTKK25AA is being introduced in Sept. 01 and both NTKK25AA and NTKK13AA are supported on Release 25.40.

Release 25.40 Option 51C-81C memory requirements are the same as Release 25.15 & 25.30; Release 25.40 introduced Memory upgrade for Option 81C CP PII to 256MB, that is mandatory for all 81C CP PII machines with six or more groups. New 81C systems will ship with CP PII with 256MB memory.

2.1.5 Supported Machine types

Release 25.40 is supported by the same machine type as Release 25.15 & 25.30; however Option 51C is no longer sold as a new system.

2.1.6 PE/EPE Support

Release 25.40 supports the same PE/EPE equipment as all other issues of Release 25

2.1.7 New ISM and software Packages

Release 25.40 introduced six new Software Packages and one new ISM. Refer to (Software ISM & Packages changes) section of this Bulletin for details.

2.1.8 Documentation changes for Release 25.40

Meridian documentation suite has been updated to include Release 25.40 new features.

Additional restructure and quality enhancements of the suite will include the introduction of new binders, merging and discontinuing of some documents.

A cross-reference chart of discontinued books as well as merged content will be generated to help users understand the changes.

Refer to the Documentation section of this bulletin for details.

2.2 Release 25 Feature Content and MAT/OTM Matrix

Feature/Product	11C Mini	11C	51C	61C	81	81C	25.10	25.15	25.30	25.40	MAT/OTM Mandatory Requirement
System Features & Processor, Memory and Clock Enhancements											
Fiber Network Fabric (FNF)					X	X		X	X	X	No
Call Processor PII (CP PII)						X		X	X	X	No
Inventory Reporting Phase 2	X	X	X	X	X	X	X	X	X	X	No
Option 11C/11C Mini IP Expansion	X	X							X	X	No ^{2,3}
Scheduled Electronic Lock	X	X	X	X	X	X			X	X	No
Attendant Announcement	X	X	X	X	X	X				X	No
ACD DN Expansion ⁶						X				X	No
MISP & DPNSS Support for IP Expansion ⁹	X	X								X	No
Autonegotiation on IP Expansion	X	X								X	No
CP PII Memory Enhancement Option 81C (256MB)						X				X	No
Large System New Clock Controller (NTRB53AA)			X	X	X	X	X	X	X	X ⁵	No

Feature/Product	11C Mini	11C	51C	61C	81	81C	25.10	25.15	25.30	25.40	MAT/OTM Mandatory Requirement
Networking and Internet Telephony Gateway											
Internet Telephony Gateway ITG Trunks 2.0	X	X	X	X	X	X	X	X	X	X	6.67.04 /1.0 or higher
D-Channel Expansion					X	X	X	X	X	X	No
Private to Public CLID Conversion	X	X	X	X	X	X	X	X	X	X	No
ISDN & QSIG Enhancements and Regulatory requirements											
QSIG Message Waiting Indication	X	X	X	X	X	X				X	No
QSIG Enhancements	X	X	X	X	X	X				X	No
Agent Greeting	X	X	X	X	X	X		X	X	X	No

Feature/Product	11 C MINI	11C	51C	61C	81	81C	25.10	25.15	25.30	25.40	MAT/OTM Mandatory Requirement
Desktop and IP Telephone											
M3900 Enhancements (Release 25.10)	X	X	X	X	X	X	X ¹	X	X	X	No
M3900 – Corporate Directory	X	X	X	X	X	X		X	X	X	6.67.07 /1.0 or higher
M3900 – Virtual Office	X	X	X	X	X	X		X	X	X	No
ITG Line-Side 2.0 & i2004 Internet Telephone	X	X	X	X	X	X			X ⁴	X	6.67.07 /1.0 ²
ITG Line-Side 2.2& i2050 Soft Phone⁸	X	X	X	X	X	X				X ⁸	OTM 1.2
M3900 Productivity Enhancement⁷	X	X	X	X	X	X				X	No
M3900 Virtual Office Enhancement⁷	X	X	X	X	X	X				X	No
M3904 Full Duplex Handsfree (FDHF)⁷	X	X	X	X	X	X				X	No
M3900 Phase III Enhancement⁷ (Release 25.40)	X	X	X	X	X	X				X	No
Infrastructure, Tools and Keycode Enhancements											
Dynamic PSDL Partitioning (DPSDL)	X	X	X	X	X	X				X	No
PDT Password Enhancement	X	X	X	X	X	X				X	No
PDT Access Log Enhancement	X	X	X	X	X	X				X	No
Keycode Enhancement	X	X	X	X	X	X				X	No

Feature/Product	11 C MINI	11C	51C	61C	81	81C	25.10	25.15	25.30	25.40	MAT/OTM Mandatory Requirement
Features Enhancements (Not Applicable all regions)											
Business Network Express	X	X	X	X	X	X		X	X	X	No
MDECT 2000 MSMN	X	X	X	X	X	X	X	X	X	X	No
CLID on Analog Trunks (Hong Kong only)	X	X	X	X	X	X	X	X	X	X	No
New Wireless Visitor ISM	X	X	X	X	X	X				X	No
Singapore ISDN Enhancement (Singapore only)	X	X	X	X	X	X				X	No
SDID number as CLID for EISDN	X	X	X	X	X	X				X	No
Network Break-in And Force Disconnect	X	X	X	X	X	X				X	No

Notes:

1. M3900 Enhanced Flash Download requires:
Release 25.10 Plus MDCS or Manufacture Patches OR Release 25.15 or higher.
2. The OTM 1.01 upissue or MAT 6.67 update disk (ITGL content) is required to support Internet Telephony Gateway Line-Side ITGL in Expansion cabinet in survival mode with Option11C/Mini IP Expansion.
OTM 1.2 is supporting Release 25.40 features; **MAT is NOT supported on Release 25.40 or later**
3. MAT 6.67.07 plus update disk or OTM 1.0 upissue (1.01) is required to support ITG in expansion Cabinet with Release 25.30.
4. i2004 Internet Telephone requires :
Release 25.15 Plus Patches, Release 25.30 Plus MDCS or Release 25.40
5. New Large System Clock Controller NTRB53 requires Release 25.40 in order to download New Firmware, Existing clocks continue to be supported on Release 25.40, and the new clock controller NTRB53 is backward compatible with Releases 19 to 25. New Clock H/W will not be available until Q2 2002. Please look for Product Bulletins announcing H/W availability
6. Requires Option 81C with CP PII, Applications may require updating in order to account for additional ACD DN's
7. Refer to M3900 Phase III Product Bulletin for details of Release 25.40 M3900 Enhancements.
8. ITG Line-Side 2.2& i2050 Soft phone will be available no earlier than March 6, 2002. A specific market notice will be sent out to confirm availability.
9. MISP and DPNSS support for IP expansion will be on control release with the introduction of Release 25.40

2.3 Release 25 Peripheral Software Downloadable (PSDL) Listing

Loadware	Release 25.10 Small / Large PSWV 19/36	RELEASE 25.15 SMALL / LARGE PSWV 33/38	Release 25.30 Small / Large PSWV 53/70	Release 25.40 Small / Large PSWV 77/77
LCRI	LOADAA02	LOADAA02	LOADAA02	LOADAA02
XNET	LOADAC23	LOADAC23	LOADAC23	LOADAC23
XPEC	LOADAC35	LOADAC35	LOADAC38	LOADAC38
FNET	LOADAA06	LOADAA06	LOADAA06	LOADAA06
FPEC	LOADAA07	LOADAA07	LOADAA07	LOADAA07
MSDL	LOADAJ70	LOADAJ70	LOADAJ70	LOADAJ71
ASYN	LOADAH50	LOADAH50	LOADAH50	LOADAH51
DCH1	LOADAJ70	LOADAJ70	LOADAJ70	LOADAJ71
MLNK	LOADAK80	LOADAK80	LOADAK80	LOADAK81
BRIL	LOADAK81	LOADAK81	LOADAK81	LOADAK82
BRIT	LOADAK80	LOADAK80	LOADAK80	LOADAK81
MISP	LOADAJ70	LOADAJ70	LOADAJ70	LOADAJ71
MPHA	LOADAH50	LOADAH50	LOADAH50	LOADAH51
BRSC	LOADAJ70	LOADAJ70	LOADAJ70	LOADAJ71
BBRI	LOADAH52	LOADAH52	LOADAH52	LOADAH53
PUPE	LOADAK80	LOADAK80	LOADAK80	LOADAK82
BRIE	LOADAK81	LOADAK81	LOADAK81	LOADAK82
ISIG	LOADAA31	LOADAA31	LOADAA31	LOADAA32
SWE1	LOADBA49	LOADBA49	LOADBA49	LOADBA49
UKG1	LOADBA46	LOADBA46	LOADBA46	LOADBA46
AUS1	LOADBA46	LOADBA46	LOADBA46	LOADBA46
DEN1	LOADBA46	LOADBA46	LOADBA46	LOADBA46
FIN1	LOADBA46	LOADBA46	LOADBA46	LOADBA46
GER1	LOADBA50	LOADBA50	LOADBA50	LOADBA50
ITA1	LOADBA46	LOADAA49	LOADAA49	LOADAA50
NOR1	LOADBA46	LOADBA46	LOADBA46	LOADBA46
POR1	LOADBA46	LOADBA46	LOADBA46	LOADBA46
DUT1	LOADBA46	LOADBA46	LOADBA46	LOADBA46
EIR1	LOADBA46	LOADBA46	LOADBA46	LOADBA46
SWI1	LOADBA51	LOADBA51	LOADBA51	LOADBA51
BEL1	LOADBA46	LOADBA46	LOADBA46	LOADBA46

Loadware	Release 25.10 Small/Large PSWV 19/36	Release 25.15 Small/Large PSWV 33/38	Release 25.30 Small/Large PSWV 53/70	Release 25.40 Small/Large PSWV 77/77
SPA1	LOADBA46	LOADBA46	LOADBA46	LOADBA46
NET1	LOADBA48	LOADBA48	LOADBA48	LOADBA48
FRA1	LOADBA49	LOADBA49	LOADBA49	LOADBA49
CIS1	LOADBA46	LOADBA46	LOADBA46	LOADBA46
ETSI	LOADBA47	LOADBA47	LOADBA47	LOADBA47
E403	LOADBA07	LOADBA07	LOADBA07	LOADBA07
N403	LOADBA05	LOADBA05	LOADBA05	LOADBA05
JTTC	LOADAC08	LOADAC08	LOADAC08	LOADAC08
TCNZ	LOADAA13	LOADAA13	LOADAA13	LOADAA13
AUBR	LOADAA13	LOADAA13	LOADAA13	LOADAA13
AUPR	LOADAA04	LOADAA04	LOADAA04	LOADAA04
HKBR	LOADAA06	LOADAA06	LOADAA06	LOADAA06
HKPR	LOADAA08	LOADAA08	LOADAA08	LOADAA08
SING	LOADAA14	LOADAA14	LOADAA14	LOADAA15
THAI	LOADAA07	LOADAA07	LOADAA07	LOADAA07
NI02	LOADAB17	LOADAB17	LOADAB17	LOADAA21
T1IS	LOADAA09	LOADAA09	LOADAA09	LOADAA10
T1ES	LOADAA09	LOADAA09	LOADAA09	LOADAA09
ESGF	LOADAA19	LOADAC20	LOADAC20	LOADAC22
ISGF	LOADAA17	LOADAC18	LOADAC18	LOADAC20
TEGF	LOADAA18	LOADAC19	LOADAC19	LOADAC22
TIGF	LOADAA16	LOADAC17	LOADAC17	LOADAC19
INDO	LOADAA06	LOADAA06	LOADAA06	LOADAA06
JAPN	LOADAA15	LOADAA15	LOADAA15	LOADAA15
MSIA	LOADAA04	LOADAA04	LOADAA04	LOADAA04
CHNA	LOADAA03	LOADAA03	LOADAA03	LOADAA04
INDI	LOADAA03	LOADAA03	LOADAA03	LOADAA03
PHLP	LOADAA02	LOADAA02	LOADAA02	LOADAA02
TAIW	LOADAA03	LOADAA03	LOADAA03	LOADAA03
EAUS	LOADAA01	LOADAA01	LOADAA02	LOADAA02
EGF4	LOADAA04	LOADAC05	LOADAC05	LOADAC07
DCH3	LOADAA09	LOADAA09	LOADAA09	LOADAA09
PUP3	LOADAA09	LOADAA09	LOADAA09	LOADAA09
T1E1	LOADAA11/15	LOADAA11/15	LOADAA11/15	LOADAA15
DITI	LOADAA33/34	LOADAA33/34	LOADAA33/34	LOADAA34
CLKC New Global Large System Clock [NTRB53]	NA	NA	NA	LOADAA06

Loadware	Release 25.10 Small/Large PSWV 19/36	Release 25.15 Small/Large PSWV 38/33	Release 25.30 Small/Large PSWV 53/70	Release 25.40 Small/Large PSWV 77/77
M3900 Loadware	M3900 Phase II (M3905 Phase I)	M3900 Phase II (M3905 Phase I)	M3900 Phase II (M3905 Phase I)	M3900 Phase III
N.A./Global Languages Set:				
M3902	LOADAA36	LOADAA40	LOADAA40	LOADAA80
M3903	LOADAA45	LOADAA51	LOADAA52	LOADAA80
M3904	LOADAA41	LOADAA46	LOADAA46	LOADAA83
M3905	LOADAA27	LOADAA32	LOADAA32	LOADAA82

3 System Advisements

In this document, Small Systems refer to the Option 11C and Option 11C Mini. Large Systems refer to the Option 51C, 61C, 81 and 81C machine types. System Advisements are applicable to all System Types.

Where references are made to Release 25, the statements are applicable to Release 25.10, 25.15, 25.30 and 25.40.

3.1 Systems Supported

Generic X11 Release 25 supports the following machine types:

- Meridian 1 Option 11C
- Meridian 1 Option 11C Mini
- Meridian 1 Option 51C *, 61C, 81 and 81C
- Meridian 1 Option 81C equipped with Call processor PII

Note *: Option 51C is no longer sold as a new system, however software-only upgrades to Release 25.40 will be offered to existing Option 51C systems.

3.1.1 PE and EPE Support

X11 Release 25.40

CP3 (68060) and CP4 (68060E)

Release 25.40 supports the same PE/EPE equipment as all other issues of Release 25 (i.e. Releases 25.10, 25.15, 25.30) and the same as Release 24.25.

A very limited number of sites running release 25.10 have experienced sporadic digital set operation when combined with older PE and EPE hardware. This issue is related to the occasional loss of system messages between the CPU and the set. Release 25.15 and later contains a Message Buffering solution to address this issue.

PE and EPE hardware will be supported on X11 Release 25 subject to the following guidelines and limitations.

- CP3 (68060) and CP4 (68060E) Systems - EPE supported subject to guidelines listed below.
- CP PII (Pentium®) System does not support PE or EPE cards.

System Upgrade - CP3, CP4 - Guidelines

Due to differences in processing speeds of the CP3 and CP4 processors and EPE hardware, there are certain Customer Data Configurations that may be susceptible to performance degradation of Telephone sets connected to EPE. These are:

- Having the same Multiple Appearance Directory Number (MADN) on Telephones connected to the same Digital Line Card (DLC).
- Group Call configurations where the target sets are on the same Digital Line Card.
- Calling Party Name Display- longer names increase the potential for problems.
- Numbering schemes where Directory Number Expansion is used.

To ensure optimum performance, the above configurations should be avoided. In the event that this is not possible or practical, Nortel Networks advises that the EPE be migrated to IPE prior to upgrading to Release 25.

System Upgrade - CP PII

For upgrades to the CP PII processor platform, EPE cards will **not** be supported and will need to be migrated to IPE hardware. This refers to cards that plug into PE and EPE shelves (cards that have 1 1/2" spacing). Some telephone sets, such as SL1 sets (QSUXXX), may have to be replaced in this migration. Cards in the network shelves will continue to be supported. Connections from Networking Equipment to Meridian Mail and Digital Trunk/Primary Rate Interface are therefore not impacted by this requirement and remain supported in this configuration.

X11 Release 26 (when available)

The introduction of this release will no longer support Peripheral Equipment (PE) or Enhanced Peripheral Equipment (EPE) on any Meridian 1 system type.

PE or EPE includes the following:

1. All Peripheral Equipment/Enhanced Peripheral Equipment housed in old style Peripheral Equipment/Enhanced Peripheral Equipment shelves and
2. SL-1 proprietary telephone sets and attendant consoles associated with SL-1 line cards.

Note 1: "QPC" cards housed in CORE/Network shelves will continue to be supported on Release 26. For example, QPC 414 ENET cards will continue to be supported as an interface to Meridian Mail and Digital Trunk Interfaces (DTI) connection even though the card can no longer be used to drive Enhanced Peripheral Equipment (EPE) shelves.

Note 2: In order to allow our customers and distributors the ability to optimize resources during a system or software upgrade, Nortel Networks has not

introduced any changes in X11 Release 26 to prohibit PE and EPE equipment. When a system is upgraded to X11 Release 26, the craftsperson can convert the desktop Terminal Number (TN) to the X11 Release 26 feature set. This eliminates the need to change the TN features and Services twice. Following the TN changes, the new IP shelf can be exchanged and the new desktop equipment installed and tested.

A list of the specific hardware that is impacted with the introduction of X11 Release 26 can be found in AP Product Management Product Bulletin, AP PM 2000-41, "Peripheral Equipment (PE) / Enhanced Peripheral Equipment (EPE) Retirement Notification with Generic X11 Release 26".

3.2 Feature Interactions

Microcellular features (packages 345, 346, 314, 302, 303) are not supported on any Release 25 based and later systems.

SILC and UILC cards were not supported in Option 11C/Mini IP Expansion (IPEX) cabinet for Release 25.30, but are supported with Release 25.40.

Meridian Home Office MHO-II is supported with Release 25.40, but not supported with M3900 Phase III

Remote Office (RO) 1.3 is supported with Release 25.40 but not supported with M3900 Phase III until the upissue 1.3.4 is available.

Release 25.40	M2000	M3900 Phase II [3902,3903,3904]	M3900 Phase III [3902,3903,3904,3905]
Remote Office [RO 1.2]	Supported	Supported	Not supported, continue to use M3900 Phase II or upgrade to RO 1.3.4 when available
Remote Office [RO 1.3.1]	Supported	Supported	Not supported, continue to use M3900 Phase II or upgrade to RO 1.3.4 when available
Remote Office [RO 1.3.4]	Supported	Supported	Supported

Support for telephone sets and the different versions of Remote Office (RO) and Release 25.40 as per the table above.

Remote Office 1.3.4 is a maintenance up-issue to provide full M3900 Phase III compatibility and General availability for Remote Office 1.3.4 will be early March 2002.

3.3 Real Time Impact of Release 25

The real time impact of Release 25 is shown in the following table. These values are based on the average basic calls measurements in combination with the real time impact on some basic market models which make extensive use of key features, such as CPND, CDR, digital trunking and digital sets.

Machine type	Release 24 to 25
11C	6%
CP3: (51C/61C/81/81C)	6%
CP4: (51C/61C/81/81C)	6%

CP4 to CP PII improvement in real time capacity	
CP4 to CP PII: (Option 81C)	210% (= 3.1X)

Recommended Call Register Counts

The following tables detail the recommended Maximum Call Register Counts for Release 25 Call Registers as set out in LD 17, at the “NCR” prompt, after answering “Yes” to the PARM prompt

	11C	51C (CP3 & CP4)	61C (CP3 & CP4)
Recommended Call Register Count	1750	2000	4000

	81/81C (CP3 & CP4)	81C CP PII With 5 or fewer groups	81C CP PII With 6 to 8 groups
Recommended Call Register Count	10000	20000	25000

3.4 System Security

Nortel Networks strongly recommends changing the default system passwords for Meridian 1, Meridian Mail and CallPilot systems during initial installation. These passwords should be changed again when the system is placed in active service. These actions will help deter unauthorized system access which can result in toll fraud or system abuse.

For more information, please refer to the System Security Management NTP [553-3001-302].

3.5 Audit routine

As in the case of previous software releases, it is recommended that the Audit routine (Overlay 44) be specified as the background diagnostic to optimize the system capability to deal with call processing anomalies, especially in large line size and high traffic configurations.

3.6 CallPilot Distributor Web Site for PEPs Identification

Please check on the CallPilot distributor web site for current information on any required PEPs for any given X11 software release.

The web site is at: <https://www21.nortelnetworks.com/MPL>

Please note that this site requires an account and password. If you do not currently have an account and password, and are a CallPilot distributor, please contact your regional sales representative for access to this site.

3.7 Symposium Distributor Web Site for PEPs Identification

Symposium Call Center Server SCCS have all the latest PEPs installed on it from the factory as per details on the SCCS Web Page:

<http://www.nortel-sccs.com/sccs.asp>

3.8 Cross Product Dependency List Information

The Meridian PEP Library now offers a new tool to allow quick identification of PEPs that may be recommended for a particular Application running on a specific Release of X11 software. This Dependency List information has been available on Web MPL for Symposium, CallPilot and Symposium Express since early 2001. X11 Release 25.40 will see the launch of several new Dependency Lists for Feature Groups such as Networking and IP.

The website address for WebMPL access is:

<https://www21.nortelnetworks.com/MPL>

Access to the Meridian PEP Library does require a Distributor account and a password.

3.9 System Management

Customers that utilize third party management systems must ensure that the Management System is compatible with Release 25 software.

MAT 6.6X

MAT Release 6.67.04 supports Generic X11 Release 25.10 and associated features;

MAT Release 6.67.07 supports Generic X11 Release 25.15 and associated features.

MAT Release 6.67.07 plus update disk supports Generic X11 Release 25.30 and associated features

MAT is not supported on Release 25.40 or later, Please contact your sales representative for more information related to upgrade to OTM

To confirm your MAT Release version, open MAT on your PC, in the MAT Navigator Window under Help, select About MAT Application.

For further information on MAT 6.67 please refer to the MAT specific General Release Bulletin, which will be shipped with each MAT order.

OTM 1.x

OTM 1.00 supports Generic X11 Release 25.15 and associated features

OTM 1.01 supports Generic X11 Release 25.30 and associated features

OTM 1.1 delivers additional functionality to manage the Survivable IP Expansion cabinets in the areas of Common Services and Maintenance in both the Windows and Web environment.

OTM 1.2 supports Generic X11 Release 25.40 and associated features.

The following X11 Release 25 Features require MAT 6.6x or OTM 1.0x for configuration - the features cannot be programmed through overlays:

- **ITG Trunks 2.0 with ISDN** - the configuration and maintenance of the IP Telephony Gateway (ITG) card is through the "ITG ISDN Trunks" application in MAT 6.67.04 or later or OTM 1.0.
- **Corporate Directory functionality** (one of the M3900 Digital Telephone Enhancements) - the configuration and maintenance of Corporate Directory requires MAT 6.67.07 or OTM 1.0. For existing MAT 6.67.04 sites, and up-issue to MAT 6.67.07 is required for Corporate Directory.
- **ITG Line Side & i2004 Internet Telephones** - the configuration and maintenance of the IP Telephony Gateway (ITG) IPE card is through the "ITG IP Phones" application in MAT 6.67.07 or OTM 1.0.
- **Option 11C/Mini IP Expansion** - MAT 6.67.07 Plus update disk or MAT 1.01 is required to support ITGL card in the Expansion cabinet in survival mode.

Note:

OTM 1.01 (Optivity Telephony Manager for Meridian) is a system management software product that provides a single point of connectivity to multiple Meridian 1 voice switches, Meridian Mail systems, and other applications.

- OTM supports connectivity over serial, dialup/PPP, or Ethernet.

For more information about OTM 1.x, Release 25 Features that Require System Management please refer to the OTM 1.01, OTM 1.1 and OTM 1.2 General Release Bulletin when available.

3.10 Migration Pathways

3.10.1 Software Conversion

For Options 51C, 61C, 81, 81C, and 81C with CP PII direct software conversion is supported to X11 Release 25 from the following releases:

- X11 Release 19, 20, 21, 22, 23, 24

For Option 11C, automatic conversion is supported directly to X11 Release 25 from the following releases:

- X11 Release 16, 18, 20, 21, 22, 23, 24

For Option 11C Mini, automatic conversion is supported directly to X11 Release 25 from the following release:

- X11 Release 24

For more information on software conversion; refer to Upgrade and Conversion Procedures Document NTP [553-2001-320].

3.10.2 M3900 Digital Telephone Enhancements

The M3900 Digital Telephones have a Flash Memory download capability that allows downloading a new firmware version from the Meridian 1 to the M3900 telephone.

Firmware migration is supported using Flash download from:

Phase 1 M3900 sets (X11 Release 24), to Phase 3 (Release 25.40).

Phase 2 M3900 sets (X11 Release 25.10, 25.15 and 25.30) to Phase 3 (Release 25.40).

Additional migration information related to M3900 Series Enhancements can be found in M3900 Digital Telephone Phase 3 Product Bulletins.

4 Small System Advisements

The following advisements are for small systems (Option 11C and 11C Mini) only.

4.1 Small System Controller and Memory Requirements

4.1.1 Option 11C Mini

The Option 11C Mini comes with 48Mb Total Memory (32 Mb Program Store and 16 Mb C-Drive space) on the Mini System Controller in order to run Release 25 software. The supported Release 25 System Controller card for Option 11C Mini:

- NTDK97AB or NTDK97AC (48 Meg - no memory upgrade needed) Mini System Controller (MSC)
- NTDK20EA or higher Small System Controller (SSC) for Option 11C Mini main and IP Expansion chassis when using IP Expansion.(25.30)

Please ensure that you have upgraded the bootcode on the MSC to NTDK34FA Rel 06 or higher.

Refer to NTP Upgrades Guide - Chapter 15 Use the flash boot ROM utility.

4.1.2 Option 11C

Software Daughter Board Requirements

The Option 11C requires a 48Mb Total Memory (32 Mb Program Store and 16 Mb C-Drive space) in order to run Release 25 Software. This requirement is met with the NTKK13AA or NTKK25AA blank Software Daughterboards.

New orders will receive the new NTKK25AA blank software daughterboard. This card is applicable for software Release 25.30 or higher.

A system upgrading to Release 25 must replace its NTDK21 (32 Mb) or NTDK81 (40 Mb) based software daughterboard, with an NTKK13AA or NTKK25AA (48 Mb) daughterboard.

Please ensure that you have upgraded the bootcode on the SSC prior to upgrading the software daughterboard. To verify the size of the software daughterboard and for installation instructions, refer to NTP upgrade manual Chapter 9.

System Controller Card Requirements

The supported Release 25 System Controller card for Option 11C:

- NTDK20CA or higher Small System Controller (SSC)
- NTDK20EA or higher Small System Controller (SSC) for Option 11C main cabinet when using IP Expansion and NTDK20CA or higher for each Expansion cabinet.(Release 25.30 or later)

An existing Option 11C system equipped with a controller card NTDK20AB can be upgraded to an NTDK20CA with a field upgrade kit NTDK19AA.

As of October 2001, the controller card provided will be NTDK20FA

4.2 Software Delivery

4.2.1 Option 11C Mini

- Pre-Programmed Mini System Controller (MSC) for new systems
- PCMCIA Card for upgrades
- Electronic Software Distribution (ESD)*

4.2.2 Option 11C

- Software daughterboard for new systems
- PCMCIA card for upgrades
- Electronic Software Distribution (ESD)*

* Please Refer to Appendix B for more information related to Electronic Software Delivery for Small Systems via Electronic Software Distribution website

4.3 Software Conversion

4.3.1 Option 11C

Automatic conversion is supported directly to X11 Release 25 from the following releases (Note - not all releases were made available in all markets):

- X11 Release 16, 18, 20, 21, 22, 23, 24

4.3.2 Option 11C Mini

Automatic conversion is supported directly to X11 Release 25 from X11 Release 24.

4.4 Upgrades to Release 25 from Option 11/11E

The Option 11/11E systems running on pre-Release 22 software require a hardware upgrade to Option 11C in order to support Release 25. The Option 11C system offers a menu driven installation and upgrade method. Please refer to Option 11C Installation and or Upgrade Procedures Guide for additional information. Please read the Option 11C NTPs thoroughly before performing any hardware/software changes. All upgrade procedures should be strictly followed step by step.

4.5 Upgrades to Release 25 for Option 11C

The Boot Code on the SSC requires updating before upgrading software to Release 25.40. Refer to the "Small Systems Memory Requirements for Release 25" earlier in this Chapter for the requirements. Updating of the SSC Boot Code is a manual process that uses the Flash Boot ROM Utility. Refer to NTP 553-3021-250 Upgrade procedures, Chapter 13.

4.6 Upgrades to Release 25 for Option 11C Mini

Option 11C Mini was introduced with Release 24 on the NTDK97AA in Asia Pacific. This vintage of the Mini System Controller does not have sufficient memory for Release 25. To upgrade to Release 25 the minimum vintage of MSC is NTDK97AB or higher.

The Boot Code on the MSC requires updating before upgrading software to Release 25. Refer to the "Small System Memory Requirements for Release 25" earlier in this chapter for the requirements.

Updating the MSC Boot code is a manual process that requires a PCMCIA card programmed with Release 25. The upgrade is done using the Flash Boot ROM Utility in LD 143.

Refer to NTP 553-3021-250 Upgrade Procedures Chapter 13.

4.7 Basic Configuration Data

On Release 22.08, the "Basic Configuration" default data option provided only a configuration record and no other customer data. With X11 Release 22.16 and later, the "Basic Configuration" data option is expanded to include default data such as XPECs, Superloops, and other default data blocks. It doesn't include Model sets, routes, TN's etc. For complete default data including model sets etc., choose the Pre-Configured data option.

4.8 Use of BKO command in LD 43

The BKO command is used to backup the customer data to an external data card (blank PCMCIA card) located in slot "B" on the CPU faceplate.

Warning: If the pre-programmed software PCMCIA card is used during BKO operation, the card cannot be used to install software without first removing the backup data, reformatting the disk, and reprogramming with the appropriate software.

4.9 Backwards Compatible Daughterboard - NTDK26

The backward compatible daughterboard allows Option 11/11E/11C two cabinet copper) systems to be upgraded to Release 25 maintaining copper connectivity. The NTDK26 has a hardware key that prevents installation when the ethernet jumper (J7) is installed.

The ethernet jumper plug (J7) on the NTDK20 (Small System Controller) pack MUST be removed before the NTDK26 daughterboard is installed.

Note: Ethernet is not supported in this configuration.

5 Large System Advisements

5.1 Call Processor Memory Requirements

5.1.1 Call Processor CP3, CP4

Release 25 Minimum Memory Requirements for CP3 (68060) or CP4 (68060E) processors:

Release 25 supports Motorola based Call Processors 68060 and 68060E as well as Call Processor PII (for Option 81C only). 68030 and 68040 Call Processors are not supported in Asia Pacific on Release 25. Systems operating on Motorola based Call Processors must meet the following minimum Flash and DRAM memory requirements.

System	Flash Memory Requirement	DRAM Memory Requirement	Total Memory
Option 51C/61C with CP3 or CP4	64 MB	64 MB	128 MB
Option 81C on 68060/68060E with 5 or less Network Groups	64 MB	64 MB	128 MB
Option 81C on 68060/68060E with 6 or more Network Groups	64MB	80 MB	144 MB

Release 25.40 Recommended Memory Requirements for 68060E Processors:

System	Flash Memory Requirement	DRAM Memory Requirement	Total Memory
Option 51C/61C	64 MB	64MB	128 MB
Option 81/ 81C (with or without Fiber Network Fabric)	64 MB	96 MB	160 MB

With X11 Release 25.40, all new Option 61C systems will be equipped with 68060E/160MB Call Processors (NT5D03PB). New Option 81C systems will only be offered with Call Processor Pentium® II CP PII equipped with 256MB memory.

Note: Option 51C will no longer be sold as a new system, however software-only upgrade to Release 25.40 will be offered to existing Option 51C.

Memory Upgrade

The NTZC75AA DRAM Memory Upgrade Kit supports 32 MB DRAM memory upgrade of Call Processors 68060 and 68060E. This kit contains one 32 MB DRAM SIMM and supports the memory upgrade of one call processor card.

NTZC76AA supports optional Flash Memory upgrades. This kit may be used by distributors / customers who wish to standardize on higher flash memory configurations.

The NTZC77 kit contains the anti-static mat and ESD wrist-strap, which is required to perform a memory upgrade; NTZC77AA is not required if the distributor/customer already possesses the anti-static mat and wrist-strap.

5.1.2 Call Processor Pentium® II CP PII

For Option 81C Systems on Call Processor Pentium® II CP PII:

Release 25.40

Option 81C CP PII with 5 or less network groups can continue to use DRAM 128 MB when upgrading to Release 25.40.

Option 81C CP PII with 6 or more network groups **MUST** upgrade their DRAM to 256 MB when upgrading to Release 25.40.

Release 25 Minimum and Recommended Memory Requirements for Pentium® II CP PII:

System	Flash Memory Requirement	DRAM Memory Requirement	Total Memory
Option 81C CPP with 5 or fewer Network group Release 25.30	N/A	128 MB	128 MB
Option 81C CPP with 5 or fewer Network group Release 25.40	N/A	128 MB	128 MB
Option 81C CPP with 6 or more Network group Release 25.40 or later	N/A	256 MB	256 MB

5.2 Upgrading to X11 Release 25.40

For hardware upgrades that require (or elect) call processor upgrades, Call Processor CP4 (68060E) is available for 61C and 81/81C systems.

Where the processor upgrade is to the CP4 (68060E), suggested memory configurations for Call Processor CP4 (68060E) are as per recommended memory configurations in Section 4.1.1.

5.3 Software Delivery

Release 25 Software will be shipped on CD-ROM media only. This means that Release 25 requires an IODU/C (NT5D61) on a system operating with Call Processor 68060 (NT5D10) or 68060E (NT5D03).

For an Option 81C system equipped with Call Processor PII, Release 25 requires a cPCI Multi-Media Disk Unit (NT4N43). The Multi-Media Disk Unit is part of the hardware package for an upgrade to Call Processor PII.

Release 25 software and related documentation such as General Release Bulletins can now be downloaded from the Electronic Software Distribution (ESD) web site for Large and Small Systems.

Refer to Appendix B, "Electronic Software Distribution (ESD)", of this document, for more details.

5.4 Call Processor CP PII – 256MB Memory Upgrade - Release 25.40

The CP PII memory enhancement feature increases the memory to 256MB for new Option 81C system and allows existing systems to upgrade their memory. To upgrade existing CP PII (128MB) hardware; a 256MB memory upgrade kit shall be used with the following order codes:

256 MB CP PII memory upgrade Kit for one CPU only - NT4N19AA / A0856417

Two memory upgrades kits are required to upgrade a system, this feature will not support true redundant mode in a mixed-memory configuration.

Upgraded CP PII CPU Board (A0786611 or A0810496) from 128MB to 256MB will be coded with - NT4N64AA Rel 01

All new CP PII CPU (256MB) will be NT4N64AA Rel 02 / A0844698

CP PII with 256 MB of memory requires X11 Release 25.40 Software, and cannot be used with Release 25.30 or earlier releases.

5.5 Large System New Global Clock Controller - NTRB53

The NTRB53 Global Clock Controller will replace the QPC471H and QPC775F in new 61C and 81C systems.

Existing Clock Controllers QPC471 & QPC775 will continue to function with X11 Software Release 25.40, the new clock controller is not mandatory with Release 25.40.

The NTRB53 Clock controller retains existing functionality and software configuration of the clock remains unchanged.

Release 25.40 Software introduces a PSDL object to allow field upgrades of the clock's firmware.

The NTRB53 new clock controller is compatible with Option 51C, 61C, 81C from X11 Releases 19 and later.

The NTRB53 Clock controller retains existing functionality, but it cannot co-exist with QPC471 or QPC775 in the same system.

The New Clock Hardware will be available after the introduction of Release 25.40.

6 Documentation

6.1 Release 25.40 Documentation Overview

The Release 25 documentation suite has been updated for Release 25.40 to reflect the new content. The changes include:

- What's New for Meridian 1 X11 Release 25.40 Guide - P0942056. This document contains the following information for each of the new features of Release 25.40:
 - Description
 - Operating Parameters
 - Feature Interactions
 - Feature Packaging
 - Feature Implementation
 - Feature Operation
- Meridian Electronic Reference Library (MERL) CD-ROMs will be included with each Release 25.40 software order. The order code is NTLH19AC - A0859697, it will include the application NTP CD-ROM and the Meridian 1 CD-ROM. (The Meridian 1 CD-ROM is no longer separately orderable.)
- Meridian IP Telephony Gateway (ITG) Line2.1 NTP will be part of MERL and will also be available on a separate CD-ROM, the order code for the individual CD-ROM is NTDW81AB - A0868154
- SIPE (DPNSS & MISP) content changes (post Release 25.30) will be added to the appropriate Option 11C and Option 11C Mini guides.
- CPP & FNF information that was in standalone NTP's for Release 25.15 & Release 25.30 has been rolled into the appropriate NTP's in the main suite.
- Library Navigator Release 25.40 (P0942452)
- There is one new coil NTP and four new binder NTPs added to the library:
 - Meridian / Succession Systems Remote Office Guide (Binder)
 - Meridian / Succession Systems Internet Application and Terminals description Guide (Binder)
 - Meridian / Succession Systems Integrated Applications Guide (Binder)
 - Meridian Telephone and Console Description reference Guide (Binder)
 - Meridian / Succession Internet Terminals Description Guide (Coil)

The following items are discontinued with Release 25.40:

- Condensed library
- Spiral binding of I/O Guides
- Meridian 1 CD-ROM NTP (MERL CD-ROM includes Release 25.40 information)
- CP PII Guide (Merged into the appropriate documents in the Reference Library)
- FNF Guide (Merged into the appropriate documents in the Reference Library)
- Meridian 1 X11 Task System Programming guide.
- Meridian 1 X11 Task Fault Clearing task guide.

6.2 Documentation Order Codes

Release 25 Meridian 1 CD-ROM

Description	Release 25.30 PEC CPC Codes	Release 25.40 PEC CPC Codes
Meridian Electronic Reference Library [MERL] Option 11C-81C	NTLH19AB A0835745	NTLH19AC A0859697
Meridian IP Telephony Gateway [ITG] line	NTDW81AA A0806119	NTDW81AC A0870183

Option 11C and 11C Mini Release 25 Documentation

Description	Release 25.30 PEC CPC Codes	Release 25.40 PEC CPC Codes
Option 11C - Coil Package	NTTK31AC A08185245	NTTK31AD A0872793
System Security Management	N/A P0913527	N/A P0949474
Option 11C Planning and Installation	N/A P0915838	N/A P0985656
Option 11C and 11C Mini Fault Clearing Guide	N/A P0915839	N/A P0915839
Option 11C and 11C Mini Central Answering Position Guide	N/A P0910772	N/A P0910772
Option 11C and 11C Mini Customer Controlled Back-up and Restore Guide	N/A P0910773	N/A P0910773
Option 11C and 11C Mini Upgrade Procedures Guide	N/A P0915840	N/A P0949475
Input/Output Administration Guide	N/A P0915832	N/A P0942453
Input/Output Maintenance Guide	N/A P0915833	N/A P0942455
Input/Output System Messages Guide	N/A P0915834	N/A P0942454
Option 11C Survivability	N/A P0919734	N/A P0949476

Description	Release 25.30 PEC CPC Codes	Release 25.40 PEC CPC Codes
Option 11C Mini - Coil Package	NTKG80CG A0818640	NTKG80CH A0872530
System Security Management	N/A P0913527	N/A P0949474
Option 11C Mini Planning and Installation	N/A P0910788	N/A P0910788
Option 11C and 11C Mini Fault Clearing Guide	N/A P0915839	N/A P0915839
Option 11C and 11C Mini Central Answering Position Guide	N/A P0910772	N/A P0910772
Option 11C and 11C Mini Customer Controlled Back-up and Restore Guide	N/A P0910773	N/A P0910773

Description	Release 25.30 PEC CPC Codes	Release 25.40 PEC CPC Codes
Option 11C and 11C Mini Upgrade Procedures Guide	N/A P0915840	N/A P0949475
Input/Output Administration Guide	N/A P0915832	N/A P0942453
Input/Output Maintenance Guide	N/A P0915833	N/A P0942455
Input/Output System Messages Guide	N/A P0915834	N/A P0942454

Description	Release 25.30 PEC CPC Codes	Release 25.40 PEC CPC Codes
Option 11C Mini Fiber Expansion Package	NTTK38AC A0818527	NTTK38AD A0874342
Option 11C Mini Planning and Installation	N/A P0910788	N/A P0910788
Option 11C and 11C Mini Expansion Guide	N/A P0915853	N/A P0915853
Option 11C Survivability	N/A P0919734	N/A P0949476

Option 11C and 11C Mini Optional Documents

Description	Release 25.30 PEC CPC Codes	Release 25.40 PEC CPC Codes
Option 11C and 11C Mini Technical Reference Guide	N/A P0915854	N/A P0942448
Option 11C ISDN BRI Hardware, installation and Maintenance	N/A P0915857	N/A P0942451
Option 11C 1.5 MB DTI/PRI	N/A P0915856	N/A P0942449
Option 11C 2.0 MB DTI/PRI	N/A P0915855	N/A P0942450

Option 51C to 81C Release 25 Documentation

Description	Release 25.30 PEC CPC Codes	Release 25.40 PEC CPC Codes
Global Meridian 1 Reference Library	NTLH02AB A0828803	NTLH02AC A0859721
Meridian 1 X11 Release 25 Library Navigator	N/A P0934461	N/A P0942452
What's New guide- Release 25.40	N/A P0919733	N/A P0942056
Meridian 1 X11 Release 25 Planning and Engineering	NTLH03AA A0804746	NTLH03AB A0859742
Meridian 1 X11 Release 25 System installation	NTLH04AA A0804747	NTLH04AB A0859756
Meridian 1 X11 Release 25 System Maintenance	NTLH04AA A0804747	NTLH04AE A0859838
Meridian 1 X11 Release 25 Upgrade and Conversion Procedure	NTLH05AA A0804748	NTLH05AB A0859763
Meridian 1 X11 Release 25 Remote Services Products Guide	NTLH06AA A0804749	NTLH06AB A0859769
Software Feature Guide	NTLH08AA A0804751	NTLH08AB A0859771
Software System Management	NTLH10AA A0804757	NTLH10AB A0859794
Software Networking	NTLH11AA A0804767	NTLH11AB A0859795
Meridian 1 X11 Release 25 Software Meridian Data Services	NTLH12AA A0804771	NTLH12AB A0859796

Description	Release 25.30 PEC CPC Codes	Release 25.40 PEC CPC Codes
Meridian 1 X11 Release 25 Software Automatic Call Distribution	NTLH13AA A0804775	NTLH13AB A0859798
Hospitality	NTLH14AA A0804777	NTLH14AB A0859799
Attendant PC Guide	N/A	NTLH15AB A0884082
Input/Output Administration Guide	N/A P0915832	N/A P0942453
Input/Output Maintenance Guide	N/A P0915833	N/A P0942455
Input/Output System Messages Guide	N/A P0915834	N/A P0942454

Individual Coil Guides

Description	Release 25.30 PEC CPC Codes	Release 25.40 PEC CPC Codes
Meridian 1 X11 Release 25 Library Navigator	N/A P0934461	N/A P0942452
Input/Output Administration Guide	N/A P0915832	N/A P0942453
Input/Output Maintenance Guide	N/A P0915833	N/A P0942455
Input/Output System Messages Guide	N/A P0915834	N/A P0942454
System Security Management	N/A A0913527	N/A P0949474
Meridian 1 X11 Integrated Voice Services	N/A P0909573	N/A P0909573
Meridian 1 X11 Release 25 NT5D61 IODU/C Reference Guide	N/A P0912861	N/A P0912861
Meridian 1 X11 Release 25 Call Processor Card Field Memory Upgrade	N/A P0912862	N/A P0912862
Meridian 1 X11 Release 25 Meridian Integrated Conference Bridge Description, Installation administration and Maintenance	N/A P0912865	N/A P0912865
Meridian 1 X11 Release 25 Meridian Integrated RAN Description, Installation and Operation	N/A P0912866	N/A P0912866
Meridian 1 X11 Release 25 Meridian Integrated Personal Call Director	N/A P0914163	N/A P0914163
Meridian 1 X11 Release 25 Meridian Internet Telephony Gateway [ITG] Trunk 1.0 Basic pre-Trunk Signaling Description, Installation and Operation	N/A P0912863	N/A P0912863
Meridian 1 X11 Release 25 Meridian Internet Telephony Gateway [ITG] Trunk 2.0/ISDN Signaling Link [ISL] Port Description, Installation and Maintenance	N/A P0912540	N/A P0912540
Meridian 1 X11 Meridian Internet Telephony Gateway [ITG] Line Card 1.0 IP Telecommuter Description, Installation and Operation	N/A P0912864	N/A P0912864

Introductory Task Guides

Description	Release 25.30 PEC CPC Codes	Release 25.40 PEC CPC Codes
Meridian 1 X11 Task Basic Telecom Management Guide	N/A P0912434	N/A P0912434
Meridian 1 X11 Task Network Planning Guide	N/A P0912435	N/A P0912435

Optional Documents - Binders

Description	Release 25.30 PEC CPC Codes	Release 25.40 PEC CPC Codes
Meridian 1 X11 Release 25 DPNSS1	NTKF79AA A0788073	NTKF79AB A0859800

New Documents with Release 25.40

Description	Release 25.40 PEC CPC Codes
Meridian / Succession Systems Remote Office Guide	NTLH02AF A0860307
Internet Applications and Terminals Description Guide	NTLH02AH A0860309
Meridian 1 X11 Release 25 Meridian Integrated Applications	NTLH02AJ A0860311
Meridian 1 X11 Release 25 Telephones and Console Description Reference Guide	NTLH02AG A0860308
Internet Telephony Gateway [ITG] Line 2.2 Card Description, Installation and Operation	N/A P0986457
Internet Terminals Description Guide	N/A P0986458

Data Sheets

Description	Release 25.30 PEC CPC Codes	Release 25.40 PEC CPC Codes
Meridian 1 X11 Release 25 Data sheet Note: Data sheets are not available in all regions.	N/A P0907149	N/A P0944014

Retired Documents for Meridian 1 X11 Release 25.40

Description	Release 25.30 PEC CPC Codes	Note
Meridian 1 X11 Release 25 Software Input/Output Guides	NTLH09AB A0818140	Binding will be done in binder only (no spiral)
Global Release 25 CD-ROM Meridian 1 Reference Library Option 11C-81C	NTLH01AC A0828806	MERL CD includes Release 25.40 information
Meridian 1 X11 Release 25 Meridian Condensed Library	NTLH17AB A0828804	Discontinued.
Meridian 1 X11 Release 25 Call Processor PII Reference Library	NT5F36AA A0786997	Included in Meridian 1 Reference Library
Meridian 1 X11 Release 25 Fiber Network Fabric FNF Reference Guide	NT5F37AA A0786998	Included in Meridian 1 Reference Library
Meridian 1 X11 Release 25 Call Processor PII, FNF Description, Installation and Administration Guide	N/A P0914249	Included in Meridian 1 Reference Library
Meridian 1 X11 Release 25 Call Processor PII, FNF Software Upgrade Guide	N/A P0914248	Included in Meridian 1 Reference Library
Meridian 1 X11 Release 25 Task System Programming Guide	N/A P0912433	Discontinued.
Meridian 1 X11 Release 25 Task Fault Clearing Guide	N/A P0912436	Discontinued.

7 Software ISM & Packaging Changes

7.1 Software ISM

7.1.1 New ISM Counters

With the introduction of X11 Release 25.10, there were six new ISM Parameters and two changed ISM parameters for all systems.

There was one new ISM in RELEASE 25.30 for small systems only.

Release 25.40 introduces one new ISM Parameter.

Release 25 ISM Parameters

ISM Parameter	Systems	Release Introduced
ITG ISDN Trunks	All	25.10
Internet Telephones [*] NTZC82AA / A0804340	All	25.15 + Patches Or 25.30 + MDCS
Attendant Consoles	All	25.10
Wireless Visitor	All	25.40
CLASS Telephones	All	25.10
Phantom Ports	All	25.10
Data Ports	All	25.10
Traditional Trunks	All	25.10
Analogue Telephones	All	Changed with 25.10
Digital Telephones	All	Changed with 25.10
Survivability NTSF8720 / A0784530	Small system Only	25.30

Note: Internet Telephones ISM Parameter is used for both i2004 and i2050

7.1.2 Changes to Existing ISM Counters

With the introduction of Release 25, some ISMs will be counted differently. The following table provides a list indicating how the various peripherals (Lines, Trunks and Sets) are counted before and with the introduction of Release 25.

A TN configured in Meridian 1	Existing ISM (*)	ISM in R25 (*)
ACD Analogue Set	ACD Agents and Analogue Telephones	ACD Agents and Analogue Telephones
ACD Digital Set	ACD Agents and Digital Telephones	ACD Agents and Digital Telephones
Analogue AST and ACD Set	AST, Analogue Telephone and ACD Agents	AST, Analogue Telephone and ACD Agents
Analogue AST Set	AST and Analogue Telephones	AST and Analogue Telephones
Analogue Data Set (FAXA)	Analogue Telephones	Data Ports
Analogue Set	Analogue Telephones	Analogue Telephones
ATA Set (VCE)	Digital Telephones	Digital Telephones
Attendant Console	None	Attendant Consoles
CLASS Set	Analogue Telephones	CLASS Telephone
Digital AST and ACD Set	AST, Digital Telephone and ACD Agents	AST, Digital Telephone and ACD Agents
Digital AST Set	AST and Digital Telephones	AST and Digital Telephones
Digital Data Set	Digital Telephones	Data Ports
i2004 Telephone Set	None	Internet Telephones
Line-Side T1/E1	Analogue Telephones	Analogue Telephones
MCA Set	Digital Telephones	Data Ports
MCMO (CT2) Set	Wireless Telephones	Wireless Telephones
MCU	Digital Telephones	Data Ports
MDECT Set	Wireless Telephones	Wireless Telephones
Meridian Integrated ACD Port	ACD Agents and Digital Telephones	ACD Agents and Digital Telephones
Meridian Mail / CallPilot ACD Port	None	None
PC console	None	Attendant Consoles
Phantom Analogue Set	None	Phantom Ports

A TN configured in Meridian 1	Existing ISM (*)	ISM in R25 (*)
Phantom Digital Set	Wireless Telephones	Wireless Telephones
R232 DAC	Digital Telephones	Data Ports
R422 DAC	Digital Telephones	Data Ports
ITG 1.0 Trunk	None	ITG ISDN Trunks
ITG 2.0 Trunk	None	ITG ISDN Trunks
1.5 Mb DTI Trunk	None	Traditional Trunks
1.5 Mb PRI Trunk	None	Traditional Trunks
2.0 Mb DTI Trunk	None	Traditional Trunks
2.0Mb PRI Trunk	None	Traditional Trunks
Analogue Trunk	None	Traditional Trunks
BRI Trunk	None	Traditional Trunks
IDA Trunk	None	Traditional Trunks
ISA Trunk	None	Traditional Trunks
ISL Trunk	None	Traditional Trunks
VNS Trunk	None	Traditional Trunks

7.2 Software Packages

The following tables provide a list of the New and Enhanced Packages introduced in Release 25.40 and Release 25.30, their mnemonics, and their package numbers.

New Packages

Package Name	Package Number & Mnemonic	X11 Software Release	Supported System
IP Connectivity	295 IPEX	25.30	Option 11C & 11 Mini only
Attendant Announcement	384 ATAN	25.40	All
Priority Network Override	389 PONW	25.40	All

Package Name	Package Number & Mnemonic	X11 Software Release	Supported System
M3900 Productivity Enhancements	386 M3900 PROD-ENH	25.40	All
M3900 Virtual Office Enhancements	387 VIRTUAL-OFFICE ENH	25.40	All
ACD DN Expansion	388 ACDE	25.40	Option 81C CP PII only

Enhanced Packages

New Feature	Package Number	Mnemonic	Package Name	Supported System
Dynamic PSDL	0	BASE	Base Software	All
Keycode Enhancement.	0	BASE	Base Software	All
CP PII Memory Enh.	0	BASE	Base Software	81C CP PII
New Large system Global Clock controller	0	BASE	Base Software	Option 51C & 61C & 81C
ITGL 2.2 & i2050	0	BASE	Base Software	All
M3900 Phase III Enh.	0	BASE	Base Software	All
Refine Corporate Directory Search	381	CDIR	M3900 Corporate Directory	All
Virtual Office Speed Dial Capabilities	382	VIRTUAL_OFFICE	M3900 Virtual Office	All

New Feature	Package Number	Mnemonic	Package Name	Supported System
QSIG Message Waiting Indicator	305	QSIG-GF	QSIG Generic Functioning	All
- QSIG Message Waiting Indicator.	316	QSIG-SS	QSIG Supplementary Services	All
- QSIG Call Completion & Call Diversion Interaction Enhancement.				All
- Redirecting Name Display Enhancement for QSIG Call Rerouting.				All
- CLID Enhancement for QSIG Call Diversion				All

8 Feature Overview

8.1 Release 25.40 Features Summary

The following list of features is the preliminary content list for Release 25.40. Please note that individual features may be added or deleted from this list depending upon development, market, or testing conditions.

QSIG Product Improvements

QSIG Call Completion and Call Diversion Interaction Enhancement

This product improvement provides for QSIG – MCDN and QSIG-QSIG gateways, the capability of employing Call Completion (CCBS and CCNR) when QSIG Call Diversion occurs.

CLID Enhancement for QSIG Call Diversion

This product improvement provides for QSIG GF interfaces, the capability of displaying the correct CLID on the calling user's set when the diverted-to user set is rung during QSIG call diversion.

Redirecting Name Display Enhancement for QSIG Call Rerouting

This product improvement provides for QSIG GF interfaces, the capability of displaying the redirecting name on the diverted-to user's set, during QSIG Call Diversion due to Call Rerouting algorithm, when the originating and diverted-to user's are present on the same node.

QSIG Message Waiting Indication

QSIG Message Waiting Indication allows Meridian 1 users, connected to a voice mail system on another vendor's PBX, to get a message waiting indication. This feature provides a means to pass the Message Waiting Indicator across a private QSIG network with Meridian and other vendors' PBXs. In the same way the feature allows a Meridian Mail hosted at a Meridian 1 switch to serve third party PBX users across a QSIG network.

ACD DN/CDN Expansion

The Automatic Call Distribution Directory Number/Control Directory Number (AC DN/CDN) Expansion feature (ACDE Package 388) increases the allowable number of ACD DN and/or CDNs on a Meridian 1 Option 81C CP PII system from 240 to a maximum of 1000 for each customer. The number of customer groups remains at 100 and the system level total of configurable ACD DN/CDNs remains the same at 24,000.

Attendant Announcement

X11 Release 25.40 introduces the Attendant Announcement feature (AANN Package 384) delivers a pre-recorded message for calls terminated on the attendant, attendant queue, redirected to the attendant or night station.

The Attendant Announcement feature provides different announcements based on the state of the call:

- Announcement when terminating to the Attendant (ANAT).
- Announcement when Night service is activated (ANNS)
- Announcement when Call forward No answer to the Attendant (ANFA).
- Announcement when Call forward Busy to the Attendant (ANFB).
- Announcement when Slow Answer Recall to the Attendant (ANSR).
- Announcement on Attendant Extended Calls (ANXC).
- Announcement when Overflowed or Forwarded (ANOF) if customer uses the Attendant Overflow Position (AOP) or Attendant Alternative Answer (AAA) features.

ITG Line side 2.2 & i2050 Software IP Phone

The i2050 Software IP Phone is Windows-Based application that makes your desktop computer a powerful tool for unified voice, data and video communications.

The i2050 Software Phone support the following:

- Traditional telephony features such as Call origination, Call Termination, Conference, Transfer, Hold, and Message waiting indication.
- Dedicated Hold, Release, Answer, Volume, Mute, Navigation and Message Waiting indication keys.
- Macro functions for programming lengthy dialing patterns.
- Powerful directory capabilities; locally stored on the PC or linked to external directories such as LDAP, Outlook, and ACT.
- DHCH-compliant services.
- Nortel Networks USB Audio Kit.
- "One-click" direct dialing from various windows and applications.
- Online help with full index search capabilities.

Survivable IP Expansion – MISP Support & DPNSS

Enable an MISP card to be supported in an Option 11C/11C Mini Survivable IP Expansion cabinet.

Auto Negotiation for SIPE

This enhancement creates a prompt in LD 117 that allows the user to turn on/off auto negotiation. The ability to control Auto negotiation on the Meridian 1 will simplify the installation and support routers and switches where auto-negotiation is turned on.

CP PII Memory Enhancement

Increase the amount of DRAM on the CPP processor from 128 MB to 256 MB. Required for all Release 25.40 and later CP PII Option 81C systems with 6 or more groups.

Large systems New Global Clock Controller

Introduces a new Global clock controller (NTRB53) for Option 51C, 61C, 81 and 81C systems.

The NTRB53 Clock Controller will replace the QPC471H and QPC775F in new systems. Existing Clock Controllers QPC471 & QPC775 will continue to function with X11 Software Release 25.40. The NTRB53 Clock controller retains existing functionality and software configuration of the clock remains unchanged.

Meridian X11 Release 25.40 software introduces a PSDL object to allow field upgrades of the clock's firmware. The NTRB53 new clock controller is compatible with Option 51C, 61C, 81C from X11 Releases 19 and later.

New Wireless Visitors ISM

Introduces a new ISM for MDECT wireless visitors to differentiate them from "home" users.

Singapore ISDN Enhancement

This feature allows the Meridian 1 to interwork properly with Nokia CO switch for the Singapore ISDN interface. It allows the Meridian 1 to automatically restart the ISDN Trunks in the event that the link is torn down and reconnects again.

This Feature is introduced through modification to Singapore Loadware.

This feature is available to Singapore Market only.

Network Break-in and Force Disconnect

The Network Break-in and Force Disconnect feature allows an analog or digital set to perform the following functions:

- Break in to an established two- party call
- Force disconnect an established two-party call

Priority Levels PLEVs (0 to 7) are configured on a set basis, A set can break in or disconnect an established call only if it has a priority level greater than of the wanted and unwanted parties. This feature introduces Priority Network Override (PONW) Package 389.

Dynamic PSDL

Dynamic PSDL will split the current PSDL file into 'individual' product loadware files. Meridian 1 will build the PSDL.rec file dynamically during installation from individual product loadware files. Previously the larger PSDL.rec file was included with the software during loadbuild. This will allow for field replacement of individual loadware files as required. It will also eliminate the duplication of loadware files for M39xx language management. With this functionality only 1 PCMCIA card for small systems is required to deliver the entire language file.

DPSDL provides a vehicle to introduce New Loadware to the field if required in a timely manner, without waiting for Software upissue and avoiding all upgrade related issues such as keycode, ordering codes, system management compatibility and applications compatibility. Prior to the introduction of Release 25.40 (DPSDL Feature) a new X11 Software upissue was required to deliver new loadware upgrade

Keycode Enhancement Feature

The purpose of this enhancement is to modify the dependency between the X11 Software Keycode and the X11 software version release name. Currently, the keycode is linked to the release, issue, and phase letter i.e. 25.27A. The Phase letter (a.k.a. subissue) is used for Beta releases of software.

This enhancement will remove the dependency of the keycode to the phase letter and leaves it linked to the keycode to the release and issue number only. This means that a new keycode will not be required to upgrade between Beta sub-issues of software (i.e. from 25.37B to 25.37C, etc.) as long as there are no changes to the other keycode parameters such as ISM parameters limits or package content. A new keycode will be required when upgrading to a different issue, such as the market Release version 25.40, or if other keycode parameters change.

SDID number as CLID for Euro-ISDN trunk

The SDID functionality will be made available for Euro-ISDN calls with the introduction of Release 25.40. The SDID feature replaces the DN by the DID number of the IDC table in LD 15. This will be enabled for CLID option OPT1 [international calls], OPT2-OPT5 [based on APAC ISDN requirements for international calls]. This enhancement replaces the DN of an analog or digital set or an attendant console with incoming DID-DN. This feature is not applicable to trunks as originator.

PDT Password Enhancement

Allows an authorized Distributor or Nortel Networks Technician to change the diagnostic passwords. The PDT Password enhancement gives administrators the ability to change the level 1 and level 2 PDT passwords. Currently this capability can only be delivered using patch MPLR13326. Starting with Release 25.40 this capability is integrated into the software. With release 25.40 this password will need to be set in order to be able to access PDT.

Refer to X11 System Security Management NTP [553-3001-302]

PDT Access log Enhancement

As remote sessions can potentially occur anywhere on a network with access to the Meridian ELAN, this makes problem investigation much more difficult to coordinate. Potential illegal accesses cannot be easily traced as the offender's login user ID is never output or recorded.

Also, because ELAN accesses are much more popular due to MAT/OTM availability, the file can be filled within hours rather than days.

This enhancement would allow the access log to record the user ID and increase the capacity to handle more entries in the log file.

Refer to X11 System Security Management NTP [553-3001-302].

Release 25.40 Enhanced M3900 Features

Refined Corporate Directory Search

Refined Corporate Directory Search introduces a new "Resume" soft key in the Corporate Directory screen so that the user can resume the keypad entry to enter additional letters to narrow the search further without reentering the letters from the beginning (for M3903, M3904 and M3905).

M3900 CTIA and TAPI

Delivers the M3900 CTIA and TAPI 2.1 service provider (for M3902, M3903, M3904 and M3905).

Headset Support When Handsfree Disabled

Currently, headsets are not supported when handsfree is disabled on an M3900 set. This enhancement will enable end users to use the headset key on their set if the administrator deems it necessary to deny the handsfree class of service (for M3903 and M3904).

Speed Dial Capabilities (Virtual Office)

The current Virtual Office feature enables users to log on to a host set and have their personal profile appear at that set. However, at the present time the configuration of speed call features on a virtual TN is prohibited. The change will be to enable usage of speed dial. (For M3903 and M3904).

Call Forward enhancements

The call forward number is automatically deleted if the user starts entering a new number rather than requiring multiple presses of the delete key (for M3902, M3903, M3904 and M3905).

Password Clear

When the switch issues the Directory/Call Log password reset command, the password is turned off instead of set to "12345678" (for M3903, M3904 and M3905).

Pause in dialing strings

Enables entering 1.5 second pauses in a dialing string. (For M3902, M3903, M3904 and M3905).

31 Digit Predial

Increases number of digits in the dialing strings from 24 to 31 for Call Log, Personal Directory, Redial List, & Predial (for M3902, M3903, M3904 and M3905).

Special Characters

M3900 character set will now include all the special characters defined in the ASCII character set to be used with set-to-set messaging, personal directory, editing feature key labels, etc. (for M3902, M3903, M3904 and M3905).

M3905 Phase III

Delivers most of Release 2 & 3 M3900 features to M3905 with common F/W on M3904 and M3905.

Virtual Office Login Enhancement

Currently only one user can log into Virtual Office at a time, and other users attempting to log in at the same time receive a "system busy, try later" message. This enhancement will increase the number of users that can log on at the same time.

One-button Access Keys

Improvements to the way the Personal Directory, Corporate Directory, Call Log, & Redial List features are accessed (for M3903, M3904 and M3905).

- Call Log and Redial List - One button access via softkeys or feature keys.
- Directory - user can start to conduct a directory search via the dial pad without pressing the Select softkey
- Corporate Directory-Users begin the search without pressing the Select key.

System Initiated Language Selection

M3900 sets on systems in different countries can initialize with a default language other than English. This eliminates the need for system administrators/users to have to go through the language selection option on each set to select a different language (for M3902, M3903, M3904 and M3905).

Set-to-Set Messaging Enhancements

Allows a system administrator to predefine ten messages that can be customized by the administrator to reflect the type of messages most often used by the users. Users can select one message to be sent as their Set-to-Set message and they can edit that one message to whatever they like. The user may only need to modify a small portion of the message to add the correct date/time, etc.. Only one message per set is actually stored in the system. (For M3903, M3904 and M3905)

Erase Callers and Redial List for Virtual Office

Allows the lists to be cleared when a virtual office worker logs out of the host M3900 set (for M3903 and M3904).

Automatic Logout for Virtual Office

Allows the administrator to specify a time in which all idle virtual terminals will be logged out. Also, if a user tries to log into a host terminal, but is still logged into another terminal, the first terminal will be logged out and the user will be allowed to log into the second terminal (for M3903 and M3904).

Full Duplex Handsfree

Delivers a full duplex handsfree cartridge to a new M3904 set.

M3900 Phase 3 Feature/X11 Release 25.40 Compatibility Table

Feature	Feature Package	M3902	M3903	M3904	M3905
Call Forward Enhancements	N/A	X	X	X	X
Password Clear	N/A		X	X	X
Pause in Dialing Strings	N/A	X	X	X	X
31 Digit Predial	N/A	X	X	X	X
Special Characters	N/A	X	X	X	X
Refined Corporate Directory Search	N/A		X	X	X
Headset State Support	N/A		X	X	
Speed Dial Capabilities (Virtual Office)	N/A		X	X	
Virtual Office Login Enhancement	N/A		X	X	
Computer Telephony Integration Adapter (CTIA)	N/A	X	X	X	X
PC Utility Adapter	N/A	X	X	X	X
Full Duplex Handsfree Accessory	N/A			X	
M3905 Phase 3 set	N/A				X
Secondary DN Dialing	N/A		X	X	X
One-button Feature Access Keys	Pkg. 386		X	X	X
Set-to-Set Messaging Enhancements	Pkg. 386		X	X	X
System Initiated Language Selection	Pkg. 386	X	X	X	X
Virtual Office Automatic Logout	Pkg. 387		X	X	
Redial & Callers List Erase (Virtual Office)	Pkg. 387		X	X	

8.2 Release 25.30 Features Summary

Option 11C/Mini IP Expansion

The Option 11C/Mini IP Expansion provides IP interconnection between Option 11C main and expansion cabinets. This IP interconnection enables:

- Increased Digital Trunking Capacity
- Voice Distribution over Campus Data Network via IP Expansion Cabinet
- Survivable Expansion Cabinets

This new feature is applicable to Option 11C and Option 11C Mini systems.

Meridian ITG line-side & i2004 Internet Telephones

The Meridian ITG Line-side offering and i2004 Internet Telephone unifies a number of enterprise-critical communication functions and provides the customer with the benefits of IP Telephony such as simplified management without sacrificing features, reliability or Quality of Service (QoS).

The Scheduled Electronic Lock (SELK)

The Scheduled Electronic Lock (SELK) enhances of the Electronic Lock Feature.

The Scheduled Electronic Lock feature automatically locks telephone sets at predetermined times. These times are defined in the Scheduled Access Restrictions (SAR) database (Overlay 88). SAR group numbers are also defined in LD 88. A maximum of eight scheduled lock times can be assigned to each group.

Night Service Enhancement for BRI Trunks

Night Service Enhancement for BRI Trunks enhances the functionality of the Night Service feature. Night Service allows calls that are normally directed to the attendant to be routed to another defined destination. With the Night Service Enhancement for BRI Trunks feature, a Night Service DN (NITE) or Night Service Group number (NGRP) can be defined for BRI trunks.

Appendix A: Auxiliary Processor Alignment Release 25.40

Auxiliary Processor	Compatibility (Release)
System Management	
Meridian Administration Tools (MAT)	6.6x is supporting Release 25.30 MAT is <u>Not</u> supported on Release 25.40 or later
Optivity Telephony Manager (OTM)	1.2 and later
Messaging	
Call Pilot	1.x
Call Pilot 100/150 for Option 11C/Mini	1.5
Meridian Mail	11.xx - 13.xx
Meridian Mail Card Option	11.xx - 13.xx
Meridian Mail reporter	2.x ^a
Wireless	
Companion DECT	45000302 or later (Not downloaded from Meridian)
Companion	3.xx - 7.xx (7.xx required for Enhanced Capacity)
Wireless IP Gateway	1.1x
Remote Product	
9150	1.3 or higher 1.3.4 is M3900 Phase III Concurrent
9110 & 9115	1.3.x or higher 1.3.4 is M3900 Phase III Concurrent
Meridian Home office MHO-II	1.18 is supported with Release 25.40, but Not supported with M3900 Phase III
Call Center Applications	
Meridian MAX [IPEX]	10.x
Meridian MAX [IPE]	8.7, 9.2, 9.3
Network Administration Center [NAC]	2.5 ^a
Meridian Customer Controlled Routing [MCCR] (Discontinued as of July 2000, SCCS offer the functionality of MCRR)	3B, 3C ^a

Meridian Link [Mlink] (Replaced by Meridian Link Services MLS)	5, 5C ^a
Meridian Link & MCCR Co-residency	6.0,6.4
Meridian Link Services [MLS] (Part of SCCS, but sold as a separate product to replace Meridian Link)	4.0,4.2
Symposium Applications & IVR	
Symposium Link	6.x
Symposium Agent Greeting	2.0
Symposium TAPI Service Provider / Symposium Agent	2.x
Symposium Desktop TAPI Service Provider for MCA (Meridian Communicator Adapter)	1.x – 2.x
Symposium Express Call Center [SECC]	2.x.3.x
Symposium Call Center Server [SCCS] Symposium Call Center Server (SCCS) release 1.5 is a retired product. Customers should be upgrading SCCS to the latest supported release if they plan on running X11 release 25.40. The upgrade sequence varies depending on which X11 release you are upgrading from.	3.x, 4.x <u>X11 R23</u> - Customers who are running SCCS release 1.5 with X11 Release 23, should <u>upgrade their Meridian 1 to Release 25.40, prior to upgrading their SCCS</u> . SCCS release 1.5 support for 25.40 is being provided only to facilitate an upgrade path for those customers who are running SCCS 1.5 with X11 Release 23. However, please note: SCCS1.5 should only be run with X11 release 25.40 for a limited period of time during the transition to later releases, since problems reported with this combination will result in the fast tracking of the SCCS upgrade to a fully supported release <u>X11 R24 and R25</u> - Customers who are running SCCS release 1.5 with X11 Release 24 or earlier versions of X11 Release 25 should <u>upgrade their SCCS prior to upgrading to X11 25.40</u> .
Symposium Integrated Interactive Voice Response	2.2 ^a
Symposium Open Interactive Voice Response	4.0 ^a
Periphonics IVR (VPS)	5.x ^a
Periphonics IVR (MPS)	1.x ^a
Periphonics IPML (Peri-IPML)	2.0 ^a

^a No X11 dependency.

Appendix B: Electronic Software Distribution

Electronic Software Delivery for Meridian 1 Systems via Nortel Network's Customer Support website

The software download process is required to take compressed software from the Internet and download it to your PC for duplication. Electronic Software Distribution via Nortel Network's Customer Support website provides a common portal to available Nortel Software.

The following is an example of the Meridian 1 software available for download from the website.

- **Option 11C/11C Mini:** provides software and related General Release Bulletins.
- **Option 51C, 61C, and 81C:** system software, install disks, related MDCSs, and related documentation for all CPU types.
- **Network Management (MAT/OTM):** including system software, updates, PEPs, and related documentation.
- **Meridian Internet Telephony Gateway ITG; IP Telephony; IP telecommuter:** software and documentation for products such as ITG Trunk and Line side applications.
- **Meridian Integrated Products, including MIRAN, MICA, MICB, MIVS and MIPCD.**

Who has access to the web site?

Software distribution is designed for Nortel Networks Distributors and associated technical support personnel. In exceptional circumstances, end customers will be granted access to this site.

To register for an account:

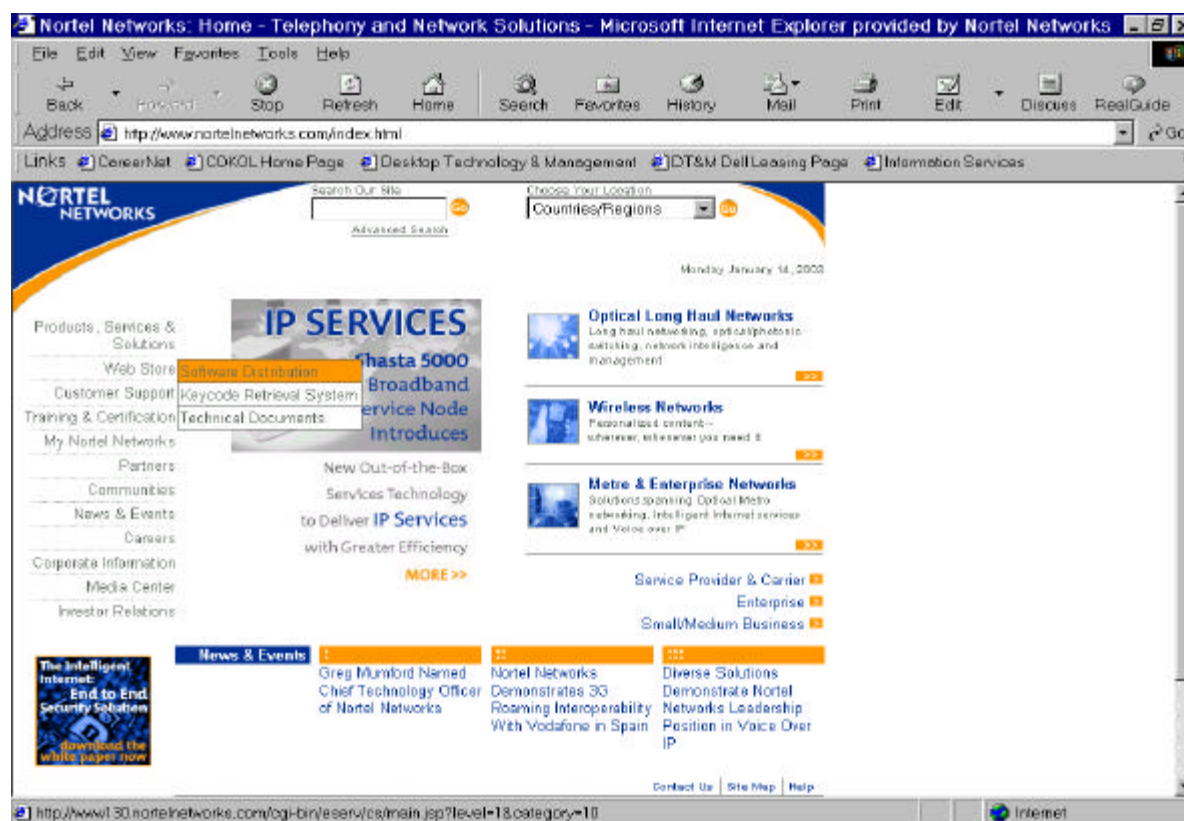
Nortel Networks has adopted the Common Registration System (CRS). This provides one user I.D. and password to access the service websites such as the Software Distribution and Keycode Retrieval websites.

Go to <<http://www.nortelnetworks.com/>>, to "Customer Support" menu, choose "Register menu. Follow the registration process instructions.

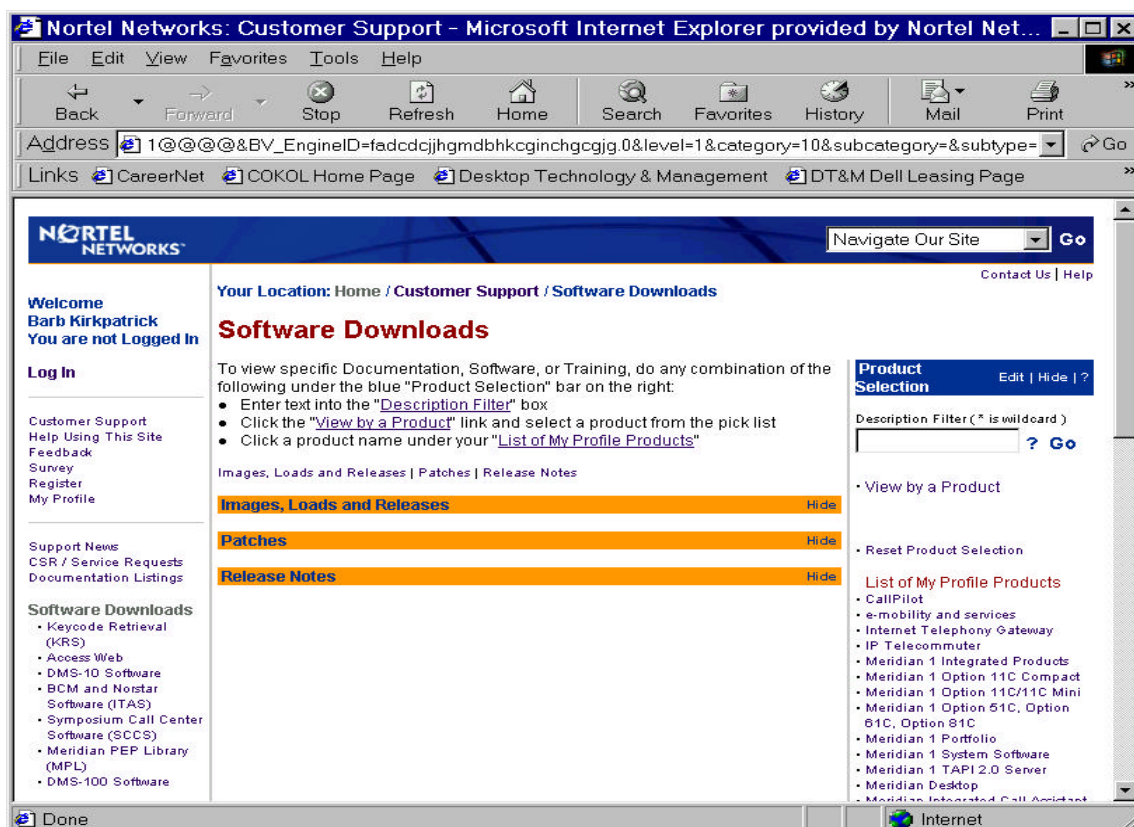
For further details, choose the "Getting Started with Customer Support" under "Support News" banner.

Software Download Steps:

The software download site can be accessed through the following Customer Support website at: <http://www.nortelnetworks.com>
Choose “Customer Support” – “Software Distribution” menu or “Software Downloads from Customer Support page.”



To access the software as an authorized user, you must go to the “Log in” menu and apply your user I.D. and password. Before Log In, you will be able to view software as a Guest only.



Choose the product required in the Product listing (ie. Option 11C or Option11C Mini).

To find the product listing, go to the « **Products** » banner and choose “View by a Product”.

Highlight product(s) required and Save. Click on product under “List of My Profile Products” and you will be able to see all applicable software files.

Find the software file required (search by release may be available for some products). Click on your software selection. Then click on the executable file and/or applicable documentation file and save to your desktop.

(If you do not see any software files available, you may need to go to “My Profile” menu and make sure the Software box is checked.

Pick Your Services

[Hide](#)

[Edit](#) ☐

Documentation
Listings

[Edit](#) ☒

Software
Downloads

[Edit](#) ☐

Training Listings

Nortel Networks: Customer Support - Microsoft Internet Explorer provided by Nortel Net...

File Edit View Favorites Tools Help

Back Forward Stop Refresh Home Search Favorites History Mail Print

Address [BV_SessionID=@@@@0369887071.1011025991@@@&BV_EngineID=fadcdjihgmdbhkcgjg.0](#) Go

Links [CareerNet](#) [COKOL Home Page](#) [Desktop Technology & Management](#) [DT&M Dell Leasing Page](#)

NORTEL NETWORKS Navigate Our Site

Contact Us | Help

Your Location: Home / Customer Support / Product Select

Product Select

Active product: Meridian 1 Option 11C/11C Mini

View by a Product

Select a product from this list to view Customer Support content for that product. Note that the product selected will not be permanently stored in your profile. Click "Save" to return to the Customer Support site.

Product Selection Edit | Hide | ?

Description Filter (* is wildcard)

- View by a Product
- Reset Product Selection
- List of My Profile Products
 - CallPilot
 - e-mobility and services
 - Internet Telephony Gateway
 - IP Telecommuter
 - Meridian 1 Integrated Products
 - Meridian 1 Option 11C Compact
 - Meridian 1 Option 11C/11C Mini**
 - Meridian 1 Option 51C, Option 61C, Option 81C
 - Meridian 1 Portfolio
 - Meridian 1 System Software
 - Meridian 1 TAPI 2.0 Server

Log Out

Welcome Barb Kirkpatrick
You are Logged In

Customer Support
Help Using This Site
Feedback
Survey
Register
My Profile

Support News
CSR / Service Requests
Documentation Listings
Software Downloads
Training Listings
Certification

Knowledge Search

FAQ Search
Solution Search

Internet

Nortel Networks: Customer Support - Microsoft Internet Explorer provided by Nortel Net...

File Edit View Favorites Tools Help

Back Forward Stop Refresh Home Search Favorites History Mail Print

Address <https://www130.nortelnetworks.com/cgi-bin/eserv/cs/main.jsp> Go

Links [CareerNet](#) [COKOL Home Page](#) [Desktop Technology & Management](#) [DT&M Dell Leasing Page](#)

NORTEL NETWORKS Navigate Our Site

Contact Us | Help

Your Location: Home / Customer Support / Software Downloads

Software Downloads

Active product: Meridian 1 Option 11C/11C Mini

Images, Loads and Releases | Patches | Release Notes

Images, Loads and Releases Hide

Description	Software Type	Release Date
• U.S.A. Release 25.30 (PSWV 70)	Rls 25.30	Aug 30, 2001
• M3900 Global Languages - 25.30 (PSWV 70)	Option 11C - PSWV 70	Aug 30, 2001
• Canada Release 25.30 (PSWV 70)	Rls 25.30	Aug 30, 2001
• CALA Release 25.30 (PSWV 70)	Rls 25.30	Aug 30, 2001
• Asia Pacific Release 25.30 (PSWV 70)	Rls 25.30	Aug 30, 2001

Top

Patches Hide

Software content for Meridian 1 Option 11C/11C Mini [25.30] is not available in this category. If you require further assistance please reference the regional contact information on the side menu area to the left.

Top

Product Selection Edit | Hide | ?

Description Filter (* is wildcard)

- View by a Product
- Reset Product Selection
- List of My Profile Products
 - CallPilot
 - e-mobility and services
 - Internet Telephony Gateway
 - IP Telecommuter
 - Meridian 1 Integrated Products
 - Meridian 1 Option 11C Compact
 - Meridian 1 Option 11C/11C Mini**
 - Meridian 1 Option 51C, Option 61C, Option 81C
 - Meridian 1 Portfolio
 - Meridian 1 System Software
 - Meridian 1 TAPI 2.0 Server

Log Out

Welcome Barb Kirkpatrick
You are Logged In

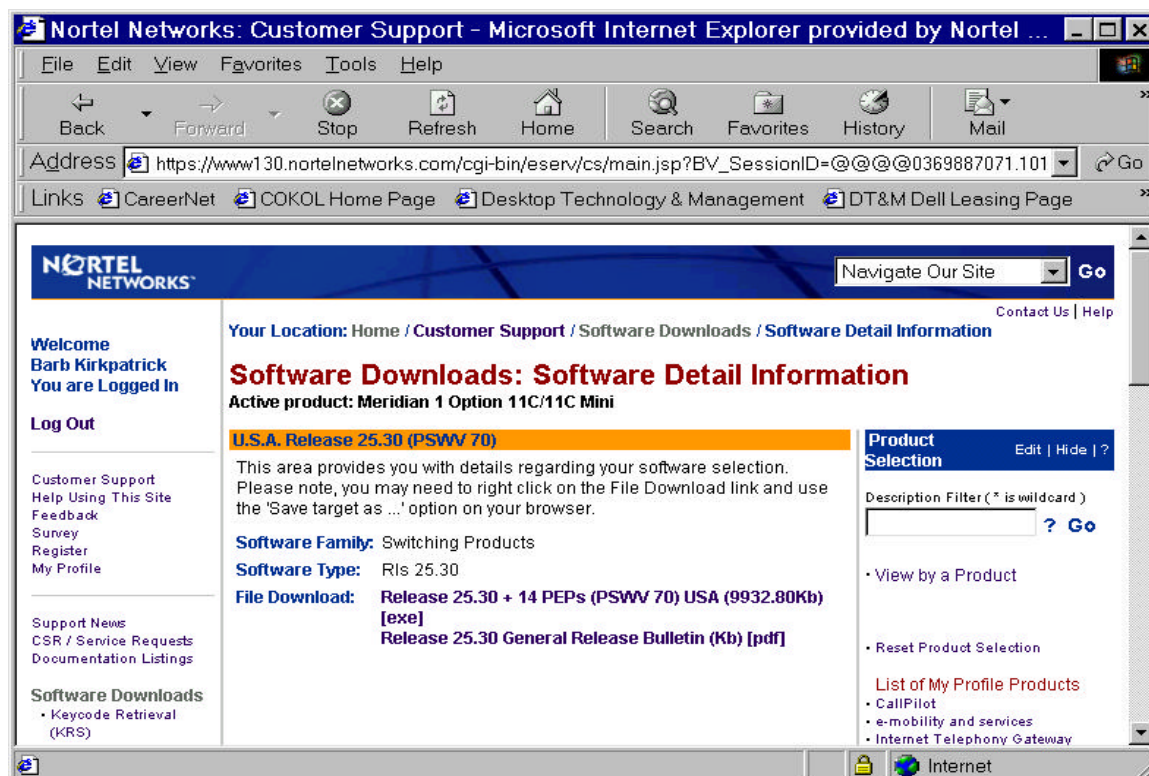
Customer Support
Help Using This Site
Feedback
Survey
Register
My Profile

Support News
CSR / Service Requests
Documentation Listings

Software Downloads

- Keycode Retrieval (KRS)
- Access Web
- DMS-10 Software
- BCM and Nonstar Software (ITAS)
- Symposium Call Center Software (SCCS)
- Meridian PEP Library (MPL)
- DMS-100 Software

Internet



For Option 11C Software you will require the PCMCIA Card Programmer. If you do not already have the PCMCIA Card Programmer installed on your P.C., go to "Site Tools" in the pulldown menu from the Option 11C software page and download the Card Programmer (version 0.5 or higher).

The Programmer will prepare and if necessary erase the PCMCIA card (40 Mb or higher), and load the new software to the card. Open the PCMCIA Card Programmer, select the software from the applicable P.C. drive letter in step 1, then select the PCMCIA drive letter in step 2, click on Program PCMCIA card.

The PCMCIA Card Programmer is compatible with Window 95, 98, and Windows NT 4.0 and above. See Read Me file provided with the Tool for manual instructions.

When properly programmed, the software on the PCMCIA card will have the following directory and file structure:

```
bootrom/
dflt_db/
p/
u/
dramos
dramos.sym
dramoscc.sym
A readme.txt file may also be present.
```

You are now ready to put the programmed card into slot A of the System Controller and proceed with the installation procedure.

For large systems software specific instructions, go to “Site Tools” of the pulldown menu on the Option 51C, 61C, 81,81C software page.

Appendix C: PEPs available for 25.40 GA

Note: Not all PEPs are applicable to Asia Pacific. Please contact your regional Technical Support primes for more information.

Patch	PR	Feature	Title	Public
MPLR13881	MP12396	ACD	ACD NCFW stops working system wide	YES
MPLR15779	MP14998	ACD	CDN name not displayed when answered at default ACD DN	YES
MPLR12550	MP15642	ACD	CLID (for DDGD set) is shown on ICCM agent and TAPI	YES
MPLR15691	MP14327	ACD	Streams of AUD069 and cross talk	YES
MPLR15726	MP13853	ACD	BUG4231 on symposium acquire set	YES
MPLR15860	MP15630	ACD	Meridian Max shows High values of Calls waiting	YES
MPLR15879	MP15740	ACD	NO CDN name display after CO call forward	YES
MPLR15887	MP15859	ACD	TCOS digits display on TAPI	YES
MPLR15892	MP15882	ACD	BUG680 and VNS Bugs when VNS is not being used	YES
MPLR15928	MP13830	ACD	Interactions between IDN AND NRDY operation	YES
MPLR15929	MP16220	ACD	USM ringing sent twice, related to FNA	YES
MPLR16103	MP16876	ACD	SYMPOSIUM problem with 500 set AGENTS (extra call pegged)	YES
MPLR16124	MP16974	ACD	BUG6246 and mail agents go into busy state	YES
MPLR16149	MP17065	ACD	BERR705 FROM RCVY_MAINT_AUDIT	YES
MPLR16164	MP12815	ACD	S-LINK PROGRESS MESSAGE	YES
MPLR15825	MP15359	ADMIN	SCH0011 given after service change of BCS set with PVR	YES
MPLR16061	MP16508	ADMIN	SSL not printed in LD21 for DID incoming only DTI2 route	YES
MPLR16174	MP16610	AGENT-GRTG	Console extended call to agent greeting is unable to RLS	YES
MPLR15636	MP13874	ATTN	DMI digits inserted twice when attendant transfer	YES
MPLR13010	TM17734	CALLPILOT	Intermittent ring no answer on 5.11G	YES
MPLR15156	MP10913	CALLPILOT	Revert to 1800 number fails from Call Pilot.	YES
MPLR15752	MP14877	CALLPILOT	BUG740	YES
MPLR15829	MP10284	CALLPILOT	CDN passed to CALLPILOT when call is sent to phantom DN	YES
MPLR16214	MP17255	CALLPILOT	DISA call can not go to CALLPILOT	YES
MPLR16213	MP10284 BV82596	CALLPILOT	MP10284 - CDN passed to Callpilot when call is sent to phantom DN (Merged PEP)	YES
MPLR15831	MP15436	CALLPROC	One more INI 1D from procedure ENDHUNT	YES
MPLR16084	MP14138	CDR	No CDR N record when a call forwards to Callpilot	YES
MPLR15737	MP14867	CPP	CPP overloads MSDL with IAS CCR-AML Messages	YES
MPLR10194	BV68508	DTI2	Midnight routines incorrectly cause DTI2 to go OOS	YES
MPLR10902	BV80408	DTR	TDS514, TDS830 during midnight routine	YES
MPLR16314	MP17376	FEATURES	BUG4006 RGNA Set not cleared	YES

Patch	PR	Feature	Title	Public
MPLR16077	MP16630	FEATURES	INI000 001D from NIL VMWI_CRPTR, procedure CLASS_VMWI	YES
MPLR16313	MP17398	FEATURES	BFS key lights do not work	YES
MPLR15788	MP15257	FEATURES	Hot Dial Call To ACD Queue Forwarded to CDN not working	YES
MPLR15937	MP16269	FEATURES	Mis-operation of cfna for internal calls	YES
MPLR16106	MP16883	FEATURES	Taurus AND I2004 CFW Displays Not Updated By BFS Key.	YES
MPLR15446	MP07233 MP11141 MP12206 MP10822	FNF	FIJI : When switching clocks ,ring state changes.	YES
MPLR16171	MP16999	IP_PHONE	TCP link starts before RUDP does	YES
MPLR16227	MP17486	IP_PHONE	RLMTPSEXCH Message needed to be changed on 68XX CPUs	YES
MPLR16112	MP15784	ISDN	QSIG with overlap signalling Speed dial	YES
MPLR16220	MP15975	ISDN	Not possible to transfer again after 1st transfer attempt	YES
MPLR16274	MP17826	ISDN	Name in a Facility message on NI-2 is not tandemed.	YES
MPLR07335*	BV42863	ISDN	ISL Tandem to Numeris causes BUG1365	YES
MPLR11106	BV81327	ISDN	Octel DMID integration fails intermittently	YES
MPLR11286*	BV81802	ISDN	BRIT is not reseted when L1 goes down on numeris	YES
MPLR11406*	BV82211	ISDN	Cannot CFW if incoming and outgoing trunks are R2MFC.	YES
MPLR12097*	MP02502	ISDN	EURO ISDN channel remains busy	YES
MPLR12176*	BV83619	ISDN	DPNSS channels left in half disc by VNS in UK	YES
MPLR12511*	MP05829	ISDN	Noise on DPRI2 channel timeslot 7	YES
MPLR12848*	MP08964	ISDN	BERR705 form QNDS_HANDLER	YES
MPLR13015*	MP09252	ISDN	Call blocked from EDSS1 to MCDN if data call is from GSM	YES
MPLR13119*	MP09782	ISDN	BNE call diversion/partial rerouting does not work.	YES
MPLR13138*	MP10514	ISDN	No ACNT code in case of transfer via external IVR system	YES
MPLR13426	MP11385	ISDN	INI 1D in UPDATE_LINK procedure	YES
MPLR13565*	MP11520	ISDN	DATA calls fail due to OVERLAP signalling BCAP interact	YES
MPLR14519*	BV66416	ISDN	BRI S0 ports going into MBSY state	YES
MPLR14738	MP09742	ISDN	NI2 call by call routing DSC with FLEN = length of NCDP	YES
MPLR15300	MP12468	ISDN	RCFW over tandem is not working when NAS is programmed	YES

Patch	PR	Feature	Title	Public
MPLR15662	MP14087	ISDN	Wrong greeting by Octel in case of CFW and incoming GSM call	YES
MPLR15690*	MP14190	ISDN	SL1 uses CREF of active call for new SETUP REQ	YES
MPLR15706*	MP12801	ISDN	Extra tone is added when EES is used with ADL key	YES
MPLR15716	MP11605	ISDN	INI 000C from PRA_IDLE_CHANNEL / IDLECR / REMOVE	YES
MPLR15769*	MP14934	ISDN	INI and BERR705 when ALERT was sent on QSIG ESGF	YES
MPLR15808	MP15250	ISDN	BUG9014 on ISDN calls if originator is trunk	YES
MPLR15827	MP15348	ISDN	NIBUG030	YES
MPLR15863*	MP15708	ISDN	CAUSE 20 "Subscriber absent" is not accepted by M1	YES
MPLR15880*	MP15972	ISDN	BERR0705 when DLi2 information were received via EURO	YES
MPLR15882*	MP15808	ISDN	ERR5523 at each tandem call from Siemens HiCom	YES
MPLR15906*	MP16002	ISDN	DIV # is missing when routing to DPNSS via PLDN	YES
MPLR15912*	MP15151	ISDN	Number is incorrect in TAND case when RCAP=ND3, SIGO=ESN5	YES
MPLR15913	MP16060	ISDN	Network Remote Call Forward not working	YES
MPLR16058*	MP16507	ISDN	UNWANTED INTERCEPT OF ACTIVE CALL TO ATTENDANT	YES
MPLR16062	MP16513	ISDN	Locked sets when ATT transfer parked call over network	YES
MPLR16064	MP16535	ISDN	BERR705 with QSIG GF involving a CFNA an LDN and 500 set	YES
MPLR16074*	MP16791	ISDN	NCOS Barring With CFF Does Not Work With DPNSS Diversion	YES
MPLR16111*	MP16915	ISDN	BERR0705 / INI related to EURO ISDN -> MCDN gateway	YES
MPLR16131*	MP17011	ISDN	QSIG: AFTER PATH REPLACEMENT, SET CAN'T PRESS TRN	YES
MPLR16156	MP17058 MP15000	ISDN	MP15000 - YLAHALLICDR No Dialed digits in X record with PPM	YES
MPLR16179*	MP17224	ISDN	DIGITS MISSING ON SET DISPLAY AFTER QSIG TRANSFER	YES
MPLR16261	MP17770	ISDN	BERR/INI Related to GF_Utility	YES
MPLR15925	MP16253	ITGT2.0	Perceptible loss in connecting ITG2.0 with analog set.	YES
MPLR16051	MP16273	ITGT2.0	CLID field too large stops calls across ITG.	YES
MPLR15930	MP16217	MAT	BERR705 in task SNMP if Event Prefs changed in MAT	YES
MPLR13028	MP09314	MCA	MCA CARD USED IN CALL CONTROL MODE DROPS SOME DIGITS	YES

Patch	PR	Feature	Title	Public
MPLR12417*	MP02226	MDECT	WRONG CALLING PARTY NAME ON THE DISPLAY OF MDECT SET	YES
MPLR14164*	MP11932	MDECT	Blind call transfer on MDECT does not work in DCS mode	YES
MPLR15719*	MP14611	MDECT	BUG085 disconnect message from a dect set	YES
MPLR15720*	MP14613	MDECT	Calls lost when MDECT set uses MPO DISD with Callpilot	YES
MPLR15778*	MP14983	MDECT	BUG6244 on DECT calls	YES
MPLR15908*	MP15966	MDECT	MSMN PKG 370 causes dropped calls on non DCS DECT config	YES
MPLR15952*	MP12104	MDECT	Manual CFW cancelled with MSMN	YES
MPLR16078*	MP12445	MDECT	DCS sets CFW is locked on 16	YES
MPLR16079*	MP16616	MDECT	Time of day displayed on MDECT handsets	YES
MPLR16080*	MP16617	MDECT	Far End Disconnect on MDECT handsets Optional	YES
MPLR16168*	MP17140	MDECT	DMC cards associated with DCS DECT sets are locking up.	YES
MPLR16183*	MP17225	MDECT	DCS sets can not put in group hunt list	YES
MPLR16285*	MP16609 MP16615	MDECT	MERGE of MPLR16070 - BERR705 from procedure DO_XALC_SETS and MPLR16071 - Twinned DCS continues to ring after ATTN RLS call	YES
MPLR15492*	MP12981	MDECT	Wrong CDEN when copy single density to superloop	YES
MPLR15900	MP15976	MIPCD	MIPCD does not recognize “-” in the CLID	YES
MPLR10082	BV68709	MIRAN	MIRAN: set based OA&M PWD not correctly passed to MIRAN	YES
MPLR15936	MP09269	MIRAN	AUD662 and AUD031 during midnight routine	YES
MPLR11148	BV81343	NACD	BUG681 on NCFW ACD call, multi INI-C then System reload	YES
MPLR10373	BV77778	RPA	Feature FFC RPA code doesn't	YES
MPLR16248	MP17409	SIPE	BERR705 from task tSL1 while ENLL SILC	YES
MPLR16270	MP17816	SIPE	CHG IPR COMMAND FROM YES TO NO WILL CORRUPT CONFIG FILE	YES
MPLR16277	MP16861	TAURUS	MRK KEY DOES'NT WORK ON M3905 IF MTRO=PPM	YES
MPLR15951	MP16345	TAURUS	Continuous ringing on Taurus sets.	YES
MPLR16166	MP17110	TAURUS	ON HOOK DEFAULT PATH does not work with HFD	YES
MPLR16216	MP17264	TAURUS	Can only conf/Tran once on ACD M3905 FW 7.9	YES
MPLR16245	MP17503	TAURUS	ACD force answer warning tone is missing	YES
MPLR16272	MP17347	TAURUS	Doesn't display "Day/Nite/Transition mode selected"	YES
MPLR16273	MP17507	TAURUS	M3900 Non System Call Park Display	YES
MPLR11061	MP15566	THORPLAT	Multiple INI-C caused by procedure REMOVE	YES
MPLR12088	BV82987	THORPLAT	Cross talk, call cut off and aud031 aud032	YES

Patch	PR	Feature	Title	Public
MPLR12136	BV83138	THORPLAT	Inactive CP fails takeover when active CP powered down	YES
MPLR15696	MP13850	THORPLAT	MAX, HSL goes down at 12:00AM on the 16th each month	YES
MPLR15857	MP15615	THORPLAT	BERR705 from local pd. SETUP_LOCAL_ORIG, PROC_CSL_I_MSG	YES
MPLR16055	MP12138	THORPLAT	LRA & MC not checked in MAT when retrieved via TTY	YES
MPLR16303	MP17334	TRUNKS	TDD 711 number will not complete over NI2	YES
MPLR06859	BV44211	TRUNKS	NT8D14 IN UNSUP LOP START MODE RELEASES CALL TOO SLOWLY	YES
MPLR11592	BV82689	TRUNKS	IVR transferred call will not complete	YES
<i>MPLR15467*</i>	MP12854	TRUNKS	CLRF (R) recognized as dialing pulse on CIS DTI2.	YES
MPLR15876	MP15720	TRUNKS	WARMSTART tSL1 RESTART from DDD_MODULE	YES
MPLR15895	MP15926	TRUNKS	CONN (S) signal is not sent CDTI2 call to DISA	YES
MPLR10714	BV79511	VNS	NACD target queue closed with ERR5001 print out	YES
MPLR15751	MP14530	VNS	VNS causing system to INI or SYSLOAD	YES

Last Page

This page is included to ensure that people with a hard copy of Generic X11 Release 25.40 General Release Bulletin have the complete document. The table of contents must show that this is the actual last page of the document.

Meridian 1

Generic X11 Release 25

Asia Pacific General Release Bulletin – Release 25.40B

© 2002 Nortel Networks

All rights reserved.

Information subject to change without notice.

Documentation Release: Standard

Date: August 2002