

Option 11C/ 11C Mini Installer's Checklist

P0994370 – v4

NOTE: This document is pertinent for Option 11C and Option 11C Mini systems on Release 25.40B.

The **Generic X11 Release 25.40B** software for Option 11C and Option 11C Mini systems includes five (5) manufacture installed Product Enhancement Packages (PEPs) applicable to all regions.

PEP #	PRS/CR ID	Description of problem that Patch corrects
*MPLR16094	Q00351331 /MP15693	(BUG7058 SWD) Swd watchdog timer expired on task tSL1 (now 5 part patch – issue 03)
MPLR16095	Q00351081 /MP16797	(BUG7058 SWD) Swd watchdog timer expired on task 0x20020000.
MPLR16280	Q00351883 /MP16163	When a call from an analog Modem is established or received, after certain time the call is cut off.
MPLR16603	Q00485127	When doing a New or Change in LD 11 with any type of 3900 set get a INI000 00000024.
MPLR16669	Q00478424	DN's are showing as unused but then they cannot be assigned in LD10.

The Option 11C software daughterboard release for Release 25.40B are as follows:

North America (U.S.A. / Canada)	CALA	Asia Pacific	Japan
NTSK11AR R19	NTSK02AR R19	NTSK03AR R18	NTSK15AR R21

The new Option 11C Mini system controller releases are as follows:

North America	CALA	Asia Pacific	Japan
NTSK11ZR R19	NTSK02ZR R19	NTSK03ZR R18	NTSK15ZR R21

The software version can be identified by the Product Issue of the pre-programmed daughterboard, (or system controller on Option 11C Mini) or PCMCIA card. Product Issue may be determined by locating the label with the product code (i.e. NTSKxxAR, NTSKxxZR, or NTSKxxBR) on either the software box, the software daughterboard, or the PCMCIA card. The Product Issue is the two digit number immediately following the product code. Note that the "xx" in the NTSKxxAR, NTSKxxZR, and NTSKxxBR indicates the region to which the software is released.

Option 11C/ 11C Mini Installer's Checklist

P0994370

NOTE: This document is pertinent for Option 11C and Option 11C Mini on R25.40B.

CAUTION

Ensure that the NTDK20 SSC card is on a **FLAT** surface before installing the Software Daughterboard and Security Device. Ensure that the NTDK97 MSC is on a **FLAT** surface before installing the Security Device.

DAMAGE MAY RESULT if this is done with the card still in the box!

CAUTION Please read this important message on software upgrades

Note: Nortel Networks recommends that you upgrade the boot code to the latest release when you upgrade the software. The boot code is on the programmed PCMCIA card.

Please refer to Nortel Networks NTP's for installation instructions.

You cannot use the UPGRADE command to upgrade correctly from one Release to another (ie. Release 22 to 23; 22 to 25, etc.. The Sysload Method must be used.

SYSLOAD method: Toggle the power supply to OFF and then to ON. During the reboot, press Ctrl I to access the Installation Program.

UPGRADE method: Log in to the system and select DL 143. Type UPGRADE to access the Installation Program. This is used for upgrades within a Release (ie. Rls 25.10 to 25.40B)

NEW - Software daughterboard – NTTK25AA

The NTTK25AA blank software daughterboard is being introduced due to the component obsolescence of the Intel Flash Memory chip used on NTTK13AA daughterboards. This new daughterboard however; has the same memory capacity as the NTTK13AA containing 48 Meg of flash memory storage split into 32 Meg of program store and 16 Meg of C:Drive. The NTTK25AA card is compatible with X11 Release 25.30 software or higher. This card is not compatible with issues of software earlier than 25.30. The installation of the card is the same as with the NTTK13AA or NTDK81AA. . If you are upgrading from a previous version of software daughtercard, please ensure that you have the latest bootcode from your release 25.30 PCMCIA card. (see Upgrade NTP). The minimum bootrom compatible with the NTTK25AA is NTDK34FA release 07.

As noted below, NTTK13AA will continue to be supported with X11 Release 24.24 to Release 25.40B and higher.

Software Daughterboard Compatibility

The following identifies the existing software daughterboards and the software releases they are compatible with:

Software Daughterboard	Capacity	Introduced on	Compatible with
NTDK21AA	32 Meg	Release 22.08D	Release 22.08D – 23.55
NTDK81AA	40 Meg	Release 23.18	Release 23.18 – 24.24
NTTK13AA	48 Meg	Release 24.24	Release 24.24 – 25.30 and higher
NTTK25AA	48 Meg	Release 25.30	Release 25.30 and higher

NTDK97 – 11C Mini System Controller

This controller is designed specifically for the Option 11C Mini which has forced air cooling. DO NOT install this controller in an Option 11C Cabinet (NTAK11) as it will generate excess heat and system damage will result. In addition this controller, when installed in an Option 11C cabinet DOES NOT meet regulatory standards.

IP Expansion Connectivity

Upgrading your Option 11, 11E or 11C system to support IP Connectivity

A minimum software release of X11 Release 25.30 is required to use the new IP daughterboards.

In order to support the software, the software daughterboard, NTKK13AA or NTKK25AA is required on each IP cabinet.

The IP Expansion product requires a minimum vintage of the NTDK20EA SSC card in the main cabinet for Option 11C. Option 11C IP Expansion cabinets require minimum NTDK20CA or later.

Option 11C Mini requires a minimum vintage of the NTDK20EA SSC card in both the main and IP Expansion chassis.

The Option 11C Cabinet refresh is required for cabinets configured with IP daughterboards. Existing cabinets can be easily field upgraded by ordering the **NTDK18AA** cabinet upgrade kit.

IP daughterboards can co-exist with existing Fibre daughterboards thereby providing customers with an easy upgrade solution

NTDK97 – Faceplate LED status

The Link light will be “on” during sysload, then turn “off” after the ethernet interface is enabled (whether ethernet is configured or not) and remain “off” during normal use.

Before starting make sure you have the following:

11C System

• NTDK20 SSC Card • Software Daughterboard • Security Device • Keycode Datasheet (see next page for keycode instructions)

11C Mini System

• NTDK97 MSC Card • Security Device • Keycode Datasheet (see next page for keycode instructions)

For IP Expansion Systems

• IP Daughterboard(s) with appropriate cables • IP Expansion Security Device(s) • Grounding Clips

Note: Your IP Expansion Security Device I.D. begins with the number 4xxxxxxx. It is programmed to work with your main cabinet security device. You will also see NT_REM printed on the device.

The following guides from the NTP suite will be helpful to complete installation:

- Option 11C Planning and Installation Guide
- Option 11C Mini Planning and Installation Guide
- Option 11C and 11C Mini Upgrade Procedures Guide
- For IP Expansion installation procedures, refer to the Planning and Installation Guide
- For Survivability configurations, please refer to the Option 11C Survivability Operation and Configuration Guide.

- Set the baud rate for Port 0 of the SSC/MSC card, using the dip switch on the SSC/MSC card faceplate.

Port 0 is the only SDI port that can be used for software installations and upgrades.

- After successful install of the system, make sure that Port 0 of SSC/MSC card is configured as a Maintenance Terminal/TTY. This is required for future software upgrades.
- If upgrading from an Option 11E multi-cabinet system that has fibre connection to the expansion cabinets, it is recommended that the keycodes be validated on the main cabinet first before swapping out the expansion cabinets.

INSTALL MENU

If installing Option 11C using a Software Daughterboard for a brand new system or for an upgrade from an Option 11/11E to 11C, select Option 1 (New Install or Option 11/11E Upgrade – From Software Daughterboard). If installing to your 11C Mini system using a Mini System Controller for a brand new system, select Option 1.

If installing using a PCMCIA card, select Option 4 (New system installation – from Software Delivery Card) or Option 2 (System Upgrade) to upgrade an Option 11/11E to Option 11C, or to upgrade software to a new release or issue.

"Basic Configuration" database option includes the following items: Directory, Configuration Record, XPECs blocks, Superloops blocks, Patch, Physical Dump Record, IMS TN Table, IMS Links No, Table, Asynch Blocks, CSL Blocks, VAS Blocks, Background TTY Blocks, Background Port ID Blocks, Aries Data Block, SYS PARAMS Block, LAPW Blocks. For a more extensive default data block, please choose "Pre-Configured Data".

IMPORTANT KEYCODE INFORMATION:

The data you need to enter in the INSTALL MENU is provided on the Keycode Datasheet.

If the keycodes are unsuccessful, check the following:

-software issue, feature set name, any additional packages, TNs, ISM parameters, security ID, auxiliary ID (the old site ID, if this is an upgrade), and ensure the correct keycodes were entered. All items must match the keycode sheet exactly.

For an Option 11C Mini system, check that the number of TNs has been entered correctly from the keycode sheet.

When performing a new system installation, please ensure that the default AUX ID matches the AUX ID from the keycode data sheet.

If they still are not successful, then call your Service Representative.

SYSTEM UPGRADE FROM Option 11/11E to Option 11C, retaining copper interface

If you are installing the NTDK26 Backwards Compatible Daughterboard on the SSC card, jumper J7 must be removed prior to installing the card.

SYSTEM UPGRADE FROM Option 11 or 11E to Option 11C

The following two methods can be used to extract customer data from Option 11/11E software cartridge:

- PC with the Option 11/11E data stored in a CCBF file, or
- NTDK30 Database Upgrade Tool

SOFTWARE UPGRADE on Option 11C or Option 11C Mini systems

The following is required: Software on PCMCIA Card and new keycodes; or blank PCMCIA Card and access to Nortel Network's Software Distribution website to download the applicable software.

SOFTWARE DOWNLOAD Website

The Electronic Software Distribution website is available for Option 11C/11C Mini software downloads to your PCMCIA Card. The site is located at: <http://www.nortelnetworks.com>. Go to **Support** Banner – choose **Downloads** menu. Choose **Meridian 1 Option 11C/11C Mini** from the pulldown product listing found under the 'View by a Product' option at the blue 'Products' banner. You must **log in** first in order to access the software downloads.

Registration is required in order to access this site.

Enterprise Solutions

Generic X11 Release 25

General Release Bulletin - Release 25.40B

Document Number:	P0994371
Document Status:	Standard
Document Release:	1.0
Document Date:	August, 2002

Printed in Canada

“ PROPRIETARY INFORMATION ”

Information is subject to change without notice. Nortel Networks reserves the right to make changes in design or components as progress in engineering and manufacturing may warrant. This equipment has been tested and found to comply with limits for a Class A digital device pursuant to Part of the FCC rules.

Document history

July 31, 2002

Issue 0.1 first draft to add Release 25.40B Addendum

August 1, 2002

Issue 1.0 Standard

Table of Contents

TABLE OF CONTENTS.....	IV
1 X11 RELEASE 25.40B ADDENDUM.....	1
1.1 SIMPLE NETWORK MANAGEMENT PROTOCOL (SNMP) SECURITY.....	1
VULNERABILITIES.....	1
1.2 KEYCODES FOR RELEASE 25.40B.....	2
1.3 ORDERINGCODES FOR RELEASE 25.40B	2
1.4 RESOLVED PROBLEMS	2
1.5 KNOWN ISSUES & WORKAROUNDS.....	11
1.6 PRODUCT ENHANCEMENT PACKAGE (PEPs) FOR RELEASE 25.40B	13
1.7 DEPENDENCY LISTS FOR RELEASE 25.40B	13
1.8 RELEASE 25.40B REFERENCE PRODUCT ADVISORY BULLETINS	15
2 INTRODUCTION.....	16
2.1 RELEASE 25.40 QUICK VIEW.....	17
2.1 RELEASE 25.40 QUICK VIEW.....	18
2.2 RELEASE 25 FEATURE CONTENT AND MAT/OTM MATRIX	20
2.3 RELEASE 25 PERIPHERAL SOFTWARE DOWNLOADABLE (PSDL) LISTING	24
3 SYSTEM ADVISEMENTS.....	27
3.1 SYSTEMS SUPPORTED.....	27
3.2 FEATURE INTERACTIONS	30
3.3 REAL TIME IMPACT OF RELEASE 25	31
3.4 SYSTEM SECURITY	32
3.5 AUDIT ROUTINE.....	32
3.6 CALLPILOT DISTRIBUTOR WEB SITE FOR PEPs IDENTIFICATION	32
3.7 SYMPOSIUM DISTRIBUTOR WEB SITE FOR PEPs IDENTIFICATION	32
3.8 CROSS PRODUCT DEPENDENCY LIST INFORMATION.....	32
3.9 SYSTEM MANAGEMENT.....	33
3.10 MIGRATION PATHWAYS	35
4 SMALL SYSTEM ADVISEMENTS.....	36
4.1 SMALL SYSTEM CONTROLLER AND MEMORY REQUIREMENTS.....	36
4.2 SOFTWARE DELIVERY	37
4.3 SOFTWARE CONVERSION.....	38
4.4 UPGRADES TO RELEASE 25 FROM OPTION 11/11E.....	38
4.5 UPGRADES TO RELEASE 25 FOR OPTION 11C	38
4.6 UPGRADES TO RELEASE 25 FOR OPTION 11C MINI.....	38
4.7 BASIC CONFIGURATION DATA.....	38
4.8 USE OF BKO COMMAND IN LD 43.....	39
4.9 BACKWARDS COMPATIBLE DAUGHTERBOARD - NTDK26.....	39
5 LARGE SYSTEM ADVISEMENTS.....	40
5.1 CALL PROCESSOR MEMORY REQUIREMENTS	40
5.2 UPGRADING TO X11 RELEASE 25.40	43
5.3 SOFTWARE DELIVERY	43
5.4 CALL PROCESSOR CP PII – 256MB MEMORY UPGRADE- RLS 25.40.....	43
5.5 LARGE SYSTEM NEW GLOBAL CLOCK CONTROLLER - NTRB53.....	44

6	DOCUMENTATION.....	45
6.1	RELEASE 25.40 DOCUMENTATION OVERVIEW	45
6.2	DOCUMENTATION ORDER CODES.....	47
7	SOFTWARE ISM & PACKAGING CHANGES	57
7.1	SOFTWARE ISM.....	57
7.2	SOFTWARE PACKAGES	59
7.2	SOFTWARE PACKAGES	59
8	FEATURE OVERVIEW	61
8.1	RELEASE 25.40 FEATURES SUMMARY	61
8.2	RELEASE 25.30 FEATURES SUMMARY	70
	APPENDIX A: AUXILIARY PROCESSOR ALIGNMENT RELEASE 25.40	71
	APPENDIX B: ELECTRONIC SOFTWARE DISTRIBUTION	73
	APPENDIX C: RESOLVED PROBLEMS	78
	APPENDIX D: KNOWN ISSUES & WORKAROUNDS	94
	APPENDIX E: PEPS AVAILABLE FOR 25.40 GA.....	112
	LAST PAGE.....	117

1 X11 Release 25.40B Addendum

X11 Release 25.40 software is being up-issued to address identified SNMP security vulnerabilities. Additionally Nortel Networks has taken the opportunity to integrate some critical fixes into the software to improve the quality and robustness of the base X11 code and to improve supportability of the product by a significant reduction in the number of required Product Enhancement Packages (PEPs). Below in this addendum in section 1.2 the Resolved Problems section are more details describing the contents of the Release 25.40B Up-issue.

Of important note is that ALL other information and advisements associated with the introduction of Release 25.40 software are still relevant, applicable and remain intact for Release 25.40B. Throughout the remainder of this General Release Bulletin beginning at Section 2 all reference to Release 25.40 can simply be substituted to read Release 25.40B. The exception to this is where a Problem Report (PR/CR) relevant in February, 2002 at the time Release 25.40 was introduced may be on the list of Resolved Problems integrated into the Release 25.40B software.

1.1 Simple Network Management Protocol (SNMP) Security Vulnerabilities

On February 12, 2002, CERT®, a federally funded Internet security watchdog organization, issued a global security advisory concerning SNMPv1. The advisory states that network equipment - including switches, routers, hubs, printers, and operating systems - may be vulnerable to an SNMP-related attack that could cause equipment to fail or allow unauthorized users to take control of it. Simple Network Management Protocol (SNMP) serves as the basis for software tools that enable network administrators to monitor the status and performance, as well as to configure, network systems, for example, enabling prioritization of traffic and network traffic flow control by managing the various elements of the network.

Responding to this advisory Nortel Networks has set up an internal task force to evaluate the situation and where applicable implement appropriate corrective measures. This effort is being done in collaboration with industry participants, software suppliers, and other groups to ensure appropriate actions and means of implementation are available to our customers.

Specific testing indicated that Meridian X11 software contained such SNMP security vulnerabilities as predicted by CERT®. Since corrective action through a Product Enhancement Package (PEP) was not possible the need arose then to up-issue the recently introduced X11 Release 25.40 software to Release 25.40B.

For further information on the SNMP security vulnerabilities please refer to the following Web sites:

<http://www.nortelnetworks.com/corporate/technology/snpmv1.html>
<http://www.cert.org/advisories/CA-2002-03.html> (Section III. Solution)

1.2 Keycodes for Release 25.40B

The same keycode will work for both Release 25.40 and Release 25.40B. If you are ordering an upgrade to Release 25.40B from Release 25.40 software you will use the new NT8R65BL (A0992159) code where simple use your existing keycode.

Please note that Release 25.40B software is also available to Authorized Meridian 1 Distributors on the Electronic Software Distribution (ESD) website.

1.3 Ordering Codes for Release 25.40B

All other existing Release 25.40 related order codes still apply to Release 25.40B. This is due to the fact that the keycode supplied with 25.40 will work with the 25.40B software, a benefit of the keycode enhancement feature already introduced in Release 25.40.

For full details on ordering codes for Release 25.40 that are equally applicable to Release 25.40B, please refer to the Release 25.40 Product Bulletin 2002-007 and Sales and Marketing Bulletin 1402-A rev 1 issued in March and April of 2002, respectively.

1.4 Resolved Problems

The following problems found on previous GA releases of software have been resolved in Release 25.40B.

Note: PEPs considered European PEPs are highlighted in Italics with an *.

<i>PATCH #</i>	<i>CR I.D.</i>	<i>PRS I.D.</i>	<i>PRODUCT</i>	<i>PROBLEM CORRECTED</i>
MPLR16166	Q00338091	MP17110	TAURUS	The On Hook Default Path does not work when the handsfree class of service is denied.
MPLR16245	Q00351811	MP17503	TAURUS	When an ACD set is configured with the Force Answer feature enabled, the warning tone is missing

				when the handset is on hook and the call is force answered.
MPLR16272	Q00336754	MP17347	TAURUS	When the Night Service Select Mode is enabled the display does not read 'Day/Night/Transition mode selected'.
MPLR16273	Q00338146	MP17507	TAURUS	When the user parks a call the display is not updated correctly.
MPLR16304	Q00351262	MP17833	TAURUS	Firmware download to 3904 sets halts with no error code given and produces bug4042 errors.
MPLR16324	Q00351264	MP17942	TAURUS	A slow download can result in the appearance of an IOD51 message during a firmware download attempt.
MPLR16227	Q00351645	MP17486	IP_PHONE	When there is an ITGL card reboot or an EDD the link comes up and the EDD finishes but the IP addresses are not aligned.

<u>PATCH #</u>	<u>CR I.D.</u>	<u>PRS I.D.</u>	<u>PRODUCT</u>	<u>PROBLEM CORRECTED</u>
MPLR16271	Q00349387	MP17431	CPP	A FIJI reset after a power up causes the clock to disappear resulting in BERR and FHW00 errors.
MPLR16305	Q00349399	MP17923	IP_PHONE	When a CPP machine is upgraded configured zones disappear.
MPLR16356	Q00349409	MP18470	CPP	When a split command is issued from the active side, the inactive CP does not sysload.
MPLR16289	Q00349401	MP17318/ MP17946	CPP CPP	BUG2054 is displayed each time a new message is send to the already full message queue where the customer sees a BUG scrolling on the TTY and doesn't know the impact of it. After an HSP down, the system failed to disk sync. The HSP goes down again after the memory sync. The net result is that the system completed memory sync but failed to start disc sync.
MPLR16380	Q00349404	MP18082	CPP	The PBX gets a SYS000 000800 error message during midnights.
MPLR16208	Q00351086	MP17179	SIPE	The TMDI card in a SIPE expansion cabinet does not come up after a cold start.

<u>PATCH #</u>	<u>CR I.D.</u>	<u>PRS I.D.</u>	<u>PRODUCT</u>	<u>PROBLEM CORRECTED</u>
MPLR16317	Q00351626	MP17073	IP_PHONE	If the 11C Main Cabinet/Chassis fails during a power failure and an Expansion Cabinet/Chassis switches to survival mode the ITG Line card cannot establish a link to the ELAN address of the Expansion Cabinet/Chassis. This results in IP sets that cannot make calls other than to sets on the same card.
MPLR16276	Q00351382	MP17136	Trunks	Specific to Japan AnalogDID trunks a caller from the PSTN hears a busy tone.
MPLR16157	Q00349494	MP16936	SIPE	An IP connected system can be initialized due to network instability.
MPLR16233	Q00338116	MP17239	SIPE	The 100BaseT driver checks the wrong memory location for the MAC_CRC_ERROR status byte.
MPLR16347	Q00349283	MP16218	Features	The Inventory Generate Sets feature does not print out complete ID's for all digital set types.
MPLR16347	Q00351432	MP18948	Features	The CPP II machine cannot completely print out ID numbers for network shelves and IPE shelves.
MPLR16337	Q00351630	MP17275	IP	During extended time traffic testing when attempting a 24 channel conference (4 groups of 6 party) some of the calls in

				one group are dropped.
--	--	--	--	------------------------

<u>PATCH #</u>	<u>CR I.D.</u>	<u>PRS I.D.</u>	<u>PRODUCT</u>	<u>PROBLEM CORRECTED</u>
MPLR16242	Q00351525	MP17461	IP	There is no connection between the ITG card and the Main CPU caused by RUDP not handling NAK's on an optimum fashion.
MPLR16164	Q00349197	MP12815	ACD	HOLD cannot be used on a softphone when using s link with a Genesys tserver.
MPLR15829	Q00349320	MP10284	CallPilot	When CDN calls are being rerouted from Symposium to a CallPilot Phantom DN and an ACD Agent is unavailable the switch sends incorrect information to the CallPilot.
MPLR16084	Q00351965	MP14138	ACD	A trackable billable N record is not generated when a call is transferred by an attendant to a set that is forwarded to CallPilot.
MPLR13015	Q00351652	MP09252*	ISDN	Calls are blocked if they are from GSM phones with a data adapter calling into a 2 Node system going from the EDSS1 over the MCDN
MPLR16179	Q00350099	MP17224*	ISDN	Digits are missing on set display after a QSIG transfer and therefore cannot tell where the call is originating from.
MPLR16183	Q00353378	MP17225*	MDECT	DCS sets cannot be put into the Group Hunt List.

<u>PATCH #</u>	<u>CR I.D.</u>	<u>PRS I.D.</u>	<u>PRODUCT</u>	<u>PROBLEM CORRECTED</u>
MPLR15860	Q00349211	MP15630	ACD	An incorrect high value of calls waiting are being provided in a Networked Meridian Max scenario causing confusion and misleading reporting.
MPLR16171	Q00351622	MP16999	IP_PHONE	In high packet loss testing the TCP link was seen starting before RUDP which can cause a warmstart.
MPLR16374	Q00348833	MP17114	CPP	An error message when logging into PDT causes access to PDT to be unavailable.
MPLR16431	Q00349410/	MP18529/	CPP	Bug messages fill up the report log on the CPP inactive side when in redundant mode causing a loss of visibility to critical error messages.
	Q00349427	MP18891	CPP	The health on a CPP machine fluctuates on the inactive side because the ethernet port is randomly taken out of service and put back into service.
N/A	Q00351433	MP19137	CPP	Unprocessed error messages are lost after a sysload which makes it difficult to determine the cause of the sysload due to a VXWorks loader problem.
MPLR16416	Q00351314	MP18419	THOR PLATFORM	Corrupted data in the INET.DB file causes loss of IP phone functionality and also impacts the functioning of Symposium and CallPilot.

<u>PATCH #</u>	<u>CR I.D.</u>	<u>PRS I.D.</u>	<u>PRODUCT</u>	<u>PROBLEM CORRECTED</u>
MPLR16508	Q00435576	N/A	CALL REGISTER & CALL FORWARD	When a Phase 3 Taurus set deactivates a CFW, a CALLREGISTER is lost. Eventually, the machine has no more CALLREGISTERS and an INI is necessary to recover them.
MPLR16500	Q00351402	MP19038	ADMIN	The LFFD prompt is missing in LD 15 causing CDB corruption which makes use of the DSS9000 in standard mode unavailable.
N/A	Q00349419	MP18694	CPP/THOR	When an ISSP command is attempted in LD22 on CPP machines, it causes the switch to INI.
N/A	Q00349417	MP18692	CPP	An INI occurs on a CPP machine when enabling or disabling superloop LD 30.
N/A	Q00416774	N/A	ELAN	Use of extremely long username and password (18 characters or more) will cause a Bus Error and a task restart of the FTP server task and a subsequent warm start or “hanging” of the FTP server.
N/A	Q00415949	N/A	CPP	There is loss of call processing during a warm start caused by erroneous messages to the Real Time Clock.
N/A	Q00349344	MP19281	CALLPROC	Failure of the CPP compiler to initialize local variables before use causes Bus Errors and data corruption.
MPLR16490	Q00350117	MP19166	ISDN	Failure of the NDS_HANDLER to initialize some variables

				will cause Bus Errors and INI's.
--	--	--	--	-------------------------------------

1.5 Known Issues & workarounds

In addition to those listed in Appendix D in this document the following known unresolved problems, applicable workarounds and available Product Enhancement Packages (PEPs) are applicable to Release 25.40B (and therefore Release 25.40) software:

OPTION 81C CPP, CP2, CP3, CP4

Problem Category	Unable to view RPT logs	Ref: Q00491069 PATCH: NONE
Date reported	07/23/2002	
System impacted	Option 81C CPP, CP2, CP3, CP4	
Software reported	Release 25	
Description of incident	It is possible for a problem to occur in which attempts to read records in the report log will fail, using commands such as rdtail and rd.	
Impact on system operation	Minor.	
Workaround	If this occurs the problem can be avoided by changing directory to the directory containing the log (/u/rpt or c:/u/rpt) and then executing the command "rdopen rpt.log". The rest of the report commands should then resume functioning.	

CORE

Problem Category	Overlay l22 issp doesn't print out full PRS#	Ref: MP19123/ Q00 351042 PATCH: NONE
Date reported	06/26/2002	
System impacted	All machine types	
Software reported	Release 25	
Description of incident	Nortel Networks has changed the numbering scheme for problem reports from 7 digits to 10 digits - the issp command in overlay 22 only prints 7 digits	
Impact on system operation	Minor.	
Workaround	It is recommended that technicians use the final 7 digits of the new CR 10 digit problem report number only when entering the problem report number. For example, a problem report number with Q123456789 should be entered as 3456789. This will provide the most significant digits for patch reference when using the issp command.	

Large system (CP2, CP3, CP4)

Problem Category	The status of any additional memory 16MB/32MB SIMMs are not correctly reported	Ref: Q00418368 PATCH: NONE
Date reported	04/22/2002	
System impacted	Large systems	
Software reported	Release 25.40	
Description of incident	During the installation of the memory the system will detect the additional SIMMs. After software and Processor/Memory upgrade and when stating CPU & memory the system will indicate that added memory is disabled and not responding.	
Impact on system operation	Minor, the system will be running and utilizing the added memory, but it will provide the wrong status of the added memory in LD 135.	
Workaround	<p>Manually change the contents of the simm.db file after the memory upgrade FILE: /u/db/hi/simm.db Once the file is changed, the switch has to be initialized (Coldstart) for the changes to be effective Example: upgrade from 48MB (3x16MB) to 64 MB (4x16MB) After the memory upgrade: Ld 135 Stat mem cp simm/bank stat 0 0/0 ENBL 0 1/0 ENBL 0 2/0 ENBL 0 3/0 DSBL: 'NOT RESPONDING' *** Wrong status is reported *** cp simm/bank stat 1 0/0 ENBL 1 1/0 ENBL 1 2/0 ENBL 1 3/0 DSBL: 'NOT RESPONDING' *** Wrong status is reported ***</p> <p>pdt> cat simm.db /u/db/hi/simm.db 16 0 16 0 16 0 0 0 *** Added SIMM is Not reported ***</p> <p>Change to: pdt> cat simm.db /u/db/hi/simm.db 16 0 16 0 16 0 16 0</p> <p>Initialized (Coldstart) the switch in order to activate the changes pdt> Reboot -1</p>	

1.6 Product Enhancement Package (PEPs) for Release 25.40B

With the introduction of Release 25.40B software all reported problems found on this release as well as the 25.40 release that are “patchable” will have PEPs written for both Release 25.40B and Release 25.40.

Additionally all relevant PEPs currently available for Release 25.40, largely those found in Appendix E plus any others that have been developed since Release 25.40 began shipping in February, 2002, will be re-written for Release 25.40B. Availability for these re-written PEPs in the Meridian PEP Library is targeted for the end of August, 2002. As is standard on MPL different releases of the PEPs will be clearly identified as Issue 25.40 and 25.40B.

1.7 Dependency Lists for Release 25.40B

The Release 25.40B Dependency Lists will be made available within a couple of weeks of the 25.40B start ship date. In the interim the individual PEPs contained in the DepLists will be available on the Meridian PEP Library as of the start ship date of Release 25.40B should you need them prior to completion of the actual Dependency Lists.

The following is a listing of the PEPs targeted for the Release 25.40B Dependency Lists:

Release 25.40B Dependency List Content

25-Jul-02

TOTAL

42

DepList category	PEP ID	Machine-type	
CORE	MPLR16603	ALL	NEW
CORE	MPLR16413	CPP	
CORE	MPLR16280	Opt11C	
CORE	MPLR16094	Opt11C	
CORE	MPLR16095	Opt11C	
CORE	MPLR16266	CPP	
CORE	MPLR16353	All	
CORE	MPLR16354	All	
CORE	MPLR12088	All	
CORE	MPLR15930	All	
CORE	MPLR16058	All	
CORE	MPLR16285	All	
CORE	MPLR12848	All	
Features	MPLR15696	CPP	
IP	MPLR16325	All	
IP	MPLR16305	CPP	
EuroNET	MPLR15719	All	
EuroNET	MPLR12176	All	
EuroNET	MPLR12417	All	
EuroNET	MPLR12097	All	
EuroNET	MPLR15908	All	
EuroNET	MPLR16111	All	
EuroNET	MPLR11286	All	
EuroNET	MPLR15880	All	
EuroNET	MPLR13138	All	
EuroNET	MPLR16168	All	
Int'l Net	MPLR16490	all	
Int'l Net	MPLR16377	all	
CallPilot	MPLR15788	all	
CallPilot	MPLR16214	all	
CallPilot	MPLR15156	all	
CallPilot	MPLR13010	all	
SCCS / SECC	MPLR16430	all	
SCCS / SECC	MPLR11587	all	
SCCS / SECC	MPLR16264	all	
SCCS / SECC	MPLR16463	all	
SCCS / SECC	MPLR16465	all	
SCCS / SECC	MPLR13030	all	
SCCS / SECC	MPLR12858	all	
SCCS / SECC	MPLR15929	all	
SCCS / SECC	MPLR16103	all	
SCCS / SECC	MPLR16216	all	

Note: The Dependency List Paks are currently available for Release 25.40. The equivalent DepList Paks for Release 25.40B are targeted for development three to four months from the Release 25.40B start ship date.

1.8 Release 25.40B Reference Product Advisory Bulletins

The following Product Advisory bulletins issued for Release 25.40 are also applicable to Release 25.40B:

- **Bulletin # 2002-099** - ACD DN/CDN Expansion Feature (ACDE Package 388) Requirements with X11 Release 25.40 Software
- **Bulletin # TBD** - Service Change to M3900 sets can cause Data Corruption/INI on Generic X11 Meridian 1 Release 25.40 (previously released as a GNTS Advisory and Partner NewsFlash)
- **Bulletin # 2002-063** - Meridian 1 Large System X11 Release 22 to X11 Release 25.40 or 25.40B Upgrades with CP2 Processors require Interim CP BOOTROM Upgrade
- **Bulletin # TBD** - Large systems memory upgrades (SIMMs) issue with Release 25.40 and Release 25.40B

2 Introduction

This document provides an overview of the Global features developed for the Meridian 1 Generic X11 Release 25.40 software. It describes the new features and enhancements offered. It also provides an overview and brief descriptions of the features introduced in Release 25.30 since not all regions rolled out Release 25.30. This document contains feature information that is applicable for all supported Meridian 1 system types.

X11 Global Release 25.40 is a multi-purpose release designed to deliver a single global software stream to all markets. Release 25.40 will be supported on new systems as follows: (NOTE: not all processor types are available in all markets).

Option 51C is no longer be sold as a new system. With the introduction of Release 25.40 (EMEA FBP 3.0), Option 51C will no longer be sold as a new system.

Upgrades to 25.40 will be offered to existing Opt. 51C systems provided that no hardware upgrades are required.

The default processor for new systems Option 61C in all regions will be the 68060E processor and for Option 81C will be Call Processor PII (256MB) commercial processor.

Release 25.40 Option 81C new systems will ship with Fiber Network Fabric (FNF) and Call Processor PII (CP PII) with 256MB memory as the default configuration.

For Options 51C, 61C, 81 and 81C details on feature installation and operation, and hardware upgrade procedures, refer to the Nortel Networks Publications (NTPs). Also, please refer to the Software Conversion Procedures (553-2001-320) that are included in your NTP shipment prior to loading this software.

For information on Real Time requirements, please contact your local Nortel Networks sales representative. For information on Memory calculations, please refer to the Technical Reference Guide for Small Systems or the Meridian 1 Release 25 Planning and Engineering Guide for Large Systems.

Not all features described in this document are offered in all countries, and as noted within the Bulletin, not all features are supported on all machine types.

Please contact your local Nortel Networks sales representative for more information.

Generic X11 Release 25.40 is supported on:

- Option 11C and Option 11C Mini.

[Refer to Option 11C/Mini Installer's Checklist posted on Nortel Networks Customer Support Websites for details of any manufactured PEPs with the GA Release of 25.40.]

- Options 51C, 61C, 81 and 81C equipped with the Motorola 68040 (NT9D19) CP2, 68060 (NT5D10) CP3, or 68060E (NT5D03) CP4 commercial processors.
- Options 81C equipped with Call Processor PII commercial processors.

[Refer to Manufacture Delivered Customer Solutions (MDCS) General Release Bulletin shipped with each Software for details of any mandatory PEPs required for Large Systems] MDCS is available in NA, AP and CALA only.

IMPORTANT

Please read all included advisements, requirements, and enhancements both common, and pertinent to your machine type prior to loading this software. Please read Appendix D "Known Issues & Workarounds" prior to loading and installing this software.

AP: Asia Pacific

CALA: Caribbean and Latin America

EMEA: Europe, Middle East and Africa

NA: North America

When references in this document are made to "Release 25", the statements are applicable to Release 25.10, Release 25.15, Release 25.30 and Release 25.40.

2.1 Release 25.40 Quick View

2.1.1 System Management

Release 25.40 is not supported by MAT, only supported by OTM 1.2 or higher.

2.1.2 Software Delivery

Release 25.40 uses the same software delivery vehicles as all other issues of Release 25.

Refer to Appendix B [Electronic Software Distribution (ESD)] for the new electronic software download website.

2.1.3 Software Migration Pathway

Release 25.40 supports same migration paths as Rls 25.30, 25.15 and Rls 25.10.

2.1.4 Memory Requirements

Release 25.40 Small systems memory requirements are the same as all other issues of Release 25.

A new blank software daughterboard NTKK25AA was introduced in Sept. 01 and both NTKK25AA and NTKK13AA are supported on Release 25.40.

The new blank software daughterboard NTKK25AA will not be introduced into EMEA until mid 2002.

Release 25.40 Option 51C-81C memory requirements are the same as Release 25.15 & 25.30; Release 25.40 introduced Memory upgrade for Option 81C CP PII to 256MB, that is mandatory for all 81C CP PII machines with Six or more groups. New 81C systems will ship with CP PII with 256MB memory.

2.1.5 Supported Machine types

Release 25.40 is supported by the same machine type as Release 25.15 & 25.30. Option 51C is no longer sold as a new system.

2.1.6 PE/EPE Support

Release 25.40 supports the same PE/EPE equipment as all other issues of Rls 25

2.1.7 New ISM and software Packages

Release 25.40 introduced Six new Software Packages and One new ISM.
Refer to “Software ISM & Packages changes” section of this Bulletin for details.

2.1.8 Documentation changes for Release 25.40

Meridian documentation suite has been updated to include Release 25.40 new features.

Additional restructure and quality enhancements of the suite will include the introduction of new binders, merging and discontinuing of some documents. Several documents will be translated into French and German.

A cross-reference chart of discontinued books as well as merged content will be generated to help users understand the changes.

Refer to the Documentation section of this bulletin for details.

2.2 Release 25 Feature Content and MAT/OTM Matrix

Feature/Product	11C Mini	11C	51C	61C	81	81C	25.10	25.15	25.30	25.40	MAT/OTM Mandatory Requirement
System Features & Processor, Memory and Clock Enhancements											
Fiber Network Fabric (FNF)					X	X		X	X	X	No
Call Processor PII (CP PII)						X		X	X	X	No
Inventory Reporting Phase 2	X	X	X	X	X	X	X	X	X	X	No
Option 11C/11C Mini IP Expansion	X	X							X	X	No ^{2,3}
Scheduled Electronic Lock	X	X	X	X	X	X			X	X	No
Attendant Announcement	X	X	X	X	X	X				X	No
ACD DN Expansion ⁶						X				X	No
MISP & DPNSS Support for IP Expansion ⁹	X	X								X	No
Autonegotiation on IP Expansion	X	X								X	No
CP PII Memory Enh. Option 81C (256MB)						X				X	No
Large System New Clock Controller (NTRB53AA)			X	X	X	X	X	X	X	X ⁵	No

Feature/Product	11C Mini	11C	51C	61C	81	81C	25.10	25.15	25.30	25.40	MAT/OTM Mandatory Requirement
Networking and Internet Telephony Gateway											
Internet Telephony Gateway ITG Trunks2.0	X	X	X	X	X	X	X	X	X	X	6.67.04 /1.0 or higher
D-Channel Expansion					X	X	X	X	X	X	No
Private to Public CLID Conversion	X	X	X	X	X	X	X	X	X	X	No
ISDN & QSIG Enhancements and Regulatory requirements											
QSIG Message Waiting Indication	X	X	X	X	X	X				X	No
QSIG Enhancements	X	X	X	X	X	X				X	No
NI-2 Name Display Supplementary Service (Not applicable to AP & EMEA)	X	X	X	X	X	X				X	No
NI-2 B-Channel Service Messaging (Not applicable to AP & EMEA)	X	X	X	X	X	X				X	No
Agent Greeting	X	X	X	X	X	X		X	X	X	No
10/20 Digit ANI on 911	X	X	X	X	X	X	X	X	X	X	No
Feature/Product	11C Mini	11C	51C	61C	81	81C	25.10	25.15	25.30	25.40	MAT/OTM Mandatory Requirement

Desktop and IP Telephone											
M3900 Enhancements (Release 25.10)	X	X	X	X	X	X	X ¹	X	X	X	No
M3900 – Corporate Directory	X	X	X	X	X	X		X	X	X	6.67.07 /1.0 or higher
M3900 – Virtual Office	X	X	X	X	X	X		X	X	X	No
ITG Line-side 2.0 & i2004 Internet Telephone	X	X	X	X	X	X			X ⁴	X	6.67.07 /1.0 ²
ITG Line-Side 2.2& i2050 Soft phone ⁸	X	X	X	X	X	X				X ⁸	OTM 1.2
M3900 Productivity Enhancement ⁷	X	X	X	X	X	X				X	No
M3900 Virtual Office Enhancement ⁷	X	X	X	X	X	X				X	No
M3904 Full Duplex Handsfree (FDHF) ⁷	X	X	X	X	X	X				X	No
M3900 Phase III Enh. ⁷ (Release 25.40)	X	X	X	X	X	X				X	No
Infrastructure, Tools and Keycode Enhancements											
Dynamic PSDL Partitioning [DPSDL]	X	X	X	X	X	X				X	No
PDT Password Enhancement	X	X	X	X	X	X				X	No
PDT Access Log Enh.	X	X	X	X	X	X				X	No
Keycode Enhancement	X	X	X	X	X	X				X	No
Feature/Product	11 C Mini	11C	51C	61C	81	81C	25.10	25.15	25.30	25.40	MAT/OTM Mandatory Requirement
Features Enhancements (Not Applicable all regions)											

Business Network Express [BNE] “EMEA only”	X	X	X	X	X	X		X	X	X	No
MDECT 2000 MSMN “EMEA & AP”	X	X	X	X	X	X	X	X	X	X	No
CLID on Analog Trunks (Hong Kong only)	X	X	X	X	X	X	X	X	X	X	No
Plugins 1-1 “EMEA only”	X	X	X	X	X	X	X	X	X	X	No
Plugins 15-17 “EMEA only”	X	X	X	X	X	X			X	X	No
Plug ins 18-43,47 “EMEA only”	X	X	X	X	X	X				X	No
New Wireless Visitor ISM “EMEA & AP”	X	X	X	X	X	X				X	No
Singapore ISDN Enh. “Singapore only”	X	X	X	X	X	X				X	No
SDID number as CLID for EISDN “EMEA & AP”	X	X	X	X	X	X				X	No
Network Break-in and Force Disconnect “EMEA & AP”	X	X	X	X	X	X				X	No

Notes:

1. M3900 Enhanced Flash Download requires:
Rls 25.10 Plus MDCS, or Manufacture Patches,
Or Rls 25.15 or higher.
2. The OTM 1.01 upissue or MAT 6.67 update disk (ITGL content) is required to support Internet Telephony Gateway Line-Side ITGL in Expansion cabinet in survival mode with Option11C/Mini IP Expansion.
OTM 1.2 is supporting Release 25.40 features; **MAT is NOT supported on Release 25.40 or later**
3. MAT 6.67.07 plus update disk or OTM 1.01 is required to support ITG in expansion Cabinet with Rls 25.30.
4. i2004 Internet Telephone requires :
Release 25.15 Plus Patches, Release 25.30 Plus MDCS or Release 25.40
5. New Large System Clock Controller NTRB53 requires Release 25.40 in order to download New Firmware,
Existing clocks continue to be supported on Rls 25.40, and the new clock controller NTRB53 is backward compatible with Releases 19 to 25. New Clock H/W will not be available until Q1 2002. Please look for Product Bulletins announcing H/W availability
6. Requires Option 81C with CP PII, Applications may require updating in order to account for additional ACD DNs
7. Refer to M3900 Phase III Product Bulletin for details of Rls 25.40 M3900 Enhancements.
8. ITG Line-Side 2.2& i2050 Soft phone will be available after the introduction of Release 25.40. A specific market notice will be sent out to confirm availability
9. MISIP and DPNSS support for IP expansion will be on control release with the introduction of Release 25.40

2.3 Release 25 Peripheral Software Downloadable (PSDL) Listing

Loadware	Release 25.10 Small / Large PSWV 36/19	Release 25.15 Small / Large PSWV 38/33	Release 25.30 Small / Large PSWV 70/53	Release 25.40 Small / Large PSWV 77/77
LCRI	LOADAA02	LOADAA02	LOADAA02	LOADAA02
XNET	LOADAC23	LOADAC23	LOADAC23	LOADAC23
XPEC	LOADAC35	LOADAC35	LOADAC38	LOADAC38
FNET	LOADAA06	LOADAA06	LOADAA06	LOADAA06
FPEC	LOADAA07	LOADAA07	LOADAA07	LOADAA07
MSDL	LOADAJ70	LOADAJ70	LOADAJ70	LOADAJ71
ASYN	LOADAH50	LOADAH50	LOADAH50	LOADAH51
DCH1	LOADAJ70	LOADAJ70	LOADAJ70	LOADAJ71
MLNK	LOADAK80	LOADAK80	LOADAK80	LOADAK81
BRIL	LOADAK81	LOADAK81	LOADAK81	LOADAK82
BRIT	LOADAK80	LOADAK80	LOADAK80	LOADAK81
MISP	LOADAJ70	LOADAJ70	LOADAJ70	LOADAJ71
MPHA	LOADAH50	LOADAH50	LOADAH50	LOADAH51
BRSC	LOADAJ70	LOADAJ70	LOADAJ70	LOADAJ71
BBRI	LOADAH52	LOADAH52	LOADAH52	LOADAH53
PUPE	LOADAK80	LOADAK80	LOADAK80	LOADAK82
BRIE	LOADAK81	LOADAK81	LOADAK81	LOADAK82
ISIG	LOADAA31	LOADAA31	LOADAA31	LOADAA32
SWE1	LOADBA49	LOADBA49	LOADBA49	LOADBA49
UKG1	LOADBA46	LOADBA46	LOADBA46	LOADBA46
AUS1	LOADBA46	LOADBA46	LOADBA46	LOADBA46
DEN1	LOADBA46	LOADBA46	LOADBA46	LOADBA46
FIN1	LOADBA46	LOADBA46	LOADBA46	LOADBA46
GER1	LOADBA50	LOADBA50	LOADBA50	LOADBA50
ITA1	LOADBA46	LOADAA49	LOADAA49	LOADAA50
NOR1	LOADBA46	LOADBA46	LOADBA46	LOADBA46
POR1	LOADBA46	LOADBA46	LOADBA46	LOADBA46
DUT1	LOADBA46	LOADBA46	LOADBA46	LOADBA46
EIR1	LOADBA46	LOADBA46	LOADBA46	LOADBA46
SWI1	LOADBA51	LOADBA51	LOADBA51	LOADBA51
BEL1	LOADBA46	LOADBA46	LOADBA46	LOADBA46

Loadware	Release 25.10 Small/Large PSWV 36/19	Release 25.15 Small/Large PSWV 38/33	Release 25.30 Small/Large PSWV 70/53	Release 25.40 Small/Large PSWV 77/77
SPA1	LOADBA46	LOADBA46	LOADBA46	LOADBA46
NET1	LOADBA48	LOADBA48	LOADBA48	LOADBA48
FRA1	LOADBA49	LOADBA49	LOADBA49	LOADBA49
CIS1	LOADBA46	LOADBA46	LOADBA46	LOADBA46
ETSI	LOADBA47	LOADBA47	LOADBA47	LOADBA47
E403	LOADBA07	LOADBA07	LOADBA07	LOADBA07
N403	LOADBA05	LOADBA05	LOADBA05	LOADBA05
JTTC	LOADAC08	LOADAC08	LOADAC08	LOADAC08
TCNZ	LOADAA13	LOADAA13	LOADAA13	LOADAA13
AUBR	LOADAA13	LOADAA13	LOADAA13	LOADAA13
AUPR	LOADAA04	LOADAA04	LOADAA04	LOADAA04
HKBR	LOADAA06	LOADAA06	LOADAA06	LOADAA06
HKPR	LOADAA08	LOADAA08	LOADAA08	LOADAA08
SING	LOADAA14	LOADAA14	LOADAA14	LOADAA15
THAI	LOADAA07	LOADAA07	LOADAA07	LOADAA07
NI02	LOADAB17	LOADAB17	LOADAB17	LOADAA21
TIIS	LOADAA09	LOADAA09	LOADAA09	LOADAA10
TIES	LOADAA09	LOADAA09	LOADAA09	LOADAA09
ESGF	LOADAA19	LOADAC20	LOADAC20	LOADAC22
ISGF	LOADAA17	LOADAC18	LOADAC18	LOADAC20
TEGF	LOADAA18	LOADAC19	LOADAC19	LOADAC22
TIGF	LOADAA16	LOADAC17	LOADAC17	LOADAC19
INDO	LOADAA06	LOADAA06	LOADAA06	LOADAA06
JAPN	LOADAA15	LOADAA15	LOADAA15	LOADAA15
MSIA	LOADAA04	LOADAA04	LOADAA04	LOADAA04
CHNA	LOADAA03	LOADAA03	LOADAA03	LOADAA04
INDI	LOADAA03	LOADAA03	LOADAA03	LOADAA03
PHLP	LOADAA02	LOADAA02	LOADAA02	LOADAA02
TAIW	LOADAA03	LOADAA03	LOADAA03	LOADAA03
EAUS	LOADAA01	LOADAA01	LOADAA02	LOADAA02
EGF4	LOADAA04	LOADAC05	LOADAC05	LOADAC07
DCH3	LOADAA09	LOADAA09	LOADAA09	LOADAA09
PUP3	LOADAA09	LOADAA09	LOADAA09	LOADAA09
TIE1	LOADAA11/15	LOADAA11/15	LOADAA11/15	LOADAA15
DITI	LOADAA33/34	LOADAA33/34	LOADAA33/34	LOADAA34
CLKC New Global Large System Clock [NTRB53]	NA	NA	NA	LOADAA06

Loadware	Release 25.10 Small/Large PSWV 36/19	Release 25.15 Small/Large PSWV 38/33	Release 25.30 Small/Large PSWV 70/38	Release 25.40 Small/Large PSWV 77/77
M3900 Loadware	M3900 Phase II (M3905 Phase I)	M3900 Phase II (M3905 Phase I)	M3900 Phase II (M3905 Phase I)	M3900 Phase III
1.Global Languages Set:				
M3902	LOADAA36	LOADAA40	LOADAA40	LOADAA80
M3903	LOADAA45	LOADAA51	LOADAA52	LOADAA80
M3904	LOADAA41	LOADAA46	LOADAA46	LOADAA83
M3905	LOADAA27	LOADAA32	LOADAA32	LOADAA83
2.Western Europe Languages Set:				
M3902	LOADBA36	LOADBA40	LOADBA40	LOADBA80
M3903	LOADBA45	LOADBA51	LOADBA52	LOADBA80
M3904	LOADBA41	LOADBA46	LOADBA46	LOADBA83
M3905	LOADBA27	LOADBA32	LOADBA32	LOADBA83
3.Eastern Europe Languages Set:				
M3902	LOADCA36	LOADCA41	LOADCA41	LOADCA80
M3903	LOADCA45	LOADCA51	LOADCA52	LOADCA80
M3904	LOADCA41	LOADCA46	LOADCA46	LOADCA83
M3905	LOADCA27	LOADCA32	LOADCA32	LOADCA83
4.North America Languages Set:				
M3902	LOADDA36	LOADDA40	LOADDA40	LOADDA80
M3903	LOADDA45	LOADDA51	LOADDA52	LOADDA80
M3904	LOADDA41	LOADDA46	LOADDA46	LOADDA83
M3905	LOADDA27	LOADDA32	LOADDA32	LOADDA83

3 System Advisements

In this document, Small Systems refer to the Option 11C and Option 11C Mini. Large Systems refer to the Option 51C, 61C, 81 and 81C machine types. System Advisements are applicable to all System Types.

Where references are made to Release 25, the statements are applicable to Release 25.10, 25.15, 25.30 and 25.40.

3.1 Systems Supported

Generic X11 Release 25 supports the following machine types:

- Meridian 1 Option 11C
- Meridian 1 Option 11C Mini
- Meridian 1 Option 51C *, 61C, 81 and 81C
- Meridian 1 Option 81C equipped with Call processor PII

Note *: Option 51C is no longer sold as a new system, however Software upgrade only to 25.40 will be available to existing Option 51C systems.

PE and EPE Support

X11 Release 25.40

CP2, CP3, and CP4

Rls 25.40 supports the same PE/EPE equipment as all other issues of Rls 25 (i.e Releases 25.10, 25.15, 25.30) and the same as Release 24.25.

A very limited number of sites running release 25.10 have experienced sporadic digital set operation when combined with older PE and EPE hardware. This issue is related to the occasional loss of system messages between the CPU and the set. Release 25.15 and later contains a Message Buffering solution to address this issue.

PE and EPE hardware will be supported on X11 Release 25 subject to the following guidelines and limitations.

- CP2 (68040) System - EPE is supported
- CP3 (68060) and CP4 (68060E) Systems - EPE supported subject to guidelines listed below.
- CP PII (Pentium®) System does not support PE or EPE cards.

System Upgrade - CP3, CP4 - Guidelines

Due to differences in processing speeds of the CP3 and CP4 processors and EPE hardware, there are certain Customer Data Configurations that may be susceptible to performance degradation of Telephone sets connected to EPE. These are:

- Having the same Multiple Appearance Directory Number (MADN) on Telephones connected to the same Digital Line Card (DLC).
- Group Call configurations where the target sets are on the same Digital Line Card.
- Calling Party Name Display- longer names increase the potential for problems.
- Numbering schemes where Directory Number Expansion is used.

To ensure optimum performance, the above configurations should be avoided. In the event that this is not possible or practical, Nortel Networks advises that the EPE be migrated to IPE prior to upgrading to Release 25.

System Upgrade - CP PII

For upgrades to the CP PII processor platform, EPE cards will not be supported and will need to be migrated to IPE hardware. This refers to cards that plug into PE and EPE shelves (cards that have 1 1/2" spacing). Some telephone sets, such as SL1 sets (QSUXXX), may have to be replaced in this migration. Cards in the network shelves will continue to be supported. Connections from Networking Equipment to Meridian Mail and Digital Trunk/Primary Rate Interface are therefore not impacted by this requirement and remain supported in this configuration.

X11 Release 26 (when available)

The introduction of this release will no longer support Peripheral Equipment (PE) or Enhanced Peripheral Equipment (EPE) on any Meridian 1 system type.

PE or EPE includes the following:

1. All Peripheral Equipment/Enhanced Peripheral Equipment housed in old style Peripheral Equipment/Enhanced Peripheral Equipment shelves and
2. SL-1 proprietary telephone sets and attendant consoles associated with SL-1 line cards.

NOTE 1: “QPC” cards housed in CORE/Network shelves will continue to be supported on Release 26. For example, QPC 414 ENET cards will continue to be supported as an interface to Meridian Mail and Digital Trunk Interfaces (DTI) connection even though the card can no longer be used to drive Enhanced Peripheral Equipment (EPE) shelves.

NOTE 2: In order to allow our customers and distributors the ability to optimize resources during a system or software upgrade, Nortel Networks has not introduced any changes in X11 Release 26 to prohibit PE and EPE equipment. When a system is upgraded to X11 Release 26, the craftsperson can convert the desktop Terminal Number (TN) to the X11 Release 26 feature set. This eliminates the need to change the TN features and Services twice. Following the TN changes, the new IP shelf can be exchanged and the new desktop equipment installed and tested.

A list of the specific hardware that is impacted with the introduction of X11 Release 26 can be found in Sales and Marketing Bulletin North America [1323-G] dated October 2000 and titled:

“Peripheral Equipment (PE) / Enhanced Peripheral Equipment (EPE) Retirement Notification with Generic X11 Release 26”.

3.2 Feature Interactions

Microcellular features (packages 345, 346, 314, 302, 303) are not supported on any Release 25 based and later systems.

SILC and UILC cards were not supported in Option 11C/Mini IP Expansion (IPEX) cabinet for Release 25.30, but are supported with Release 25.40.

Meridian Home Office MHO-II is supported with Release 25.40, but is not supported with M3900 Phase III telephones.

Remote office (RO) 1.3 is supported with Release 25.40 but not supported with M3900 Phase III until the upissue 1.3.4 is available.

Release 25.40	M2000	M3900 Phase II [3902,3903,3904 I]	M3900 Phase III [3902,3903,3904,3905]
Remote Office [RO 1.2]	Supported	Supported	Not supported, continue to use M3900 Phase II or upgrade to RO 1.3.4 when available
Remote Office [RO 1.3.1]	Supported	Supported	Not supported, continue to use M3900 Phase II or upgrade to RO 1.3.4 when available
Remote Office [RO 1.3.4]	Supported	Supported	Supported

Support for telephone sets and the different versions of Remote Office (RO) and Release 25.40 as per the table above.

Remote Office 1.3.4 is a maintenance up-issue to provide full M3900 Phase III compatibility and General availability for Remote Office 1.3.4 will be early March 2002.

3.3 Real Time Impact of Release 25

The real time impact of Release 25 is shown in the following table. These values are based on the average basic calls measurements in combination with the real time impact on some basic market models which make extensive use of key features, such as: CPND, CDR, digital trunking, digital sets.

Machine type	24 to25
11C	6%
CP2: (51C/61C/81/81C)	16%
CP3: (51C/61C/81/81C)	6%
CP4: (51C/61C/81/81C)	6%

CP4 to CP PII improvement in real time capacity	
CP4 to CP PII: (Options 81C)	210% (= 3.1X)

Recommended Maximum Call Register Counts

The following tables detail the recommended Maximum Call Register Counts for Release 25 Call Registers are set in LD. 17, at the “NCR” prompt, after answering “Yes” to the PARM prompt

	11C	51C [CP2]	51C [CP3&4]
Recommended Maximum Call Register Count	1750	1500	2000

	61C [CP2]	61C [CP3&4]
Recommended Maximum Call Register Count	3000	4000

	81/81C CP2 W/ or W/o NCE	81/81C CP3&4 W/ or W/o NCE	81C CP PII With 5 or fewer groups	81C CP PII With 6 to 8 groups
Recommended Maximum Call Register Count	7500	10000	20000	25000

3.4 System Security

Nortel Networks strongly recommends changing the default system passwords for Meridian 1, Meridian Mail and Callpilot systems during initial installation. These passwords should be changed again when the system is placed in active service. These actions will help deter unauthorized system access which can result in toll fraud or system abuse. For more information, please refer to the System Security Management NTP [553-3001-302].

3.5 Audit routine

As in the case of previous software releases, it is recommended that the Audit routine (Overlay 44) be specified as the background diagnostic to optimize the system capability to deal with call processing anomalies, especially in large line size and high traffic configurations.

3.6 CallPilot Distributor Web Site for PEPs Identification

Please check on the CallPilot distributor web site for current information on any required PEPs for any given X11 software release.

The web site is at (North America): <https://www43.nortelnetworks.com/MPL>

The web site is at (Europe): <https://www21.nortelnetworks.com/MPL>

(This site is also found from Nortel Network's Customer Support website in the Software section.)

Please note that this site requires an account and password. If you do not currently have an account and password, and are a CallPilot distributor, please contact your regional sales representative for access to this site.

3.7 Symposium Distributor Web Site for PEPs Identification

Symposium Call Center Server SCCS have all the latest PEPs installed on it from the factory as per details on the SCCS Web Page <http://www.nortel-sccs.com/sccs.asp>

(This site is also found from Nortel Network's Customer Support website in the Software section.)

3.8 Cross Product Dependency List Information

The Meridian PEP Library now offers a new tool to allow quick identification of PEPs that may be recommended for a particular Application running on a specific Release of X11 software. This Dependency List information has been available on Web MPL for Symposium, CallPilot and Symposium Express since early 2001. X11 Release 25.40 will see the launch of several new Dependency Lists for Feature Groups such as Networking and IP.

The North America website address for WebMPL access is:
<https://www43.nortelnetworks.com/MPL>

In Europe website address for WebMPL access is:
<https://www21.nortelnetworks.com/MPL>

Access to the Meridian PEP Library does require a Distributor account and a password.

3.9 System Management

Customers that utilize third party management systems must ensure that the Management System is compatible with Release 25 software.

MAT 6.6X

MAT Release 6.67.04 supports Generic X11 Release 25.10 and associated features;

MAT Release 6.67.07 supports Generic X11 Release 25.15 and associated features.

MAT Release 6.67.07 plus update disk supports Generic X11 Release 25.30 and associated features

MAT is not supported on Release 25.40 or later, Please contact your sales representative for more information related to upgrade to OTM.
--

To confirm your MAT Release version, open MAT on your PC, in the MAT Navigator Window under Help, select About MAT Application.

For further information on MAT 6.67 please refer to the MAT specific General Release Bulletin, which will be shipped with each MAT order.

OTM 1.x

OTM 1.00 supports Generic X11 Release 25.15 and associated features

OTM 1.01 supports Generic X11 Release 25.30 and associated features

OTM 1.1 delivers additional functionality to manage the Survivable IP Expansion cabinets in the areas of Common Services and Maintenance in both the Windows and Web environment.

OTM 1.2 supports Generic X11 Release 25.40 and associated features.

The following X11 Release 25 Features require MAT 6.6x or OTM 1.0x for configuration - the features cannot be programmed through overlays:

- **ITG Trunks 2.0 with ISDN**- the configuration and maintenance of the IP Telephony Gateway (ITG) card is through the “ITG ISDN Trunks” application in MAT 6.67.04 or later or OTM 1.0.
- **Corporate Directory functionality** (one of the M3900 Digital Telephone Enhancements) - the configuration and maintenance of Corporate Directory requires MAT 6.67.07 or OTM 1.0. For existing MAT 6.67.04 sites, and up-issue to MAT 6.67.07 is required for Corporate Directory.
- **ITG Line Side & i2004 Internet Telephones** - the configuration and maintenance of the IP Telephony Gateway (ITG) IPE card is through the “ITG IP Phones” application in MAT 6.67.07 or OTM 1.0.
- **Option 11C/Mini IP Expansion** - MAT 6.67.07 Plus update disk or MAT 1.01 is required to support ITGL card in the Expansion cabinet in survival mode.

NOTE:

OTM 1.01 (Optivity Telephony Manager for Meridian) is a system management software product that provides a single point of connectivity to multiple Meridian 1 voice switches, Meridian Mail systems, and other applications.

OTM supports connectivity over serial, dialup/PPP, or Ethernet.

For more information about OTM 1.x, Release 25 Features that Require System Management please refer to the OTM 1.01, OTM 1.1 and OTM 1.2 General Release Bulletin when available.

3.10 Migration Pathways

Software Conversion

For Options 51C, 61C, 81, 81C, and 81C with CP PII direct software conversion is supported to X11 Release 25 from the following releases:

- X11 Release 19, 20, 21, 22, 23, 24

For Option 11C, automatic conversion is supported directly to X11 Release 25 from the following releases:

- X11 Release 16, 18, 20, 21, 22, 23, 24

For Option 11C Mini, automatic conversion is supported directly to X11 Release 25 from the following release:

- X11 Release 24

For more information on software conversion; refer to Upgrade and Conversion Procedures Document NTP [553-2001-320].

M3900 Digital Telephone Enhancements

The M3900 Digital Telephones have a Flash Memory download capability that allows downloading a new firmware version from the Meridian 1 to the M3900 telephone.

Firmware migration is supported using Flash download from:
Release 1 M3900 sets (X11 Release 24), to Release 3 (Release 25.40).
Release 2 M3900 sets (X11 Release 25.10, 25.15 and 25.30) to Release 3 (Release 25.40).

Additional migration information related to M3900 Series Enhancements can be found in M3900 Digital Telephone Phase III Product Bulletin.

4 Small System Advisements

The following advisements are for Small Systems (Option11C and 11C Mini) only:

4.1 Small System Controller and Memory Requirements

Option 11C Mini

The Option 11C Mini comes with 48Mb Total Memory (32 Mb Program Store and 16 Mb C-Drive space) on the Mini System Controller in order to run Rls 25 software. The supported Release 25 System Controller card for Option 11C Mini:

- NTDK97AB or higher (48 Meg - no memory upgrade needed) Mini System Controller (MSC)
- NTDK20EA or higher Small System Controller (SSC) for Option 11C Mini Main cabinet and IP Expansion chassis when using IP Expansion.(Rls 25.30 or later)

Please ensure that you have upgraded the bootcode on the MSC to NTDK34FA Rel 06 or higher.

Refer to NTP Upgrades Guide - Chapter 15 Use the flash boot ROM utility.

Software Daughter Board Requirements

The Option 11C requires a 48Mb Total Memory (32 Mb Program Store and 16 Mb C-Drive space) in order to run Release 25 Software. This requirement is met with the NTKK13AA or NTKK25AA blank Software Daughterboards.

New orders will receive the new NTKK25AA blank software daughterboard. This card is applicable for software release 25.30 or higher.

A system upgrading to Release 25 must replace its NTDK21 (32 Mb) or NTDK81 (40 Mb) based software daughterboard, with an NTKK13AA or NTKK25AA (48 Mb) daughterboard.

Please ensure that you have upgraded the bootcode on the SSC prior to upgrading the software daughterboard. To verify the size of the software daughterboard and for installation instructions, refer to NTP upgrade manual Chapter 9.

System Controller Card Requirements

The supported Release 25 System Controller card for Option 11C:

-
- NTDK20CA or higher Small System Controller (SSC)
 - NTDK20EA or higher Small System Controller (SSC) for Option 11C main cabinet when using IP Expansion and NTDK20CA or higher for each Expansion cabinet.(Release 25.30 or later)

An existing Option 11C system equipped with a controller card NTDK20AB can be upgraded to an NTDK20CA with a field upgrade kit NTDK19AA.

As of October 2001, the controller card provided is NTDK20FA.

4.2 Software Delivery

Option 11C Mini

- Pre-Programmed Mini System Controller (MSC) for new systems
- PCMCIA Card for upgrades
- Electronic Software Distribution (ESD)*

Option 11C

- Software daughterboard for new systems
- PCMCIA card for upgrades
- Electronic Software Distribution (ESD)*

* Please Refer to [Appendix B] for more information related to Electronic Software Delivery for Small Systems via Nortel Network's Customer Support website.

4.3 Software Conversion

Option 11C

Automatic conversion is supported directly to X11 Release 25 from the following releases (Note - not all releases were made available in all markets):

- X11 Release 16, 18, 20, 21, 22, 23, 24

Option 11C Mini

Automatic conversion is supported directly to X11 Rls 25 from X11 Rls 24.

4.4 Upgrades to Release 25 from Option 11/11E

The Option 11/11E systems running on pre-Release 22 software require a hardware upgrade to Option 11C in order to support Release 25. The Option 11C system offers a menu driven installation and upgrade method. Please refer to Option 11C Installation and or Upgrade Procedures Guide for additional information. Please read the Option 11C NTPs thoroughly before performing any hardware/software changes. All upgrade procedures should be strictly followed step by step.

4.5 Upgrades to Release 25 for Option 11C

The Boot Code on the SSC requires updating before upgrading software to Release 25.40. Refer to the "Small Systems Memory Requirements for Release 25" earlier in this Chapter for the requirements. Updating of the SSC Boot Code is a manual process that uses the Flash Boot ROM Utility. Refer to NTP 553-3021-250 Upgrade procedures, Chapter 13.

4.6 Upgrades to Release 25 for Option 11C Mini

Option 11C Mini was introduced with Release 24 on the NTDK97AA in Asia Pacific and EMEA. This vintage of the Mini System Controller does not have sufficient memory for Release 25. To upgrade to Release 25 the minimum vintage of MSC is NTDK97AB or higher.

The Boot Code on the MSC requires updating before upgrading software to release 25. Refer to the "Small System Memory Requirements for Release 25" earlier in this chapter for the requirements.

Updating the MSC Boot code is a manual process that requires a PCMCIA card programmed with R25. The upgrade is done using the Flash Boot ROM Utility in LD 143.

Refer to NTP 553-3021-250 Upgrade Procedures Chapter 13.

4.7 Basic Configuration Data

On Release 22.08, the "Basic Configuration" default data option provided only a configuration record and no other customer data. With X11 Release 22.16 and later, the "Basic Configuration" data option is expanded to include default data such as XPECs, Superloops, and other default data blocks. It doesn't include Model sets, routes, TN's etc. For complete default data including model sets etc., choose the Pre-Configured data option.

4.8 Use of BKO command in LD 43

The BKO command is used to backup the customer data to an external data card (blank PCMCIA card) located in slot "B" on the CPU faceplate.

Warning: If the pre-programmed software PCMCIA card is used during BKO operation, the card cannot be used to install software without first removing the backup data, reformatting the disk, and reprogramming with the appropriate software.

4.9 Backwards Compatible Daughterboard - NTDK26

The backward compatible daughterboard allows Option 11/11E/11C two cabinet (copper) systems to be upgraded to Release 25 maintaining copper connectivity.

The NTDK26 has a hardware key that prevents installation when the ethernet jumper (J7) is installed.

The ethernet jumper plug (J7) on the NTDK20 (Small System Controller) pack MUST be removed before the NTDK26 daughterboard is installed.

Note: Ethernet is not supported in this configuration

5 Large System Advisements

5.1 Call Processor Memory Requirements

Call Processor CP2 (68040), CP3 (68060), CP4 (68060E)

Release 25 Minimum Memory Requirements for CP2 (68040), CP3 (68060), or CP4 (68060E) processors:

Release 25 supports Motorola based Call Processors CP2 (68040), CP3 (68060) and CP4 (68060E) as well as Call Processor CP PII (for Option 81C only). 68030 Call Processors are not supported on Release 25.

Systems operating on Motorola based Call Processors must meet the following minimum Flash and DRAM memory requirements.

System	Flash Memory Requirement	DRAM Memory Requirement	Total Memory	Applicable Region
Option 51C/61C	32 MB	48 MB	80 MB	NA & EMEA
Option 51C/61C with (CP3, CP4 only)	64MB	80MB	144 MB	CALA
Option 81C on 68060/68060E with 5 or less Network Groups, or Option 81C on 68040	32 MB	64 MB	96 MB	NA & EMEA
Option 81C on 68060/68060E with 6 or more Network Groups	32MB	80 MB	112 MB	NA & EMEA
Option 81C on 68060/68060E with 6 or more Network Groups	64MB	80 MB	144 MB	AP
Option 81/ 81C on 68060/68060E any number of Network Groups.	64MB	80MB	144 MB	CALA

Release 25 Recommended Memory Requirements for CP4 (68060E) Processors:

System	Flash Memory Requirement	DRAM Memory Requirement	Total Memory	Applicable Region
Option 51C/61C	64 MB	64MB	128 MB	Global
Option 81/ 81C (with or without Fiber Network Fabric)	64 MB	96 MB	160 MB	Global

New Release 25 systems will ship with Call Processor CP4 (68060E) with the recommended memory configurations as shown in the table above. Call Processors CP1 (68030) and CP2 (68040) have been market retired and are no longer orderable. CP3 (68060) is also market retired in NA, AP and CALA markets.

Note *: Option 51C is no longer be sold as a new system, however software only upgrade to 25.40 will be available to existing Option 51C

Memory Upgrade

NTZC75 DRAM Memory Upgrade Kit supports 32 MB DRAM memory upgrade of Call Processors CP2 (68040), CP3 (68060) and CP4 (68060E). This kit contains one 32 MB DRAM SIMM and supports the memory upgrade of one call processor.

NTZC76 Flash Memory Upgrade Kit supports 32 MB Flash memory upgrade of Call Processors CP2 (68040), CP3 (68060) and CP4 (68060E). This kit contains Two 16 MB Flash modules.

NTZC77 kit contains the anti-static mat ESD wrist-strap, and instruction video which is required to perform a memory upgrade; NTZC77AA is not required if the distributor/customer already possesses the anti-static mat wrist-strap and video.

Call Processor CP PII

For Option 81C Systems on Call Processor CP PII:

Release 25.40

Option 81C CP PII with 5 or less network groups can continue to use DRAM 128 MB when upgrading to Release 25.40.

Option 81C CP PII with 6 or more network groups MUST upgrade their DRAM to 256 MB when upgrading to Release 25.40.

Release 25 Minimum and Recommended Memory Requirements for CP PII:

System	Flash Memory Requirement	DRAM Memory Requirement	Total Memory	Applicable Region
Option 81C CP PII With 5 or fewer Network group Release 25.15/25.30	N/A	128 MB	128 MB	Global
Option 81C CP PII With 5 or fewer Network group Release 25.40	N/A	128 MB	128 MB	Global
Option 81C CP PII With 6 or more Network group With Rls 25.40 or later	N/A	256 MB	256 MB	Global

Option 81C new systems will ship with CP PII (256-MB) with the introduction of Release 25.40.

5.2 Upgrading to X11 Release 25.40

For hardware upgrades that require (or elect) call processor upgrades, Call Processor CP4 (6860E) is available for Option 61C, 81/81C systems. Where the processor upgrade is to the CP4 (68060E), suggested memory configurations for Call Processor CP4 (68060E) are as per recommended memory configurations in Section 4.1.1

5.3 Software Delivery

Release 25 Software will be shipped via CD-ROM media only. This means that Release 25 requires an IODU/C (NT5D61) on a system operating with Call Processor CP2 (68040), CP3 (68060) or CP4 (68060E).

For an Option 81C system equipped with Call Processor CP PII, Release 25 requires a cPCI Multi-Media Disk Unit (NT4N43). The Multi-Media Disk Unit is automatically included with an upgrade to Call Processor CP PII.

Release 25 software and related documentation such as General Release Bulletins can be downloaded from the Software Downloads link via Nortel Network's Customer Support web site.

Refer to APPENDIX [B]: "Electronic Software Distribution (ESD)", of this document, for more details.

5.4 Call Processor CP PII – 256MB Memory Upgrade- Rls 25.40

The CP PII memory enhancement feature increases the memory to 256MB for new system and allows existing systems to upgrade their memory. To upgrade existing CP PII (128MB) hardware; a 256MB memory upgrade kit shall be used with the following order codes:

256 MB CP PII memory upgrade Kit for one CPU only - NT4N19AA / A0856417

Two memory upgrades kits are required to upgrade a system, this feature will not support true redundant mode in a mixed-memory configuration.

Upgraded CP PII CPU Board (A0786611 or A0810496) from 128MB to 256MB will be coded with - NT4N64AA Rel 01
All new CP PII CPU (256MB) will be NT4N64AA Rel 02 / A0844698

CP PII with 256 MB of memory requires X11 Release 25.40 Software, and cannot be used with Release 25.30 or earlier releases.

5.5 Large System New Global Clock Controller - NTRB53

The NTRB53 Global Clock Controller will replace the QPC471H and QPC775F in new Option 61C and 81C systems.

Existing Clock Controllers QPC471 & QPC775 will continue to function with X11 Software Release 25.40, the new clock controller is not mandatory with Release 25.40.

The NTRB53 Clock controller retains existing functionality and software configuration of the clock remains unchanged.

Release 25.40 Software introduces a PSDL object to allow field upgrades of the clock's firmware.

The NTRB53 new clock controller is compatible with Option 51C, 61C, 81C and X11 Releases 19 to 25.

The NTRB53 Clock controller retains existing functionality, but it cannot co-exist with QPC471 or QPC775 in the same system.

The New Clock Hardware will be available after the introduction of Release 25.40.

6 Documentation

6.1 Release 25.40 Documentation Overview

The Release 25 documentation suite has been updated for Release 25.40 to reflect the new content. The changes include:

- **What's New for Meridian 1 X11 Release 25.40 Guide - P0942056**
This document contains the following information for each of the new features of Release 25.40:
 - Description
 - Operating Parameters
 - Feature Interactions
 - Feature Packaging
 - Feature Implementation
 - Feature Operation
- Meridian Electronic Reference Library (MERL) CD-ROMs will be included with each Release 25.40 software order.
The order code is NTLH19AC -A0859697, it will include the application NTP CD-ROM and the Meridian 1 CD-ROM.
(The Meridian 1 CD-ROM is no longer separately orderable.)
- Meridian IP Telephony Gateway (ITG) Line2.1 NTP will be part of MERL and will also be available on a separate CD-ROM, the order code for the individual CD-ROM is NTDW81AB - A0868154
- SIPE (DPNSS & MISP) content changes (post Release 25.30) will be added to the appropriate Option 11C and Option 11C Mini guides.
- CPP & FNF information that was in standalone NTP's for Rls 25.15 & Rls 25.30 has been rolled into the appropriate NTP's in the main suite.
- Library Navigator Release 25.40 (P0942452)
- There is one new coil NTP and four new binder NTPs added to the library:
 - Meridian/Succession Systems Remote Office Guide (Binder)
 - Meridian/Succession Systems Internet Application and Terminals description Guide (Binder)
 - Meridian/Succession Systems Integrated Applications Guide (Binder)
 - Meridian Telephone and Console Description reference Guide (Binder)
 - Meridian /Succession Internet Terminals Description Guide (Coil)

The following items are discontinued with Release 25.40:

- Condensed library
- Spiral binding of I/O Guides
- Meridian 1 CD-ROM NTP (MERL CD-ROM includes Release 25.40 information)
- CP PII Guide (Merged into the appropriate documents in the Reference Library)
- FNF Guide (Merged into the appropriate documents in the Reference Library)
- Meridian 1 X11 Task System Programming guide.
- Meridian 1 X11 Task Fault Clearing task guide.

6.2 Documentation Order Codes

Release 25 Meridian 1 CD-ROM

Description	Rls 25.30 PEC CPC Codes	Rls 25.40 PEC CPC Codes
Meridian Electronic Reference Library [MERL] Option 11C-81C	NTLH19AB A0835745	NTLH19AC A0859697
Meridian IP Telephony Gateway [ITG] line.	NTDW81AA A0806119	NTDW81AC A0870183

Option 11C and 11C Mini Release 25 Documentation [English]

Description	Rls 25.30 PEC CPC Codes	Rls 25.40 PEC CPC Codes
Option 11C English - Coil Package	NTTK31AC A08185245	NTTK31AD A0872793
System Security Management	N/A P0913527	N/A P0949474
Option 11C Planning and Installation	N/A P0915838	N/A P0985656
Option 11C and 11C Mini Fault Clearing Guide	N/A P0915839	N/A P0915839
Option 11C and 11C Mini Central Answering Position Guide	N/A P0910772	N/A P0910772
Option 11C and 11C Mini Customer Controlled Back-up and Restore Guide	N/A P0910773	N/A P0910773
Option 11C and 11C Mini Upgrade Procedures Guide	N/A P0915840	N/A P0949475
Input/Output Administration Guide	N/A P0915832	N/A P0942453
Input/Output Maintenance Guide	N/A P0915833	N/A P0942455
Input/Output System Messages Guide	N/A P0915834	N/A P0942454
Option 11C Survivability	N/A P0919734	N/A P0949476

Description	Rls 25.30 PEC CPC Codes	Rls 25.40 PEC CPC Codes
Option 11C Mini English - Coil Package	NTKG80CG A0818640	NTKG80CH A0872530
System Security Management	N/A P0913527	N/A P0949474
Option 11C Mini Planning and Installation	N/A P0910788	N/A P0910788
Option 11C and 11C Mini Fault Clearing Guide	N/A P0915839	N/A P0915839
Option 11C and 11C Mini Central Answering Position Guide	N/A P0910772	N/A P0910772
Option 11C and 11C Mini Customer Controlled Back-up and Restore Guide	N/A P0910773	N/A P0910773
Option 11C and 11C Mini Upgrade Procedures Guide	N/A P0915840	N/A P0949475
Input/Output Administration Guide	N/A P0915832	N/A P0942453
Input/Output Maintenance Guide	N/A P0915833	N/A P0942455
Input/Output System Messages Guide	N/A P0915834	N/A P0942454

Description	Rls 25.30 PEC CPC Codes	Rls 25.40 PEC CPC Codes
Option 11C Mini Fiber Expansion Package - English	NTTK38AC A0818527	NTTK38AD A0874342
Option 11C Mini Planning and Installation	N/A P0910788	N/A P0910788
Option 11C and 11C Mini Expansion Guide	N/A P0915853	N/A P0915853
Option 11C Survivability	N/A P0919734	N/A P0949476

Option 11C and 11C Mini Optional Documents

Description	Rls 25.30 PEC CPC Codes	Rls 25.40 PEC CPC Codes
Option 11C and 11C Mini Technical Reference Guide - English	N/A P0915854	N/A P0942448
Option 11C ISDN BRI Hardware, installation and Maintenance - English	N/A P0915857	N/A P0942451
Option 11C 1.5 MB DTI/PRI - English	N/A P0915856	N/A P0942449
Option 11C 2.0 MB DTI/PRI - English	N/A P0915856	N/A P0942450

Option 11C and 11C Mini Release 25 Documentation [French]

Description	Rls 25.30 PEC CPC Codes	Rls 25.40 PEC CPC Codes
Option 11C French - Coil Package	NTTK31BC A0818525	NTTK31BD A0874338
System Security Management	N/A P0918368	N/A P0949477
Option 11C Planning and Installation	N/A P0915841	N/A P0949479
Option 11C and 11C Mini Fault Clearing Guide	N/A P0915842	N/A P0915842
Option 11C and 11C Mini Central Answering Position Guide	N/A P0910780	N/A P0910780
Option 11C and 11C Mini Customer Controlled Back-up and Restore Guide	N/A P0910781	N/A P0910781
Option 11C and 11C Mini Upgrade Procedures Guide	N/A P0915843	N/A P0949480
Input/Output Administration Guide	N/A P0915844	N/A P0949482
Input/Output Maintenance Guide	N/A P0915845	N/A P0985658
Input/Output System Messages Guide	N/A P0915846	N/A P0985659
Option 11C Survivability	N/A P0935783	N/A P0985664

Description	Rls 25.30 PEC CPC Codes	Rls 25.40 PEC CPC Codes
Option 11C Mini French - Coil Package	NTKG81CG A0818641	NTKG81CH A0875555
System Security Management	N/A P0918368	N/A P0949477
Option 11C Mini Planning and Installation	N/A P0910789	N/A P0910789
Option 11C and 11C Mini Fault Clearing Guide	N/A P0915842	N/A P0915842
Option 11C and 11C Mini Central Answering Position CAP Guide	N/A P0910780	N/A P0910780
Option 11C and 11C Mini Customer Controlled Back-up and Restore CCBR Guide	N/A P0910781	N/A P0910781
Option 11C and 11C Mini Upgrade Procedures Guide	N/A P0915843	N/A P0949480
Input/Output Administration Guide	N/A P0915844	N/A P0949482
Input/Output Maintenance Guide	N/A P0915845	N/A P0985658
Input/Output System Messages Guide	N/A P0915846	N/A P0985659

Description	Rls 25.30 PEC CPC Codes	Rls 25.40 PEC CPC Codes
Option 11C Mini Fiber Expansion Package - French	NTTK38BC A0818528	NTTK38BD A0874343
Option 11C Mini Planning and Installation	N/A P0910789	N/A P0910789
Option 11C and 11C Mini Fiber Expansion Guide	N/A P0915852	N/A P0915852
Option 11C Survivability	N/A P0935783	N/A P0985664

Option 11C and 11C Mini Optional Documents – Coil-[French]

Description	Rls 25.30 PEC CPC Codes	Rls 25.40 PEC CPC Codes
Option 11C and 11C Mini Technical Reference Guide - French	N/A P0915848	N/A P0985660
Option 11C ISDN BRI Hardware, installation and Maintenance - French	N/A P0915851	N/A P0985663
Option 11C 1.5 MB DTI/PRI Reference Guide – French	N/A P0915849	N/A P0985661
Option 11C 2.0 MB DTI/PRI – French	N/A P0915850	N/A P0985662

Option 51C to 81C Release 25 Documentation [English]

Description	Rls 25.30 PEC CPC Codes	Rls 25.40 PEC CPC Codes
Global Meridian 1 Reference Library	NTLH02AB A0828803	NTLH02AC A0859721
Meridian 1 X11 Release 25 Library Navigator	N/A P0934461	N/A P0942452
What's New guide- Release 25.40	N/A P0919733	N/A P0942056
Meridian 1 X11 Release 25 Planning and Engineering	NTLH03AA A0804746	NTLH03AB A0859742
Meridian 1 X11 Release 25 System installation	NTLH04AA A0804747	NTLH04AB A0859756
Meridian 1 X11 Release 25 System Maintenance	NTLH04AA A0804747	NTLH04AE A0859838
Meridian 1 X11 Release 25 Upgrade and Conversion Procedure	NTLH05AA A0804748	NTLH05AB A0859763
Meridian 1 X11 Release 25 Remote Services Products Guide	NTLH06AA A0804749	NTLH06AB A0859769
Software Feature Guide	NTLH08AA A0804751	NTLH08AB A0859771
Software System Management	NTLH10AA A0804757	NTLH10AB A0859794
Software Networking	NTLH11AA A0804767	NTLH11AB A0859795
Meridian 1 X11 Release 25 Software Meridian Data Services	NTLH12AA A0804771	NTLH12AB A0859796
Meridian 1 X11 Release 25 Software Automatic Call Distribution	NTLH13AA A0804775	NTLH13AB A0859798
Hospitality	NTLH14AA A0804777	NTLH14AB A0859799
Attendant PC Guide	N/A	NTLH15AB A0884082
Input/Output Administration Guide	N/A P0915832	N/A P0942453
Input/Output Maintenance Guide	N/A P0915833	N/A P0942455
Input/Output System Messages Guide	N/A P0915834	N/A P0942454

Individual Coil Guides

Description	Rls 25.30 PEC CPC Codes	Rls 25.40 PEC CPC Codes
Meridian 1 X11 Release 25 Library Navigator	N/A P0934461	N/A P0942452
Input/Output Administration Guide	N/A P0915832	N/A P0942453
Input/Output Maintenance Guide	N/A P0915833	N/A P0942455
Input/Output System Messages Guide	N/A P0915834	N/A P0942454
System Security Management	N/A A0913527	N/A P0949474
Meridian 1 X11 Integrated Voice Services	N/A P0909573	N/A P0909573
Meridian 1 X11 Release 25 Guide for the UK Option 11C-81C	N/A A0912437	N/A P0912437
Meridian 1 X11 Release 25 NT5D61 IODU/C Reference Guide	N/A P0912861	N/A P0912861
Meridian 1 X11 Release 25 Call Processor Card Field Memory Upgrade	N/A P0912862	N/A P0912862
Meridian 1 X11 Release 25 mini Carrier Remote Description, Installation and Operation	N/A P0914209	N/A P0914209
Meridian 1 X11 Release 25 Meridian Integrated Conference Bridge Description, Installation administration and Maintenance	N/A P0912865	N/A P0912865
Meridian 1 X11 Release 25 Meridian Integrated RAN Description, Installation and Operation	N/A P0912866	N/A P0912866
Meridian 1 X11 Release 25 Meridian Integrated Personal Call Director	N/A P0914163	N/A P0914163
Meridian 1 X11 Release 25 Meridian Integrated Personal Call Assistance	N/A P0914162	N/A P0914162
Meridian 1 X11 Release 25 Meridian Branch Voice 1.0 Description, Installation and Operation	N/A P0912867	N/A P0912867
Meridian 1 X11 Release 25 Meridian Internet Telephony Gateway [ITG] Trunk 1.0 Basic pre-Trunk Signaling Description, Installation and Operation	N/A P0912863	N/A P0912863
Meridian 1 X11 Release 25 Meridian Internet Telephony Gateway [ITG] Trunk 2.0/ISDN Signaling Link [ISL] Port Description, Installation and Maintenance	N/A P0912540	N/A P0912540
Meridian 1 X11 Meridian Internet Telephony Gateway [ITG] Line Card 1.0 IP Telecommuter Description, Installation and Operation	N/A P0912864	N/A P0912864

Introductory Task Guides

Description	Rls 25.30 PEC CPC Codes	Rls 25.40 PEC CPC Codes
Meridian 1 X11 Task Basic Telecom Management Guide	N/A P0912434	N/A P0912434
Meridian 1 X11 Task Network Planning Guide	N/A P0912435	N/A P0912435

Optional Documents - Binders

Description	Rls 25.30 PEC CPC Codes	Rls 25.40 PEC CPC Codes
Meridian 1 X11 Release 25 DPNSS1	NTKF79AA A0788073	NTKF79AB A0859800
Meridian 1 X11 Release 25 DASS2	NTKF92AA A0788088	NTKF92AB A0859801

New Documents with Release 25.40

Description	Rls 25.40 PEC CPC Codes
Meridian / Succession Systems Remote Office Guide	NTLH02AF A0860307
Internet Applications and Terminals Description Guide	NTLH02AH A0860309
Meridian 1 X11 Release 25 Meridian Integrated Applications	NTLH02AJ A0860311
Meridian 1 X11 Release 25 Telephones and Console Description Reference Guide	NTLH02AG A0860308
Internet Telephony Gateway [ITG] Line 2.2 Card Description, Installation and Operation	N/A P0986457
Internet Terminals Description Guide	N/A P0986458

Release 25 Documentation individual Coil - [French]

Description	Rls 25.40 PEC CPC Codes
What's New X11 Release 25.40 - French	N/A P0943404
Meridian 1 X11 Release 25 System Overview - French	N/A P0986840
Meridian 1 X11 Release 25 Software Conversion Procedure - French	N/A P0986837
Software Security Management- French	N/A P0949477
Meridian 1 X11 Release 25 General Maintenance Information- French	N/A P0986843
Meridian 1 X11 Release 25 System Installation Procedure - French	N/A P0986842

Data Sheets

Description	Rls 25.30 PEC CPC Codes	Rls 25.40 PEC CPC Codes
Meridian 1 X11 Release 25 Data sheet Note: Data sheets are not available in all regions.	N/A P0907149	N/A P0944014

Retired Documents for Meridian 1 X11 Release 25.40

Description	Rls 25.30 PEC CPC Codes	Note
Meridian 1 X11 Release 25 Software Input/Output Guides	NTLH09AB A0818140	Binding will be done in binder only (no spiral)
Global Release 25 CD-ROM Meridian 1 Reference Library Option 11C-81C	NTLH01AC A0828806	MERL CD includes Release 25.40 information
Meridian 1 X11 Release 25 Meridian Condensed Library	NTLH17AB A0828804	Discontinued.
Meridian 1 X11 Release 25 Call Processor PII Reference Library	NT5F36AA A0786997	Included in Meridian 1 Reference Library
Meridian 1 X11 Release 25 Fiber Network Fabric FNF Reference Guide	NT5F37AA A0786998	Included in Meridian 1 Reference Library
Meridian 1 X11 Release 25 Call Processor PII, FNF Description, Installation and Administration Guide	N/A P0914249	Included in Meridian 1 Reference Library
Meridian 1 X11 Release 25 Call Processor PII, FNF Software Upgrade Guide	N/A P0914248	Included in Meridian 1 Reference Library
Meridian 1 X11 Release 25 Task System Programming Guide	N/A P0912433	Discontinued.
Meridian 1 X11 Release 25 Task Fault Clearing Guide	N/A P0912436	Discontinued.

7 Software ISM & Packaging Changes

7.1 Software ISM

New ISM Counters

With the introduction of X11 Release 25.10, there were Six new ISM Parameters and Two changed ISM parameters for all systems.

There was one new ISM in Rls 25.30 for small systems only.

Release 25.40 introduces one new ISM Parameter.

Release 25 ISM Parameters

ISM Parameter	Systems	Release Introduced
ITG ISDN Trunks	All	25.10
Internet Telephones [*] NTZC82AA / A0804340 NTZC84AA / A0808998	All [Large system] [Small system]	25.15 + Patches Or 25.30 + MDCS
Attendant Consoles	All	25.10
Wireless Visitor “Not applicable to North America”	All	25.40
CLASS Telephones	All	25.10
Phantom Ports	All	25.10
Data Ports	All	25.10
Traditional Trunks	All	25.10
Analogue Telephones	All	Changed with 25.10
Digital Telephones	All	Changed with 25.10
Survivability NTSF8720 / A0784530	Small system Only	25.30

Note: Internet Telephones ISM Parameter is used for both i2004 and i2050
EMEA introduced Internet Telephones ISM Parameter with Rls. 25.15.

Changes to Existing ISM Counters

Release 25.10 changes

Counting of the existing two ISMs, ANALOGUE TELEPHONES and DIGITAL TELEPHONES are changed. CLASS sets are excluded from counting as ANALOGUE TELEPHONES. Data Ports configured in Overlay 10 are excluded from counting as ANALOGUE TELEPHONES. Data Ports configured in Overlay 11 are excluded from counting as DIGITAL TELEPHONES. These counters are set to 32767 for large systems and 2500 for small systems.

The D-Channel Expansion feature introduced in Rls 25.10 supports up to 255 (0-254) D-Channels per system for Option 81 and 81C machines; therefore, the maximum value of **DCH ISM** is 255.

Release 25.40 ISM Parameters changes (Small Systems –North America & CALA)

Release 25.40 or higher software provides the TMDI_D-Channel ISM defaulted to 64 so the separately orderable code (NTSF8730) is not required when ordering the TMDI Hardware Package - 1.5MB DTI/PRI (NTSF6800).

The maximum value for the TMDI_D-Channel ISM is 64.

Customers on Release 24.24 - Release 25.30 will still need to order the applicable TMDI Software package to increment the ISM parameter by one (1) per package.

The NTRB21AA TMDI card provides DTI/PRI functionality. The NTSF6800 package containing an NTRB21AA is compatible with X11.24.24 or higher software.

7.2 Software Packages

The following tables provide a list of the New and Enhanced Packages introduced in Release 25.40 and Release 25.30, their mnemonics, and their package numbers.

New Packages

Package Name	Package Number & Mnemonic	X11 Software Release	Supported System
IP Connectivity	295 IPEX (Standard package in EMEA in Release 25.40)	25.30	Option 11C & 11 Mini only
Attendant Announcement	384 ATAN	25.40	All
Priority Network Override	389 PONW	25.40	All
NI-2 Name Display	385 NDS	25.40	All
M3900 Productivity Enhancements	386 M3900 PROD-ENH	25.40	All
M3900 Virtual Office Enhancements	387 VIRTUAL-OFFICE-ENH	25.40	All
ACD DN Expansion	388 ACDE	25.40	Option 81C CP PII only

Enhanced Packages

New Feature	Package Number	Mnemonic	Package Name	Supported System
<ul style="list-style-type: none"> - Dynamic PSDL. - Keycode Enhancement. - CP PII Memory Enh. - New Large system Global Clock controller - ITGL 2.2 & i2050 - M3900 Phase III Enh. 	0	BASE	Base Software	<ul style="list-style-type: none"> -All -All - 81C CP PII -Option 51C &61C&81C. -All -All
NI-2 B-Channel Service Messaging.	291	NI-2	NI-2 TR-1268 Interface	All
Refine Corporate Directory Search	381	CDIR	M3900 Corporate Directory	All
Virtual Office Speed Dial Capabilities	382	VIRTUAL_OFFICE	M3900 Virtual Office	All
QSIG Message Waiting Indicator	305	QSIG-GF	QSIG Generic Functioning	All
<ul style="list-style-type: none"> - QSIG Message Waiting Indicator. - QSIG Call Completion &Call Diversion Interaction Enhancement. - Redirecting Name Display Enhancement for QSIG Call Rerouting. - CLID Enhancement for QSIG Call Diversion 	316	QSIG-SS	QSIG Supplementary Services	<ul style="list-style-type: none"> -All -All -All -All

8 Feature Overview

8.1 Release 25.40 Features Summary

The following list of features is the preliminary content list for Release 25.40. Please note that individual features may be added or deleted from this list depending upon development, market, or testing conditions.

QSIG Product Improvements:

QSIG Call Completion and Call Diversion Interaction Enhancement:

This product improvement provides for QSIG – MCDN and QSIG-QSIG gateways, the capability of employing Call Completion (CCBS and CCNR) when QSIG Call Diversion occurs.

CLID Enhancement for QSIG Call Diversion:

This product improvement provides for QSIG GF interfaces, the capability of displaying the correct CLID on the calling user's set when the diverted-to user set is rung during QSIG call diversion.

Redirecting Name Display Enhancement for QSIG Call Rerouting:

This product improvement provides for QSIG GF interfaces, the capability of displaying the redirecting name on the diverted-to user's set, during QSIG Call Diversion due to Call Rerouting algorithm, when the originating and diverted-to user's are present on the same node.

QSIG Message Waiting Indication

QSIG Message Waiting Indication allows Meridian 1 users, connected to a voice mail system on another vendor's PBX, to get a message waiting indication. This feature provides a means to pass the Message Waiting Indicator across a private QSIG network with Meridian and other vendors' PBXs. In the same way the feature allows a Meridian Mail hosted at a Meridian 1 switch to serve third party PBX users across a QSIG network.

ACD DN/CDN Expansion

The Automatic Call Distribution Directory Number/Control Directory Number (AC DN/CDN) Expansion feature (ACDE Package 388) increases the allowable number of ACD DNs and/or CDNs on a Meridian 1 Option 81C CP PII system from 240 to a maximum of 1000 for each customer. The number of customer groups remains at 100 and the system level total of configurable ACD DN/CDNs remains the same at 24,000.

Attendant Announcement

X11 Release 25.40 introduces the Attendant Announcement feature (AANN Package 384) delivers a pre-recorded message for calls terminated on the attendant, attendant queue, redirected to the attendant or night station. The Attendant Announcement feature provides different announcements based on the state of the call:

- Announcement when terminating to the Attendant (ANAT).
- Announcement when Night service is activated (ANNS)
- Announcement when Call forward No answer to the Attendant (ANFA).
- Announcement when Call forward Busy to the Attendant (ANFB).
- Announcement when Slow Answer Recall to the Attendant (ANSR).
- Announcement on Attendant Extended Calls (ANXC).
- Announcement when overflowed or forwarded (ANOF) if customer uses the Attendant Overflow Position (AOP) or Attendant Alternative Answer (AAA) features.

NI-2 Name Display Supplementary Service

Extend the Meridian 1 capability to support Name Display Information Elements from the public network on the National ISDN-2 NI-2 PRI interface and Display the calling name on incoming calls on the terminating set. As well, Meridian 1 will be able to send the Name Display IE's to the CO for delivery to the far end on private network links.

NI-2 B-Channel Service Messaging

This feature provides B-channel availability control on the NI-2 interface. With this feature service messages communicate B-Channel status changes to the far end. This feature provides the following enhancements:

- Increases B-channel availability
- Increases throughput on PRI service
- Reduce line degradation and number of lost calls
- Minimized the number of repeated calls on an out of service B-channel

ITG Line side 2.2 & i2050 Software IP Phone

The i2050 Software IP Phone is Windows-Based application that makes your desktop computer a powerful tool for unified voice, data and video communications.

The i2050 Software Phone supports the following:

- Traditional telephony features such as Call origination, Call Termination, Conference, Transfer, Hold, and Message waiting indication.
- Dedicated Hold, Release, Answer, Volume, Mute, Navigation and Message Waiting indication keys.
- Macro functions for programming lengthy dialing patterns.
- Powerful directory capabilities; locally stored on the PC or linked to external directories such as LDAP, Outlook, and ACT.
- DHCP- compliant services.
- Nortel Networks USB Audio Kit.
- “One-click” direct dialing from various windows and applications.
- Online help with full index search capabilities.

Survivable IP Expansion – MISP Support & DPNSS

Enable an MISP card to be supported in an Option 11C/11C Mini Survivable IP Expansion cabinet.

Auto Negotiation for SIPE

This enhancement creates a prompt in LD 117 that allows the user to turn on/off auto negotiation. The ability to control Auto negotiation on the Meridian 1 will simplify the installation and support routers and switches where auto-negotiation is turned on.

CP PII Memory Enhancement

Increases the amount of DRAM on the CPP processor from 128 MB to 256 MB. Required for all Release 25.40 and later CP PII Option 81C systems with 6 or more groups.

Large systems New Global Clock Controller

Introduces a new Global clock controller (NTRB53) for Option 51C, 61C, 81 and 81C systems.

The NTRB53 Clock Controller will replace the QPC471H and QPC775F in new systems. Existing Clock Controllers QPC471 & QPC775 will continue to function with X11 Software Release 25.40. The NTRB53 Clock controller retains existing functionality and software configuration of the clock remains unchanged.

Meridian X11 Release 25.40 software introduces a PSDL object to allow field upgrades of the clock's firmware. The NTRB53 new clock controller is compatible with Option 51C, 61C, 81C and X11 Releases 19 to 25.

New Wireless Visitors ISM

Introduces a new ISM for MDECT wireless visitors to differentiate them from "home" users.

Singapore ISDN Enhancement

This feature allows the Meridian 1 to interwork properly with Nokia CO switch for the Singapore ISDN interface. It allows the Meridian 1 to automatically restart the ISDN Trunks in the event that the link is torn down and reconnects again.

This Feature is introduced through modification to Singapore Loadware. This feature is available to Singapore Market only.

Network Break-in and Force Disconnect

The Network Break-in and force Disconnect feature allows an analog or digital set to perform the following functions:

- Break in to an established two- party call
- Force disconnect an established two-party call

Priority Levels PLEVs (0 to 7) are configured on a set basis, A set can break in or disconnect an established call only if it has a priority level greater than of the wanted and unwanted parties. This feature introduces Priority Network Override (PONW) Package 389, and available in AP, CALA and EMEA Markets only.

Dynamic PSDL

Dynamic PSDL will split the current PSDL file into 'individual' product loadware files. Meridian 1 will build the PSDL.rec file dynamically during installation from individual product loadware files. Previously the larger PSDL.rec file was included with the software during loadbuild. This will allow for field replacement of individual loadware files as required. It will also eliminate the duplication of loadware files for M39xx language management. With this functionality only 1 PCMCIA card for small systems is required to deliver the entire language file.

DPSDL provides a vehicle to introduce New Loadware to the field if required in a timely manner, without waiting for Software upissue and avoiding all upgrade related issues such as keycode, ordering codes, system management compatibility and applications compatibility.

Prior to the introduction of Release 25.40 (DPSDL Feature) a new X11 Software upissue was required to deliver new loadware upgrade

Keycode Enhancement Feature

The purpose of this enhancement is to modify the dependency between the X11 Software Keycode and the X11 software version release name. Currently, the keycode is linked to the release, issue, and phase letter i.e. 25.27A. . The Phase letter (a.k.a. subissue) is used for Beta releases of software.

This enhancement will remove the dependency of the keycode to the phase letter and leaves it linked to the keycode to the release and issue number only. This means that a new keycode will not be required to upgrade between Beta sub-issues of software (i.e. from 25.37B to 25.37C, etc.) as long as there are no changes to the other keycode parameters such as ISM parameters limits or package content. A new keycode will be required when upgrading to a different issue, such as the market Release version 25.40, or if other keycode parameters change.

Please note that the large systems keycodes generated for various phases within a release and issue (e.g. 25.37a, 25.37b) will differ from another but will work for any phase.

SDID number as CLID for Euro-ISDN trunk

The SDID functionality will be made available for Euro-ISDN calls with the introduction of Release 25.40. The SDID feature replaces the DN by the DID number of the IDC table in LD 15. This will be enabled for CLID option OPT1 [international calls], OPT2-OPT5 [based on APAC ISDN requirements for international calls]. This enhancement replaces the DN of an analog or digital set or an attendant console with incoming DID-DN. This feature is not applicable to trunks as originator.

PDT Password Enhancement

Allows an authorized Distributor or Nortel Networks Technician to change the diagnostic passwords.

The PDT Password enhancement gives administrators the ability to change the level 1 and level 2 PDT passwords. Currently this capability can only be delivered using patch MPLR13326. Starting with Rls 25.40 this capability is integrated into the software. With release 25.40 this password will need to be set in order to be able to access PDT.

Refer to X11 System Security Management NTP [553-3001-302]

PDT Access log Enhancement

As remote sessions can potentially occur anywhere on a network with access to the Meridian ELAN, this makes problem investigation much more difficult to coordinate.

Potential illegal accesses cannot be easily traced as the offender's login user ID is never output or recorded.

Also, because ELAN accesses are much more popular due to MAT/OTM availability, the file can be filled within hours rather than days.

This enhancement would allow the access log to record the user ID and increase the capacity to handle more entries in the log file.

Refer to X11 System Security Management NTP [553-3001-302]

Release 25.40 Enhanced M3900 Features

Refined Corporate Directory Search

Refined Corporate Directory Search introduces a new “Resume” soft key in the Corporate Directory screen so that the user can resume the keypad entry to enter additional letters to narrow the search further without reentering the letters from the beginning (for M3903, M3904 and M3905).

M3900 CTIA and TAPI

Delivers the M3900 CTIA and TAPI 2.1 service provider (for M3902, M3903, M3904 and M3905).

Headset Support When Handsfree Disabled

Currently, headsets are not supported when handsfree is disabled on an M3900 set. This enhancement will enable end users to use the headset key on their set if the administrator deems it necessary to deny the handsfree class of service (for M3903 and M3904).

Speed Dial Capabilities (Virtual Office)

The current Virtual Office feature enables users to log on to a host set and have their personal profile appear at that set. However, at the present time the configuration of speed call features on a virtual TN is prohibited. The change will be to enable usage of speed dial. (For M3903 and M3904).

Call Forward enhancements

The call forward number is automatically deleted if the user starts entering a new number rather than requiring multiple presses of the delete key (for M3902, M3903, M3904 and M3905).

Password Clear

When the switch issues the Directory/Call Log password reset command, the password is turned off instead of set to "12345678" (for M3903, M3904 and M3905).

Pause in dialing strings

Enables entering 1.5 second pauses in a dialing string. (For M3902, M3903, M3904 and M3905).

31 Digit Predial

Increases number of digits in the dialing strings from 24 to 31 for Call Log, Personal Directory, Redial List, & Predial (for M3902, M3903, M3904 and M3905).

Special Characters

M3900 character set will now include all the special characters defined in the ASCII character set to be used with set-to-set messaging, personal directory, editing feature key labels, etc. (for M3902, M3903, M3904 and M3905).

M3905 Phase III

Delivers most of Release 2 & 3 M3900 features to M3905 with common F/W on M3904 and M3905.

Virtual Office Login Enhancement

Currently only one user can log into Virtual Office at a time, and other users attempting to log in at the same time receive a "system busy, try later" message. This enhancement will increase the number of users that can log on at the same time.

One-button Access Keys

Improvements to the way the Personal Directory, Corporate Directory, Call Log, & Redial List features are accessed (for M3903, M3904 and M3905).

- Call Log and Redial List - One button access via softkeys or feature keys.
- Directory—user can start to conduct a directory search via the dial pad without pressing the Select softkey
- Corporate Directory-Users begin the search without pressing the Select key.

System Initiated Language Selection

M3900 sets on systems in different countries can initialize with a default language other than English. This eliminates the need for system administrators/users to have to go through the language selection option on each set to select a different language (for M3902, M3903, M3904 and M3905).

Set-to-Set Messaging Enhancements

Allows a system administrator to predefine ten messages that can be customized by the administrator to reflect the type of messages most often used by the users. Users can select one message to be sent as their Set-to-Set message and they can edit that one message to whatever they like. The user may only need to modify a small portion of the message to add the correct date/time, etc.. Only one message per set is actually stored in the system. (For M3903, M3904 and M3905)

Erase Callers and Redial List for Virtual Office

Allows the lists to be cleared when a virtual office worker logs out of the host M3900 set (for M3903 and M3904).

Automatic Logout for Virtual Office

Allows the administrator to specify a time in which all idle virtual terminals will be logged out. Also, if a user tries to log into a host terminal, but is still logged into another terminal, the first terminal will be logged out and the user will be allowed to log into the second terminal (for M3903 and M3904).

Full Duplex Handsfree

Delivers a full duplex handsfree cartridge to a new M3904 set.

M3900 Phase 3 Feature/X11 Release 25.40 Compatibility Table

Feature	Feature Package	M3902	M3903	M3904	M3905
Call Forward Enhancements	N/A	X	X	X	X
Password Clear	N/A		X	X	X
Pause in Dialing Strings	N/A	X	X	X	X
31 Digit Predial	N/A	X	X	X	X
Special Characters	N/A	X	X	X	X
Refined Corporate Directory Search	N/A		X	X	X
Headset State Support	N/A		X	X	
Speed Dial Capabilities (Virtual Office)	N/A		X	X	
Virtual Office Login Enhancement	N/A		X	X	
Computer Telephony Integration Adapter (CTIA)	N/A	X	X	X	X
PC Utility Adapter	N/A	X	X	X	X
Full Duplex Handsfree Accessory	N/A			X	
M3905 Phase 3 set	N/A				X
Secondary DN Dialing	N/A		X	X	X
One-button Feature Access Keys	Pkg. 386		X	X	X
Set-to-Set Messaging Enhancements	Pkg. 386		X	X	X
System Initiated Language Selection	Pkg. 386	X	X	X	X
Virtual Office Automatic Logout	Pkg. 387		X	X	
Redial & Callers List Erase (Virtual Office)	Pkg. 387		X	X	

8.2 Release 25.30 Features Summary

Option 11C/Mini IP Expansion

The Option 11C/Mini IP Expansion provides IP interconnection between Option 11C main and expansion cabinets. This IP interconnection enables:

- Increased Digital Trunking Capacity
- Voice Distribution over Campus Data Network via IP Expansion Cabinet
- Survivable Expansion Cabinets

This new feature is applicable to Option 11C and Option 11C Mini systems.

Meridian ITG line-side & i2004 Internet Telephones

The Meridian ITG Line-side offering and i2004 Internet Telephone unifies a number of enterprise-critical communication functions and provides the customer with the benefits of IP Telephony such as simplified management without sacrificing features, reliability or Quality of Service (QoS).

The Meridian ITG Line-side offering and i2004 Internet Telephone was introduced in EMEA with Release 25.15 plus patches.

The Scheduled Electronic Lock (SELK)

The Scheduled Electronic Lock (SELK) enhances of the Electronic Lock Feature.

The Scheduled Electronic Lock feature automatically locks telephone sets at predetermined times. These times are defined in the Scheduled Access Restrictions (SAR) database (Overlay 88). SAR group numbers are also defined in LD 88. A maximum of eight scheduled lock times can be assigned to each group.

Night Service Enhancement for BRI Trunks

Night Service Enhancement for BRI Trunks enhances the functionality of the Night Service feature. Night Service allows calls that are normally directed to the attendant to be routed to another defined destination. With the Night Service Enhancement for BRI Trunks feature, a Night Service DN (NITE) or Night Service Group number (NGRP) can be defined for BRI trunks.

Appendix A: Auxiliary Processor Alignment Release 25.40

Auxiliary Processor	Compatibility (Release)
System Management	
Meridian Administration Tools (MAT)	6.6x is supporting Release 25.30 MAT is <u>Not</u> supported on Rls 25.40 or later
Optivity Telephony Manager (OTM)	1.2 and later
Messaging	
Call Pilot	1.x
Call Pilot 100/150 for Option 11C/Mini	1.5
Meridian Mail	11.xx - 13.xx
Meridian Mail Card Option	11.xx - 13.xx
Meridian Mail reporter	2.x ^a
Wireless	
Companion DECT	45000302 or later (Not downloaded from Meridian)
Companion	3.xx - 7.xx (7.xx required for Enhanced Capacity)
Wireless IP Gateway	1.1x
Remote Product	
9150	1.3 or higher 1.3.4 is M3900 Phase III Concurrent
9110 & 9115	1.3.x or higher 1.3.4 is M3900 Phase III Concurrent
Meridian Home office MHO-II	1.18 is supported with Release 25.40, but Not supported with M3900 Phase III

Call Center Applications	
Meridian MAX	8.7, 9.2, 9.3, 10.x
Network Administration Center [NAC]	2.5 ^a
Meridian Customer Controlled Routing [MCCR] (Discontinued as of July 2000, SCCS offer the functionality of MCRR)	3B, 3C ^a
Meridian Link [Mlink] (Replaced by Meridian Link Services MLS)	5, 5C ^a
Meridian Link & MCCR Co-residency	6.0, 6.4
Meridian Link Services [MLS] (Part of SCCS, but sold as a separate product to replace Meridian Link)	4.0, 4.2
Symposium Applications & IVR	
Symposium Link	6.x
Symposium Agent Greeting	2.0
Symposium TAPI Service Provider / Symposium Agent	2.x
Symposium Desktop TAPI Service Provider for MCA (Meridian Communicator Adapter)	1.x – 2.x
Symposium Express Call Center [SECC]	2.x, 3.x
Symposium Call Center Server [SCCS]	3.x, 4.x
<p>SCCS 1.5 is a retired product. Customers should be upgrading SCCS to the latest supported release if they plan on running X11 Release 25.40. The upgrade sequence varies depending on which X11 Release you are upgrading from.</p> <p>X11 Release 24 and Release 25 Customers who are running SCCS Release 1.5 with X11 Release 24 or earlier versions of X11 Release 25 should upgrade their SCCS prior to upgrading to X11 Rls 25.40.</p>	<p>X11 Release 23 Customers who are running SCCS release 1.5 with X11 Release 23, should upgrade their Meridian 1 to Release 25.40, prior to upgrading their SCCS. SCCS release 1.5 support for 25.40 is being provided only to facilitate an upgrade path for those customers who are running SCCS 1.5 with X11 release 23. However, please note: SCCS 1.5 should only be run with X11 Rls 25.40 for a limited period of time during the transition to later releases, since problems reported with this combination will result in the fast tracking of the SCCS upgrade to a fully supported release</p>
Periphonics IVR (VPS)	5.x ^a
Periphonics IVR (MPS)	1.x ^a
Periphonics IPML (Peri-IPML)	2.0 ^a

^a No X11 dependency.

Appendix B: Electronic Software Distribution

Electronic Software Delivery for Meridian 1 Systems via Nortel Network's Customer Support website

The software download process is required to take compressed software from the Internet and download it to your PC for duplication. Electronic Software Distribution via Nortel Network's Customer Support website provides a common portal to available Nortel Software.

The following is an example of the Meridian 1 software available for download from the website.

- **Option 11C/11C Mini:** provides software and related General Release Bulletins.
- **Option 51C, 61C, and 81C:** system software, install disks, related MDCSs, and related documentation for all CPU types.
- **Network Management (MAT/OTM):** including system software, updates, PEPs, and related documentation.
- **Meridian Internet Telephony Gateway ITG; IP Telephony; IP telecommuter:** software and documentation for products such as ITG Trunk and Line side applications.
- **Meridian Integrated Products, including MIRAN, MICA, MICB, MIVS and MIPCD.**

Who has access to the web site?

Software distribution is designed for Nortel Networks Distributors and associated technical support personnel. In exceptional circumstances, end customers will be granted access to this site.

To register for an account:

Nortel Networks has adopted the Common Registration System (CRS). This provides one user I.D. and password to access the service websites such as the Software Distribution and Keycode Retrieval websites.

Go to <<http://www.nortelnetworks.com/>>, to "Customer Support" menu, choose "Register menu. Follow the registration process instructions.

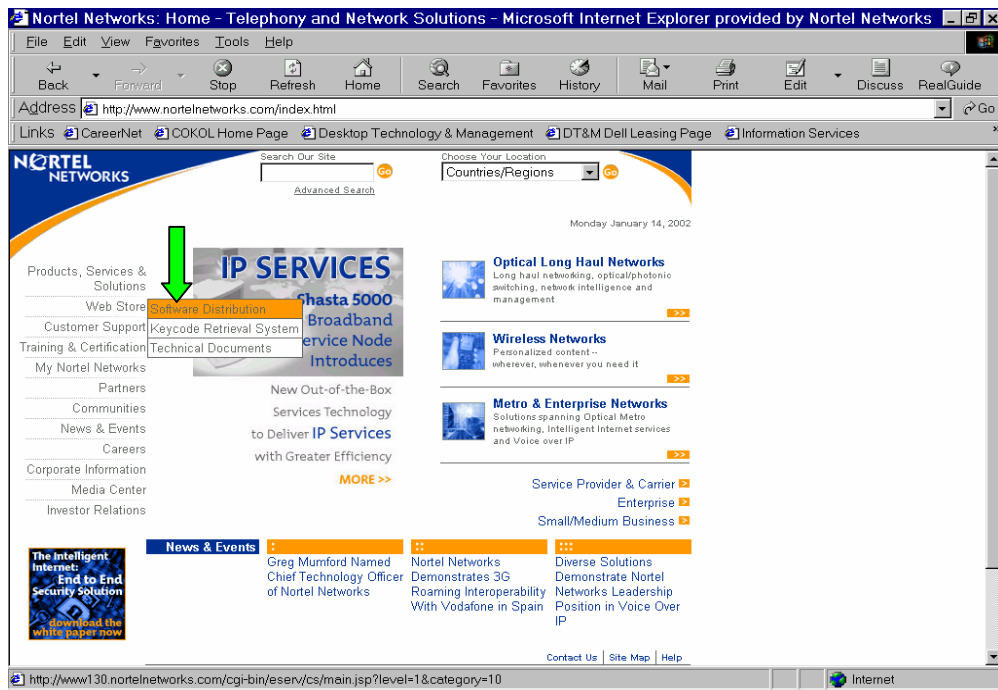
For further details, choose the "Getting Started with Customer Support" under "Support News" banner.

Software Download Steps:

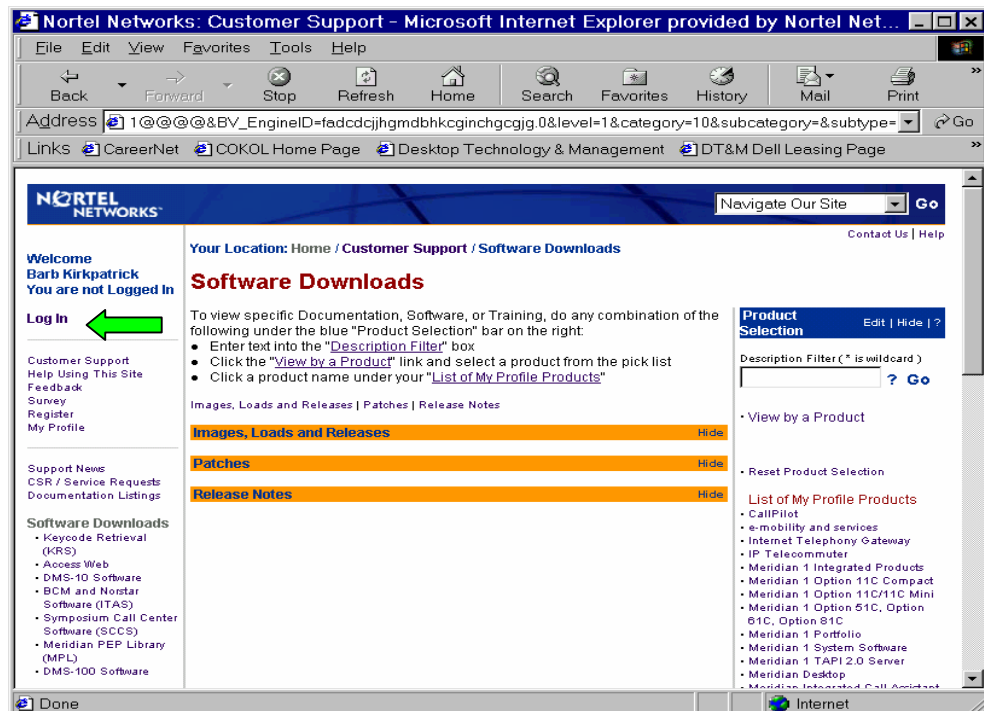
The software download site can be accessed through the following Customer Support website at:

<http://www.nortelnetworks.com>

Choose "Customer Support" – "Software Distribution" menu or "Software Downloads from Customer Support page."



To access the software as an authorized user, you must go to the “Log in” menu and apply your user I.D. and password. Before Log In, you will be able to view software as a Guest only.



Choose the product required in the Product listing (ie. Option 11C or Option11C Mini). To find the product listing, go to the « **Products** » banner and choose “View by a Product”. Highlight product(s) required and Save. Click on product under “List of My Profile Products” and you will be able to see all applicable software files.

Find the software file required (search by release may be available for some products). Click on your software selection. Then click on the executable file and/or applicable documentation file and save to your desktop.

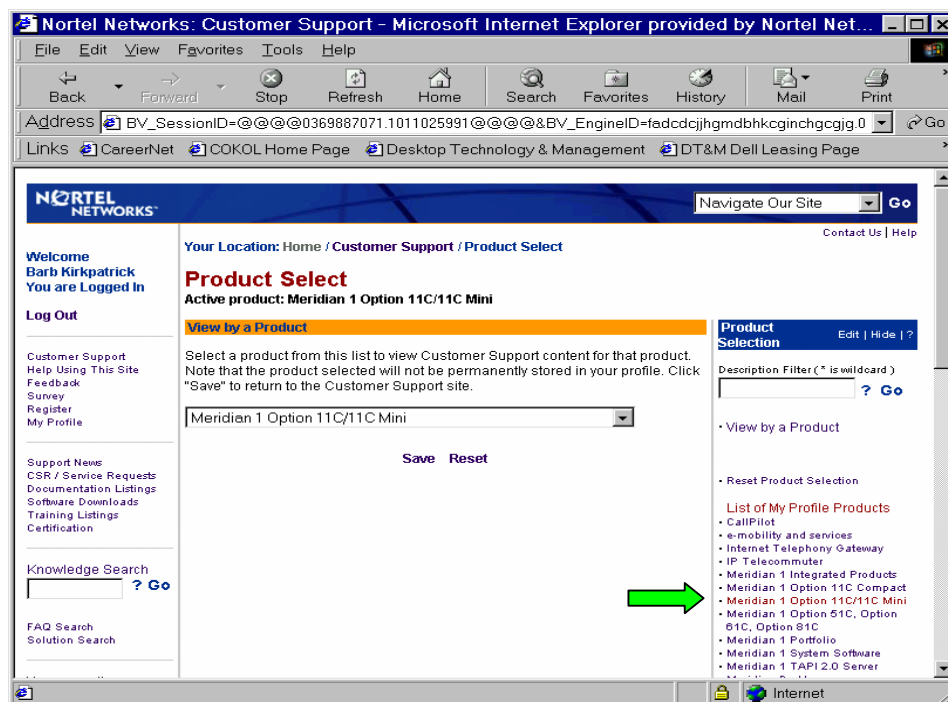
(If you do not see any software files available, you may need to go to “My Profile” menu and make sure the Software box is checked.

Pick Your Services

Hide

Edi
t ☐ Documentation
t ☐ Listings

Edi
t ☒ Software Downloads
Edi
t ☐ Training Listings



Nortel Networks: Customer Support - Microsoft Internet Explorer provided by Nortel Net...

File Edit View Favorites Tools Help

Back Forward Stop Refresh Home Search Favorites History Mail Print

Address <https://www130.nortelnetworks.com/cgi-bin/eserv/cs/main.jsp> Go

Links CareerNet COKOL Home Page Desktop Technology & Management DT&M Dell Leasing Page

NORTEL NETWORKS Navigate Our Site Go

Contact Us | Help

Your Location: Home / Customer Support / Software Downloads

Welcome Barb Kirkpatrick
You are Logged In

Log Out

Customer Support
Help Using This Site
Feedback
Survey
Register
My Profile

Support News
CSR / Service Requests
Documentation Listings

Software Downloads

- Keycode Retrieval (KRS)
- Access Web
- DMS-10 Software
- BCM and Norstar
- Software (ITAS)
- Symposium Call Center Software (SCCS)
- Meridian PEP Library (MPL)
- DMS-100 Software

Software Downloads

Active product: Meridian 1 Option 11C/11C Mini

Images, Loads and Releases | Patches | Release Notes

Images, Loads and Releases Hide

Description	Software Type	Release Date
• U.S.A. Release 25.30 (PSWV 70)	Rls 25.30	Aug 30, 2001
• M3900 Global Languages - 25.30 (PSWV 70)	Option 11C - PSWV 70	Aug 30, 2001
• Canada Release 25.30 (PSWV 70)	Rls 25.30	Aug 30, 2001
• CALA Release 25.30 (PSWV 70)	Rls 25.30	Aug 30, 2001
• Asia Pacific Release 25.30 (PSWV 70)	Rls 25.30	Aug 30, 2001

Top 25.30 All Software Types

Patches Hide

Software content for Meridian 1 Option 11C/11C Mini [25.30] is not available in this category. If you require further assistance please reference the regional contact information on the side menu area to the left.

Top 25.30 All Software Types

Product Selection Edit | Hide | ?

Description Filter (* is wildcard) ? Go

• View by a Product

• Reset Product Selection

List of My Profile Products

- CallPilot
- e-mobility and services
- Internet Telephony Gateway
- IP Telecommuter
- Meridian 1 Integrated Products
- Meridian 1 Option 11C Compact
- Meridian 1 Option 11C/11C Mini
- Meridian 1 Option 51C, Option 61C, Option 81C
- Meridian 1 Portfolio
- Meridian 1 System Software
- Meridian 1 TAPI 2.0 Server

Nortel Networks: Customer Support - Microsoft Internet Explorer provided by Nortel ...

File Edit View Favorites Tools Help

Back Forward Stop Refresh Home Search Favorites History Mail

Address https://www130.nortelnetworks.com/cgi-bin/eserv/cs/main.jsp?BV_SessionID=@@@0369887071.101 Go

Links CareerNet COKOL Home Page Desktop Technology & Management DT&M Dell Leasing Page

NORTEL NETWORKS Navigate Our Site Go

Contact Us | Help

Your Location: Home / Customer Support / Software Downloads / Software Detail Information

Welcome Barb Kirkpatrick
You are Logged In

Log Out

Customer Support
Help Using This Site
Feedback
Survey
Register
My Profile

Support News
CSR / Service Requests
Documentation Listings

Software Downloads

- Keycode Retrieval (KRS)

Software Downloads: Software Detail Information

Active product: Meridian 1 Option 11C/11C Mini

U.S.A. Release 25.30 (PSWV 70)

This area provides you with details regarding your software selection. Please note, you may need to right click on the File Download link and use the 'Save target as ...' option on your browser.

Software Family: Switching Products

Software Type: Rls 25.30

File Download: Release 25.30 + 14 PEPs (PSWV 70) USA (9932.80Kb) [exe]
Release 25.30 General Release Bulletin (Kb) [pdf]

Product Selection Edit | Hide | ?

Description Filter (* is wildcard) ? Go

• View by a Product

• Reset Product Selection

List of My Profile Products

- CallPilot
- e-mobility and services
- Internet Telephony Gateway

For Option 11C Software you will require the PCMCIA Card Programmer. If you do not already have the PCMCIA Card Programmer installed on your P.C., go to “Site Tools” in the pulldown menu from the Option 11C software page and download the Card Programmer (version 0.5 or higher).

The Programmer will prepare and if necessary erase the PCMCIA card (40 Mb or higher), and load the new software to the card. Open the PCMCIA Card Programmer, select the software from the applicable P.C. drive letter in step 1, then select the PCMCIA drive letter in step 2, click on Program PCMCIA card.

The PCMCIA Card Programmer is compatible with Window 95, 98, and Windows NT 4.0 and above. See Read Me file provided with the Tool for manual instructions.

When properly programmed, the software on the PCMCIA card will have the following directory and file structure:

- bootrom/
- dflt_db/
- p/
- u/
- dramos
- dramos.sym
- dramoscc.sym

A readme.txt file may also be present.

You are now ready to put the programmed card into slot A of the System Controller and proceed with the installation procedure.

For large systems software specific instructions, go to “Site Tools” of the pulldown menu on the Option 51C, 61C, 81,81C software page.

Appendix C: Resolved Problems

The following Problems found on previous GA releases of software have been resolved in Release 25.40.

Automatic Call Distribution ACD

PRs Number	Patches	Found in Release	Description
MP02590		24.23	When the ACD Observe feature is in operation and a call arrives at an agent that is subsequently put under supervision, when the supervisor releases a BUG5416 is outputted to the TTY. It is as a result of the conference situation dropping back to a simple call scenario
MP09022	MPLR12864	24.25	System is equipped with incoming DID, an attendant and an ACD-queue. Because if you are using DNIS, you cannot have a flexible dialing plan. If the M1 receives digits, which are less, then configured in NDGT, the Software is waiting for 12sec or for the end of dialing, before the call will be terminate.
MP10604	MPLR13054	23.47	ACD agent set does not display the 'NOT READY' screen after Meridian Link issues the 'NRD with no call disconnect' command.
MP10831		24.25	When an SCCS script has 2 routes call controlled commands, such that the ACD DN's specified in the script are both busy, it is expected that the call control should come back to the script. However, it was seen that even though both the ACD DN's were busy, M1 sends a successful response for the second ITR Route command.
MP11019		25.08	INI 2000 from ACD_OBSERVE / ONHOOK / DISCONNECT
MP10895	MPLR10162	25.15	BUG5013 output with NAS handling from CCR
MP09749	MPLR12989	23.37	Observe agent not working/agent can't xfer call after call comes via Symposium/IVR.
BV78567	2108	22.16	Analogue COTs lockup while waiting for night RAN
MP10743		25.15	ACD Supervisor call agent in MSB gets BUG576 & BUG577
MP11477	MPLR15555	25.15	2616 with 1 add on module not able to access RAN route
MP11963	MPLR14165	24.25	When Incoming calls are routed to the VRU system; and the ACD agent doesn't answer, Return to Queue RTQ on no answer doesn't work, and the call is ring on the ACD Agent instead of been routed to NCFW
MP12228	MPLR14478	24.25	One-way speech path if any set calls a symposium controlled CDN which gets then transferred to another symposium controlled CDN.
MP12605	MPLR15379	25.30	BERR705 from NETWK_ACD / CSAI / CSAI_HANDLER
MP12654	MPLR15399	25.15	Wrong .PCI NRD value sent to AML link

MP12782	MPLR12669	25.15	The Symposium 'Client Administration' has configured the 'Call Presentation Class' so that if the call is not answered in 10 seconds, it should route to queue and make the set busy, RTQ and put ACD 500 set in MSB status
MP04419	MPLR12821	25.10	BUG4001 messages with return address stack. This stack indicates that the problem appears to be with abandoned CCR calls.
MP13691	MPLR15742	25.30	Conflict with M1 and MLINK & MLSM Reason dot constants definition in the Codes.
MP11535	MPLR13629	25.15	Incoming DID call to CDN: CDN Name not displayed
MP12484	MPLR15602	25.15	SCH FOR ACD WITH CFW ACTIVE, If you do a service change on an ACD set with CFW active, right after the lamps are updated and switched to dark, but CFW and MSB remain active.
MP12861	MPLR15642	24.25	Calls end up in night mailbox instead of ACD agent during the day
MP04539	MPLR12433	23.37	INI 1D during call to SETSPEECH_IVR: ini 2000 BUG7058 SWD: Swd watchdog timer expired on task tSL1 INI 2000 bug7062
MP15301	MPLR15817	25.15	Data corruption of the first loop in each group.
MP14704		25.15	Phone set display "logged out" though set is actual login, SCCS Acquired phone set display show "LOGGED OUT" though set is actually logged in when set has NO NRD-key configured.
MP15396	MPLR15835	25.30	Certain of the Not Ready Activity codes aren't reporting correctly on SCCS. It's been confirmed that the SFN messages representing the occurrences where report data is missing are containing a call id where there should not be a call id on the SFN Not Ready message.
MP15030	MPLR15546	25.15	The ACD-C2 Report 4 (on ACD DN) always sets the OUT TIME field to the maximum value of 1800 seconds. The OUT TIME field indicates the duration of time for which an agent is busy on outgoing calls.
MP13788	MPLR16159	23.47	Transfer complete i.e. is missing in On Hook/disconnect messages sent to CTI, when an ACD agent completes transfer of a call to IDN on ringing to attendant.
MP12697	MPLR13568	25.15	AHA CLS Causes confusion on Symposium Call Centre (SCCS), Call pegs correctly in SCCS RTD and SCCS Agent Performance reports where the actual DN Talk Time whilst on a Consultative Transfer call is recorded.
MP15263	MPLR15812	25.15	No On hook/disc USM's when teslet EES at call clear down The "agents" have found out that if they hold down a keypad digit whilst the external party disconnects no notification of call clear down is sent to the CTI application
MP12365	MPLR14820	25.10	AML Link0 sends wrong ORIG DN for outgoing DTI2 MFC made by predictive application connected to M1 through 500 Line card. The outside customer answers a call and requests a transfer. The customer is transferred by the predictive application to an ACD queue on M1. The transfer is a two-step transfer. The pop up application, they see the ORIG DN and TER DN being the ACD queue when calls call through a MFC trunk. Everything is fine when the calls go through analog CO trunks.

MP16649	MPLR16060	25.15	No USM ONHOOK message received by the CTI application
MP15715	MPLR15874	25.15	If having entered activity code data during an ACD call or from the Not Ready state the user amends the input using either the * to delete one entry or # to delete all digits and start again the prompt " Enter Activity Code " is cleared. The problem is seen on both Aries and Taurus sets regardless of their acquisition state

CDR & Traffic

PRs Number	Patches	Found in Release	Description
MP12041		25.15	CDR Q record not outputting full 20 digit ANI/PANI. The M1 to output 20 digit ANI, including the ANI of the caller and a 10-digit cell site ID (PANI) on all 911 calls. The M1 should reflect both numbers in the CDR output (q record and n record). This is not happening. The q record is only showing the ANI of the caller (CPN), and is not displaying the cell site ID (PANI).
MP03118	MPLR12981	23.47	Dialed digit are not printing in the CDR report
MP10474	MPLR13394	24.25	Wrong "billing number " in CDR record.
MP11168	MPLR13351	24.25	CDR N-record on not answered calls DTI2 with OAN = yes
MP12414	MPLR09894	25.15	Watchdog timeout leads to INI related to CDR
MP12407		25.15	OVL16 - CDR OAL=yes OAN should default yes
MP10345	MPLR1332	24.25	TFC009 does not display the correct NAS
MP01951		23.47	MAX wait time for RAN trunks in TFC report

Attendant

PRs Number	Patches	Found in Release	Description
MP10004	MPLR13014	22.46	AUD014 when DPNSS Attendant recall [call in queue]
MP13011	MPLR15503	25.30	Attn cannot release call to Call Pilot after TAT- Bug295
MP11690		24.25	DN is displayed twice on ATT when set CFWD to ATT
MP12411		25.15	BUG6020 related to conference loop
MP14756		24.25	Group call from Attendant console impossible: aud10 ...

Maintenance

PRs Number	Patches	Found in Release	Description
MP04205	MPLR15666	25.15	BUG365 after upgrade
MP11204		25.30	Two definitions and uses of BUG5392

MP12158		25.15	IP address prints backwards when WHO command is entered
MP14118		15.15	Incorrect TN conversion in LD 32
MP07082	MPLR13016	25.10	LD 96 MAP DCH command does not work
MP13972	MPLR15649	25.15	ERR3036/ERR3037 with calls to/from a BCS phantom loop
MP15511	MPLR15841	24.25	BERR705 when attempting to output AUD003 information
MP14896		25.15	Trunks DES field does not print

Trunks

PRs Number	Patches	Found in Release	Description
MP10102	MPLR13224	23.47	Display name of isdn trunks doesn't work
MP11736	MPLR15584	25.30	CFNA over MCDN causes hanging trunks when original disconnects first.
MP10265	MPLR13350	24.25	With the International Supplementary Feature (Package 131), the caller hears the ring back tone in spite of the busy on the Analog DID line.
MP10602	MPLR15135	25.15	No CLID display on incoming DXUTJ call
MP10616	MPLR15490	24.24	Incoming DXUTJ CO trunk call forwarded to MMail drops
MP12437	MPLR15490	24.25	Incoming DXUTJ DID call not terminated
MP12842	MPLR15490	25.15	JDID does not tolerate incorrect CLID sent by DXUTJ
MP11379	MPLR13428	25.08	INI000 2000 around procedure SETSPEECH I
MP10680	MPLR15474	25.00	Unable to program BCOT if DAPC is not defined
MP11358	MPLR13436	24.25	ADL with empty PLN entry access to external trunks
MP14112		25	TMDI -- SSD Queue overflow -- TRK166 messages on opt11c, and DTI channel lockout
MP13466	MPLR15563	25.15	DID - TIE calls dropped to attendant
MP13519	MPLR15567	25.15	Set is not disconnected on incoming local CIS DTI2 call
MP10102	MPLR13224	23.47	Display name of ISDN trunks doesn't work

Call Processing

PRs Number	Patches	Found in Release	Description
MP11485	MPLR13539	25.15	GROUP HUNT/PLDN: CANNOT XFER CALL TO PLD
MP10173		25.15	Toll calls may be allowed for TLD set
MP10103		24.25	Cannot EES after CDP to UDP conversion a
MP10120		25.15	BUG5861 printout after pressing DSP + RN
MP11576		25.15	BUG4244 OUTPUT IS INCONSISTENT
MP11786	MPLR13862	24.25	NFCR override possible using * after ACO
MP11889		25.15	BUG6106 related to PLDN / group hunt
MP11890		25.15	BUG5182 related to VNS is inconsistent W
MP12415	MPLR15319	25.15	Cross-talk, BUG105, BUG365
MP12738		25.15	Failed to transfer because of the charge disp_act bit.
MP14755	MPLR15746	23.47	MUSIC ON HOLD (MOH) NOT RESTORED AFTER C
MP15004		25.30	Channel negotiation truncates CDR with OPD
MP13186	MPLR15524	23.47	BERR705 / INI From GLOBAL ACCESS ORIG TE
MP13465	MPLR15419	24.25	Intermittent INI 1D when attendant releases call.
MP15865	MPLR15901	25.30	Crosstalk after adding FIJI

MP14340		25.15	No range check in SET_ROUTE_PTRS can lead to BERR705The INI results in the usual loss of service to DASS/DPNSS circuits.
MP14450	MPLR15705	24.25	INI code c and SRPT786 RST 0: Task tSL1 being restarted
MP15552	MPRL15855	25.30	Call disconnected after attn expends across DTI, BUG 275

Feature

PRs Number	Patches	Found in Release	Description
MP09869	MPLR13001	24.25	BUG275 when attn extended {held} DPNSS call is answered
MP10204	MPLR13075	23.47	CDR S Record with PPM not printed for XFER to BRIL
MP10618	MPLR13251	25.15	Wrong status of BFS key in LD80 if lamp states changed in LD15
MP10635	MPLR13182	25.15	BSFE: Transfer with BFS key to boss only works once
MP10646	MPLR13185 MPLR15811	25.15	BFS key not updated anymore if RLS SCR key on ATT used
MP10734		25.30	All BFS Keys stayed lit after call was answered
MP10990	MPLR15421	25.15	BSFE: Can't transfer to busy set twice if RLS not hit
MP10991		25.15	DID call (for a park DN) comes in via DID route which has DNIS turned on, the call is not checked properly therefore the call is blocked
MP11135	MPLR13325	25.10	Crosstalk When Using Observe Feature
MP11384	MPLR13430	23.47	BFS and Group Call interaction does not work
MP11663	MPLR13714	25.15	If HOT line key number is more then 7. HOT LINE feature is not taking precedence over BSFE
MP11228		25.15	INI 1D from CND HANDLER / LINK
MP11919		25.15	Event Remote Notification ERN fails using 5 digit DN.
MP12097	MPLR14518	24.25	NO ARHA on digital set if Transfer or Conference aborted
MP09464	MPLR15550	22.46	"?" Appearing anywhere in the string of digits of the caller number on the display of the attn console (2250). The "?" on the display, it introduces a failure of their ICP computer system.
MP12295	MPLR15566 MPLR14848	23.47	Not possible to enter different hours for FWTM and BWTM
MP12473	MPLR15557 MPLR15054	25.15	Restriction by number of digits in FCR doesn't work
MP12509	MPLR15499	25.10	BFS and CFW key lock up with BFSE
MP12530	MPLR15565	25.15	Incoming call with invalid number terminates incorrectly
MP12832	MPLR15601	25	2500 sets will not forward no answer to Mail
MP12864	MPLR15471	24.25	BERR705 / INI related to BFSE feature code
MP08510		24.25	Hunting limited to 24 steps on Rls 24.25 when LSC used.
MP12245	MPLR14498	25.15	Cannot retrieve a parked call from an external trunk
MP12701	MPLR15422 MPLR15811	24.25	BSFE: BFS key continuously winks if RANA is activated
MP12469		25.15	INI when Symposium makes a call from a virtual 3904 set
MP12940	MPLR15486	25.15	Switch initialises every midnight due to TSBB S/W Watchdog expiration
MP13129		25.30	BUG500 is displayed when RCAP is not QMWI/QMWO.
MP12982		25.15	Loop 255 on an 8 group system cannot support the DCH

MP13767		24.25	Inbound ISDN calls to CallPilot through dialer to dummy ACD queue with a NAME defined in LD95, NCFW to a DN fails to display the name of the dummy queue in the display of a receiving digital set; but displays the name of the incoming caller.
MP12639	MPLR15359	24.25	BERR705 using ringing number pickup (RNP
MP13018	MPLR15420	24.25	CAMPON in MAIN_AUDIT idles timeslots, crosstalk results
MP08980	MPLR12863	24.24	Attendants can both park calls to the same call park DN
MP14866		25.10	Creating NEW sets with type 500 causes new templates to be created even though there are existing templates that should match. The new templates created have excess features that are not required, and may not even be allowed due to package restrictions
MP14725	MPLR15745 MPLR15915	25.15	RCFW to FFC speed call list is allowed
MP15360	MPLR15830	25.15	CHG 500 set cause hotline DN corruption
MP13219	MPLR15889	25.15	Service change de-activates GHD key
MP12640	MPLR13567	25.15	In LD 10 can't configure DCFW CFW <TO RPAX> when creating new set in OVL 10.
MP12797	MPLR15451	25	BERR705 due to invalid RPA_DNPSA_PTR during RPA call
MP16831	MPLR16107	25.30	Corruption to PLINE block of 2616 with AOM
MP15290		25.30	M2317 display not working

Call Processor CP2, CP3&CP4

PRs Number	Patches	Found in Release	Description
MP08347		25.10	No mailbox reached when call to GSM is redirected to Voice Mail
MP09847	MPLR14247	24.25	Inventory in overlay 117 shows wrong card
MP11235		25.15	Keycode file incorrectly named during data backup
MP10731		22.46	BERR700 not prevented, due to invalid call to intr TNMHT
MP09925		23.47	EDD is printing error messages due to corrupted reten.pch-file
MP11901	MPLR15590	25.30	BERR705 and INIT reason 0x00000002 from REM_RING_BCS
MP12366		25	Do not configure maximum number of call register
MP12383		25	Remove Distributor Dongle Lifespan Limitation
MP12561	MPLR15217	25.30	All Trunks Busy on ISA COT Service Route
MP11554	MPLR15424	24.25	BERR705 Bus Error in Task "trlogind00"
MP12426	MPLR13882	24.25	UNABLE TO DSBL 500 SETS/SL1 SETS. LAMPAUDIT STUCK
MP08394	MPLR15577	23.55	PDT LOCKUP - MAT USERS LOCKED OUT
MP13039	MPLR15501	25.15	Remote access logout via ELAN closes the wrong file descriptor
MP14174	MPLR15479	25.30	BERR705 from CONSOLE_DISPLAY / BCSOP / LINK_IN_OLD_Q
MP07092	MPLR15799	23.47	Disabled IGS slots and many AUD031 messages
MP13605	MPLR15796	25.15	SYS4438 SYS4474 when converting DB 16.92G TO 25.15
MP13345		23.55	MIK or MCK key twice with no digits does
MP12317	MPLR14523	25.15	INI2000 from Local Proc DCON_DIGITS in TCM_OUTPUT_MSG
MP13024	MPLR15667	25.30	Cannot remove / out TN built as TYPE OOSST
MP12779	MPLR15442	24.25	Several times a day BUG4129 is printed. As a result the message is not sent over the AML
MP13522	MPLR15579	25.30	2009/2018 set Lost Speech path on handset
MP13538	MPLR15578	25.15	Calls to third party IVR are defaulted because Symposium provides the default DN. This happens at random. ELAN trace from the PBX shows the correct number, but the Called DN type IE (H.3E) is 6 (CDP) not 8 (Internal)
MP13960	MPLR15653	25.30	Removal of XPEC Causes Corruption
MP12747	MPLR15441	23.55	MSDL102, MSDL112 during times of only low CPU load

Administration

PRs Number	Patches	Found in Release	Description
MP10466		25.10	Unable to use count and 1 st commands in LD 81
MP11934	MPLR15681	24.25	SCH1870 when change digital set to ACD s
MP12122	MPLR15457	25.15	ITG and Traditional ISM's miscounted after SYSLOAD aft
MP09621	MPLR15798	25.10	OVL 30 LOOP ALL Command causes NWS003 messages
MP09791		25.10	LUVU prompt in overlay 20 lists data TNs on new cards
MP10272		23.47	When a multiple DN is configured and a service change is made on one the sets the date is changed on more that one set.
MP10305		23.47	Impossible to print sets with OBV key in LD 81
MP10314	MPLR13097	25.15	Multilanguage strings sent in English on German sets
MP10625	MPLR15638	24.25	SCH5122 when trying to create a range of 5 digits VDNs
MP11219		25.15	AUTO CAMPON Flag is not cleared, when auto set to no
MP11257		25.30	Printing template users causes infinite loop
MP11492		25.30	DISC does not work properly for digital line card
MP11846		25.15	LD81 Count of all Features cause invalid customer value
MP12215		25.10	The prompt MCFN (display memory module information for M1 large systems) is usually displayed using LD22 PRT CEQU, but the prompt is available in LD17 CHG CEQU. Since this information cannot be changed by the user through software configuration, if the user attempts any input for this prompt in LD17, the result is SCH6633
MP12336		25.15	Supervisor has key configured as RAG, when tracking the supervisor in LD 80 the key is printed as CAT.
MP12628	MPLR15339	25	SCH0185 when programming (on a disabled superloop) 500 DN to AUDN
BV80901		23.47	PRI ERROR not printed in OVL117
MP13372	MPLR15605	25.15	No SCH5524 after changing MADN 500 to single 500
MP12937	MPLR15510 MPLR15485	25.15	Not possible to MOV 500 set from SD card to superloop
MP13909		25.15	Virtual sets: impossible to assign CLS CFXD
MP14800		25.15	MSDL0304, MSDL0305, MSDL0306 and other tool/diagnostic output give corrupted information regarding an MSDL.
MP14642		25.30	Can't create a default customer data block when the ANI package is restricted.
MP15003	MPLR15781	25.15	Unable to configure BDCH across groups using the same DNUM
MP15388	MPLR15823	24.25	XFEM Card Corruption When CHG Of APNSS In Overlay 14
MP15317		24.25	SLFT MSDL X causes BERR705 and BERR600 messages

Option 11

PRs Number	Patches	Found in Release	Description
MP11005		25.15	DCH will not enable when mixing TMDI and MSDI
MP11044		25.30	Intermittently XDLC In The Main Cabinet Not Enabled After Power-up
MP09831		25.10	NPR300 messages printed after midnights or LD32 PBXT ALL
MP12185		25.30	Digital trunks cards in the main cabinet cause XMI008 after XMI002, even when there is valid data for the card.
MP12257	MPLR14520	25.15	Sysload loop when using an invalid Corp Directory file
MP09987	MPLR13017	25.15	BERR705 using MAT or OTM to obtain info on I/O Ports
MP11677	MPLR14847	25.30	Copy command allows 24 sets to be copied on a DLC for unequipped slot
MP12201	MPLR15487	25.30	OVL0306 PSDL is not idled after failed download When a download is aborted there is a case where the sdl_pm is not reset and so the system thinks the PSDL is busy when it is not. The system has to be ini'ed to regain access to the PSDL
MP10649	MPLR14698	25.15	Unable to download MISP in slot 2 Option11C
MP11021	MPLR15629	23.35	Station Precedence call placement for Autovon
MP11814	MPLR15562	24.24	File descriptors not being closed properly
MP12230		25.30	The install program does not perform verification of bootrom when burning flash.
MP12529		25.30	The help screen for the Utilities Menu on a Main cabinet says that there are 8 options available, but the menu has 11. The help file should be updated to reflect the extra options.
MP12924	MPLR15481	25.15	INI D from markoverflow
MP12895	MPLR15477	24.25	BERR705, INI when using AWU (Automatic Wake Up)
MP12778		25.30	Customer removed TTY 0 in Cabinet 0 and cannot rebuild it. When trying to rebuild, in OVL 17, TTY 0 in Cabinet 0 an SCH5508 message (Same card and port number has been used)is printed when 0 is entered for the prompt CAB.
MP12887	MPLR15786	25.15	When you give in LD143 the command upgrade and you make an archived database and then you make a external back-up (XBK) the system reboots.
MP12888	MPLR15765	25.10	BUG6322, switch locks up with no dial tone
MP14753		25.15	The function 'showApIfData' to provide auxiliary processor Interface data gives an incorrect line of output.

CallPilot

PRs Number	Patches	Found in Release	Description
TM14128	MPLR13172	24.25	CallPilot: Cannot interact from BRI set
MP10860	MPLR15498	25.30	CallPilot through dial by attendant causes ULBLOCK corruption
MP11133	MPLR15647	24.25	Original dialed DN not displayed at attendant console
MP11139	MPLR14909	25.15	When CallPilot CDN is set up as the attendant overflow DN. External callers calling the attendant were not overflowed to CallPilot when the attendant was busy and the waiting threshold had expired. Call stayed in the attendant queue.
MP11541	MPLR15826	25.15	The M1 failed the local reserve feature requested by CallPilot
MP10848	MPLR11751	25.10	ESN access code inserted in front of mailbox number
MP12137	MPLR14308	24.25	INI000C removing call from CDN
MP16029	MPLR15848	25.30	Unable to retrieve parked call using CallPilot through dial

Pentium Call Processing CP PII

PRs Number	Patches	Found in Release	Description
MP09823		25.10	System will warm start when disabling the peripheral signaling (PS) card at the network group/shelf where the ENET card is resided and Meridian mail database configured.
MP10344	MPLR15679	25.15	CPP 3PE testing does not work properly
MP11093		25.15	SCPU - both side ID set to same core
MP11434	MPLR16056	25.30	After CPP graceful Switchover, using PDT II command to tell the information in current ACTIVE side sometimes shows "probs accessing entry: "error message(s).
MP11729	MPLR13795	25.30	CPP machine fail to cut-over
MP11823		25.30	After patches are installed with MDCS. At this point join the cpu's. The patches are no longer in service
MP12027		25.30	During Midnight routine bug2584 are printed
MP12211	MPLR15850	25.15	BUG2370 messages
MP12294		25.15	Cannot switch CPUs after a hot swap
MP12505		25.15	TFS004 idle cycle count is not large enough for CPP
MP12541		25.15	PDT command to show IRQ's does not give clean output
MP12607		25.15	Unable to change Baud rate on CPP CPSI port
MP13194		25.15	PDT shell MREGS Command does not work
MP13747		25.30	Too many interrupts cause stack overflow
MP16117	MPLR15962	25.15	After a restart in split mode no CPU takes the network
MP16299		25.15	Warmstart when OVL 135 is midnight routines

MP15482		25.15	The Instant ISM feature was introduced to eliminate the need to perform a sysload to update new ISM keycode parameters. However, new feature packages still require a sysload to become enabled. The Instant ISM Keycode Expansion feature and the CPP Hard Disk Redundancy features do not interact correctly.
---------	--	-------	---

IP Phone

PRs Number	Patches	Found in Release	Description
MP11975	MPLR14331	25.30	RUDP message queue stuck when packet lost on ELAN
MP12118	MPLR15704	25.30	"Observe ACD agent" causes involved i2004 sets reset
MP12272	MPLR14638	25.30	EDD and ELAN Failures with ITG Phones
MP12131	MPLR15508 MPLR14599	25.15	Creating IP set detracts ISM internet
MP12179	MPLR15766	25.30	Auto wakeup music/RAN does not work on i
MP13133		25.30	Unable to use CPY 32/AUTO command to configure i2004 sets
MP13602	MPLR15609	25.30	Loss of speech path when quickly logging into CallPilot
MP13791	MPLR12035	25.15	ITG line side card freezes when first set registers
MP15654		25.30	i2004 on SIPE: set is in MSBY in TTY but RTD on SECC
MP15695	MPLR16180	25.15	Wrong Dial Tone, no Ring back Tone on i2004
MP16367	MPLR15955	25.30	RFC Message Queue full prevents i2004s registration with M1

ISDN

PRs Number	Patches	Found in Release	Description
MP06693	MPLR12636	23.47	Call to 3rd party phone (across DPNSS link) which is call forward back to the M1 out across the PSTN fails.
MP09210	MPLR12874	24.25	No speech path with I/C DASS call CFU/CFB across QSIG
MP09437	MPLR12910	23.47	DSLs in Shelf 1 will not printed out in
MP09845		23.37	CLID does not get sent with OCLI set to YES for TCNZ int
MP09859	MPLR12998	24.25	QSIG: CFNR across QSIG gives wrong MMAIL
MP10006	MPLR13025	23.47	Crosstalk after PRI called party clears down.
MP10063	MPLR13312 MPLR15529	25.10	QSIG DCH Blocked when you unplug/plug the cable we get a SCH6723 When you decide to remove the DCH
MP10269	MPLR08407	24.25	Progress indication wrong on tandem
MP10647	MPLR13322	25.15	Path replacement not invoked rerouting to PLDN
MP10757	MPLR13215	24.25	No speech path to CallPilot when transfer call over ISDN: TRO "blank" messages being left on call pilot mailboxes.
MP11167	MPLR13179	24.25	Incoming calls to a set on a system via DID or COT trunk and FNA or HUNT to Call Pilot in anther system via CDP over QSIG PRI TIE trunks have some call scenarios that result in the caller not getting the called number's mailbox.
MP11294	MPLR13032	24.25	Stack Overflow Related to VNS INI's 005/2000/1D
MP11357	MPLR13424	24.25	QSIG: AUD032 printed when CFNR across QSIG
MP11521	MPLR13566	23.47	Can't xfer call on ringing from PSTN->MCDN TO MCDN->DTI2
MP12076		25.15	The Progress Indicator 16 "Inter-working with a public network " is not sent out on QSIG.
MP12091	MPLR12272	24.25	CC_RLS_RESP not sent for ESIG Trunk
MP12486	MPLR15076	25.15	INI 00000C OCCUR ON CALLS RECEIVED ON QSIG
MP12258	MPLR15568	25.15	System INI when CCBS performed across BRI QSIG to MCDN
MP07314		24.25	CFW not working if coming from euro trunk to Call Pilot
MP13140	MPLR15514	24.25	Charge display does not work with TAPI
MP10286	MPLR13087	24.25	BUG4001 and AUD033 on OVL R EURO/QSIG cal
MP11498	MPLR13559	23.47	No EODL signal on R2MFC after end of MFI
MP12492	MPLR15695	23.37	Cannot complete transfer to n/work call park DN with TAT
MP12863	MPLR15465	25.15	BERR705 / INI RELATED TO EUROISDN -> DPN
MP14307		25.30	Channel ID IE bit missing on TMDI card set for QSIG
MP15770		24.25	When a secure phone makes a call to a voice terminal the originating phone locks up
MP10676		22.46	Using VNS /NAS with DPNSS bearers to overflow calls to each node. If all nodes are in an overflow condition, the next call that is made is dropped.
MP13555	MPLR15684	25.15	QSIG: CALL FAILS WHEN CALL FWD ALL CALLS
MP11600	MPLR13651	25.15	Uncomplete CFW # via EURO ISDN produces bug105/1366/241

MP15788	MPLR15920	25.15	EURO-ISDN 64K-UNR CALL TERMINATES ON 2500-SET.
MP15483		25.30	Missing cc_release_conf message in China ISDN
MP15638		23.47	QSIG: CONNECTED # WITH MORE THAN 14 DIGITS DISCARDED
MP15869		25.30	BUG5417 IS GENERATED ON QSIG PATH REPLACEMENT
MP15741	MPLR15877	24.25	Crosstalk on call extended by ATT to MCDN with RCAP TAT

Small System IP Expansion

PRs Number	Patches	Found in Release	Description
MP10897		25.30	Can not configure primary reference from SILC for MISP2.0
MP11563	MPLR13735	25.30	Mail Treatment for sets in Survival Mode Fail Intercept
MP11626		25.30	System Lockup after performing commands in LD 117
MP11659	MPLR13817	25.30	Retrieving Mail in IP Expansion over PRI2 fails
MP11705		25.30	Established calls on IP exp. not released properly after an INI on the main cabinet
MP11306		25.30	DTI2 channels go into MBSY and DTI040 during midnights
MP11651	MPLR13734	25.30	Layer 3 IP expansion cabinets will not switch back to normal mode after it has been forced into survival mode by disconnecting the physical link. Switch back is successful only if overlay 135 is used (ie SOTS and SBFS).
MP12345		25.30	Survivable IP Expansion cabinets will not come up ,After entering MAC address for remote cabinet's SSC card, and rebooting the PBX the Expansion cards do not come up .
MP10277		25.30	When Exp Cab goes to Slave mode, DASS link has to be restarted manually
MP12379	MPLR15483	25.30	No audio on ran trunk in OPT11c, IP expansion
MP09996	MPLR12433	25.30	CPY 16 sets on single card causes MBUF copy error
MP12631		25.30	Survival tone should be flexible
MP15518		25.30	White noise
MP16673	MPLR16098	25.30	TMDI's in MAN DSBL and can't enable with MSDL016
MP16774		25.30	BERR705 in "tLSE_OMM" and the IP Expansion down

M3900

PRs Number	Patches	Found in Release	Description
MP08565		24.25	Transfer intermittently Fails on M3904 sets
MP10060		24.25	M3903, Cannot dial out while other DN is ringing on set
MP08750		25.10	System continues downloading after scheduled time.
MP12531	MPLR14248	25.15	M3904 with KBA, call on hold, lamp does not flash.
MP11779		25.15	M3900 does not recover from Automatic Set Relocation
MP08563		25.10	Taurus M3904/5 lockups due to TCM_Loopback_On message
MP10650		25.08	OBSERVE key not working properly on a SUPERVISOR set
MP11304		25.10	KBA DBA flashing the wrong key when DN key is U_HOLD
MP07627		25.10	XPEC locks up when plugging M3905 configured as 2616
MP10376		25.15	M3904: Display isn't cleared after dialing AUTH code
MP11647	MPLR13477	25.15	M3900: RANA Ring again on no answer doesn't work
MP11027		25.10	M3903 not logging new calls if two DN's flashing
MP12686		25.15	M3904 Call Forward Displays: for leading zero
MP09376		25.00	Context Sensitive Soft Keys unstable in Corporate Dir/Copy
MP07142		25.00	M3905 causes XPEC to fail if plugged into M2616 line jack
MP09844		25.10	Analog terminal Adapter (ATA) will not work on a 3905
MP07965		25.10	M3902 Display stuck after Download
MP10231		25.15	"Ring again is active" not displayed on 3903 set
MP12714		25.30	M3903 CFW key cannot be removed
MP12673		25.15	Impossible to login in two Virtual Office TN's simultaneously

SCCS

PRs Number	Patches	Found in Release	Description
MP12296	MPLR15453	25.30	No call offered messages when using DNIS
MP12271	MPLR14538	25.15	No calls presented if agent press NRD twice

MLINK

PRs Number	Patches	Found in Release	Description
MP10122	MPLR13054	23.47	Agent displayed login screen after LINK 'NRD' command
MP10143		25.10	Unable to drop conference with MLINK

Miscellaneous

PRs Number	Patches	Found in Release	Description
MP13664	MPLR15594	25.15	MDECT sets do not display incoming CLID if originator is DASS2
MP12421		25.15	Calling number ID not sent to Radio-page
MP12878	MPLR15762	25.30	Windows2000 and Windows NT formatted PCMCIA causes BUG6334 on both Opt11C and MINI systems
MP06419	MPLR12608	23.47	Set based OA&M access via MCDN fails on MIRAN
MP12608		25.30	When modifying CNI to add new network group in LD 17 receive SCH5690 or SCH5805.
BV74795	MPLR10970	23.30	RAN in CKM mode does not start with DDL option
MP13376	MPLR15549	25.15	Switch INI after multiple berr705 messages with an attempt to make network skill set based routing calls.

MDECT

PRs Number	Patches	Found in Release	Description
MP10636		25.15	DCS attempting XFER, held call lost if overflow timeout.
MP11912	MPLR15460	25.15	Incorrect protocol when DECT set is activated
MP11946	MPLR15450	25.15	ERR140 printed for a non-concentrated DE
MP11947	MPLR15425	25.15	Incorrect information printed with ERR14
MP11960		25.15	No BUG message displayed when software error occurs
MP12725	MPLR15428 MPLR15470	25.15	Camp On does not work with twinned DCS sets
MP11958		25.15	Some times in LD 32 and doing a stat of a DMC card where the sets are DCS, you may see a channel as Idle when in fact the channel is busy.
MP15139		25.30	LD 10: HMDN feature is added to all templates

MP11740	MPLR14337	25.15	Printout of DMC cards is incorrect and d
---------	-----------	-------	--

Appendix D: Known Issues & workarounds

This is a view of known highest priority unresolved problems, applicable workarounds and available patches as of **January 30, 2002**.

They have been categorized as applicable to all supported systems, or to specific system types as indicated. This does not mean your system(s) will see each of these problems. As indicated, Patches are available for certain problems as of the writing of this document. Refer to the PEP library for updated list of applicable Patches for Release 25.40.

For Problems where PATCH listed to resolve this problem, Please contact your Customer Technical Services group for the installation of the Patches.

	KEY
Problem Category	Major Feature or Area of Problem Ref: BV or MP Number PATCH: MPLR Number if available by January 30,2002 .
Date reported	The date that the problem was escalated to Technology. Format: mm/dd/yy
System impacted	The machine types that the problem could exist on. All is the default value for this field.
Software reported on	The software release that the problem was reported on.
Description of incident	The scenario that resulted in the problem and description of the problem including system output if appropriate.
Impact on system operation	Problems are categorized as low, medium and high based on their impact. LOW - Not system impacting, messages, displays, ... MEDIUM - User will see a difference in feature operation than they expect. HIGH - Major impact to call processing or system operation. If an acceptable workaround is available, the problem will be categorized as medium.
Explanation/ Workaround	If there is a workaround available by January 30,2002 this information will be documented here.

New Large System Global Clock NTRB53

Problem Category	Switching clock may cause slips	Ref: MP17089 PATCH: NONE
Date reported	04/12/2001	
System impacted	All large system with new clock	
Software reported	Release 25.40	
Description of incident	Do not use LD 39 to switch NTRB53AA clocks; all commands should be issued from LD 60. Switching clocks from LD 39 may cause digital trunks to slip until the clock audit comes around to correct the discrepancy. This will cause noise on all digital trunk calls. If you do switch from overlay 39, immediately go to overlay 60 and issue the TRCK PCK command.	
Impact on system operation	Minor	
Workaround	Use LD 60 to switch NTRB53AA clocks	

Problem Category	Download Loadware gets started but fails	Ref: MP16853 PATCH: NONE
Date reported	11/15/2001	
System impacted	All large system with new clock	
Software reported	Release 25.40	
Description of incident	After sysload/INI, plug a Clock card NTRB53AA into slot. Change the clock status from unequipped to equipped with SSCK X command and enable it with ENL CC X command in overlay 60. When bank 1 is empty or bank 1 firmware version number is lower than that in the software, loadware download gets started but fails. Bug message CLKC0025 is printed out indicating the failure of download.	
Impact on system operation	Minor	
Workaround	Disable the card and enable it again. Download is successful. Download always fails the first attempt to enable the CLKC.	

Option 11C IP Expansion

Problem Category	Digital Trunks	Ref: MP14089 & MP16975 PATCH: NONE
Date reported	11/26/2001	
System impacted	Option 11C SIPE	
Software reported	Release 25.30	
Description of incident	Intermittently digital trunk in IP Expansion cabinet does not come into service after reboot	
Impact on system operation	Medium, but it is very intermittent, Calls cannot be made over the trunk.	
Workaround	Manually disable the trunk loop and then enable the loop. If the loop cannot be manually enabled in LD96, reboot the Expansion Cabinet or the Main.	

Problem Category	Message waiting indicator during survival mode	Ref: MP16013 PATCH: NONE
Date reported	09/21/2001	
System impacted	Option 11C SIPE	
Software reported	Release 25.30	
Description of incident	When in Survival mode and MMail can be accessed, messages left for sets do not result in set getting the message indicator lamp to light even though Mail can be accessed.	
Impact on system operation	Medium.	
Workaround	Message indicator is given when returning to Slave Mode.	

Problem Category	Call sender during Survival mode	Ref: MP16012 PATCH: NONE
Date reported	09/21/2001	
System impacted	Option 11C SIPE	
Software reported	Release 25.30	
Description of incident	Mail can be retrieved in Survival mode but can't use "Call Sender" option to call sender within same IP Cabinet.	
Impact on system operation	Medium.	
Workaround	Call Sender option is operational when system switch back to Slave mode	

Problem Category	Change IPR command from YES to NO will corrupt configuration file Ref: MP17816 PATCH: MPLR16270
Date reported	01/23/2002
System impacted	Option 11C SIPE
Software reported	Release 25.40
Description of incident	When user changes SIPE IP configuration using the Command CHG IPR "NO BANDWIDTH" from "YES" to "NO" will corrupt the IPREM.DB configuration file.
Impact on system operation	Medium.
Workaround	Patch is available

OPTION 81C CP Pentium II

Problem Category	Adding a New Group	Ref: MP16371 PATCH: NONE
Date reported	10/10/2001	
System impacted	Option 81C CPP	
Software reported	Release 25	
Description of incident	Adding a new group on the inactive core before adding the group on the active core may cause a graceful switchover to take place	
Impact on system operation	Medium. Calls in progress will not be affected, however new calls will be affected during the warm start.	
Workaround	Add new groups to the active core before adding to the inactive core.	

Problem Category	Redundancy	Ref: MP16093 PATCH: NONE
Date reported	10/25/2001	
System impacted	Option 81C CPP	
Software reported	Release 25	
Description of incident	After an install of new software, the active side will not reboot and continually displays a NT5350 message. Problem is intermittent	
Impact on system operation	High. Lose system redundancy. Resolution may result in temporary loss of call processing.	
	Problem resolved by reseating hardware, replacing hardware or power cycling system.	

Problem Category	Redundancy	Ref: MP16266/MP17492 PATCH: NONE
Date reported	11/26/2001	
System impacted	Option 81C CPP	
Software reported	Release 25	
Description of incident	High Speed pipe may not enable if the system has greater than 24 patches installed.	
Impact on system operation	Medium. Loss of system redundancy	
Workaround	Keep number of patches below 25	

Problem Category	Redundancy	Ref: MP17946 PATCH: MPLR16289
Date reported	01/29/2002	
System impacted	Option 81C CPP	
Software reported	Release 25	
Description of incident	The system fails to perform disk synchronization after losing and recovering the High Speed Pipe connection. This may occur if the system is running a high number of patches (greater than 30.)	
Impact on system operation	High. Lose system redundancy. Resolution may result in temporary loss of call processing.	
	A patch will be made available that will ensure that the disk synchronization is performed and redundancy is not lost.	

Call Processor CP2, CP3 and CP4

Problem Category	HSL to MAX will not recover	Ref: MP13850 PATCH: MPLR15696
Date reported	05/17/2001	
System impacted	All system	
Software reported	Release 25	
Description of incident	High Speed Link (HSL) to MAX will not recover if it goes down on the 16 th of the month	
Impact on system operation	Medium.	
Workaround	Patch is available	

Problem Category	IOD040; Quad paddleboard ports disable	Ref: MP16169 PATCH: None
Date reported	10/04/2001	
System impacted	All system	
Software reported	Release 25	
Description of incident	NT8D41BA RIs 6 quad SDI paddleboards, ports will become disabled while running midnights with LD 60. Switch will display IOD040 with ports 1 and 2 disabled.	
Impact on system operation	Medium.	
Workaround	Must re-enable ports after running midnights with LD 60.	

Problem Category	BERR705 from task tSL1 while ENLL SILC	Ref: MP17409 PATCH: MPLR16248
Date reported	01/07/2002	
System impacted	Large System only	
Software reported	Release 25	
Description of incident	Configure and setup MISP with BRI application. Enable the loop and disable it. You may not get a BERR705.	
Impact on system operation	Medium.	
Workaround	Patch is available	

ACD

Problem Category	Routing calls to a Dummy ACD-DN	Ref: MP15071 PATCH: MPLR16245
Date reported	07/24/2001	
System impacted	All system	
Software reported	Release 25	
Description of incident	Calls from a Symposium CDN are routed to a dummy ACD-DN, when an ACD agent is unavailable to answer the call. The dummy ACD-DN is NCFW to the MMail ACD-DN. When the call reaches MMail, it shows the CDN instead of the dummy ACD-DN. The call reaches MMail but tries to go to a mailbox matching the Symposium CDN.	
Impact on system operation	Medium.	
Workaround	Patch is available	

Problem Category	CDN Name	Ref: MP14998 PATCH: MPLR15779
Date reported	07/19/2001	
System impacted	Option 11C	
Software reported	Release 25	
Description of incident	When an incoming call to a CDN terminates on an agents set in the default ACD queue, the name assigned to the incoming route ACOD is displayed, not the name assigned to the CDN.	
Impact on system operation	Medium.	
Workaround	Patch is available	

Problem Category	TAPI soft client	Ref: MP15859 PATCH: MPLR15887
Date reported	09/13/2001	
System impacted	All system	
Software reported	Release 25	
Description of incident	ESN5 signaling information (TCOS) are displayed on TAPI Soft Client in ringing and active state.	
Impact on system operation	Medium.	
Workaround	Patch is available	

Problem Category	SCCS Real Time display for Agent (500 set) Ref: MP16876 PATCH: MPLR16103
Date reported	11/17/2001
System impacted	All system
Software reported	Release 25
Description of incident	Symposium with 500 set agents, extra call pegged after 500 set configured as an Agent transfers call over MCDN trunk
Impact on system operation	Medium.
Workaround	Patch is available

Call Center Applications

Problem Category	CLID on TAPI or Symposium Ref: MP15642 PATCH: MPLR12550
Date reported	08/30/2001
System impacted	All system
Software reported	Release 25
Description of incident	The CLID of a caller will be displayed on any symposium agent and TAPI even if DDGD is configured
Impact on system operation	Medium.
Workaround	Patch is available

Problem Category	108 IVR ports configured in Symposium for GiveIVR. Ref: MP17291 PATCH: None
Date reported	08/30/2001
System impacted	All system
Software reported	Release 25
Description of incident	10% calls not getting GIVR treatment with 108 IVR ports
Impact on system operation	Medium.
Workaround	Reduce number of configured IVR port to 96

CallPilot

Problem Category	Agent login cannot be invoked	Ref: MP17013 PATCH: None
Date reported	11/28/2001	
System impacted	All system	
Software reported	Release 25	
Description of incident	A CallPilot system connects to a Symposium system using the MLink. The CallPilot channels are acquired by Symposium as monitored agents (with ALOG = yes), when you disable an agent (from CallPilot) and then enable the agent. The disable/enable operation would send a SFI (logout/login) request over the MLink to Symposium, which in turns sends the request to the M1. The M1 fails the request saying that the feature cannot be invoked.	
Impact on system operation	Medium.	
Workaround	Disable and re-enable the agents from the M1, triggering the ALOG to work.	

Option 11C

Problem Category	MSDL Loadware	Ref: MP16186 PATCH: NONE
Date reported	10/05/2001	
System impacted	Option 11 C	
Software reported	Release 25	
Description of incident	SDL PSDL does not download during software upgrade	
Impact on system operation	Medium.	
Workaround	Disable the D-channel and loop then enable the MSDL and D-channel or force download to the MSDL when the loop is disabled.	

Administration

Problem Category	Inventory for i2004 in LD 117	Ref: MP16651 PATCH: NONE
Date reported	10/05/2001	
System impacted	Option 11C	
Software reported	Release 25	
Description of incident	Inventory PRT in OVL 117 does not include i2004 sets	
Impact on system operation	Medium.	
Workaround	Use IDU command in overlay 32 to list i2004 sets one by one	

Features

Problem Category	BUG4006	Ref: MP17376 PATCH: MPLR16314
Date reported	01/03/2002	
System impacted	All system	
Software reported	Release 25.40	
Description of incident	A call transferred by the night-DN to a set, which doesn't answer, should get routed back to night-DN as per configuration. Instead, BUG4006 is printed and the Set remains busy.	
Impact on system operation	Medium.	
Workaround	Press SCR key on the ringing set and then release the key. Patch is required only for sites with the RGNA treatment for internal or external calls is set to DAR (disconnect)	

Problem Category	Misoperation of CFNA for internal calls	Ref: MP16269 PATCH: MPLR15937
Date reported	10/6/2001	
System impacted		
Software reported	Release 25	
Description of incident	Internal Call is routed back to the caller (to a hunt DN of the originating set), if analog set does not answer (with CLS FNA and CFTA, but without FTR LDN)	
Impact on system operation	Medium.	
Workaround	Patch is available	

Problem Category	Initialization	Ref: MP16630 & MP17092 PATCH: MPLR16077
Date reported	10/6/2001	
System impacted		
Software reported	Release 23 & 24	
Description of incident	INI 1D Related to Class Sets and VMWI	
Impact on system operation	Medium.	
Workaround	Patch is available	

Problem Category	Call hunt to key 01 failed when TRCL is set to 1 [System default = 0]	Ref: MP17392 PATCH: TBD
Date reported	01/28/2002	
System impacted	All system	
Software reported	Release 25.40	
Description of incident	When Total Redirection Count Limit (TRCL) in LD 15 is set to 1, call hunt to key 01 or Voice mail is not working	
Impact on system operation	Medium.	
Workaround	Patch will be available for sites setting TRCL value other than 0 “the default”	

Problem Category	BFS does not monitor large number of sets	Ref: MP17398 PATCH: MPLR16313
Date reported	01/24/2002	
System impacted	All system	
Software reported	Release 25.40	
Description of incident	BFS lights do not come on when a set is been monitored by large number of sets (more than 20)	
Impact on system operation	Medium.	
Workaround	Patch is available	

Agent Greeting

Problem Category	Transfer a Call to a queue Ref: MP16610 PATCH: MPLR16174 =MPLR13093+ MPLR15844
Date reported	10/31/2001
System impacted	All system
Software reported	Release 25
Description of incident	When a call from the console is extended to a queue with Agent Greeting set, the console cannot release correctly from the call if the agent answers before the attendant releases the call .The call is staying on a Loop key on the console.
Impact on system operation	Medium.
Workaround	Wait till the call is answered before releasing it. This PEP incorporates the functionality of two existing R25.15 PEPs, MPLR13093 and MPLR15844. Both these PEPs effect the same procedures so the patches had to be merged. These two PEPs will have to be removed before MPLR16174 may be installed. After this PEP is installed the greeting will not be played until the attendant releases the call.

ELAN

Problem Category	Application Ref: MP15897 PATCH: NONE
Date reported	11/14/2001
System impacted	All systems
Software reported	Release 25
Description of incident	When CallPilot server and Symposium server were connected to the M1 over the ELAN and a power failure occurred, both servers went down without being able to de-acquire the resources (e.g., ACD agents, CDNs). When the power came back on, the servers might not come up in the order that they were previously started. Sometimes the M1 would hand out the first available ELAN number to the first application connected to the ELAN. When the EALN number was different from what it was previously assigned, CallPilot and/or Symposium would fail to acquire the agents and CDNs (because they were still acquired under the previous ELAN number).
Impact on system operation	Medium.
Workaround	Manually restart the servers in the order that they were assigned ELAN numbers (before the power failure) such that the same ELAN number would be re-assigned by M1.

MICB2

Problem Category	MICB2 with external server	Ref: MP16557 PATCH: NONE
Date reported	10/29/2001	
System impacted	All system	
Software reported	Release 25	
Description of incident	<p>When an embedded server for MICB2 is used there is a limit to 100 users / card or an error message is provided. This does not happen for an external server and does cause problems for nightly MICB2 backup routines. When MICB2 with external serve has more than 100 users / MICB card, the backup routine gets a Watchdog timeout and backup routine fails which causes MICB card to re-load.</p> <p>NTP Documentation Correction to limit the users to 100 for both embedded and external servers</p>	
Impact on system operation	Medium.	
Workaround	NTP Documentation Correction to limit the users to 100 for both embedded and external servers	

ITG Line 2.2 & IP Phone

Refer to “Read Me First ITGL 2.2” Bulletin for full list of recommended patches and workarounds

ISDN & Trunks

Problem Category	QSIG Trunks	Ref: MP15784 PATCH: MPLR16112
Date reported		
System impacted	All M/C types	
Software reported	Release 25	
Description of incident	Switch INIs when trying to use VM speed dial from IPC set over QSIG with overlap signaling enabled	
Impact on system operation	Medium, Calls to VM cannot be made using speed dial from Turret set over QSIG when overlap signalling is enabled as the switch INIs .	
Workaround	Patch is available	

Problem Category	MCDN	Ref: MP15975 PATCH: MPLR16220
Date reported	20/09/2001	
System impacted	All machine types	
Software reported	Release 25.30	
Description of incident	Supervised transfer to call pilot does not work when TAT is active in the network.	
Impact on system operation	High, Appears always. As a result call drops. Call transfer to call pilot cannot be performed. The transfer key gets locked.	
Workaround	Disable TAT or load MPLR16220	

Problem Category	New TDD relay number 711 over NI-2	Ref: MP17334 PATCH: MPLR16303
Date reported	12/20/2001	
System impacted	All system	
Software reported	Release 25.30	
Description of incident	New TDD 711 number will not complete over NI2	
Impact on system operation	Medium,	
Workaround	Patch is available or Build new RLI route list index with NI2 entries and built dummy DMI Digit manipulation table (insert none and delete none) and change the call to LOC.	

Problem Category	NI-2	Ref: MP17826 PATCH: MPLR16274
Date reported	01/24/2002	
System impacted	All system	
Software reported	Release 25.30	
Description of incident	Name coming in a Facility message on NI-2 interface is not tandemed across MCDN and QSIG.	
Impact on system operation	Medium,	
Workaround	Patch will be available	

M3900 sets

Problem Category	M3905 user can't read advice of charge information Ref: MP16861 PATCH: MPLR16277
Date reported	11/16/2001
System impacted	All system
Software reported	Release 25.40
Description of incident	MRK key doesn't work on M3905 IF MTRO=PPM only when using non-prim DN.
Impact on system operation	Medium,
Workaround	Patch is available

Appendix E: PEPs available for 25.40 GA

Patch	PR	Feature	Title	Public
MPLR13881	MP12396	ACD	ACD NCFW STOPS WORKING SYSTEM WIDE	YES
MPLR15779	MP14998	ACD	CDN name not displayed when answered at default ACD DN	YES
MPLR12550	MP15642	ACD	CLID (for DDGD set) is shown on ICCM agent and TAPI	YES
MPLR15691	MP14327	ACD	Streams of AUD069 and cross talk	YES
MPLR15726	MP13853	ACD	BUG4231 on symposium acquire set	YES
MPLR15860	MP15630	ACD	Meridian Max shows High values of Calls waiting	YES
MPLR15879	MP15740	ACD	NO CDN name display after CO call forward	YES
MPLR15887	MP15859	ACD	TCOS digits display on TAPI	YES
MPLR15892	MP15882	ACD	BUG680 and VNS Bugs when VNS is not being used	YES
MPLR15928	MP13830	ACD	INTERACTOINS BETWEEN IDN AND NRDY OPERATION	YES
MPLR15929	MP16220	ACD	USM RINGING SENT TWICE, RELATED TO FNA	YES
MPLR16103	MP16876	ACD	SYMPOSIUM problem with 500 set AGENTS (extra call pegged)	YES
MPLR16124	MP16974	ACD	BUG6246 and mail agents go into busy state	YES
MPLR16149	MP17065	ACD	BERR705 FROM RCVY_MAINT_AUDIT	YES
MPLR16164	MP12815	ACD	S-LINK PROGRESS MESSAGE	YES
MPLR15825	MP15359	ADMIN	SCH0011 given after service change of BCS set with PVR	YES
MPLR16061	MP16508	ADMIN	SSL not printed in LD21 for DID incoming only DTI2 route	YES
MPLR16174	MP16610	AGENT-GR TG	Console extended call to agent greeting is unable to RLS	YES
MPLR15636	MP13874	ATTN	DMI digits inserted twice when attendant transfer	YES
MPLR13010	TM17734	CALLPILOT	Intermittent ring no answer on 5.11G	YES
MPLR15156	MP10913	CALLPILOT	Revert to 1800 number fails from Call Pilot.	YES
MPLR15752	MP14877	CALLPILOT	BUG740	YES
MPLR15829	MP10284	CALLPILOT	CDN passed to CALLPILOT when call is sent to phantom DN	YES
MPLR16214	MP17255	CALLPILOT	DISA call can not go to CALLPILOT	YES
MPLR16213	MP10284 BV82596	CALLPILOT	MP10284 - CDN passed to Callpilot when call is sent to phantom DN (Merged PEP)	YES
MPLR15831	MP15436	CALLPROC	One more INI 1D from procedure ENDHUNT	YES
MPLR16084	MP14138	CDR	No CDR N record when a call forwards to Callpilot	YES
MPLR15737	MP14867	CPP	CPP overloads MSDL with IAS CCR-AML Messages	YES
MPLR10194	BV68508	DTI2	Midnight routines incorrectly cause DTI2 to go OOS	YES
MPLR10902	BV80408	DTR	TDS514, TDS830 during midnight routine	YES
MPLR16314	MP17376	FEATURES	BUG4006 RGNA Set not cleared	YES

Patch	PR	Feature	Title	Public
MPLR16077	MP16630	FEATURES	INI000 001D from NIL VMWI_CRPTR, procedure CLASS_VMWI	YES
MPLR16313	MP17398	FEATURES	BFS key lights do not work	YES
MPLR15788	MP15257	FEATURES	Hot Dial Call To ACD Queue Forwarded to CDN not working	YES
MPLR15937	MP16269	FEATURES	Mis-operation of cfna for internal calls	YES
MPLR16106	MP16883	FEATURES	Taurus AND I2004 CFW Displays Not Updated By BFS Key.	YES
MPLR15446	MP07233 MP11141 MP12206 MP10822	FNF	FIJI : When switching clocks ,ring state changes.	YES
MPLR16171	MP16999	IP_PHONE	TCP link starts before RUDP does	YES
MPLR16227	MP17486	IP_PHONE	RLMTPSEXCH Message needed to be changed on 68XX CPUs	YES
MPLR16112	MP15784	ISDN	QSIG with overlap signalling Speed dial	YES
MPLR16220	MP15975	ISDN	NOT POSSIBLE TO TRANSFER AGAIN AFTER 1ST TRANSFER ATTEMP	YES
MPLR16274	MP17826	ISDN	Name in a Facility message on NI-2 is not tandemed.	YES
<i>MPLR07335*</i>	BV42863	ISDN	ISL Tandem to Numeris causes BUG1365	YES
MPLR11106	BV81327	ISDN	Octel DMID integration fails intermittently	YES
<i>MPLR11286*</i>	BV81802	ISDN	BRIT is not reseted when L1 goes down on numeris	YES
<i>MPLR11406*</i>	BV82211	ISDN	Cannot CFW if incoming and outgoing trunks are R2MFC.	YES
<i>MPLR12097*</i>	MP02502	ISDN	EURO ISDN channel remains busy	YES
<i>MPLR12176*</i>	BV83619	ISDN	DPNSS CHANNELS LEFT IN HALF DISC BY VNS IN UK	YES
<i>MPLR12511*</i>	MP05829	ISDN	Noise on DPR12 channel timeslot 7	YES
<i>MPLR12848*</i>	MP08964	ISDN	BERR705 form QNDS_HANDLER	YES
<i>MPLR13015*</i>	MP09252	ISDN	Call blocked from EDSS1 to MCDN if data call is from GSM	YES
<i>MPLR13119*</i>	MP09782	ISDN	BNE call diversion/partial rerouting does not work.	YES
<i>MPLR13138*</i>	MP10514	ISDN	NO ACNT CODE IN CASE OF TRANSFER VIA EXTERNAL IVR SYSTEM	YES
MPLR13426	MP11385	ISDN	INI 1D in UPDATE_LINK procedure	YES
<i>MPLR13565*</i>	MP11520	ISDN	DATA calls fail due to OVERLAP signalling BCAP interact	YES
<i>MPLR14519*</i>	BV66416	ISDN	BRI S0 ports going into MBSY state	YES
MPLR14738	MP09742	ISDN	NI2 call by call routing DSC with FLEN = length of NCDP	YES
MPLR15300	MP12468	ISDN	RCFW over tandem is not working when NAS is programmed	YES

Note: PEPs considered European Specific PEPs are highlighted in Italics with *

Patch	PR	Feature	Title	Public
MPLR15662	MP14087	ISDN	Wrong greeting by Octel in case of CFW and incoming GSM call	YES
<i>MPLR15690*</i>	MP14190	ISDN	SL1 uses CREF of active call for new SETUP REQ	YES
<i>MPLR15706*</i>	MP12801	ISDN	Extra tone is added when EES is used with ADL key	YES
MPLR15716	MP11605	ISDN	INI 000C from PRA_IDLE_CHANNEL / IDLECR / REMOVE	YES
<i>MPLR15769*</i>	MP14934	ISDN	INI and BERR705 when ALERT was sent on QSIG ESGF	YES
MPLR15808	MP15250	ISDN	BUG9014 on ISDN calls if originator is trunk	YES
MPLR15827	MP15348	ISDN	NIBUG030	YES
<i>MPLR15863*</i>	MP15708	ISDN	CAUSE 20 "Subscriber absent" is not accepted by M1	YES
<i>MPLR15880*</i>	MP15972	ISDN	BERR0705 when DLI2 information were received via EURO	YES
<i>MPLR15882*</i>	MP15808	ISDN	ERR5523 at each tandem call from Siemens HiCom	YES
<i>MPLR15906*</i>	MP16002	ISDN	DIV # is missing when routing to DPNSS via PLDN	YES
<i>MPLR15912*</i>	MP15151	ISDN	Number is incorrect in TAND case when RCAP=ND3, SIGO=ESN5	YES
MPLR15913	MP16060	ISDN	Network Remote Call Forward not working	YES
<i>MPLR16058*</i>	MP16507	ISDN	UNWANTED INTERCEPT OF ACTIVE CALL TO ATTENDANT	YES
MPLR16062	MP16513	ISDN	Locked sets when ATT transfer parked call over network	YES
MPLR16064	MP16535	ISDN	BERR705 with QSIG GF involving a CFNA an LDN and 500 set	YES
<i>MPLR16074*</i>	MP16791	ISDN	NCOS Barring With CFF Does Not Work With DPNSS Diversion	YES
<i>MPLR16111*</i>	MP16915	ISDN	BERR0705 / INI related to EURO ISDN -> MCDN gateway	YES
<i>MPLR16131*</i>	MP17011	ISDN	QSIG: AFTER PATH REPLACEMENT, SET CAN'T PRESS TRN	YES
MPLR16156	MP17058 MP15000	ISDN	MP15000 - YLAHALLICDR No Dialed digits in X record with PPM	YES
<i>MPLR16179*</i>	MP17224	ISDN	DIGITS MISSING ON SET DISPLAY AFTER QSIG TRANSFER	YES
MPLR16261	MP17770	ISDN	BERR/INI Related to GF_Utility	YES
MPLR15925	MP16253	ITGT2.0	Perceptible loss in connecting ITG2.0 with analog set.	YES
MPLR16051	MP16273	ITGT2.0	CLID field too large stops calls across ITG.	YES
MPLR15930	MP16217	MAT	BERR705 in task SNMP if Event Prefs changed in MAT	YES
MPLR13028	MP09314	MCA	MCA CARD USED IN CALL CONTROL MODE DROPS SOME DIGITS	YES

Note: PEPs considered European Specific PEPs are highlighted in Italics with *

Patch	PR	Feature	Title	Public
-------	----	---------	-------	--------

<i>MPLR12417*</i>	MP02226	MDECT	WRONG CALLING PARTY NAME ON THE DISPLAY OF MDECT SET	YES
<i>MPLR14164*</i>	MP11932	MDECT	Blind call transfer on MDECT does not work in DCS mode	YES
<i>MPLR15719*</i>	MP14611	MDECT	BUG085 disconnect message from a dect set	YES
<i>MPLR15720*</i>	MP14613	MDECT	Calls lost when MDECT set uses MPO DISD with Callpilot	YES
<i>MPLR15778*</i>	MP14983	MDECT	BUG6244 on DECT calls	YES
<i>MPLR15908*</i>	MP15966	MDECT	MSMN PKG 370 causes dropped calls on non DCS DECT config	YES
<i>MPLR15952*</i>	MP12104	MDECT	Manual CFW cancelled with MSMN	YES
<i>MPLR16078*</i>	MP12445	MDECT	DCS sets CFW is locked on 16	YES
<i>MPLR16079*</i>	MP16616	MDECT	Time of day displayed on MDECT handsets	YES
<i>MPLR16080*</i>	MP16617	MDECT	Far End Disconnect on MDECT handsets Optional	YES
<i>MPLR16168*</i>	MP17140	MDECT	DMC cards associated with DCS DECT sets are locking up.	YES
<i>MPLR16183*</i>	MP17225	MDECT	DCS sets can not put in group hunt list	YES
<i>MPLR16285*</i>	MP16609 MP16615	MDECT	MERGE of MPLR16070 - BERR705 from procedure DO_XALC_SETS and MPLR16071 - Twinned DCS continues to ring after ATTN RLS call	YES
<i>MPLR15492*</i>	MP12981	MDECT	Wrong CDEN when copy single density to superloop	YES
MPLR15900	MP15976	MIPCD	MIPCD does not recognize “-” in the CLID	YES
MPLR10082	BV68709	MIRAN	MIRAN: set based OA&M PWD not correctly passed to MIRAN	YES
MPLR15936	MP09269	MIRAN	AUD662 and AUD031 during midnight routine	YES
MPLR11148	BV81343	NACD	BUG681 on NCFW ACD call, multi INI-C then System reload	YES
MPLR10373	BV77778	RPA	Feature FFC RPA code doesn't	YES
MPLR16248	MP17409	SIPE	BERR705 from task tSL1 while ENLL SILC	YES
MPLR16270	MP17816	SIPE	CHG IPR COMMAND FROM YES TO NO WILL CORRUPT CONFIG FILE	YES
MPLR16277	MP16861	TAURUS	MRK KEY DOES'NT WORK ON M3905 IF MTRO=PPM	YES
MPLR15951	MP16345	TAURUS	Continuous ringing on Taurus sets.	YES
MPLR16166	MP17110	TAURUS	ON HOOK DEFAULT PATH does not work with HFD	YES
MPLR16216	MP17264	TAURUS	Can only conf/Tran once on ACD M3905 FW 7.9	YES
MPLR16245	MP17503	TAURUS	ACD force answer warning tone is missing	YES
MPLR16272	MP17347	TAURUS	Doesn't display "Day/Nite/Transition mode selected"	YES
MPLR16273	MP17507	TAURUS	M3900 Non System Call Park Display	YES
MPLR11061	MP15566	THORPLAT	Multiple INI-C caused by procedure REMOVE	YES
MPLR12088	BV82987	THORPLAT	Cross talk, call cut off and aud031 aud032	YES

Note: PEPs considered European Specific PEPs are highlighted in Italics with *

Patch	PR	Feature	Title	Public
MPLR12136	BV83138	THORPLAT	Inactive CP fails takeover when active CP powered down	YES

MPLR15696	MP13850	THORPLAT	MAX, HSL goes down at 12:00AM on the 16th each month	YES
MPLR15857	MP15615	THORPLAT	BERR705 from local pd. SETUP_LOCAL_ORIG, PROC CSL I MSG	YES
MPLR16055	MP12138	THORPLAT	LRA & MC not checked in MAT when retrieved via TTY	YES
MPLR16303	MP17334	TRUNKS	TDD 711 number will not complete over NI2	YES
MPLR06859	BV44211	TRUNKS	NT8D14 IN UNSUP LOP START MODE RELEASES CALL TOO SLOWLY	YES
MPLR11592	BV82689	TRUNKS	IVR transferred call will not complete	YES
<i>MPLR15467*</i>	MP12854	TRUNKS	CLRF (R) recognized as dialing pulse on CIS DTI2.	YES
MPLR15876	MP15720	TRUNKS	WARMSTART tSL1 RESTART from DDD MODULE	YES
MPLR15895	MP15926	TRUNKS	CONN (S) signal is not sent CDTI2 call to DISA	YES
MPLR10714	BV79511	VNS	NACD target queue closed with ERR5001 print out	YES
MPLR15751	MP14530	VNS	VNS causing system to INI or SYSLOAD	YES

Note: PEPs considered European Specific PEPs are highlighted in Italics with *

Last Page

This page is included to ensure that people with a hard copy of Generic X11 Release 25.40B General Release Bulletin have the complete document. The table of contents must show that this is the actual last page of the document.

Meridian 1

Generic X11 Release 25

General Release Bulletin – Release 25.40B

© 2001 Nortel Networks

All rights reserved.

Information subject to change without notice.

Publication Number: P0994371

Documentation Release: Standard

Date: August, 2002

Printed in Canada