

**SAID**

**NIS #Q225-1  
DMS-100 Family  
Speech Activated Intelligent Dialing  
SAID  
(NTXR25AA)**

**Northern Telecom Interface Specification  
for DMS Network Interface Access to Intelligent  
Peripherals, Volume 2**

**Version 1.1      February 1995**

# Feature Description - SAID

## Switch Provides

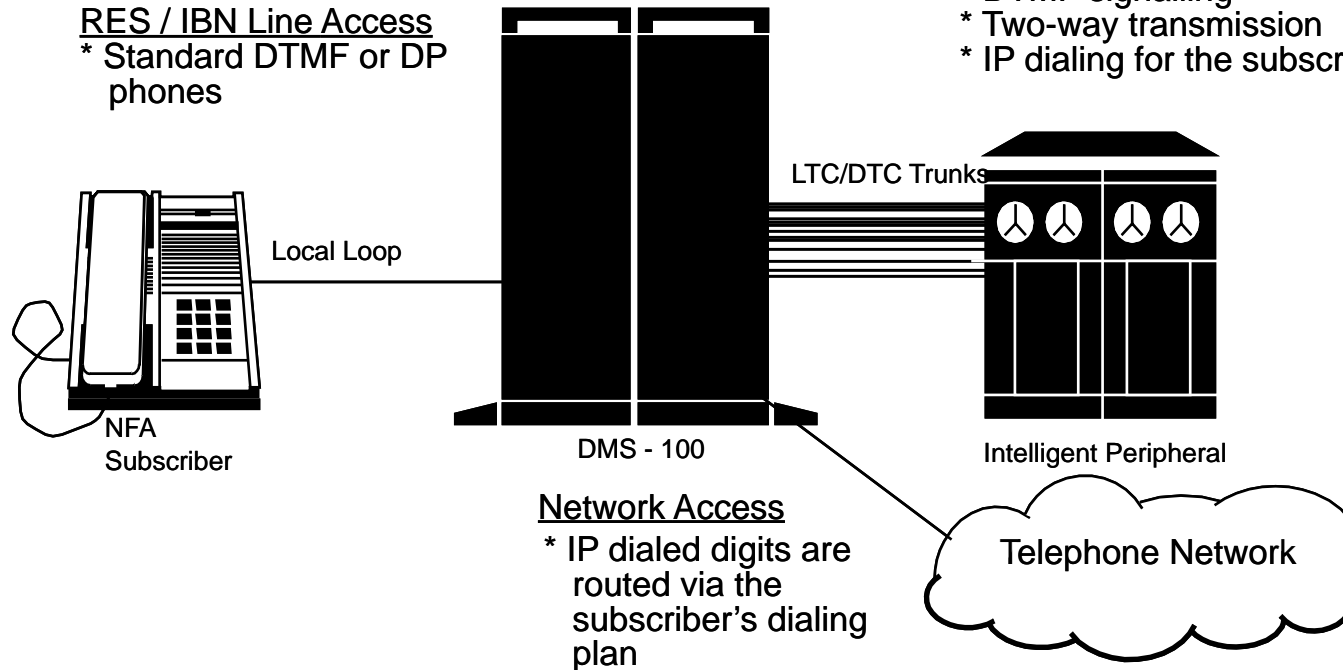
- \* Implicit, Explicit, Remote connections
- \* Connection after flash
- \* DP to DTMF conversion
- \* Two AMA call codes
- \* One AMA module code

## IP Trunk Access

- \* Immediate start dial
- \* DTMF signalling
- \* Two-way transmission
- \* IP dialing for the subscriber

## RES / IBN Line Access

- \* Standard DTMF or DP phones



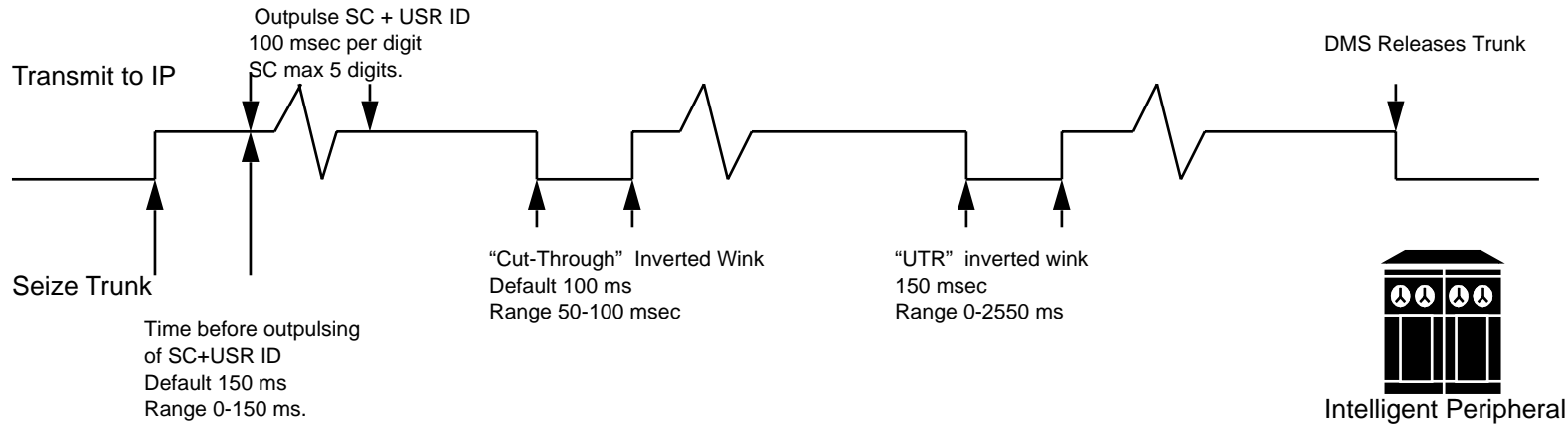
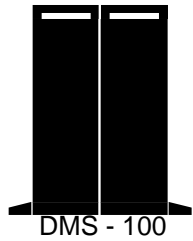
## Network Access

- \* IP dialed digits are routed via the subscriber's dialing plan

BCS35 Feature Description

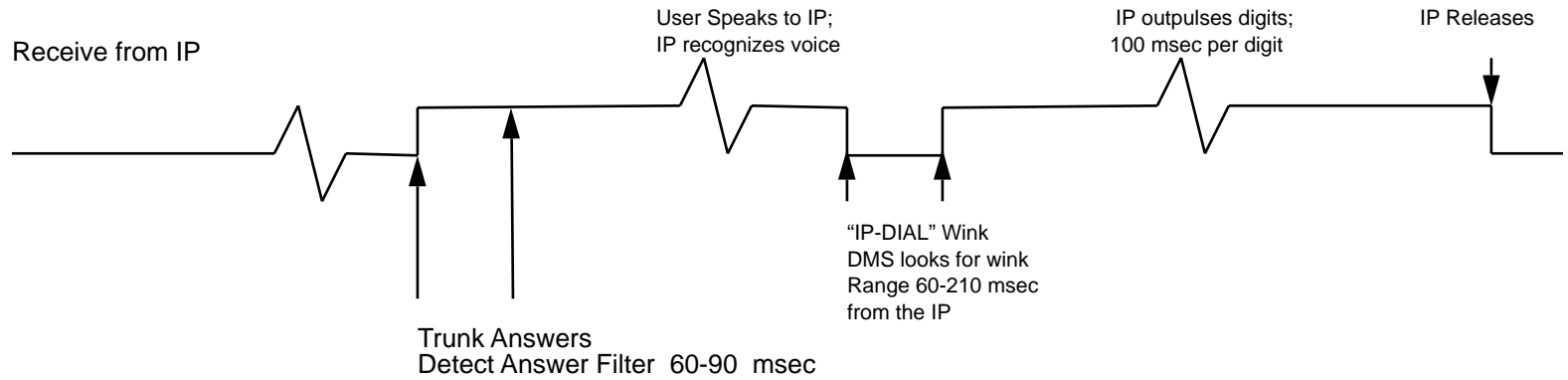
# SAID

## DMS to IP NFA Trunk Timing Diagram

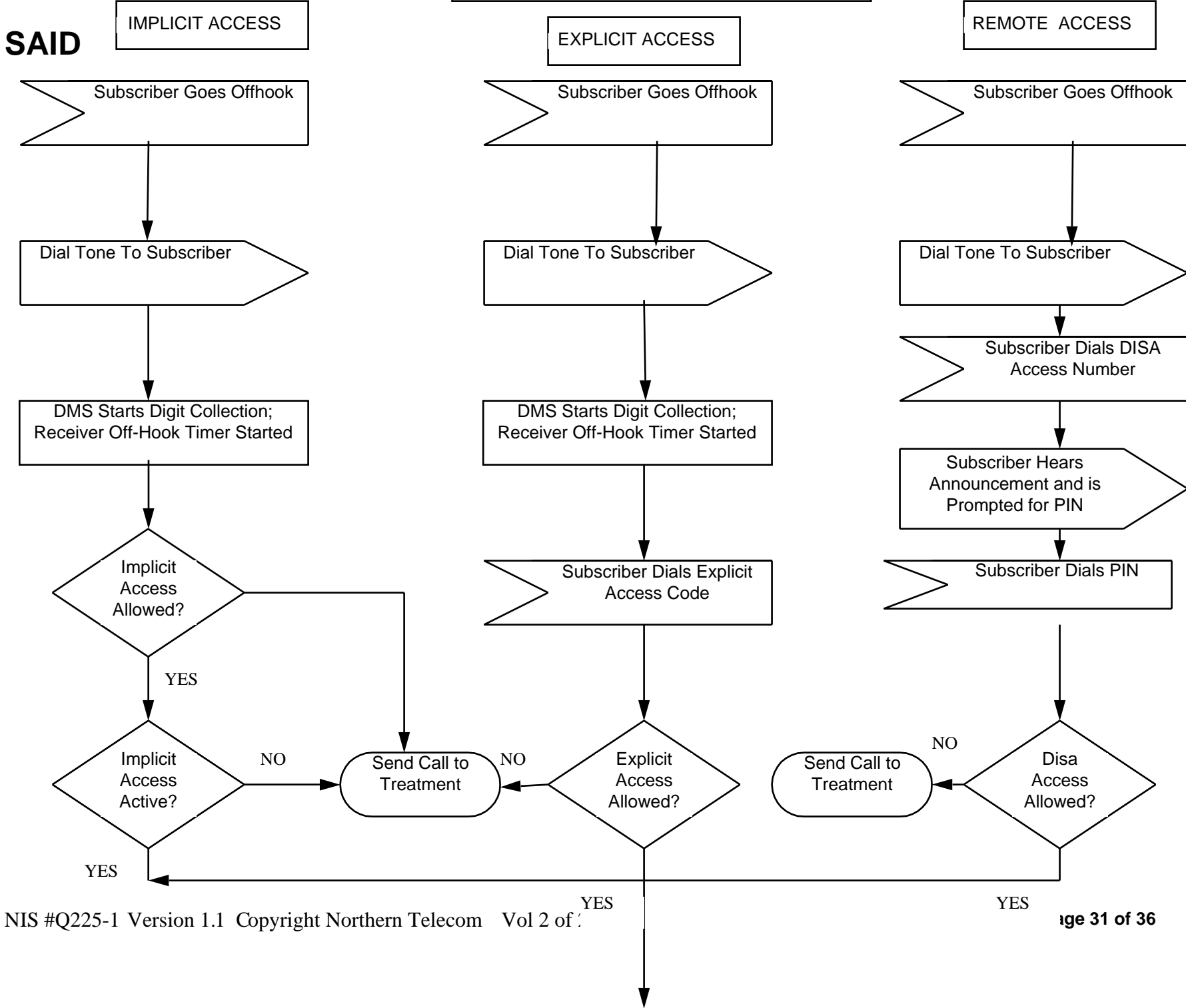


Time before outputting of SC+USR ID  
Default 150 ms  
Range 0-150 ms.

Note: in NA004 the range is 0-640 msec.

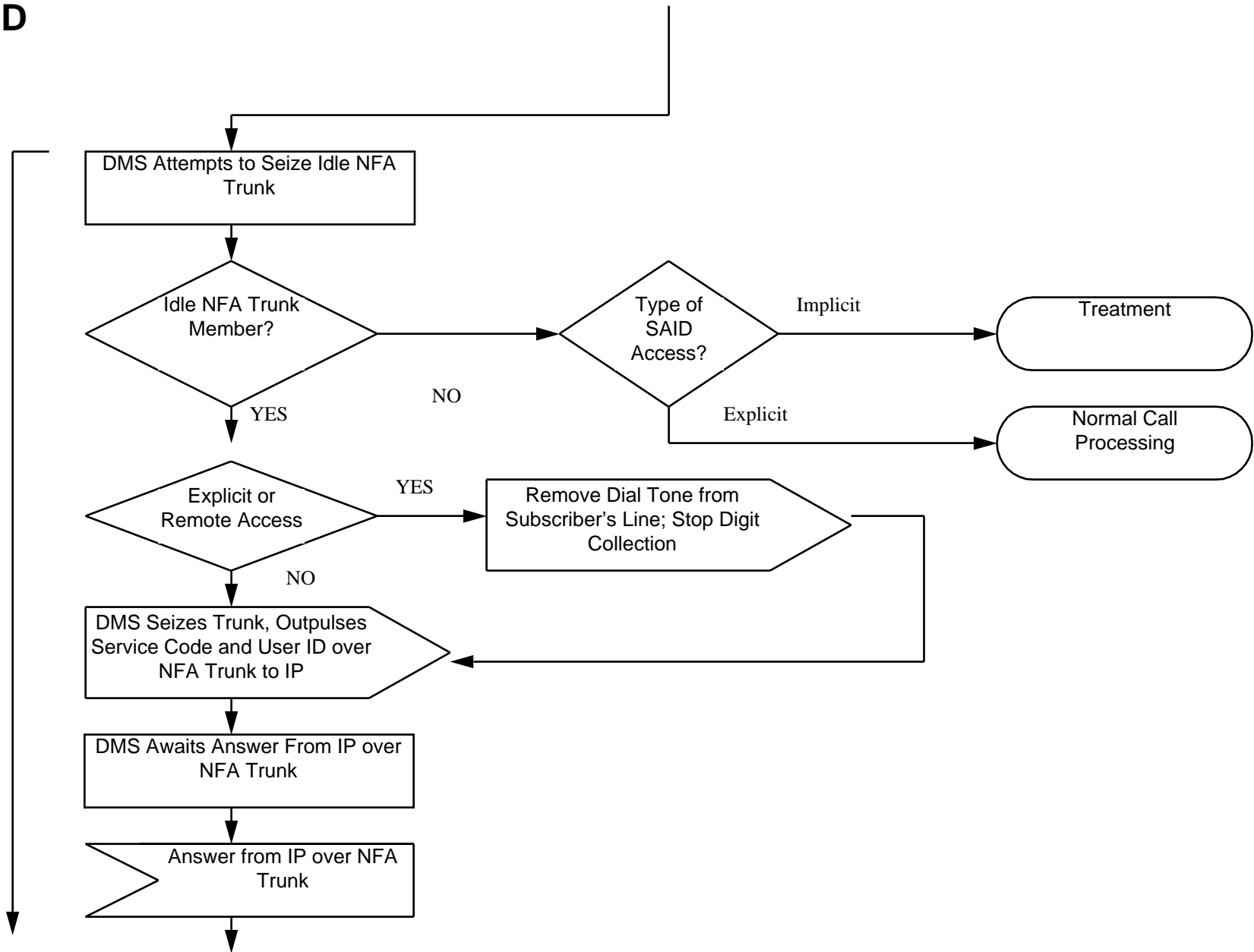


**SDL for NFA Implicit and Explicit Connections**

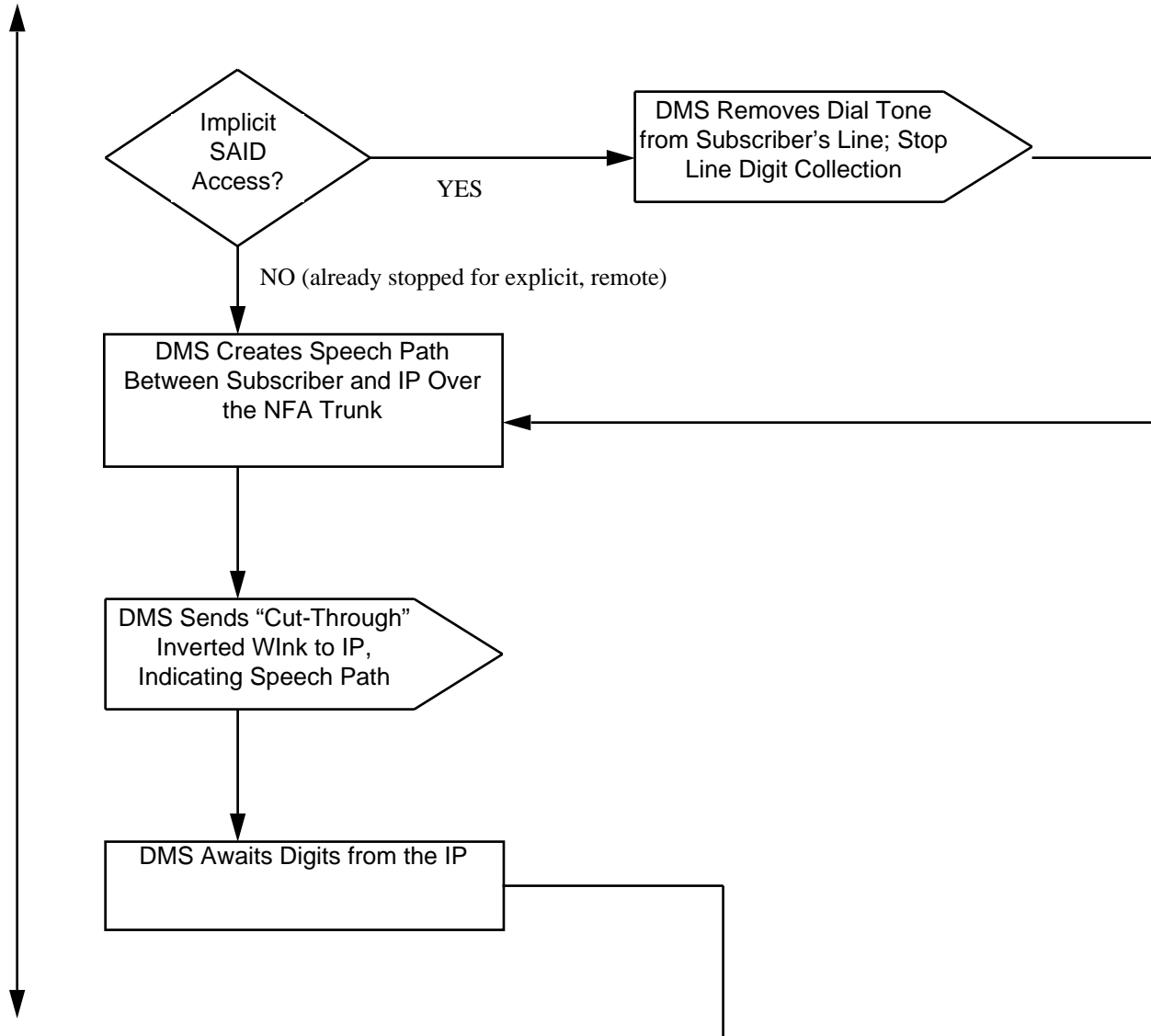


# SAID

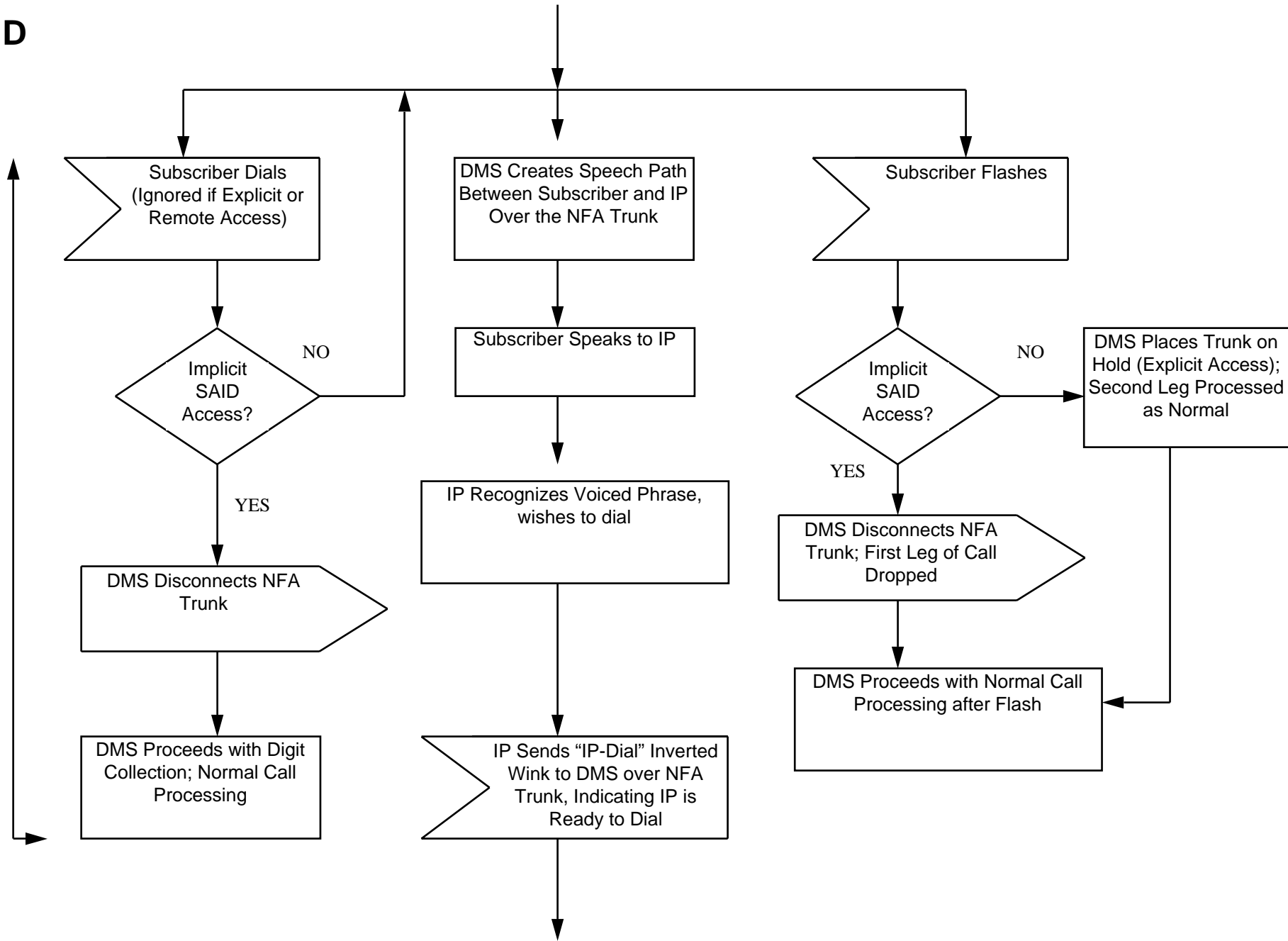
If the user dials digits during an **implicit** access at any time up until the point that the IP signals that it is ready to dial for the user, then the NFA trunk is released and the user can dial normally.



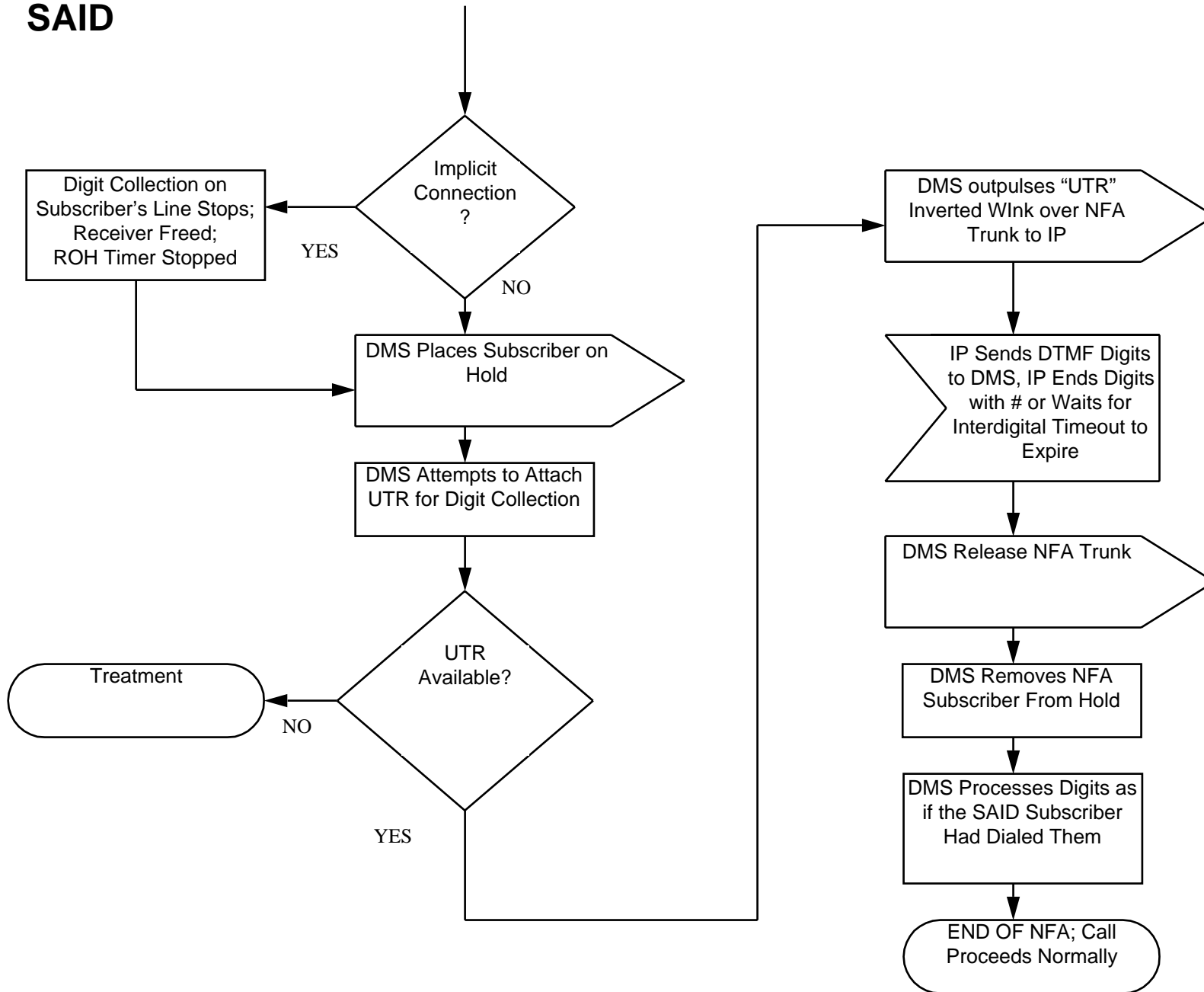
# SAID



# SAID



# SAID





**SAID**